



Fan Blade Arm Replacement

Replace the broken arm from a ceiling fan.

Written By: Ricardo Ledesma Hernandez



INTRODUCTION

Use this guide to replace the broken blade arm of a ceiling fan. A broken ceiling fan can reduce the comfort of your home, and it might make you utilize your home's air conditioner (AC) more. A working ceiling fan will save money and potentially reduce greenhouse gases that hurt the earth.

Before using this guide, make sure you know where the circuit breaker is located and turn it off for safety reasons. A few necessary tools are needed, and no prior knowledge is required.



TOOLS:

- [6-in-1 Screwdriver](#) (1)
-

Step 1 — Fan Blade Arm



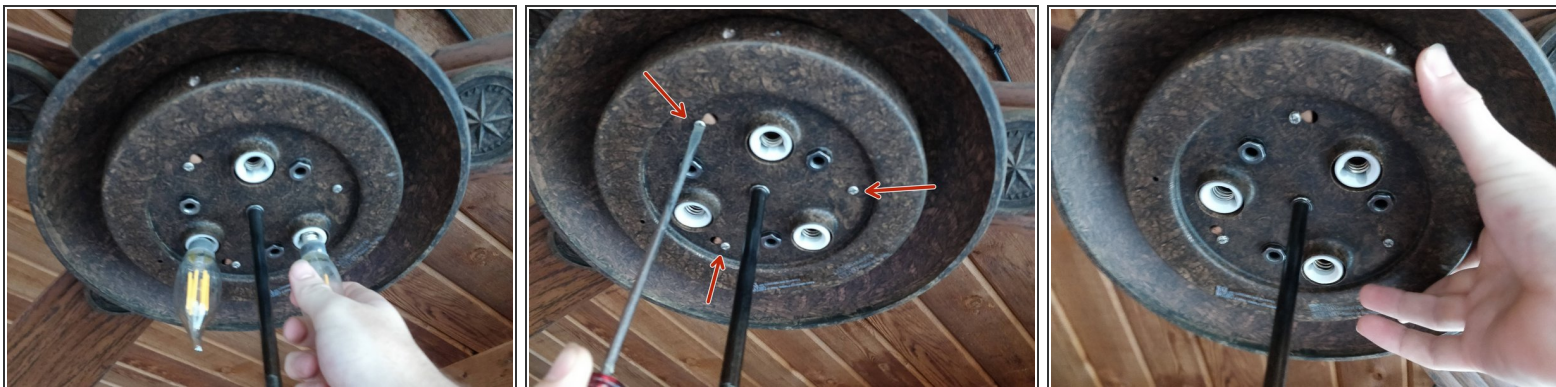
- Make sure no power is flowing to the fan. Then begin by removing the metal light frame by twisting.

Step 2



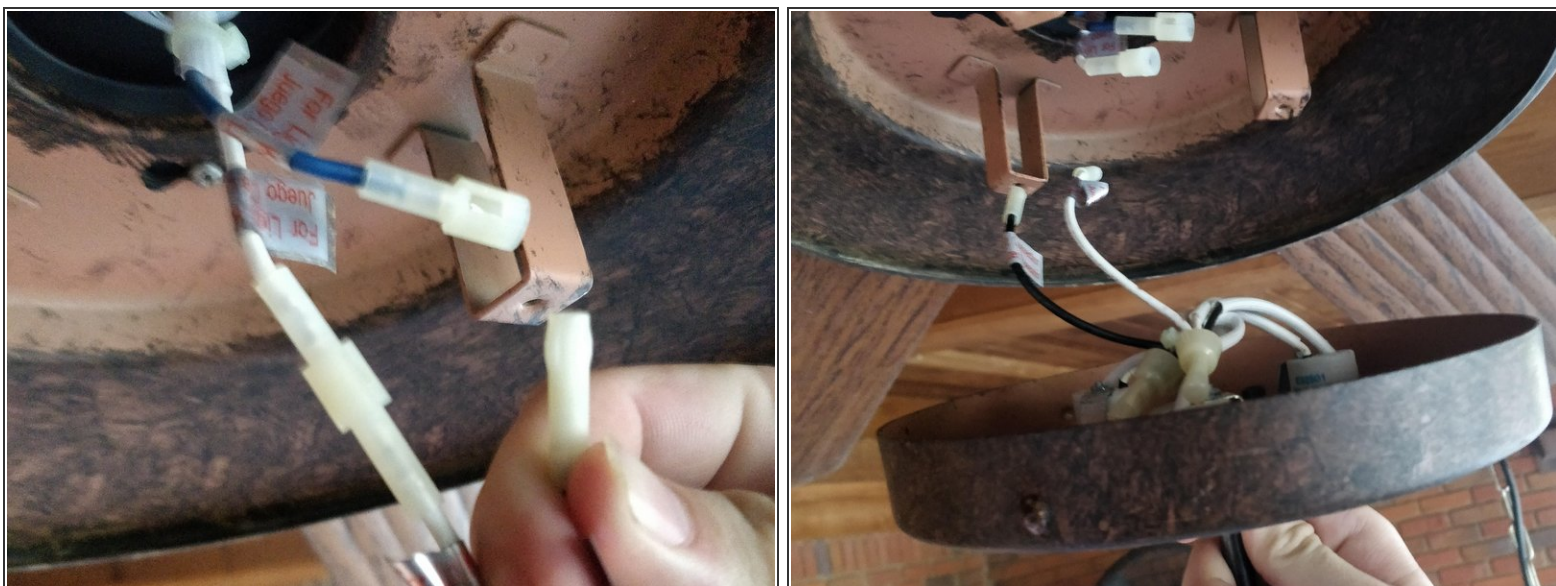
- Unscrew the finial (cover at the bottom of the glass globe). Then unscrew the hex nut and remove the rubber washer. This will allow the globe to be easily removed.

Step 3



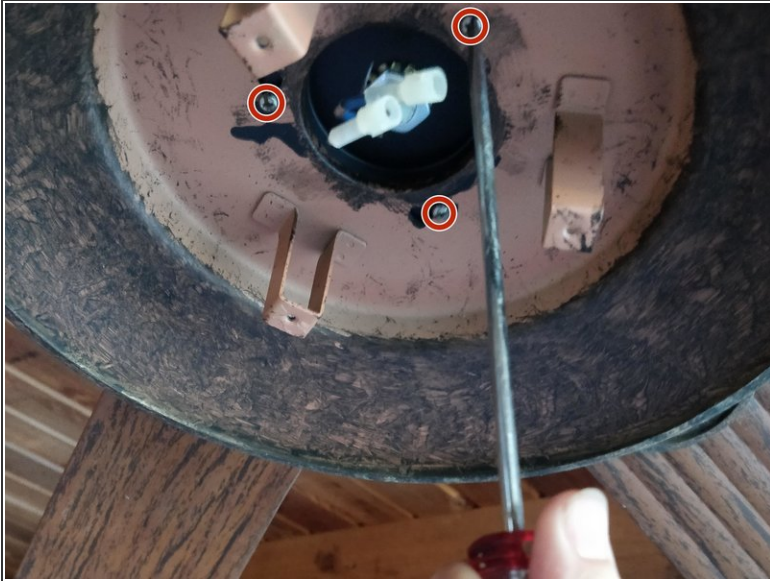
- Remove lightbulbs to avoid damage when removing light pan. Then, remove all three fitter plate screws. This will cause the light pan to hang from the electrical wires.

Step 4



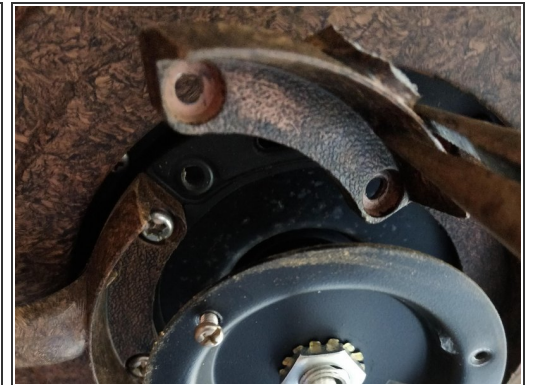
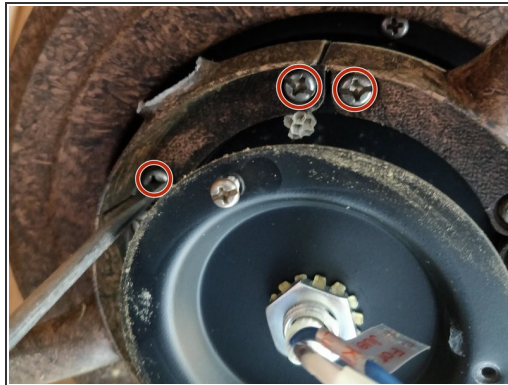
- Disconnect single pin connectors to finish removing light fixture from fan.

Step 5



- Remove the three screws from the fitter plate. This will allow the plate to easily be separated from the fan.

Step 6



- Remove the two screws securing the broken blade arm. Then separate the broken component from the fan.

Step 7



- Replace the broken blade arm on the fan blade. There are two components that are placed on either side of the blade and secured together with screws.

To reassemble your device, follow these instructions in reverse order.