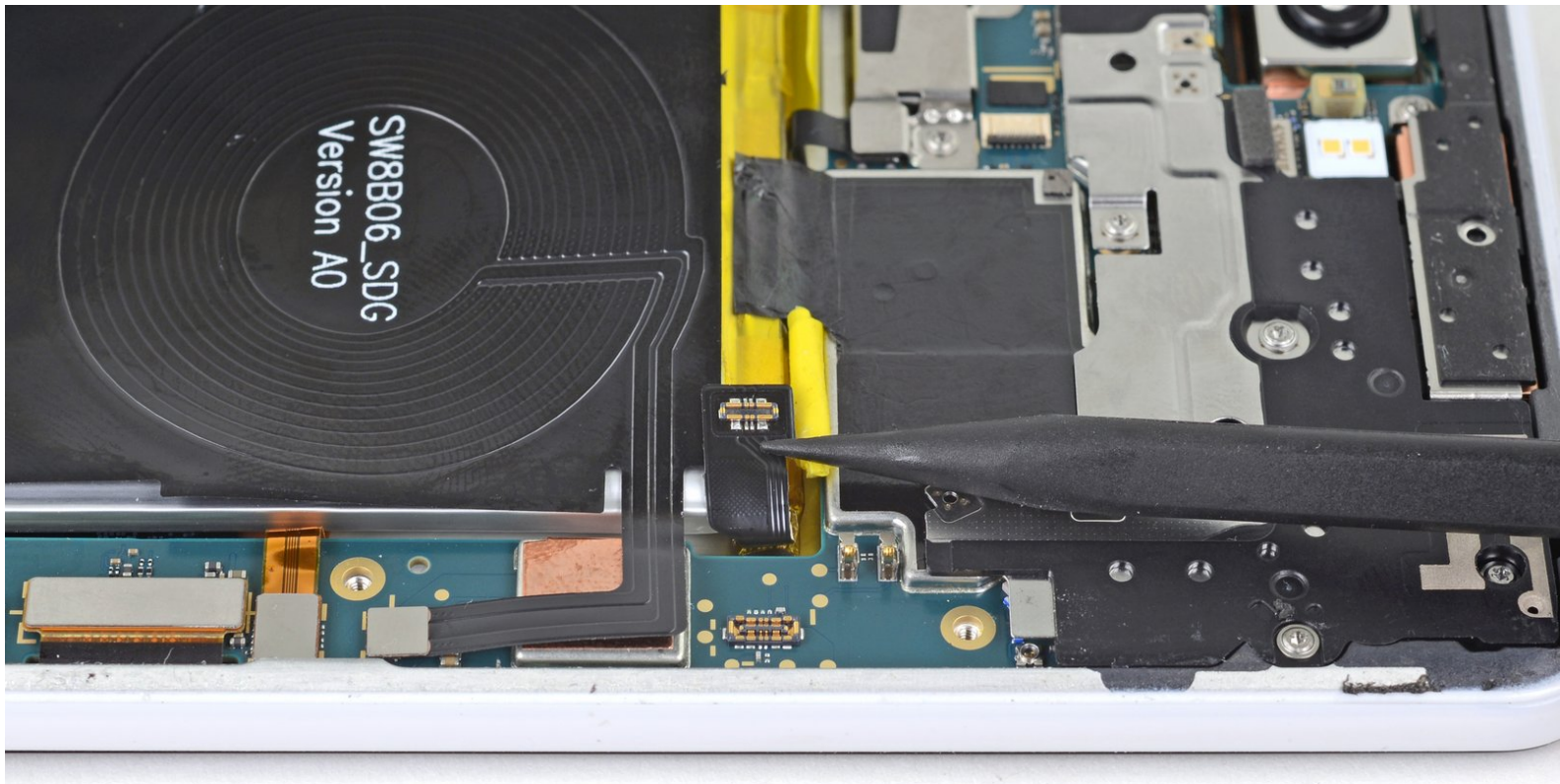




# Google Pixel 3 XL Battery Disconnect

Prerequisite guide only! Battery disconnect procedure for the Pixel 3 XL.

Written By: Arthur Shi



# INTRODUCTION

This is a prerequisite guide! This guide is part of an another procedure and is not meant to be used alone.



## TOOLS:

- [Spudger](#) (1)
  - [T3 Torx Screwdriver](#) (1)
-

## Step 1 — Remove the metal cover bracket screws



- Remove the following four T3 screws securing the metal cover bracket:

- Three 4 mm long screws
- One 3 mm long screw

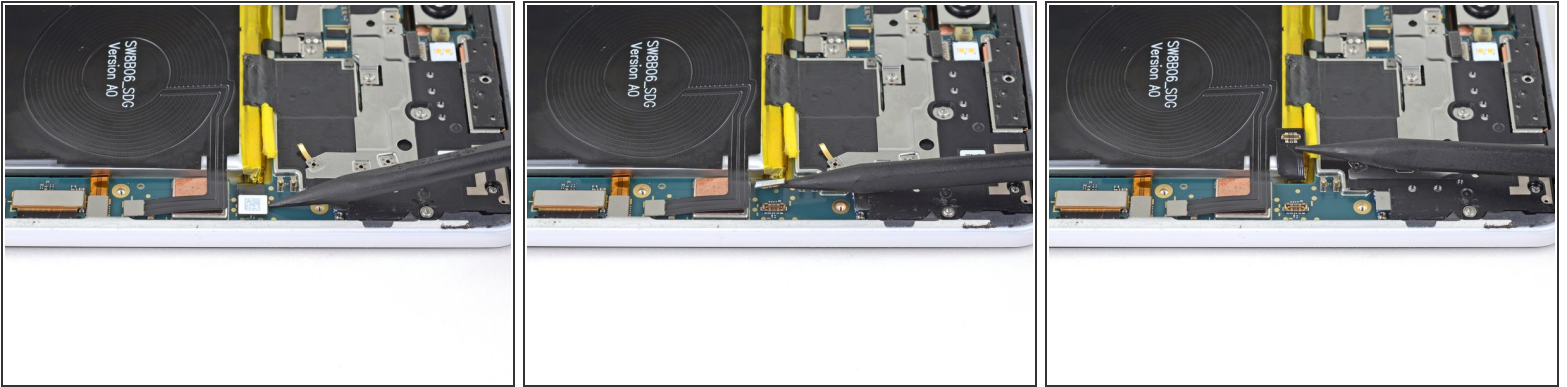
☑ Throughout this repair, [keep track of each screw](#) and make sure it goes back exactly where it came from.

## Step 2 — Remove the metal cover bracket



- Insert the flat end of a spudger underneath the top right edge of the metal bracket and pry up to loosen it.
- Remove the metal cover bracket.

## Step 3 — Disconnect the battery



- Use the point of a spudger to pry up and disconnect the battery connector from its socket.  
**⚠ Do not use metal tools to to disconnect the battery, or you will risk shorting the battery.**
- Bend the battery cable such that the connector will not accidentally touch the socket.

To reassemble your device, follow these instructions in reverse order.