



Disassembling Logitech MBJ58 Mouse Scroll wheel from mount

You will part the scroll wheel from the mount.

Written By: Maximilian Betkowski



INTRODUCTION

This guide shows how to disassemble and remove the scroll wheel of the Logitech MBJ58 optical scroll mouse. This might be necessary if the wheel is stuck, difficult to turn, or dislodged. If it becomes dislodged, it can cause additional damage to the mouse's motherboard, which is located beneath the wheel.

The scroll wheel may become jammed if the support spring that holds it in place is dislodged. To see how to repair that, as well as how to deconstruct other parts of the mouse, see the Logitech MBJ58 mouse [troubleshooting guide](#).



TOOLS:

- [Phillips #1 Screwdriver](#) (1)
-

Step 1 — Top cover



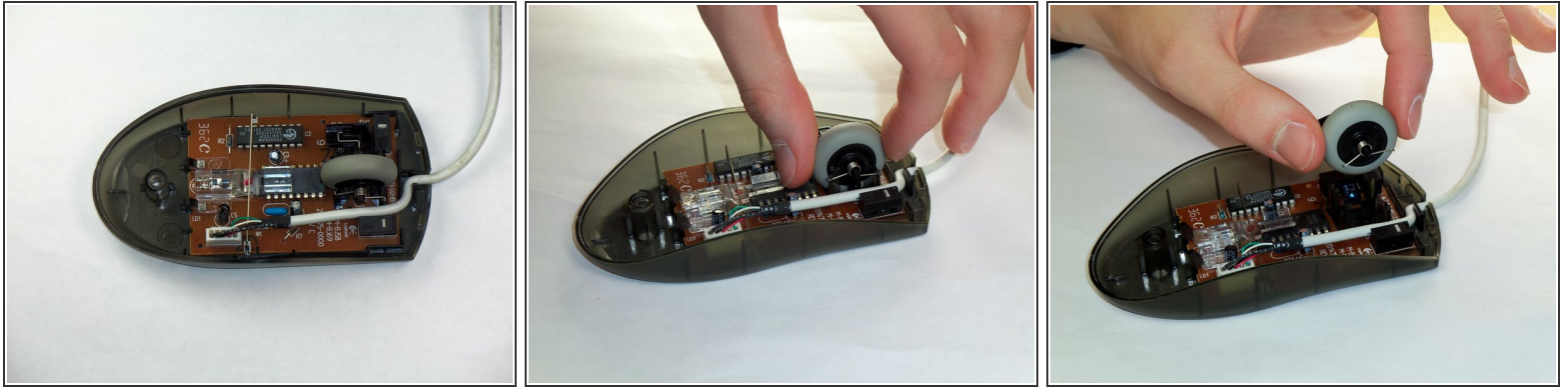
- Hold the mouse so that the bottom is facing up.
- Remove the single Phillips #1 screw from the bottom half of the mouse.

Step 2



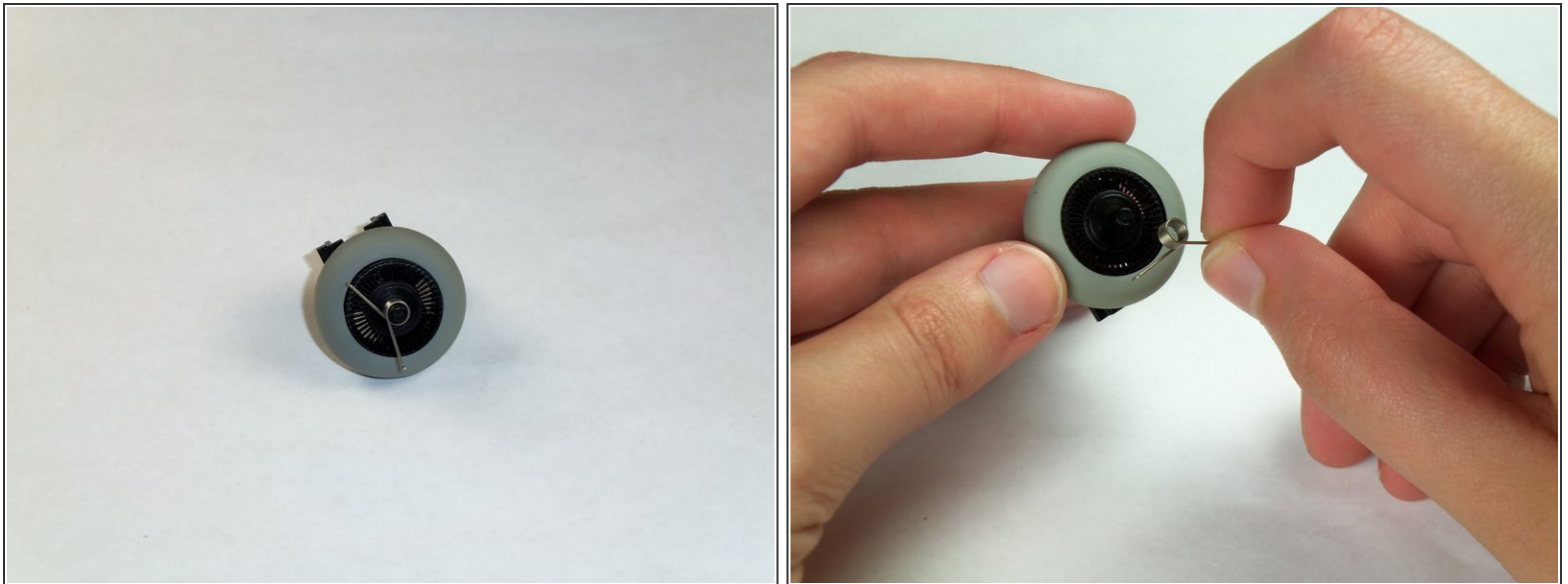
- Place the mouse so that the bottom is resting against a hard surface.
- Lift the top cover of the mouse gently, and remove it.

Step 3 — Removing the Logitech MBJ58 Mouse Scroll Wheel



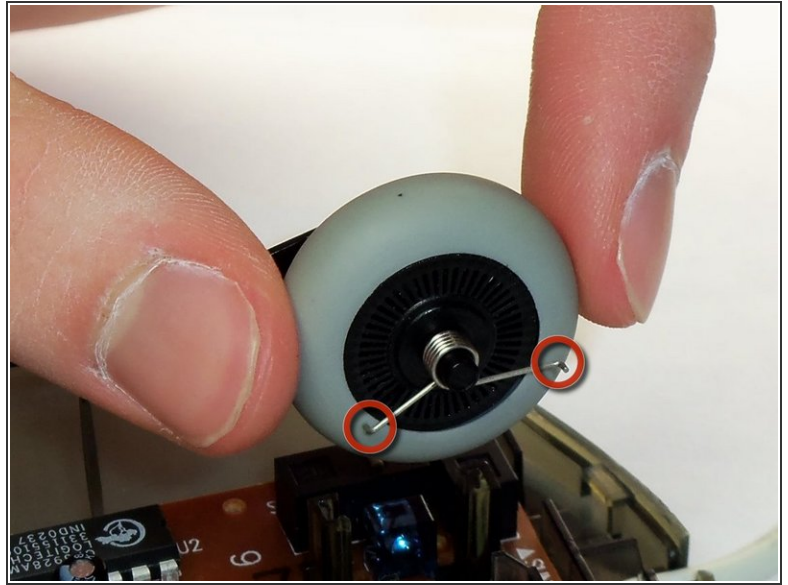
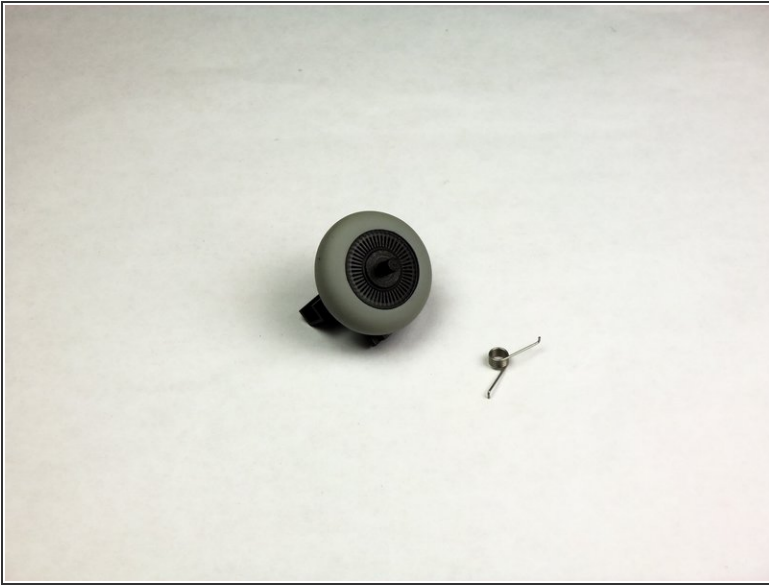
- Locate the scroll wheel on the mouse.
- Grab the scroll wheel with your thumb and index finger.
- Gently lift up, to remove the scroll wheel from the mouse.

Step 4 — Support Spring



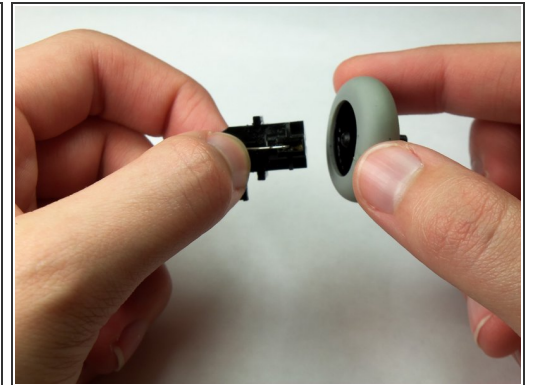
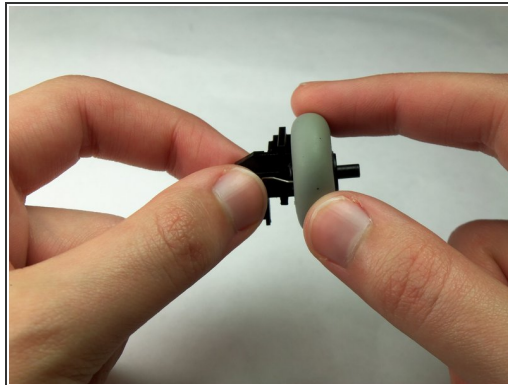
- Locate the spring on the scroll wheel, and carefully remove the spring.


Step 5 — Attaching the New Spring



- Place the replacement spring on the correct side of the wheel (shown in the images) with the prongs pointing down.

Step 6 — Disassembling Logitech MBJ58 Mouse Scroll wheel from mount



- Use the images to locate where the resistance spring is.
 **This spring will easily fall off.**
- Grab the scroll wheel and its mount and gently pull them apart.

To reassemble your device, follow these instructions in reverse order.