



Dell Inspiron 13-7373 Fan Replacement

Use this guide to replace a malfunctioning fan ...

Written By: Kameron Jusseaume



INTRODUCTION

Use this guide to replace a malfunctioning fan in your Dell Inspiron 13-7373.

Having a fan in a laptop is extremely important because the fan reduces the device's operating temperature which both limits heat exposure to the hardware and allows the device to operate in a stable condition.

A common problem that would require a replacement is when the fan blades stop working due to dust and dirt accumulation. This can often be determined if the fan is making loud and unusual noises as the computer is running. Another method to determine the malfunction is by putting your hand into the heat sink on the laptop side and feel whether there is heat, airflow is being pushed out. If you don't feel the hot airflow from your laptop, take appropriate precautions to cool down your laptop. Bear in mind that, overheating can result in regular laptop crashes and freezing.

Before you begin to replace the fan make sure:

- you find the appropriate fan for the device because not all kinds of fans work on all devices.
- to power off the laptop and disconnect it from any external power source.

Be sure to pay attention to all of the steps and use the right equipment during the replacement process.

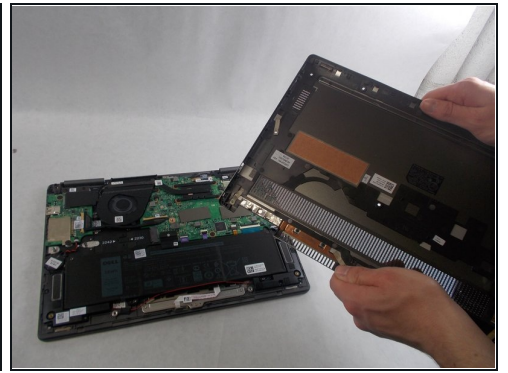
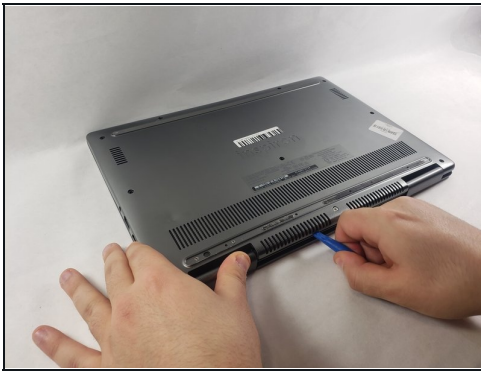
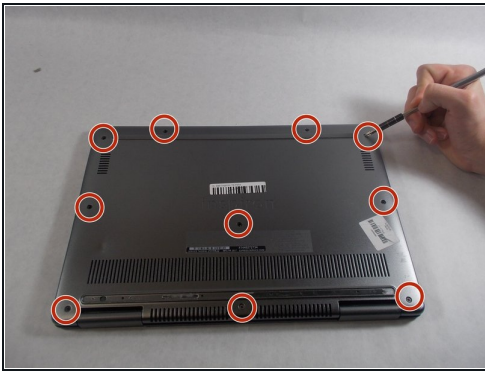
TOOLS:

[Phillips #00 Screwdriver](#) (1)

[iFixit Opening Tool](#) (1)

[Phillips #0 Screwdriver](#) (1)

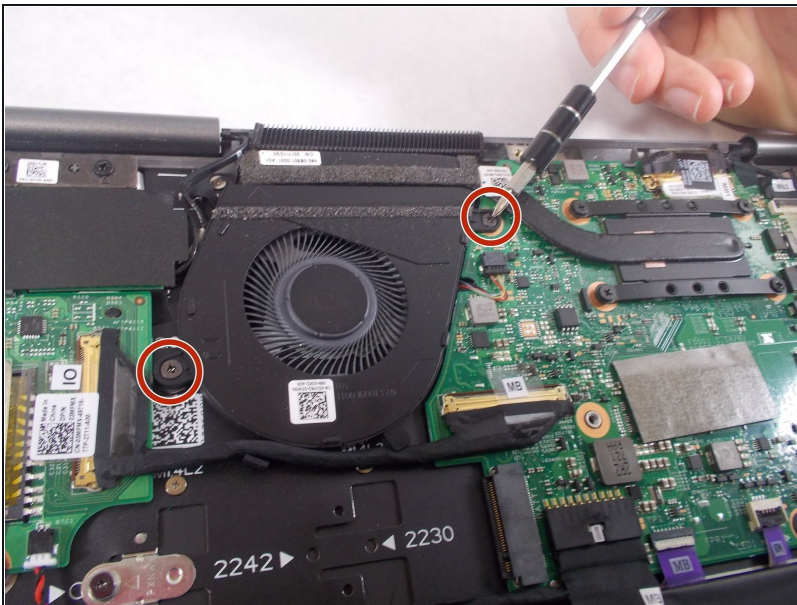
Step 1 — Back Cover



i Before you begin, be sure to turn off your laptop and unplug it from the outlet.

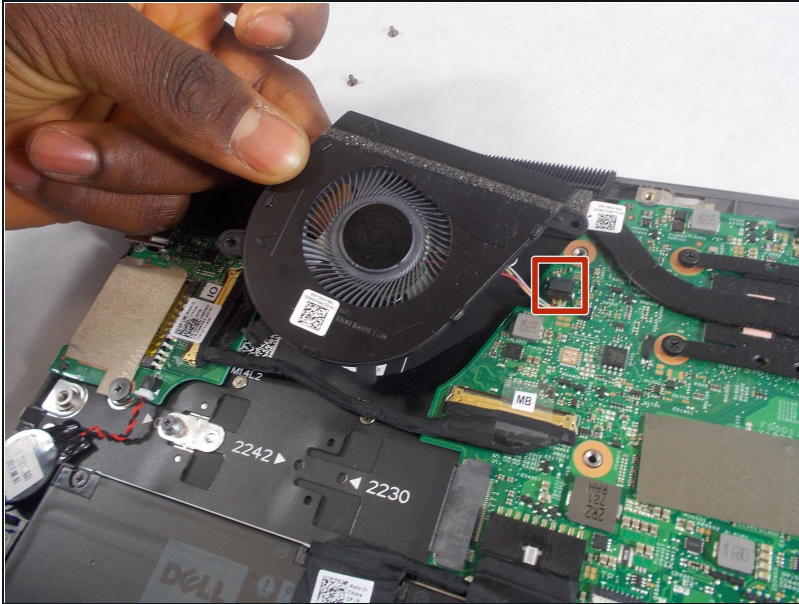
- Remove the ten 7.5mm Phillips #00 screws from the bottom of the laptop.
- Use an opening tool to remove the bottom half of the case from the laptop.

Step 2 — Fan



- Remove the two screws holding the cover for the fan.

Step 3



- Unplug the connector holding the fan's wires.
- Remove the fan from the laptop.

To reassemble your device with the new fan, follow these instructions in reverse order.