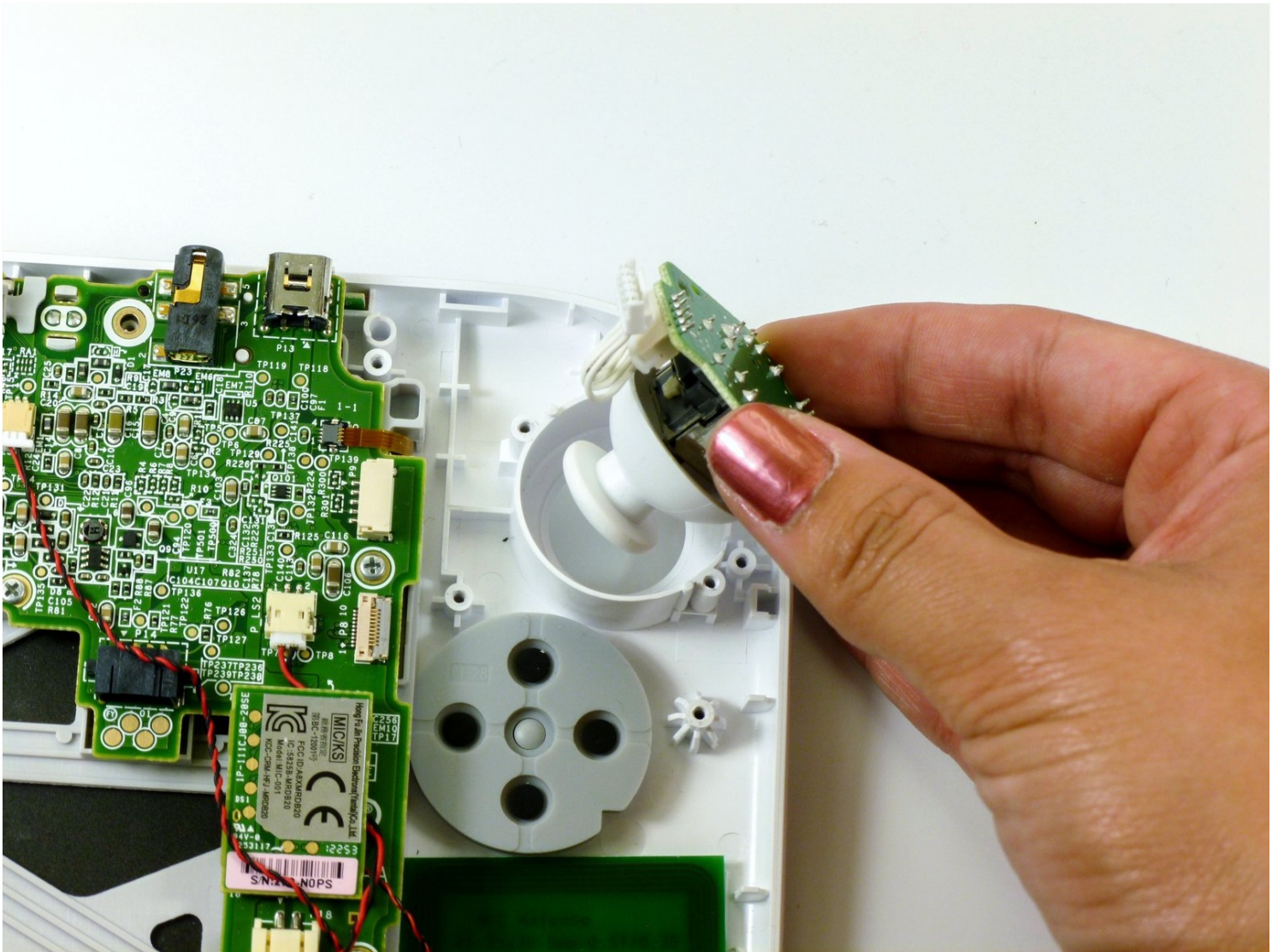




# Nintendo Wii U GamePad Analog Stick Replacement

Use this guide to replace the analog stick in...

Written By: Kim Arre



# INTRODUCTION

Use this guide to replace the analog stick in your Nintendo Wii U GamePad.

## 🔧 TOOLS:

Phillips #0 Screwdriver (1)  
Phillips #00 Screwdriver (1)  
Tri-point Y0 Screwdriver (1)  
Y1 Tri-point Screwdriver (1)

## ⚙️ PARTS:

Nintendo Wii U GamePad Joystick (1)  
Nintendo Wii U GamePad Right Joystick Board (1)  
Nintendo Wii U GamePad Left Joystick Board (1)

## Step 1 — Battery



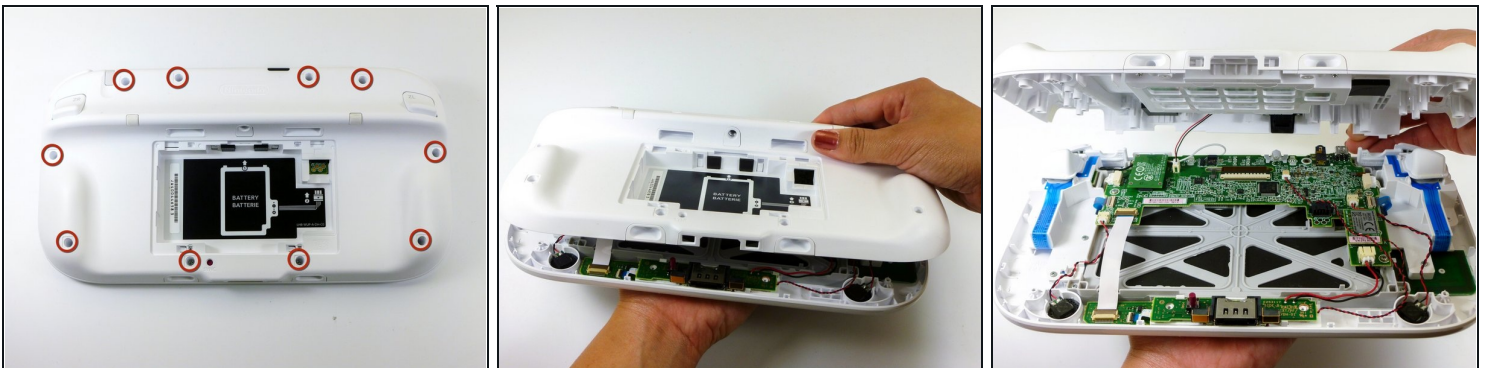
- Face the GamePad down and unscrew the two Phillips #00 screws which are attached to the battery cover.
- Lift up and remove the battery cover.

## Step 2



- With your finger on the battery connector, pull downwards toward the base of the GamePad to disconnect it.
- Pull upwards from the bottom of the battery to release it.

## Step 3 — Outer Case

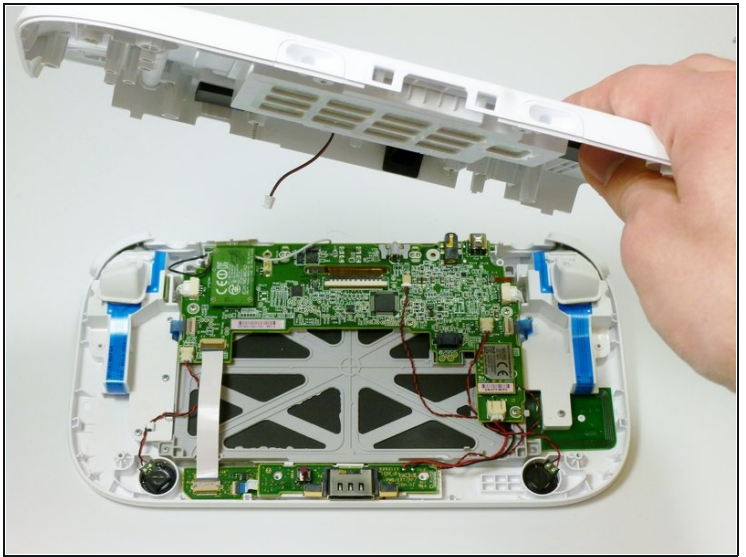
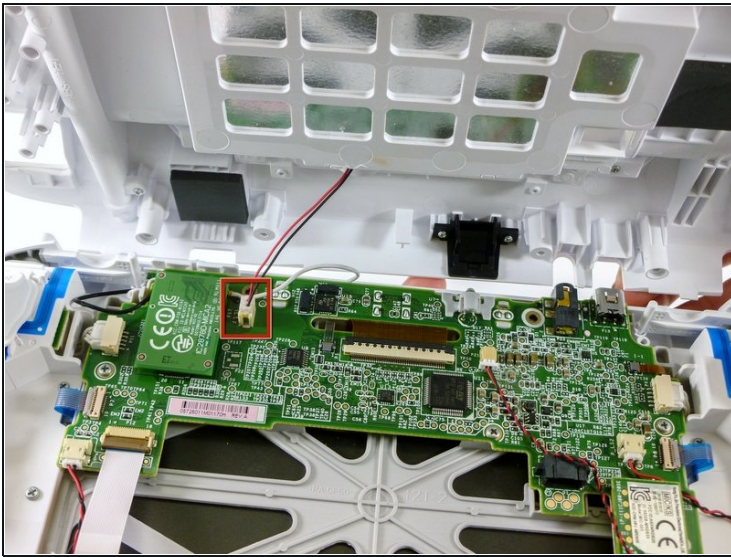


- Remove the ten 8.9mm Tri-wing Y1 screws hidden underneath square stickers.
- Lift up the back plate.

⚠ The back plate is still connected by a cable to the motherboard.

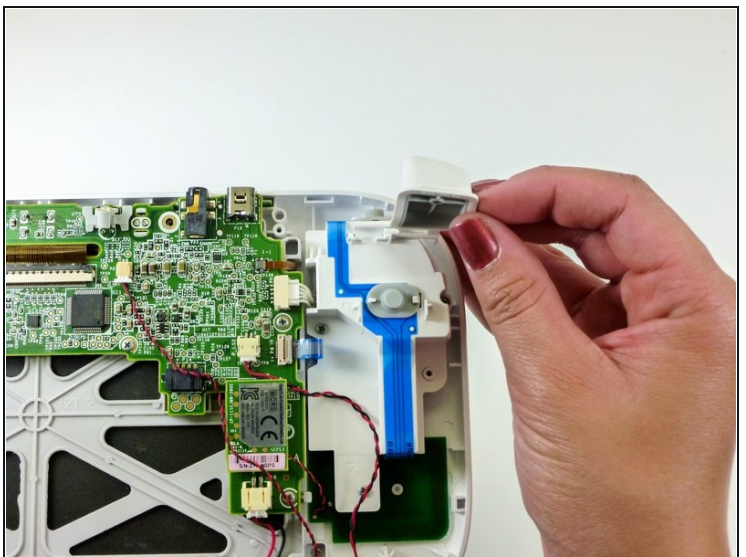
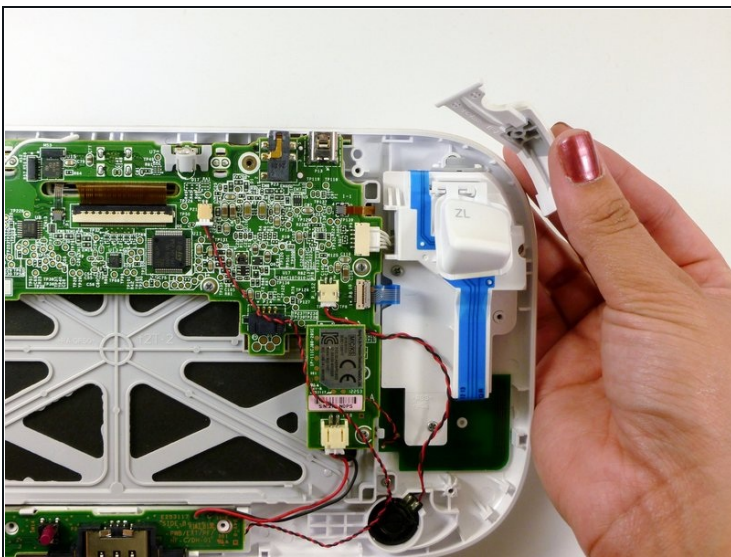


## Step 4



- Unplug the connector that connects the back plate to the motherboard.
- Remove the back plate.

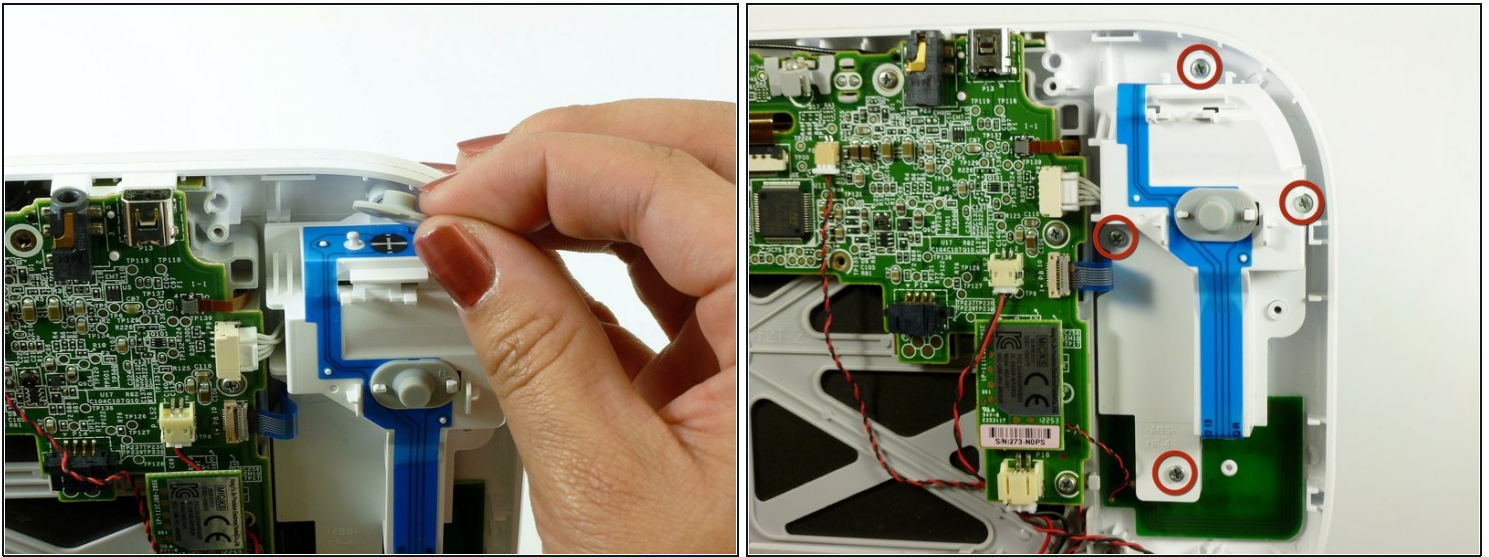
## Step 5 — Analog Stick



- Take out the left and right shoulder buttons in the upper corners.
- Remove the ZR and ZL trigger buttons by lifting up and sliding outward.

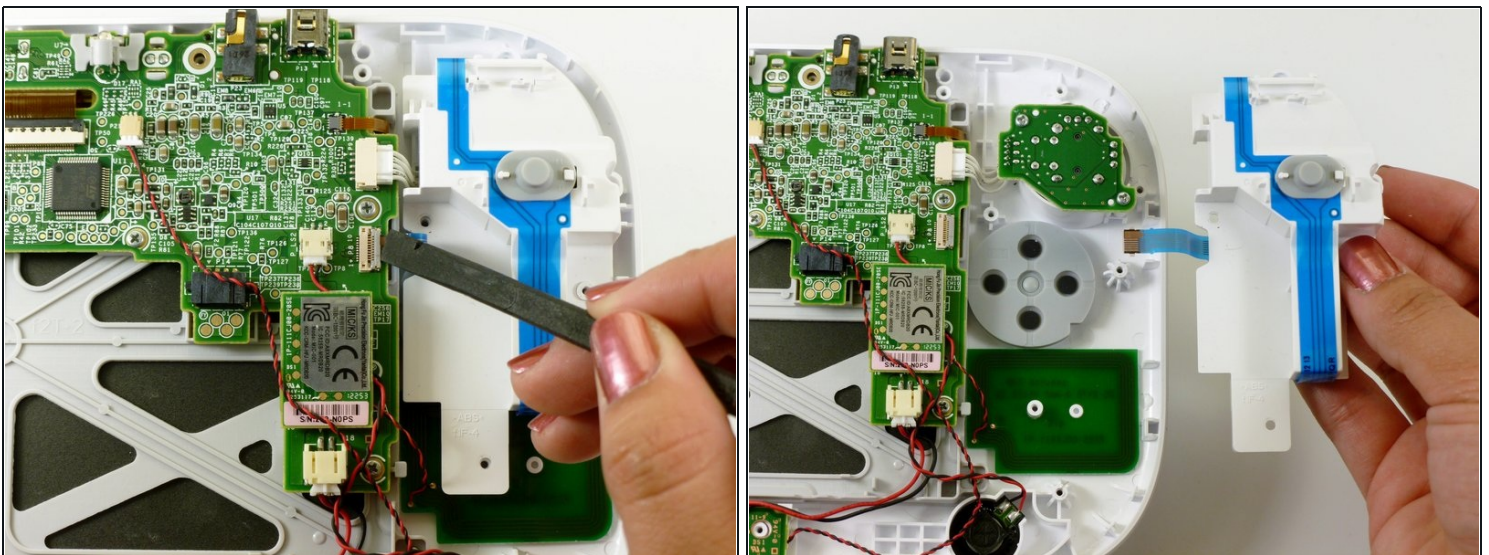


## Step 6



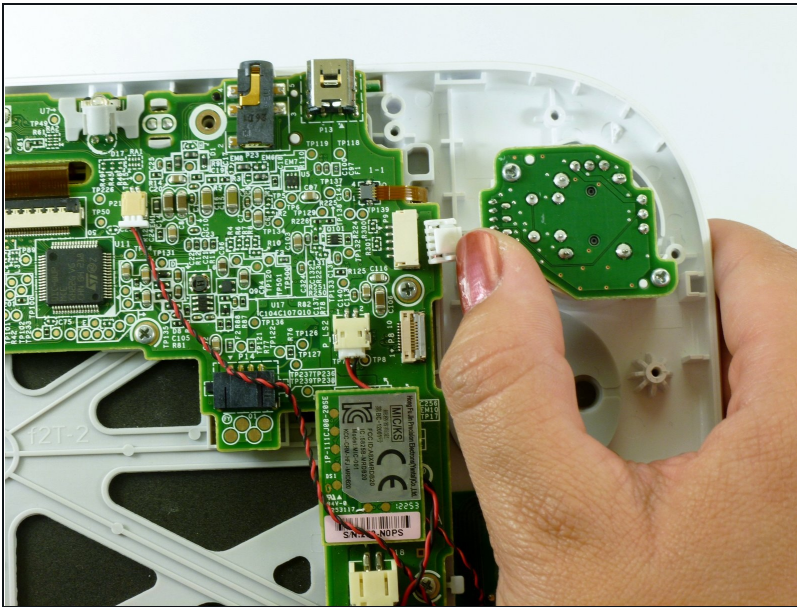
- Remove the top rubber cover by pulling it off of its mounts to access one of the mounting screws.
- Remove the four 5.2mm Phillips #0 screws.

## Step 7



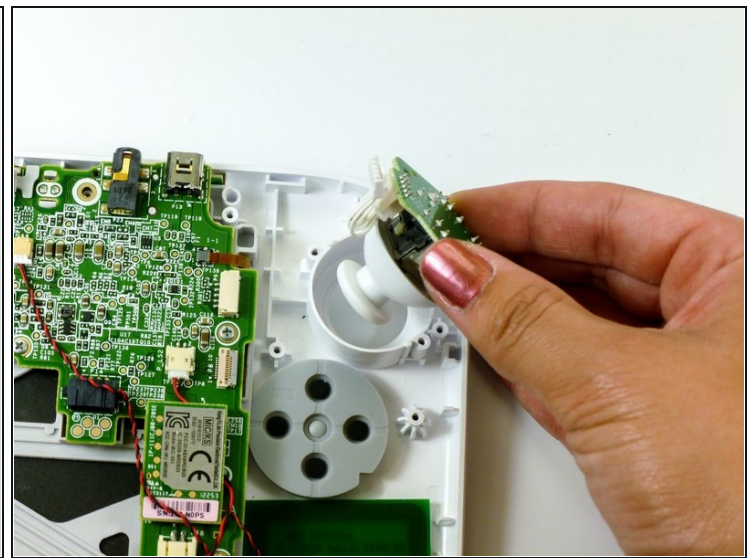
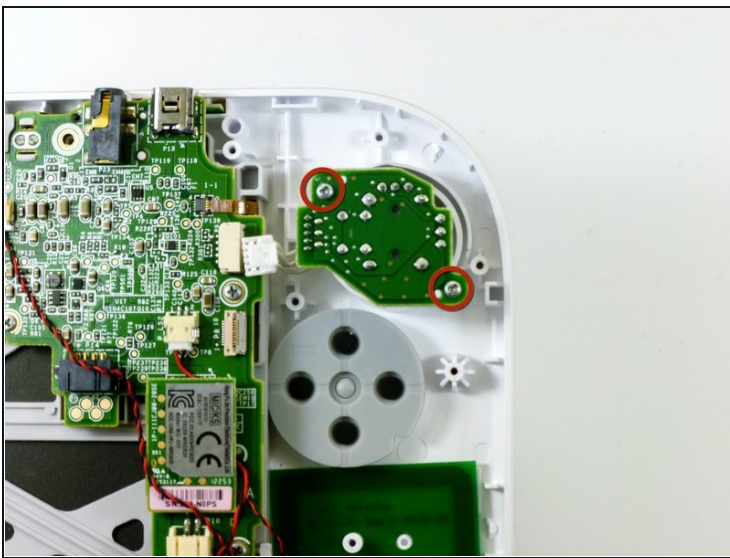
- Use a spudger to lift the tab which releases the blue ribbon cable.
- Remove the analog stick and button cover.

## Step 8



- Use your thumb and push the connector towards the rightmost edge to disconnect the analog stick cable connector.

## Step 9



- Remove the two 9.0mm Tri-wing Y0 screws.
- Lift out the analog stick.

To reassemble your device, follow these instructions in reverse order.