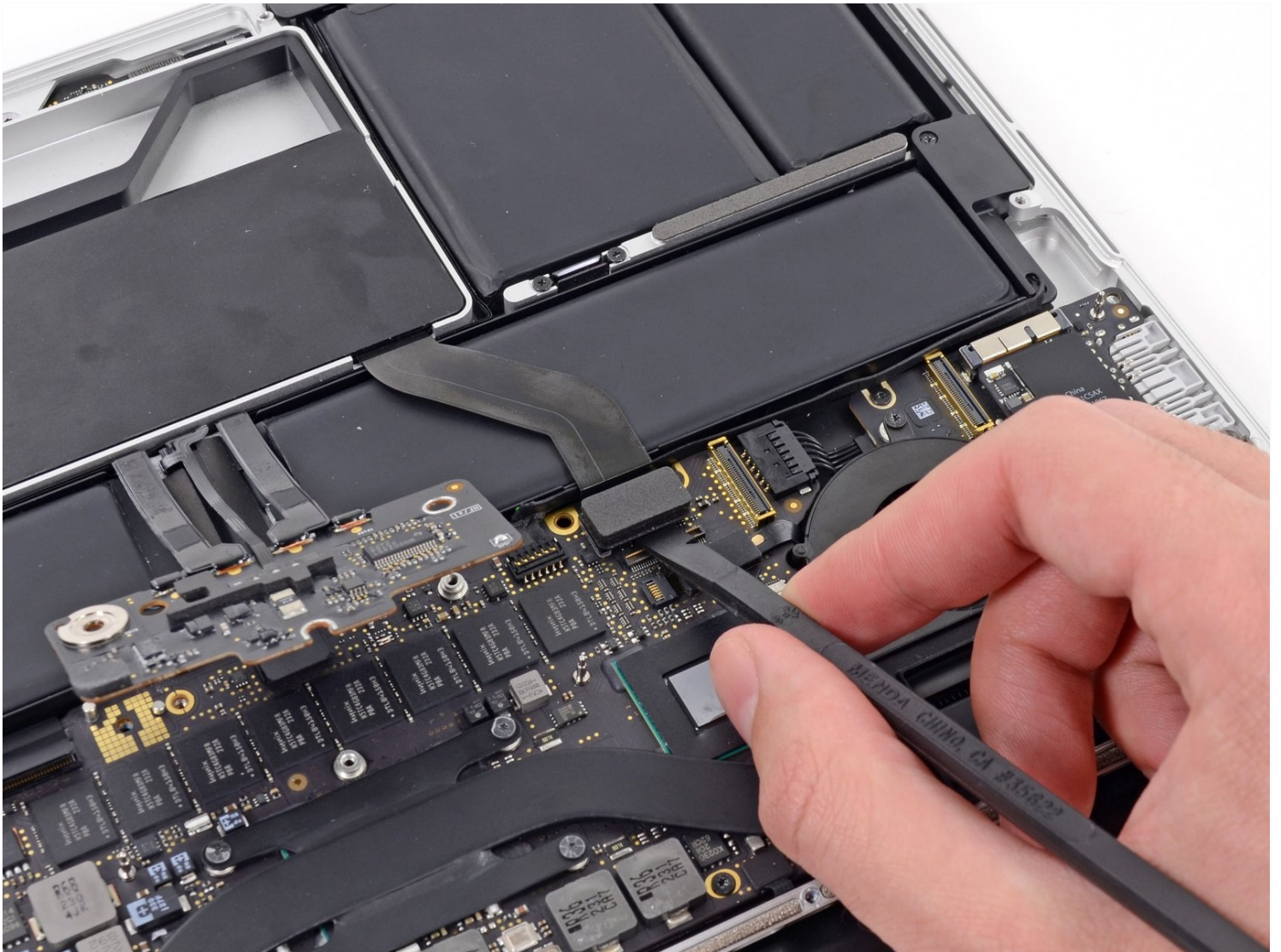




# MacBook Pro 13" Retina Display Late 2012 Right Speaker Replacement

Use this guide to replace the right speaker.

Written By: Walter Galan



# INTRODUCTION

Use this guide to replace the right speaker.

## TOOLS:

MacBook Pro and Air 5-Point Pentalobe Screwdriver (1)  
iFixit Opening Tool (1)  
Spudger (1)  
T5 Torx Screwdriver (1)  
T6 Torx Screwdriver (1)  
Tweezers (1)

## PARTS:

MacBook Pro 13" Retina (Late 2012-Early 2013) Right Speaker (1)

## Step 1 — Lower Case



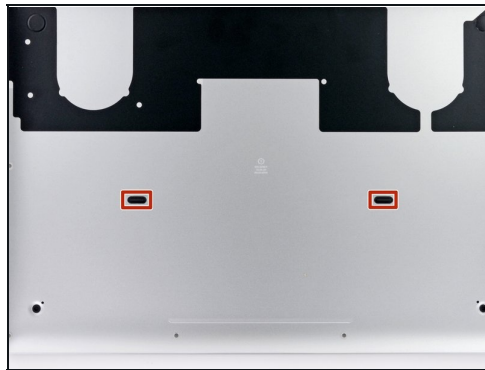
- Remove the following ten screws securing the lower case to the upper case:
  - Two 2.3 mm P5 Pentalobe screws
  - Eight 3.0 mm P5 Pentalobe screws
- ☑ Throughout this repair, [keep track of each screw](#) and make sure it goes back exactly where it came from to avoid damaging your device.

## Step 2



- Wedge your fingers between the upper case and the lower case.
- Gently pull the lower case away from the upper case.
- Remove the lower case and set it aside.

## Step 3



- ★ During reassembly, gently push down the center of the lower case to reattach the two plastic clips.
- The lower case is connected to the upper case at the center, with two plastic clips.

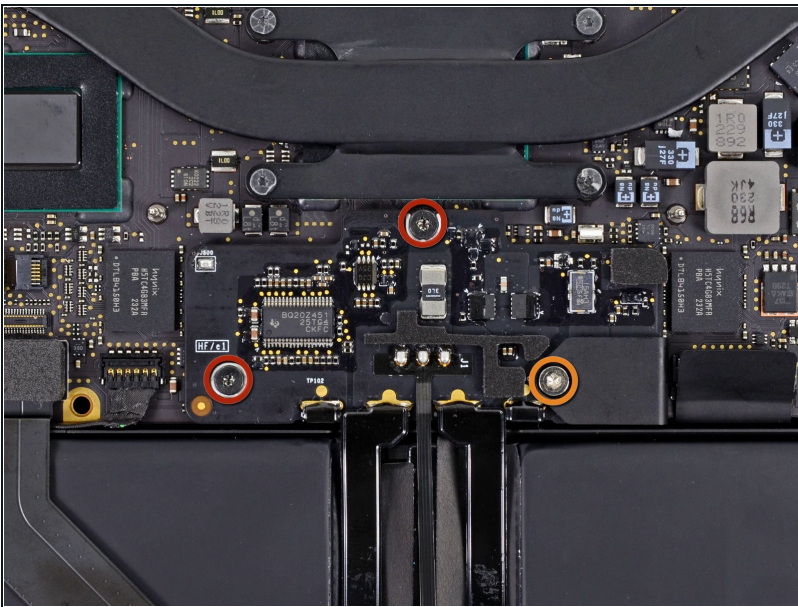


## Step 4 — Battery Connector



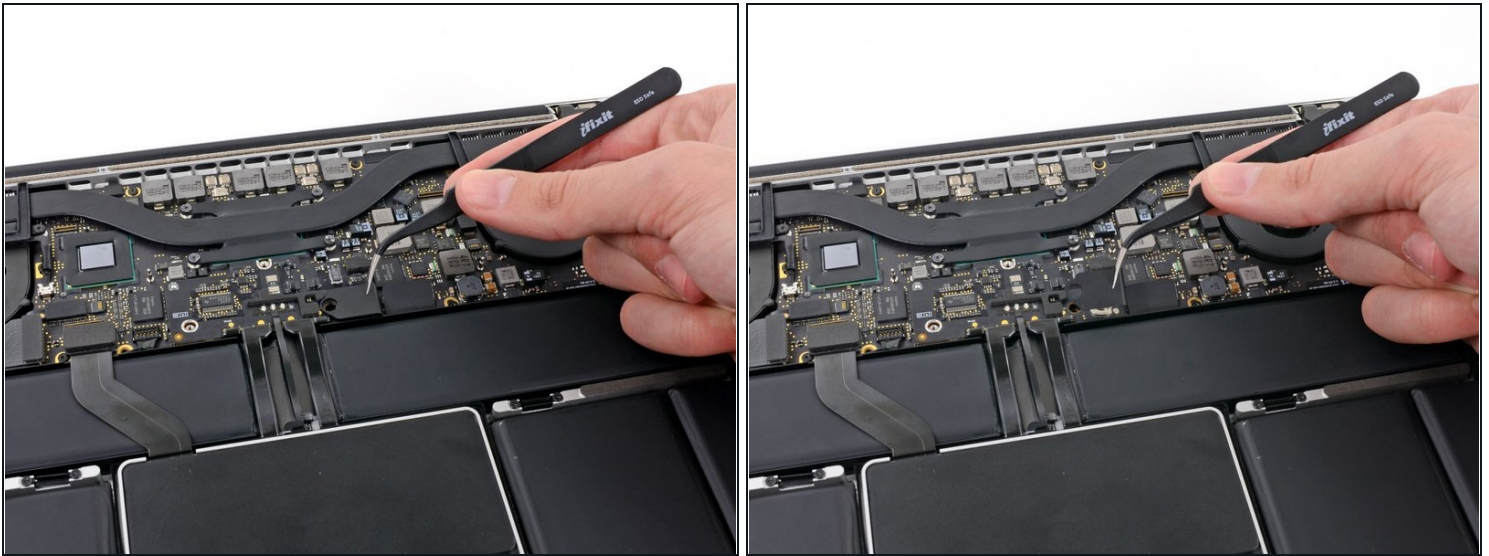
- Remove the plastic cover adhered to the battery contact board.

## Step 5



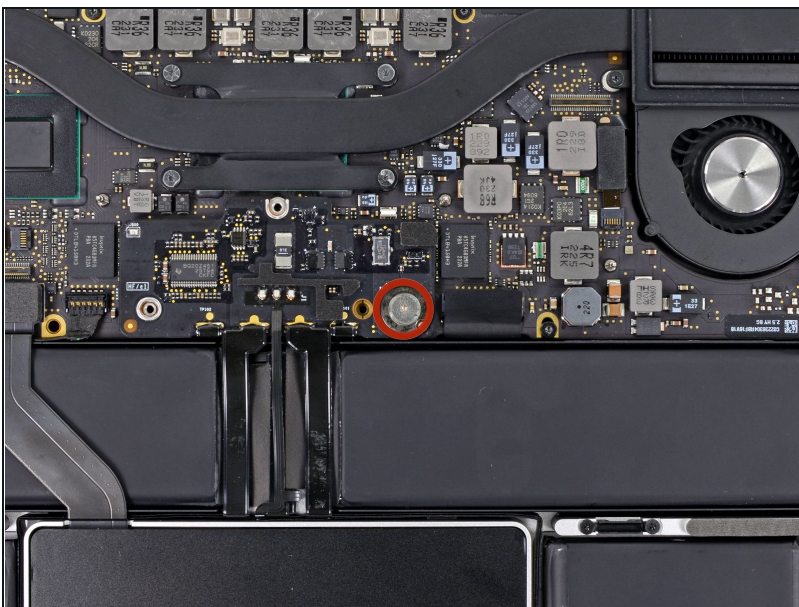
- Remove the following screws securing the battery connector board to the logic board:
  - Two 2.8 mm T6 Torx screws
  - One 7.0 mm T6 Torx shouldered screw

## Step 6



- Use [tweezers](#) to remove the small plastic cover located near the bottom right of the battery connector board.

## Step 7



- Remove the wide head 6.4 mm T6 Torx screw securing the battery connector to the logic board assembly.

## Step 8

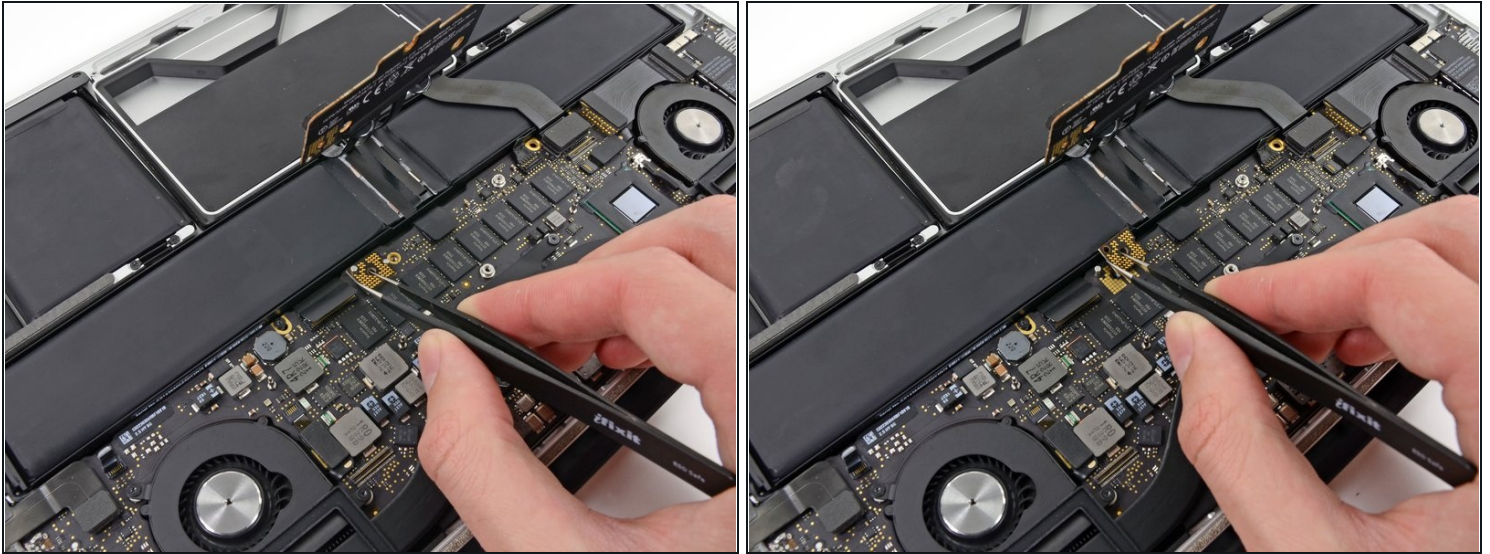


- Carefully lift the battery connector board up off the logic board.
- It is recommended to bend the battery cables just slightly, to keep the board suspended up above the logic board and out of the way.

**⚠ Do not fold the board completely over, or crease the cables, as this may damage the battery.**

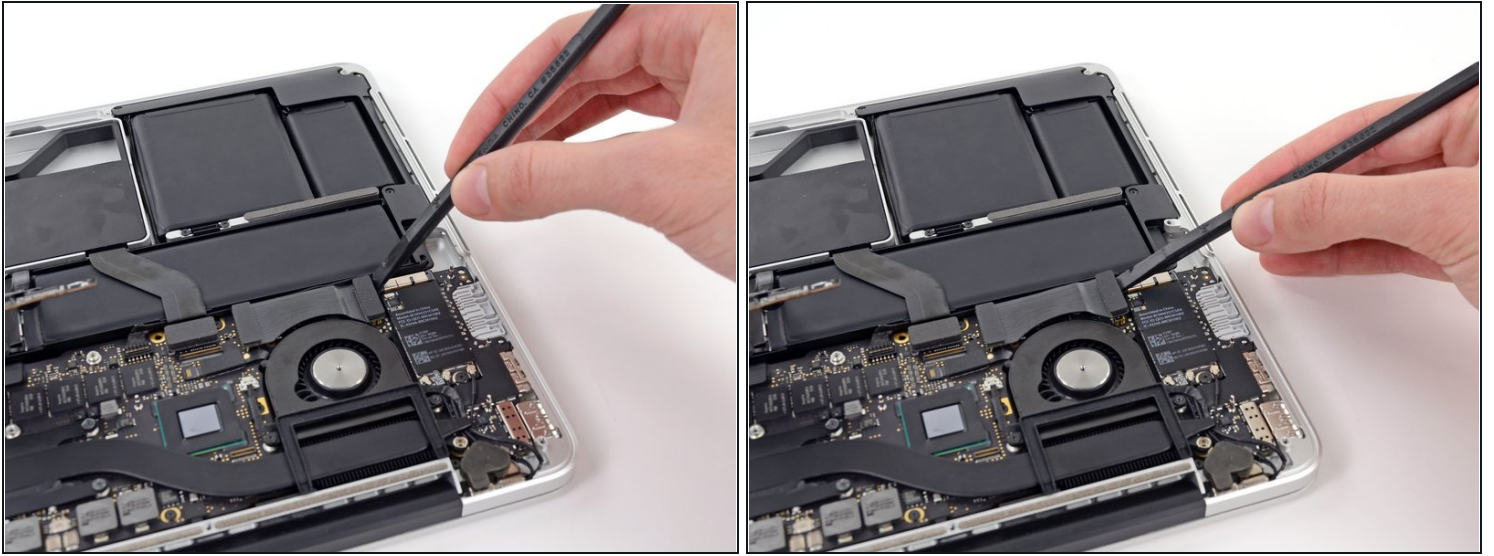


## Step 9 — Battery Contact Board



- Grasp the Interposer with [tweezers](#).
  - ① An interposer is the name for an interface that links one electrical connection to another. In this repair, it is the board connecting the battery to logic board.
- Lift the Interposer off the logic board and remove it.
  - ⚠ Removing this board will ensure that the battery remains disconnected throughout your repair, preventing your computer from accidentally powering on. It's also a good idea to take it out so it doesn't fall out unexpectedly.

## Step 10 — I/O Board Data Cable



- Use the flat end of a spudger to pry the right side of the I/O board data cable connector up off its socket on the I/O board.

⚠ When prying the I/O board data cable connector from its socket, make sure to pry the connector itself and not the socket. Prying the socket may cause irreversible damage to the I/O board.

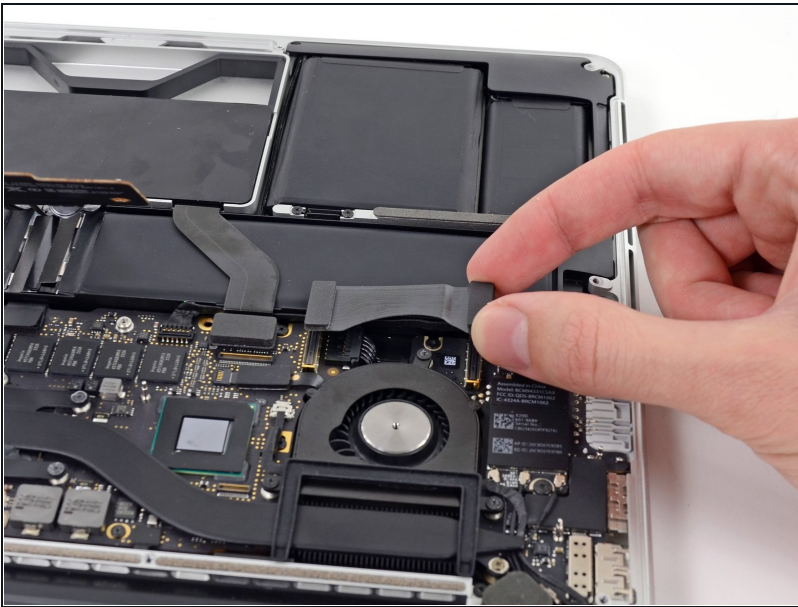


## Step 11



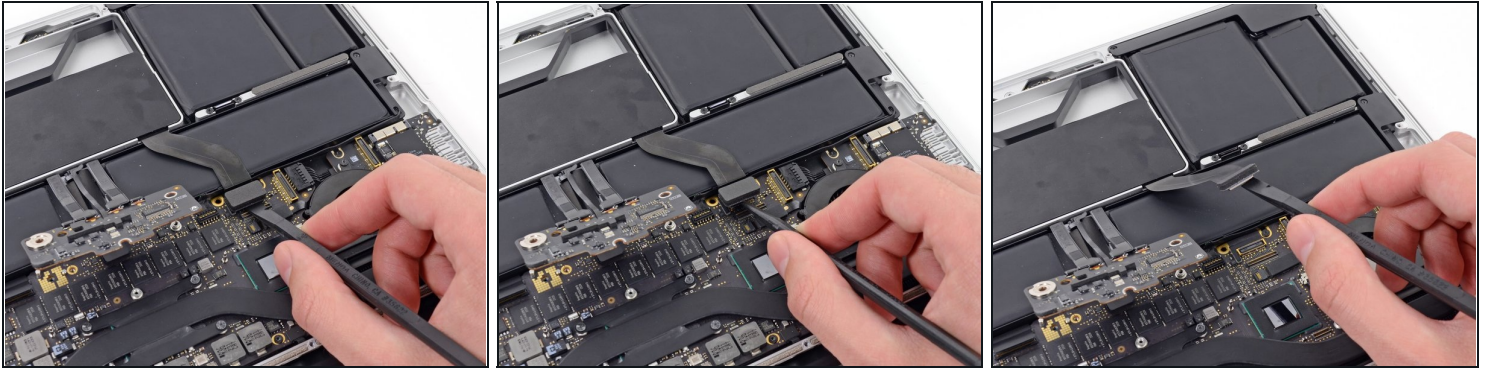
- Wedge the flat end of a spudger beneath the left side of the I/O board data cable connector.
- Gently twist the spudger to disconnect the I/O board data cable connector from its socket on the logic board.

## Step 12



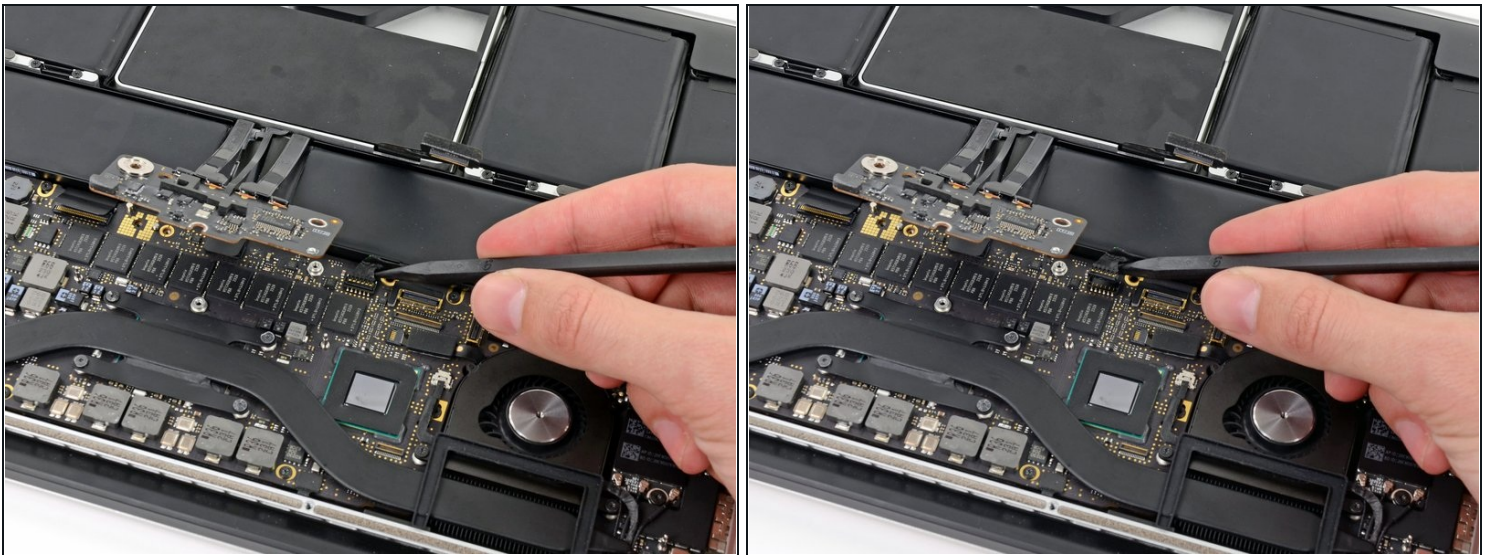
- Lift and remove the I/O board data cable from the MacBook Pro.

## Step 13 — Right Speaker



- Use the flat end of a spudger to pry the SSD cable connector up from its socket on the logic board.
- Move the SSD cable connector out of the way.

## Step 14



- Wedge the pointed end of a spudger beneath the right speaker cable connector.
- Gently pry the right speaker cable connector up off from its socket on the logic board.

⚠ Be sure you are prying up on the connector, **not** the socket itself.



## Step 15



- Use a T5 Torx driver to remove the following screws securing the right speaker to the upper case:
  - One black 6.8 mm screw
  - One silver 6.3 mm screw
  - One black 4.9 mm screw
- ① The silver screw (in the corner) may be covered with a foam pad. If so, use your [tweezers](#) to peel it up and remove it.



## Step 16



- Lift and remove the right speaker out of the upper case.
  - ☑ If necessary, de-route the right speaker cable from its channel in the upper case.
- 

To reassemble your device, follow these instructions in reverse order.