

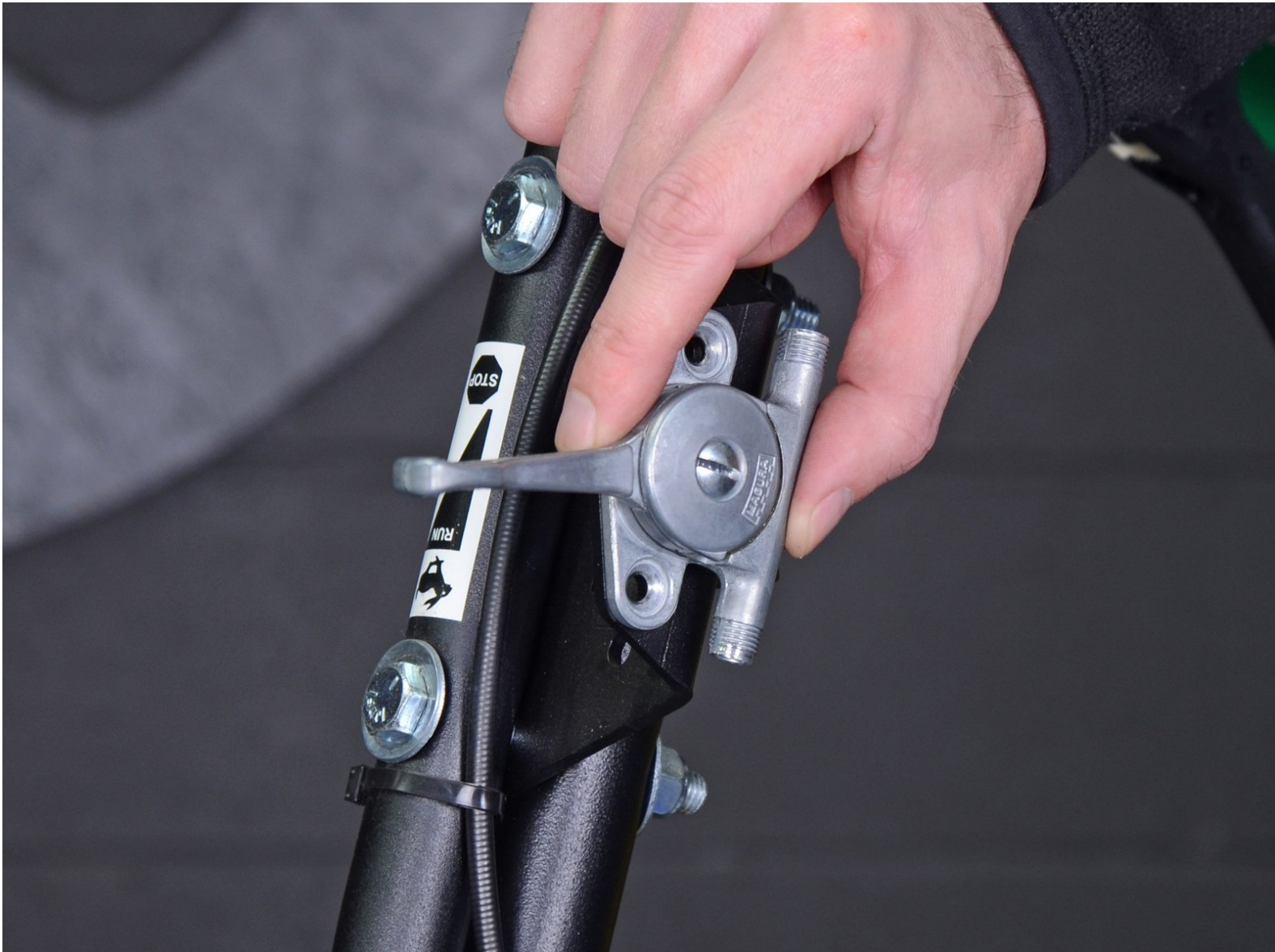


# Billy Goat Brush Cutter BC2600HHF 2015

## Throttle Control Replacement

Learn how to replace the throttle control.

Written By: Jeff Suovanen



## INTRODUCTION

Follow these instructions to replace a damaged throttle control. Optionally, you may also replace the attached throttle control cable.



### TOOLS:

- [Flush Wire Cutters](#) (1)
- [1/2" Wrench](#) (1)
- [7/16" Wrench](#) (1)
- [Phillips #2 Screwdriver](#) (1)
- [3/8" Wrench](#) (1)



### PARTS:

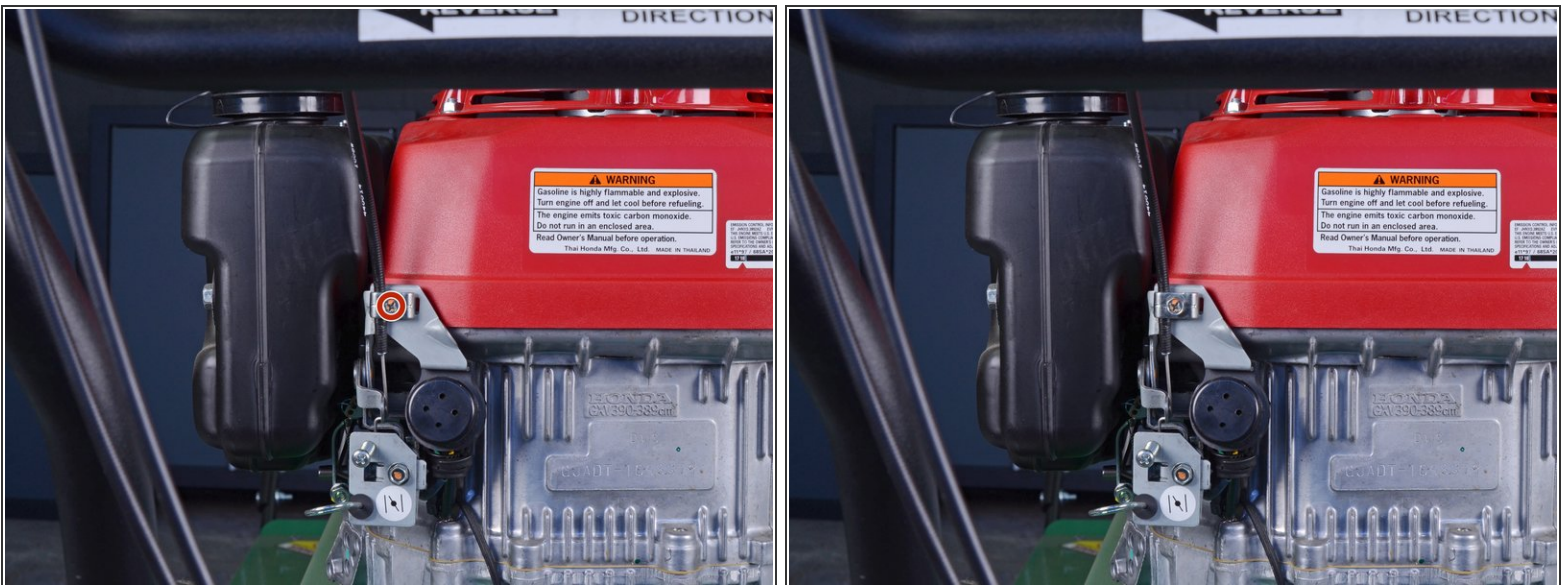
- [Billygoat Control Throttle 440013](#) (1)

## Step 1 — Throttle Cable



- Cut and remove any zip ties securing the throttle cable.

## Step 2



- Use a Phillips #2 driver to remove the screw securing the lower end of the throttle cable.

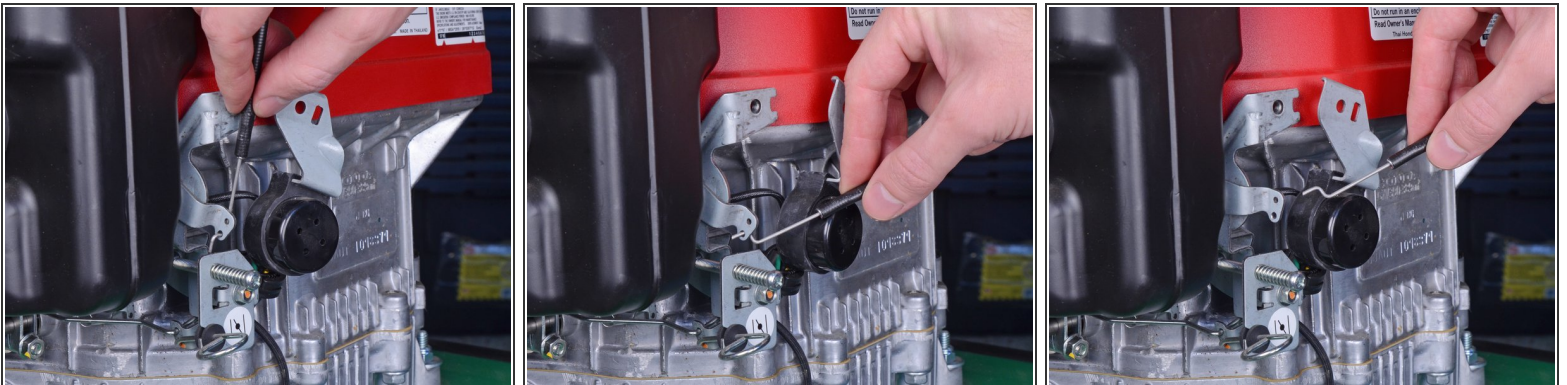


### Step 3



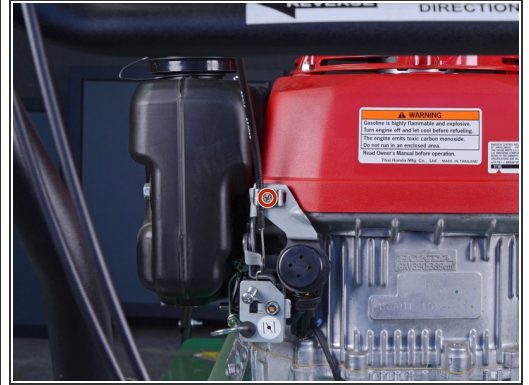
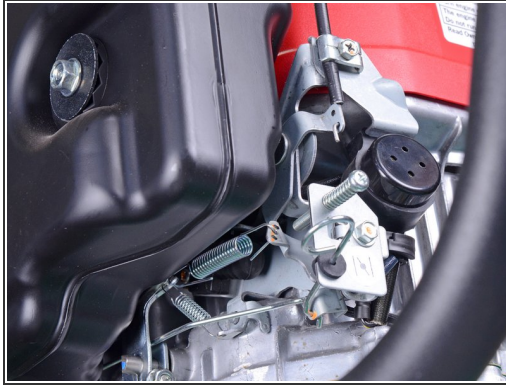
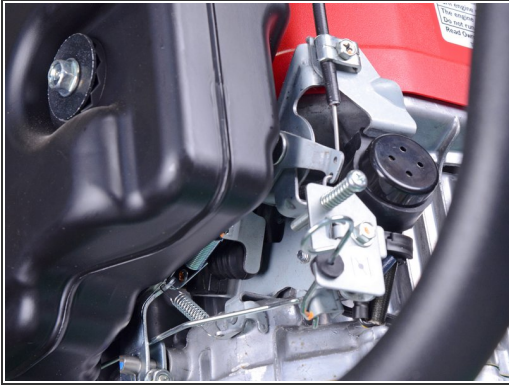
- Remove the bracket securing the lower end of the throttle cable.

### Step 4



- Rotate the lower end of the throttle cable to detach it from the throttle.

## Step 5



- ☑ When reinstalling the throttle control cable, check to make sure that the throttle control moves the throttle through its full range of motion.
  - If necessary, loosen the screw securing the lower end of the throttle cable and adjust the position of the cable. Re-tighten the screw and check to make sure that the throttle moves through its full range of motion.

## Step 6



- Use a 7/16" wrench or deep socket to remove the cap from the throttle control.



## Step 7



- Advance the throttle control to expose the gear rack containing the upper end of the throttle cable.

## Step 8



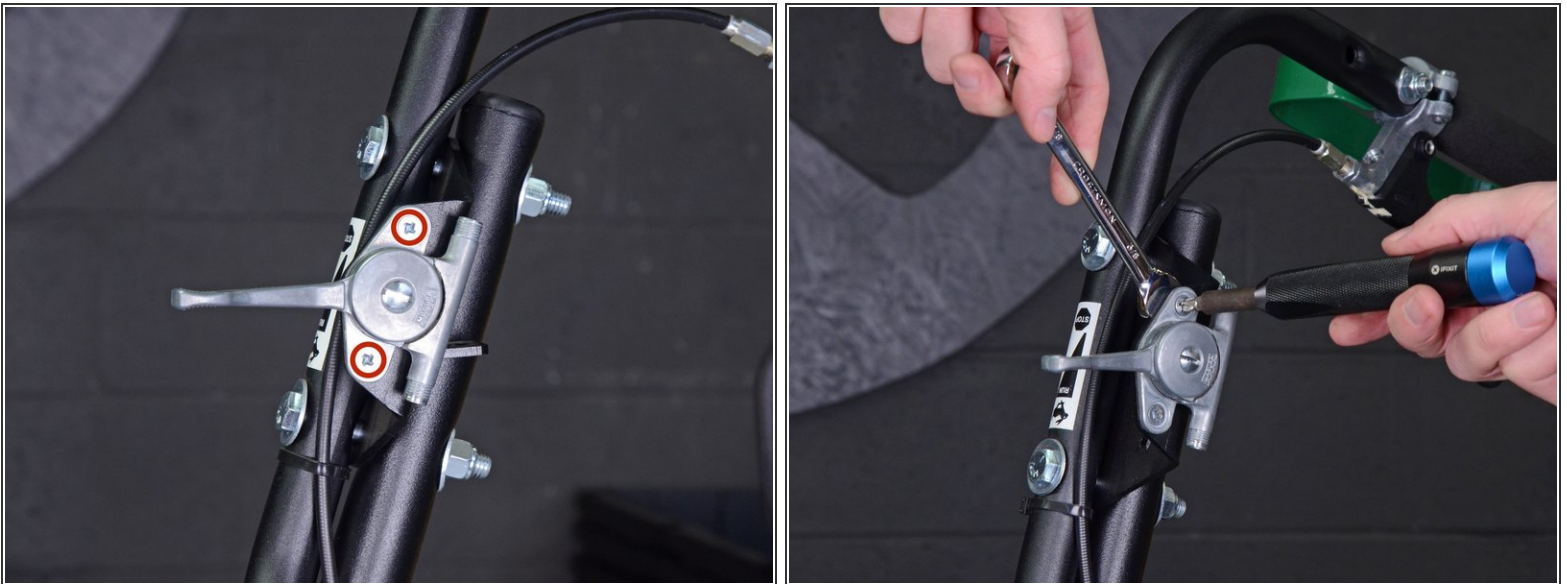
- Separate the gear rack from the upper end of the throttle cable.
- Lift and remove the gear rack from the throttle control.
  - If the gear rack doesn't fully detach, advance the throttle control lever a little farther.
- ✦ [Lubricate the gear rack](#) with a bit of lithium grease during reassembly.

## Step 9



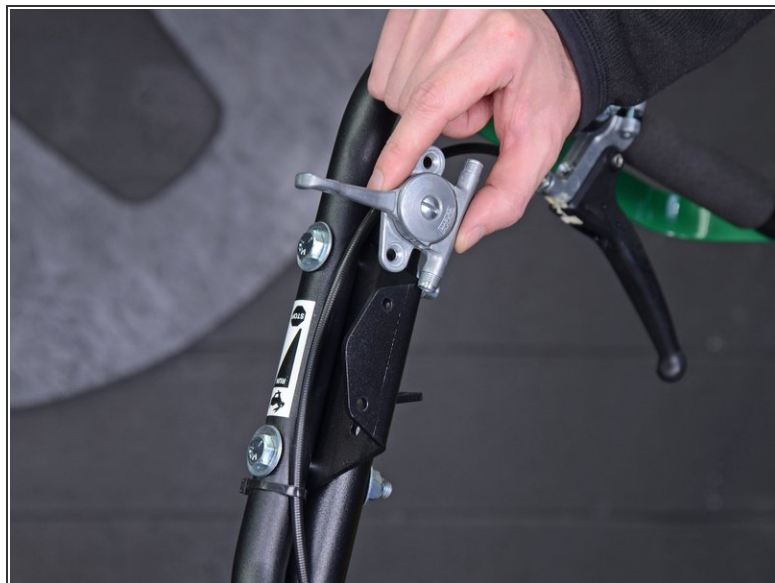
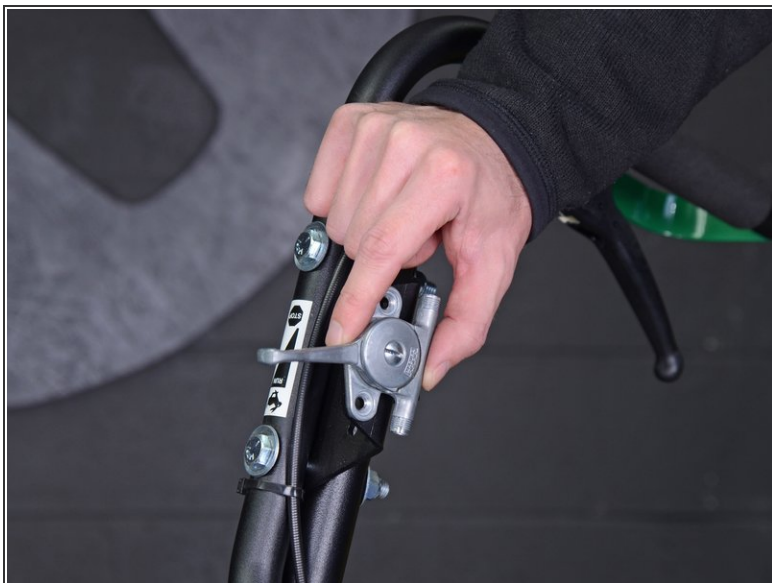
- Use a 1/2" wrench to unscrew the upper end of the throttle cable from the throttle control.
- Slide the throttle cable down out of the bottom of the throttle control, and remove the cable.

## Step 10 — Throttle Control



- Use a Phillips #2 driver to remove the two screws securing the throttle control.
- While removing the screws, use a 3/8" wrench to counter-hold the lock nuts and prevent them from rotating.

## Step 11



- Remove the throttle control.

To reassemble your device, follow these instructions in reverse order.