



# Portable Coby CD Player Drive Replacement

This guide will teach you how to remove the drive in a Portable Coby CD Player, enabling you to replace any component on the drive.

Written By: Christopher Chiechi



## INTRODUCTION

If your Portable Coby CD Player (model number CX-CD241) is not reading the disc properly, use this guide to locate and remove the drive for repairs or replacement.

Several important components are located on the drive, such as the motor and the laser. Any faulty component on the drive will cause the CD to not be properly read.

Before using this guide, troubleshoot your CD player using the [manual](#). You should try simple fixes, such as turning the CD player off and on or cleaning the device. If your CD player requires a replacement component in the drive, continue to follow this guide.

This guide will require a Phillips #0 screwdriver and a flat-head screwdriver (or a tool that can be used as a wedge to pry something open). There are 5 50mm Philips screws ([Step #2](#)) and 4 10mm Philips screws ([Step #6](#)).

Before beginning the teardown, turn the device off, unplug it from power, and remove the batteries. This will reduce the risk of electrical shock.



### TOOLS:

- [Phillips #0 Screwdriver](#) (1)
- [Flathead Screwdriver](#) (1)

*Used as a wedge.*

---

## Step 1 — Drive



- Turn the device off.
- Unplug the device and remove the batteries.

## Step 2



- Remove the three Phillips #0 screws from under the handle.
- Remove the two Phillips #0 screws from inside the disc tray.

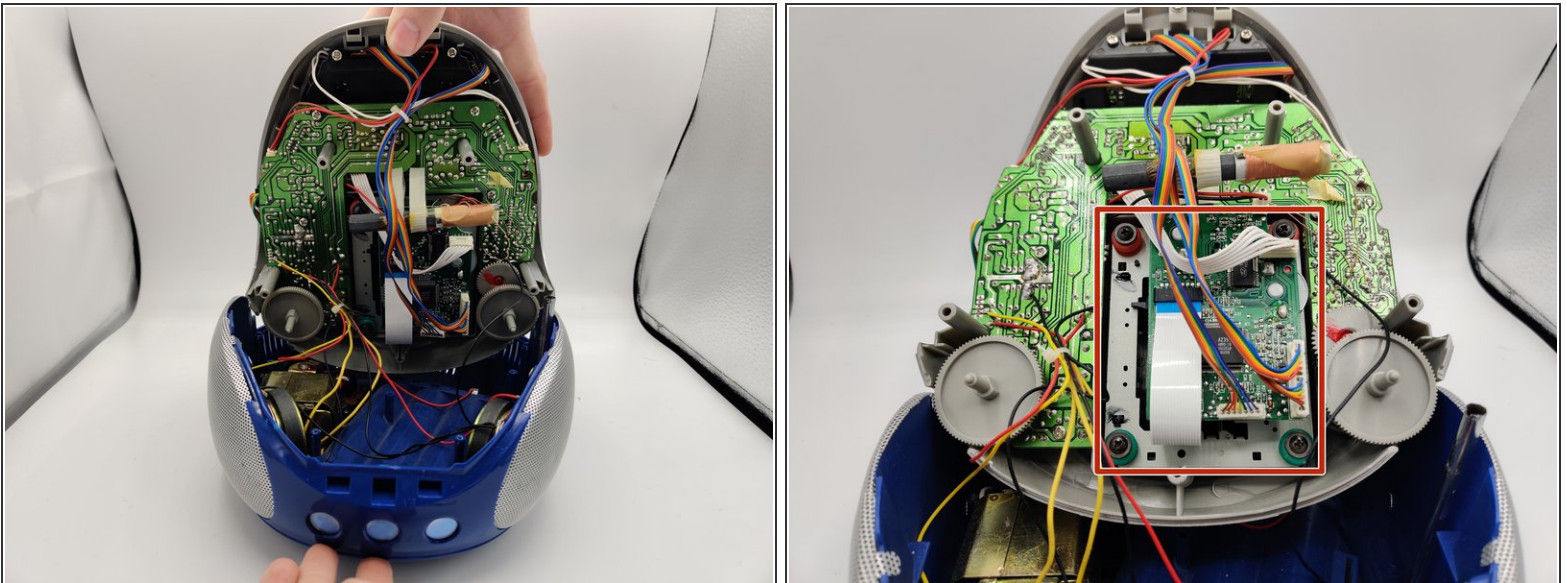


### Step 3



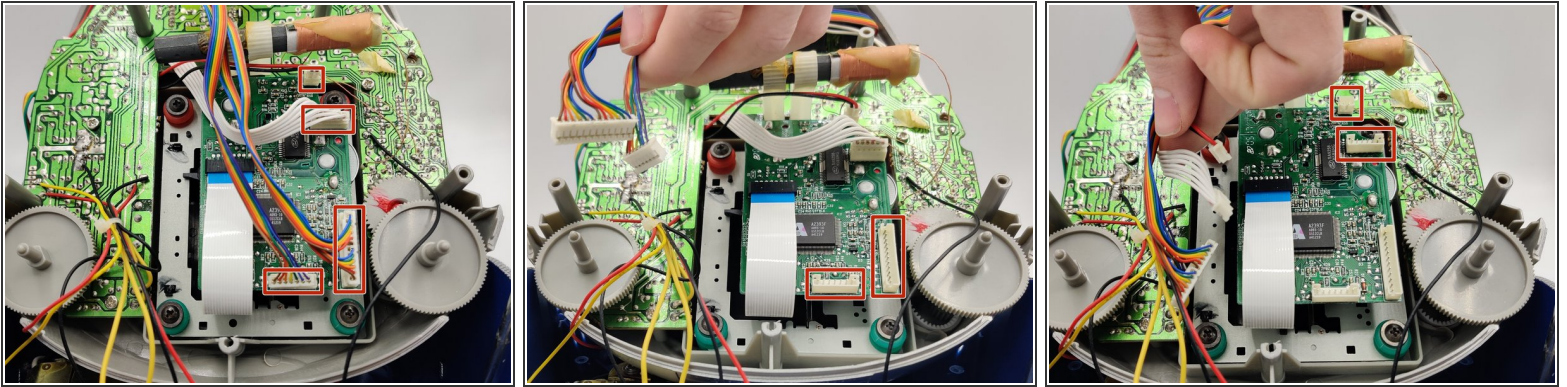
- Pry open the top portion of the case using a spudger.

### Step 4



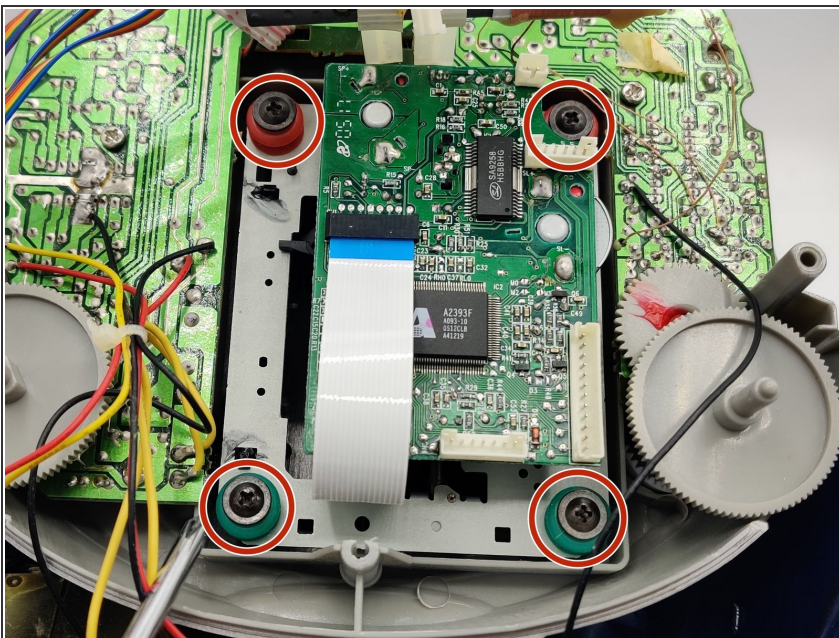
- Lean the top portion of the case back.
- Locate the drive.

## Step 5



- Disconnect the four wires.

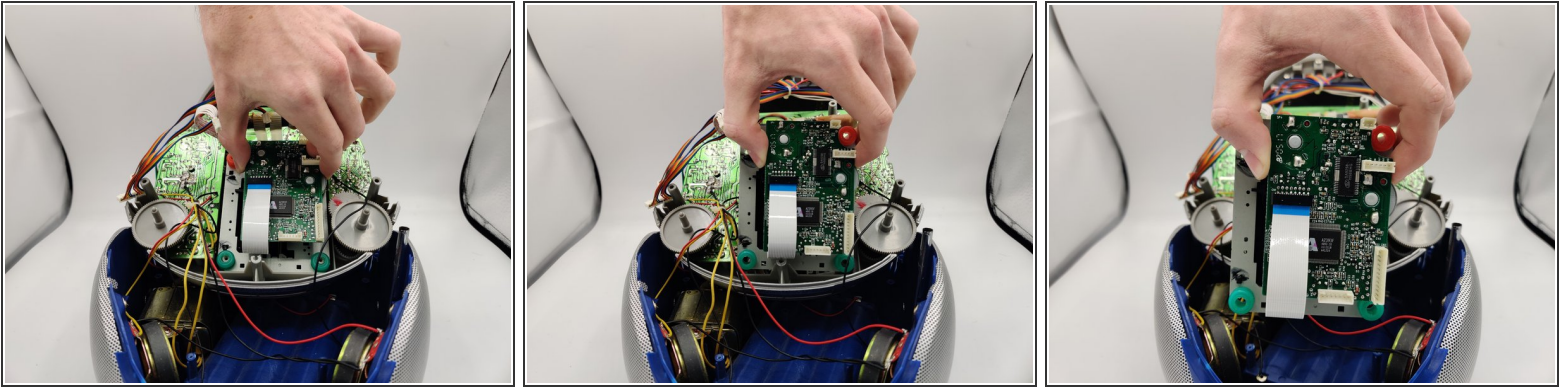
## Step 6



- Remove the four Phillips #0 screws on the red and green washers.



## Step 7



- Remove the drive.

⚠ Avoid hitting the metal bar above it.

To reassemble your device, follow these instructions in reverse order.