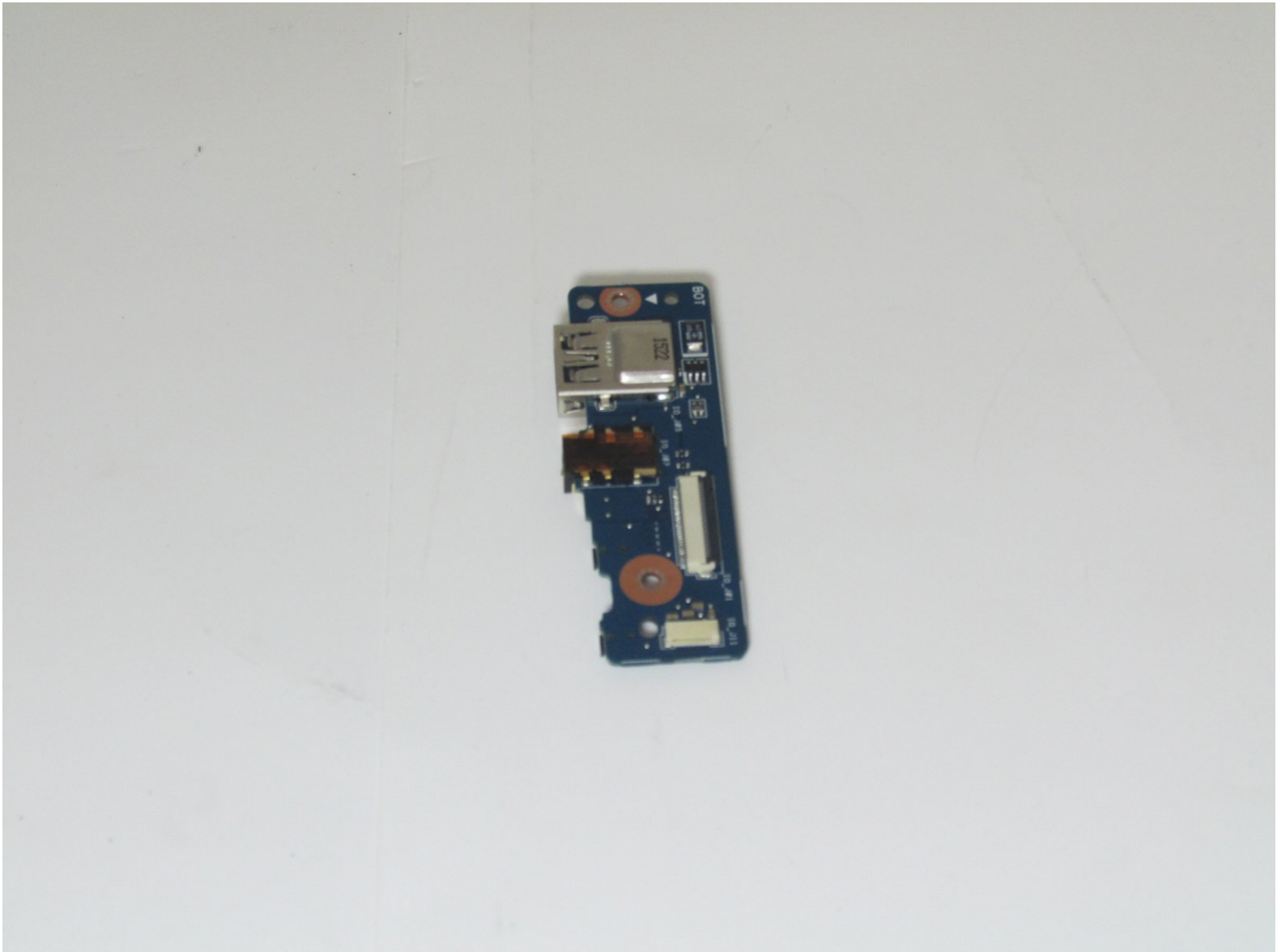




Toshiba Satellite L15W-B1208X Sound Board Replacement

How to replace/remove the soundboard in a Toshiba Satellite L15W-B1208X.

Written By: Brian Herbster



INTRODUCTION

This guide demonstrates how to remove a Toshiba Satellite L15W-B1208X sound card. Reasons you might want to replace your sound card is if your speakers or headphones don't work, or if your USB ports are unable to connect.



TOOLS:

- [Phillips #1 Screwdriver](#) (1)
 - [iFixit Opening Picks set of 6](#) (1)
 - [iFixit Opening Tools](#) (1)
 - [Magnetic Project Mat](#) (1)
 - [ESD Safe Tweezers Blunt Nose](#) (1)
-

Step 1 — Battery



⚠ Turn off your laptop before starting.

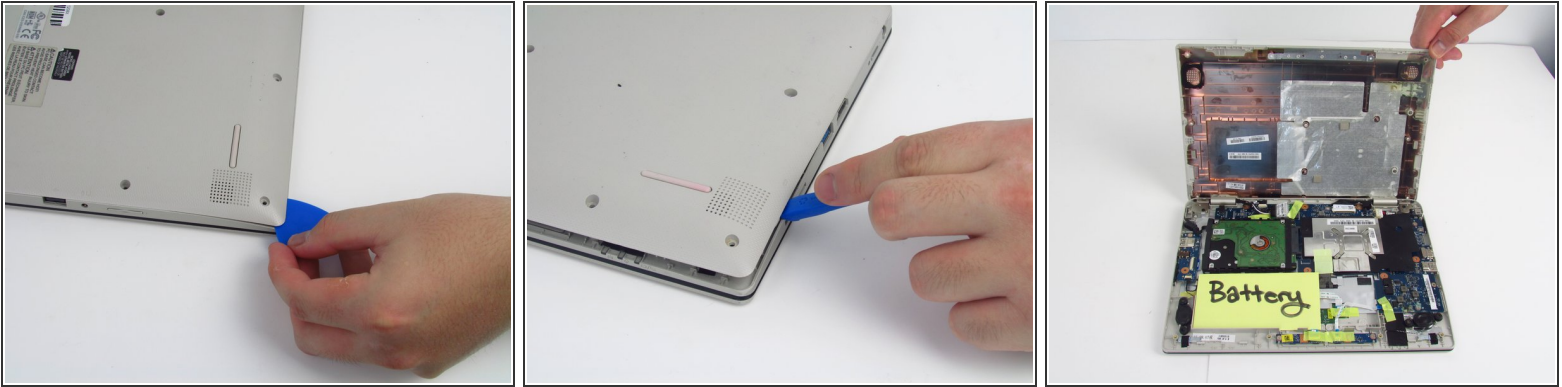
- Flip the laptop over so that the model number stickers face the ceiling.

Step 2



- Use a Phillips #1 screwdriver (PH1 bit) to remove the ten 5mm screws that secure the bottom cover.

Step 3



- Use an opening pick by sliding it in the seam between the bottom casing and the main body of the laptop. Separate the bottom casing from the main body.
- ⓘ It is recommended that you start on a corner and work your way along the edge of the cover.
- Use a plastic opening tool to separate the remainder of the back cover from the laptop.
- ⚠ Be careful not to bend or crack the plastic back cover.

Step 4



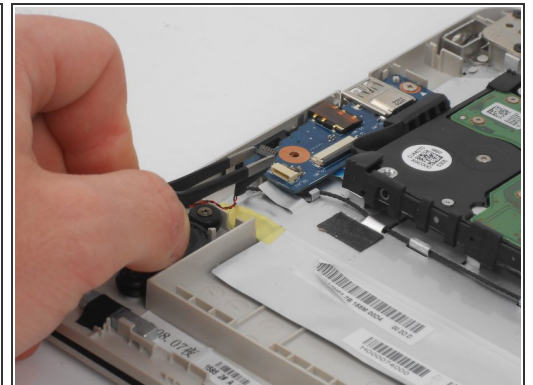
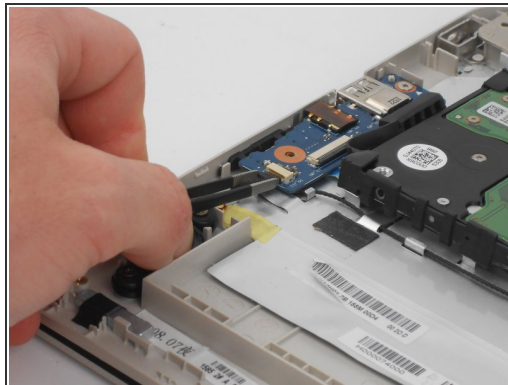
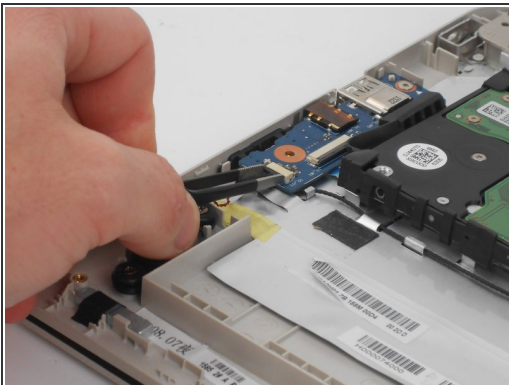
- Disconnect the battery from the motherboard by gently pulling on wiring connecting to the motherboard.
- Carefully lift the battery out of the laptop.

Step 5 — Sound Board



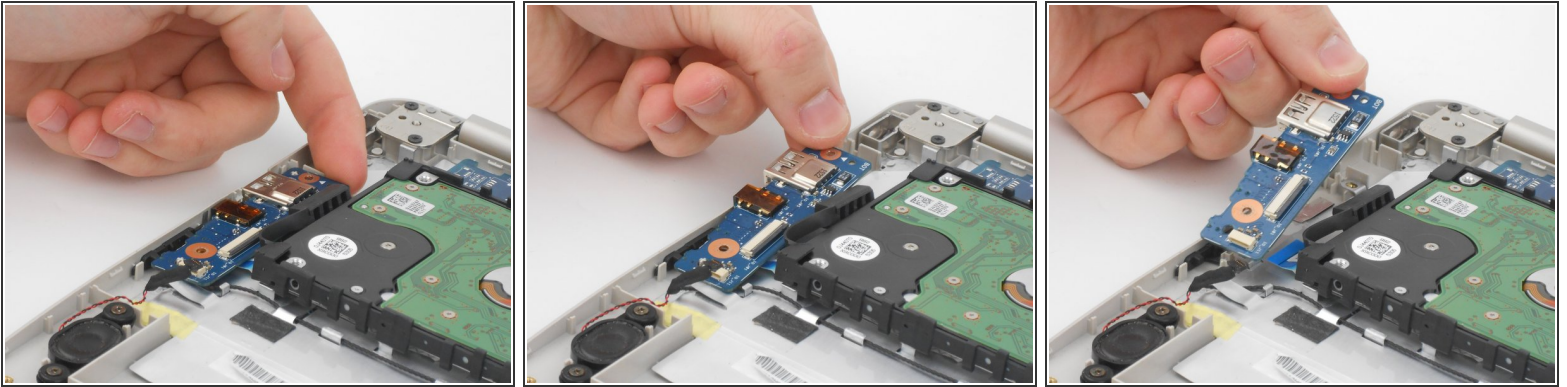
- Use Phillips #1 screwdriver (PH1 bit) to remove the 2mm screw that secures the sound board.

Step 6



- Using the ESD Safe Tweezers Blunt Nose gently pull on the plastic connector that attaches the speaker wiring to the soundboard to disconnect the soundboard from the laptop.
- Gently pull the wire away from the soundboard using the ESD Safe Tweezers Blunt Nose.

Step 7



- Gently lift the soundboard out of the laptop.

To reassemble your device, follow these instructions in reverse order.