



Toshiba Satellite L15W-B1208X Motherboard Replacement

How to replace/remove the motherboard in a Toshiba Satellite L15W-B1208X.

Written By: Kaylie Smith



INTRODUCTION

This guide demonstrates how to remove a Toshiba Satellite L15W-B1208X motherboard. Reasons the motherboard might need replacing include serious operating system problems, corrosion, or problems other component replacements haven't fixed. If the motherboard has corrosion or is damaged, be sure to wear proper hand protection, such as rubber gloves. After the motherboard is removed, take it to the nearest recycling center that accepts computer components for proper disposal.

TOOLS:

- [Phillips #1 Screwdriver](#) (1)
 - [iFixit Opening Picks set of 6](#) (1)
 - [iFixit Opening Tools](#) (1)
 - [Magnetic Project Mat](#) (1)
-

Step 1 — Battery



 Turn off your laptop before starting.

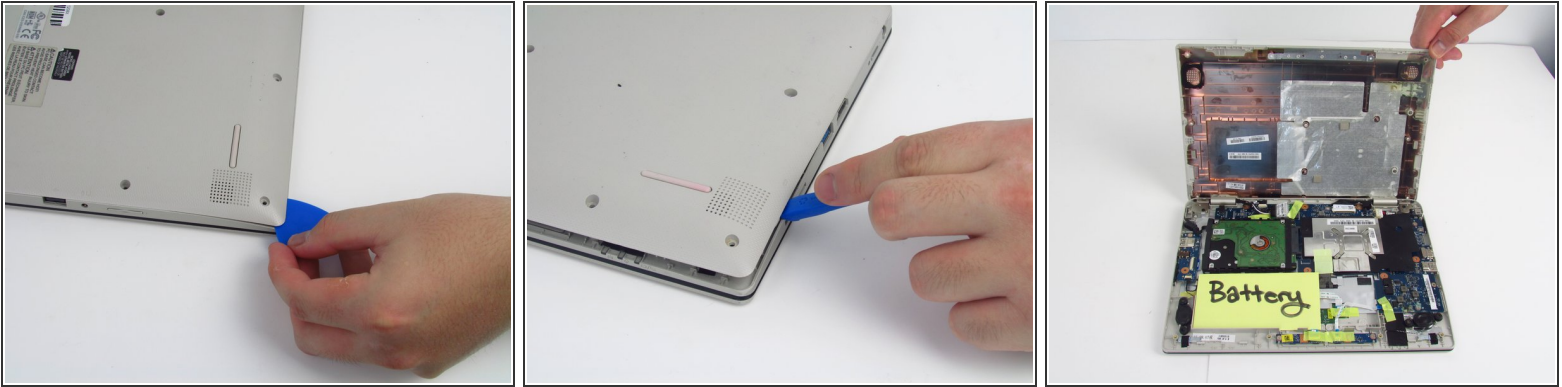
- Flip the laptop over so that the model number stickers face the ceiling.

Step 2



- Use a Phillips #1 screwdriver (PH1 bit) to remove the ten 5mm screws that secure the bottom cover.

Step 3



- Use an opening pick by sliding it in the seam between the bottom casing and the main body of the laptop. Separate the bottom casing from the main body.
- ❗ It is recommended that you start on a corner and work your way along the edge of the cover.
- Use a plastic opening tool to separate the remainder of the back cover from the laptop.
- ⚠ Be careful not to bend or crack the plastic back cover.

Step 4



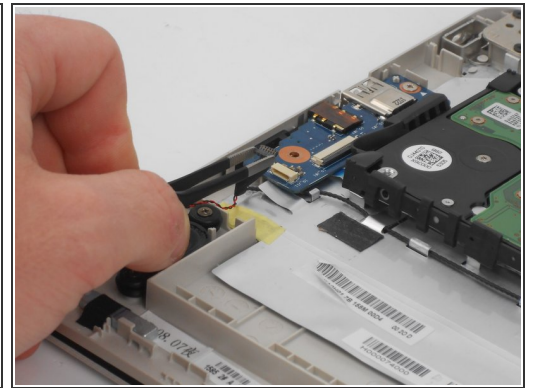
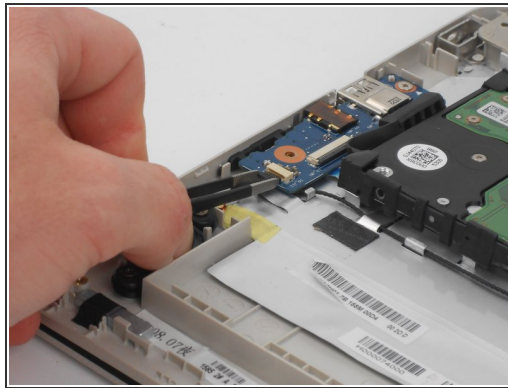
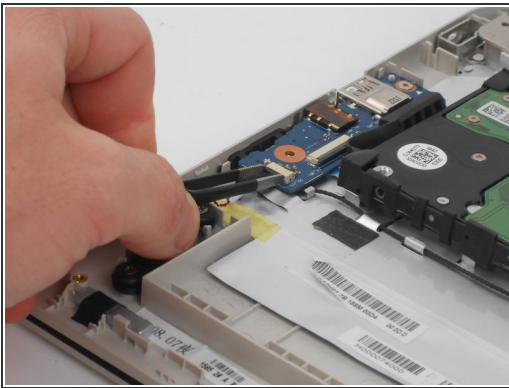
- Disconnect the battery from the motherboard by gently pulling on wiring connecting to the motherboard.
- Carefully lift the battery out of the laptop.

Step 5 — Sound Board



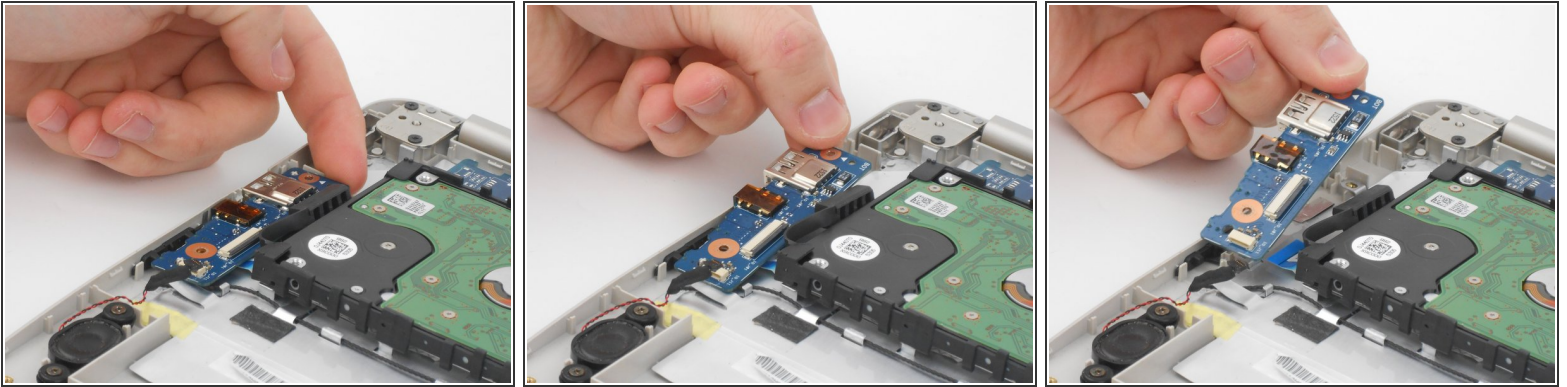
- Use Phillips #1 screwdriver (PH1 bit) to remove the 2mm screw that secures the sound board.

Step 6



- Using the ESD Safe Tweezers Blunt Nose gently pull on the plastic connector that attaches the speaker wiring to the soundboard to disconnect the soundboard from the laptop.
- Gently pull the wire away from the soundboard using the ESD Safe Tweezers Blunt Nose.

Step 7



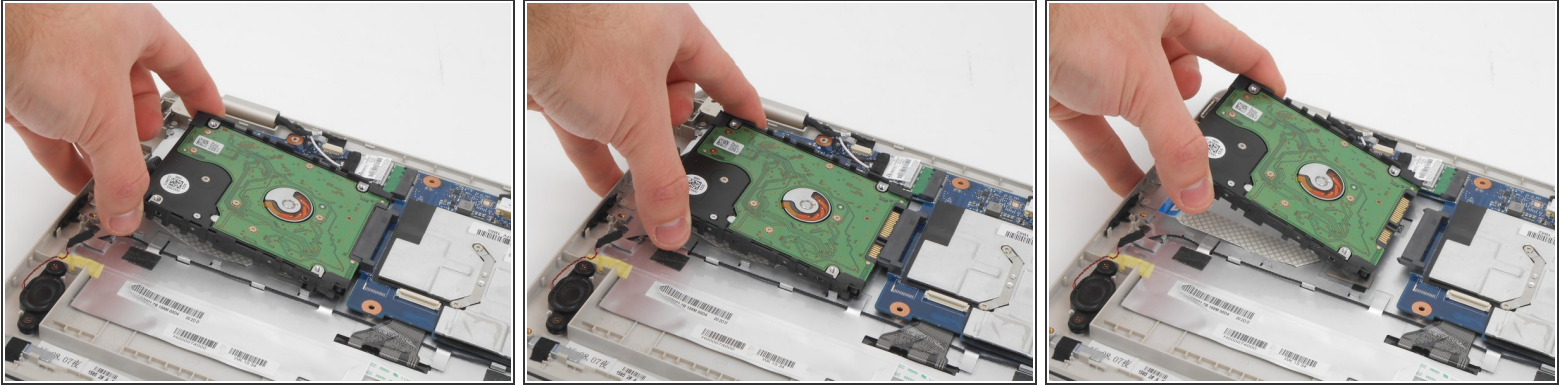
- Gently lift the soundboard out of the laptop.

Step 8 — Hard Drive



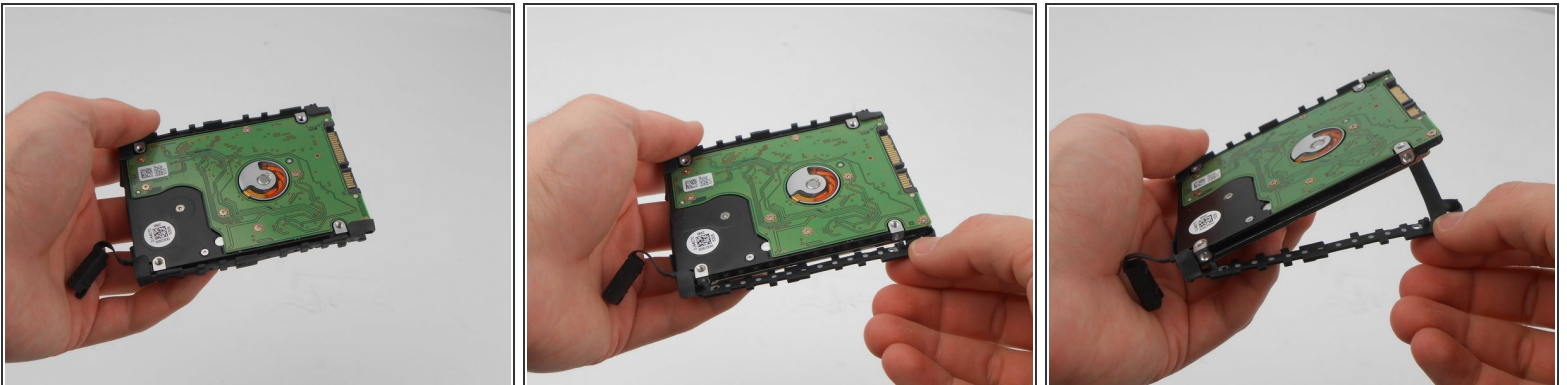
- Pull up on the ribbon beneath the hard drive to lift the hard drive upwards.

Step 9



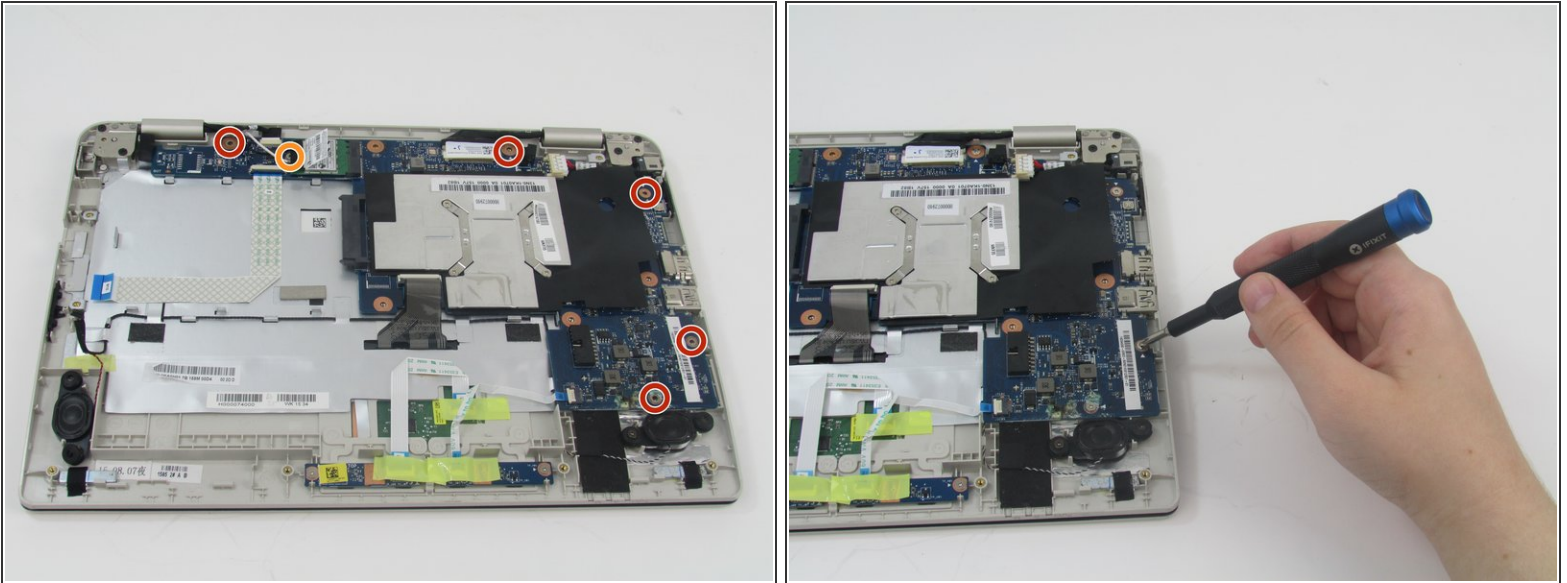
- Gently pull the hard drive towards the edge of the laptop to disconnect the hard drive from the laptop circuitry.

Step 10



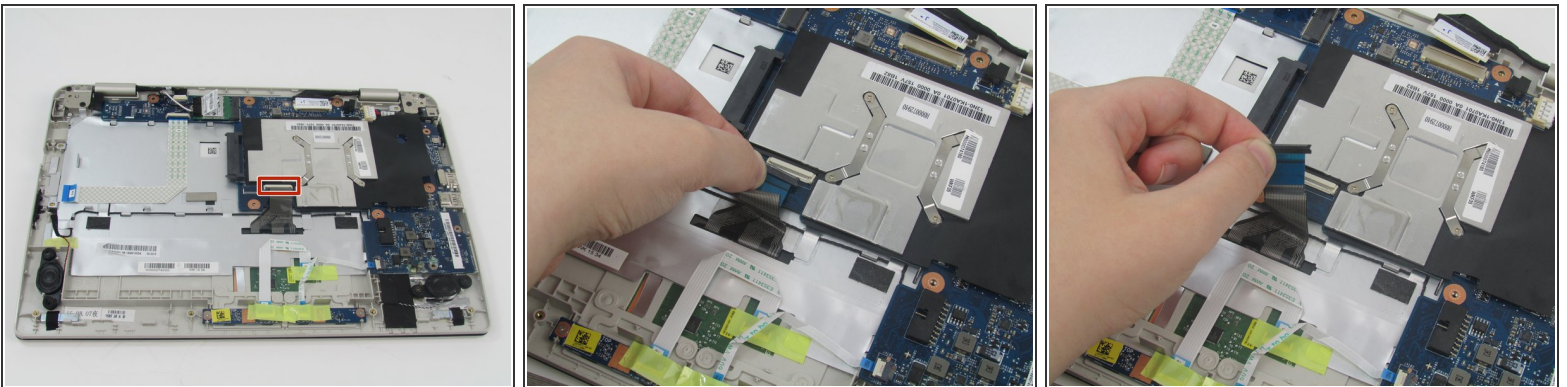
- Remove the hard drive from black rubber mount by pulling the corner of the rubber mount away from the hard drive.
- Continue pulling the rubber mount away from the hard drive until all four corners have been taken off.
- Pull the remainder of the rubber mount away from the hard drive.

Step 11 — Motherboard



- Remove the six 2 mm marked screws with a Phillips #1 screwdriver (PH1 bit).
- The orange marked screw is wedged underneath the Wifi card, so be careful not to damage it when removing the screw.

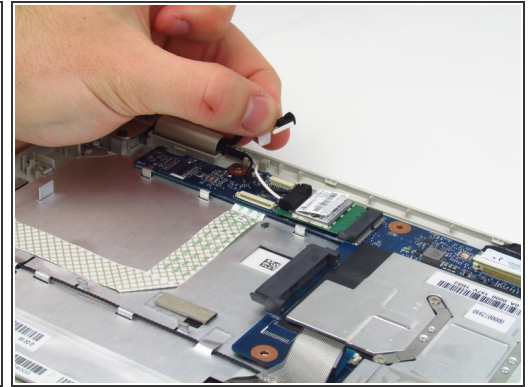
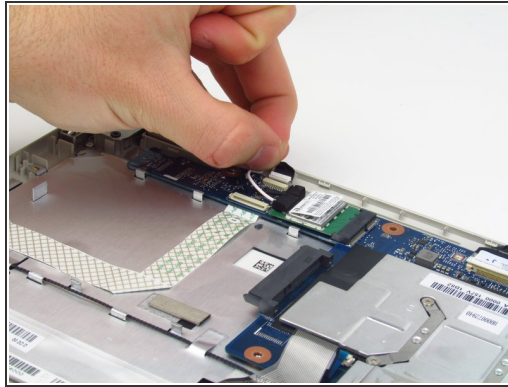
Step 12



- Carefully remove the blue ribbon cable attached to the silver plate on the motherboard using your fingernails to gently pull on the tabbed insert, and place it out of the way.

⚠ The connectors on these cables can easily snap off, so make sure you handle them with care.

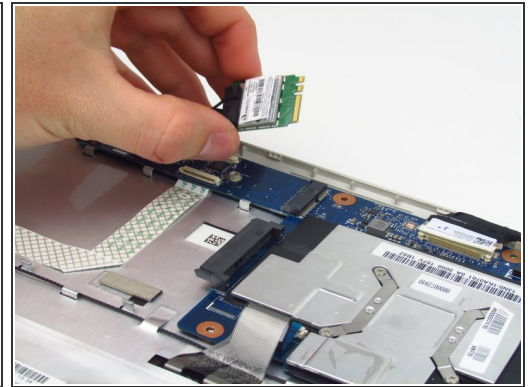
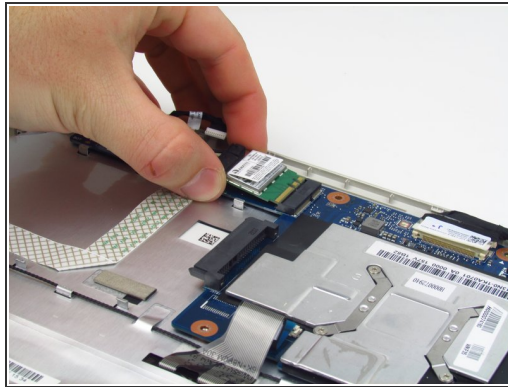
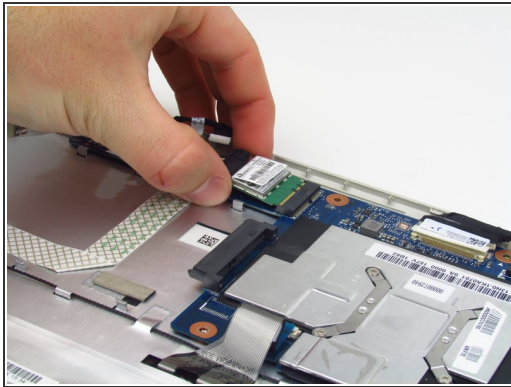
Step 13



- Gently remove the insert next to the wi-fi card on the motherboard. Use your fingernails to gently pull on the tabbed insert, and place it out of the way.

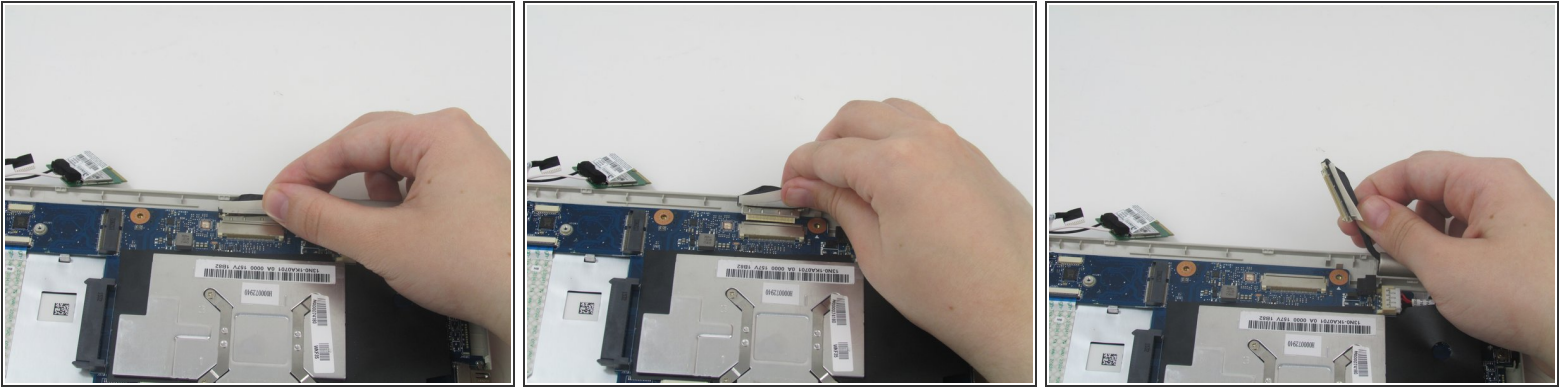
⚠ The connectors on these cables can easily snap off, so make sure you handle them with care.

Step 14



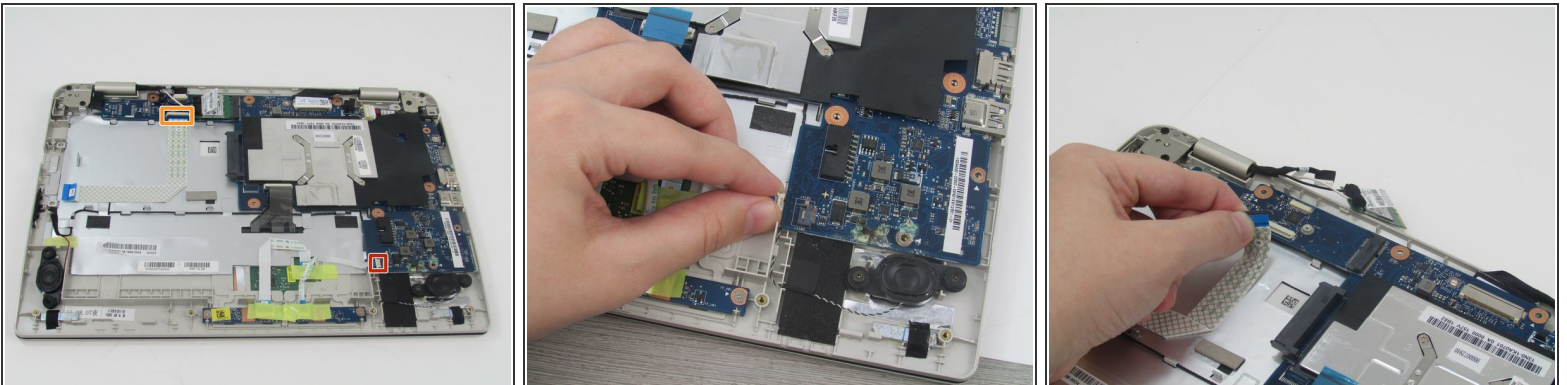
- Pull on the sides of the WiFi card to remove it from its slot on the motherboard. Lift the card out and up away from the motherboard, as it will try to bend back into the casing.

Step 15



- Grab the paper tab on the cable near the silver part of the motherboard. Gently pull it away from the slot, and place it out of the way.

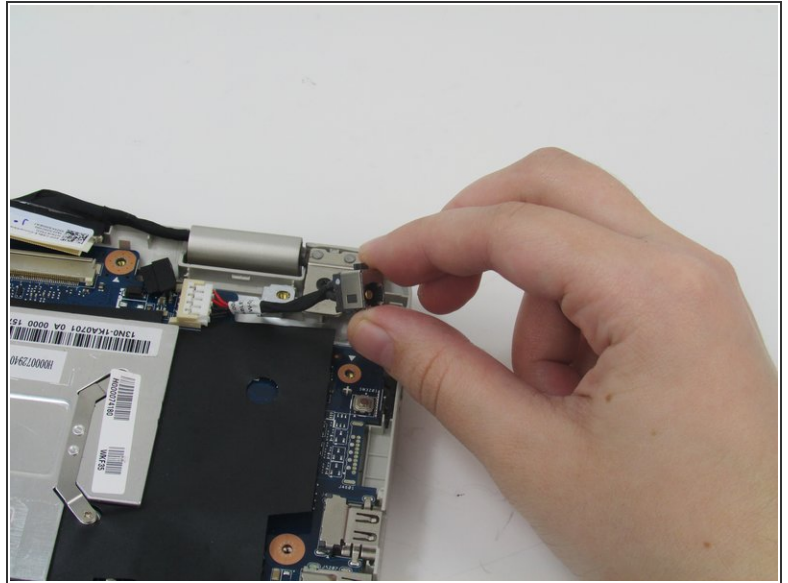
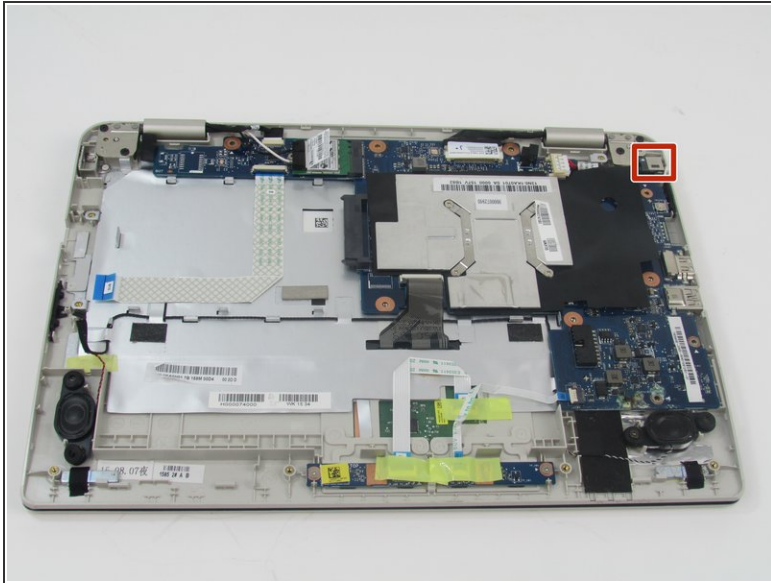
Step 16



 These next two cables are the most delicate. Be cautious while removing them.

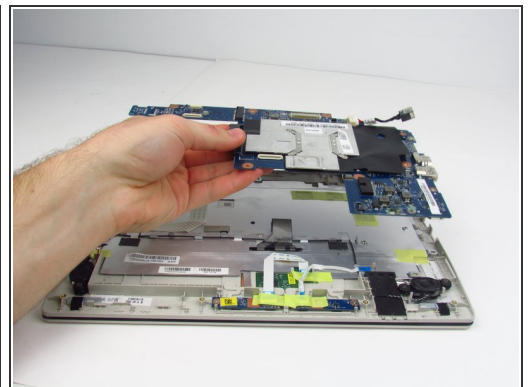
- Use your fingernails to gently pull on the tabbed insert of the cable near the bottom of the motherboard, and place it out of the way.
- Gently pull on the ribbon attached to the motherboard near the WiFi card. In needed, use your fingernails to carefully nudge the tab out of its slot.

Step 17



- Gently nudge the headphone jack out of the casing, making sure not to break the plastic.

Step 18



- To remove the motherboard from the casing, gently lift the left side and pull it out of the casing.

To reassemble your device, follow these instructions in reverse order.