



Motorola Moto G6 SIM Card Tray Replacement

How to remove or replace the SIM card tray in a Motorola Moto G6.

Written By: Tarun Thiruma



INTRODUCTION

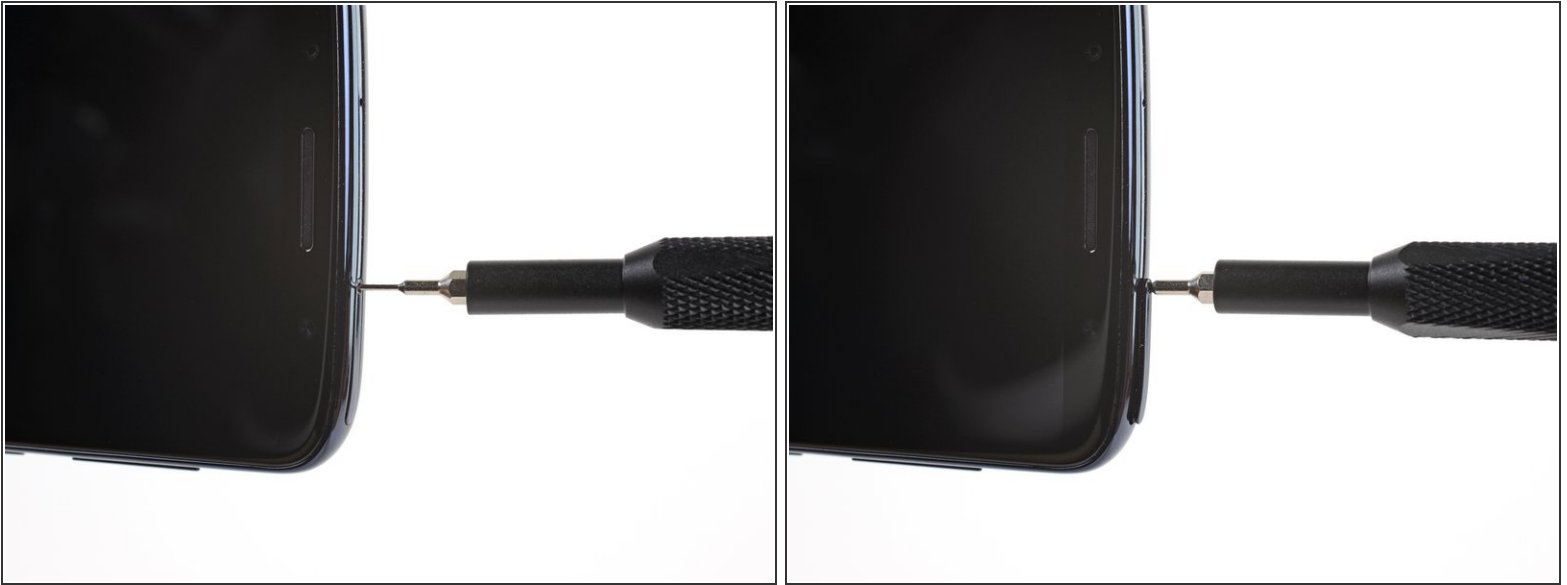
Use this guide to remove the SIM card tray in your Motorola G6.



TOOLS:

- [SIM Card Eject Tool](#) (1)
-

Step 1 — Remove the SIM Card Tray



- Insert a paperclip or SIM card eject tool into the small hole in the SIM card tray on the right side of the top edge of the phone.
- Press the tool into the hole to eject the tray.
- ⓘ This may require a significant amount of force.
- ⓘ The ejection mechanism is deeper in this phone than others and may require a longer SIM card eject tool. If your tool isn't long enough to reach the mechanism, try using an unfolded paperclip instead.

Step 2



- Remove the SIM card tray.
- ★ When reinserting the SIM card, ensure that it is in the proper orientation relative to the tray.

To reassemble your device, follow the above steps in reverse order.

Take your e-waste to an [R2 or e-Stewards certified recycler](#).

Repair didn't go as planned? Try some [basic troubleshooting](#), or ask our [Motorola Moto G6 Answers community](#) for help.