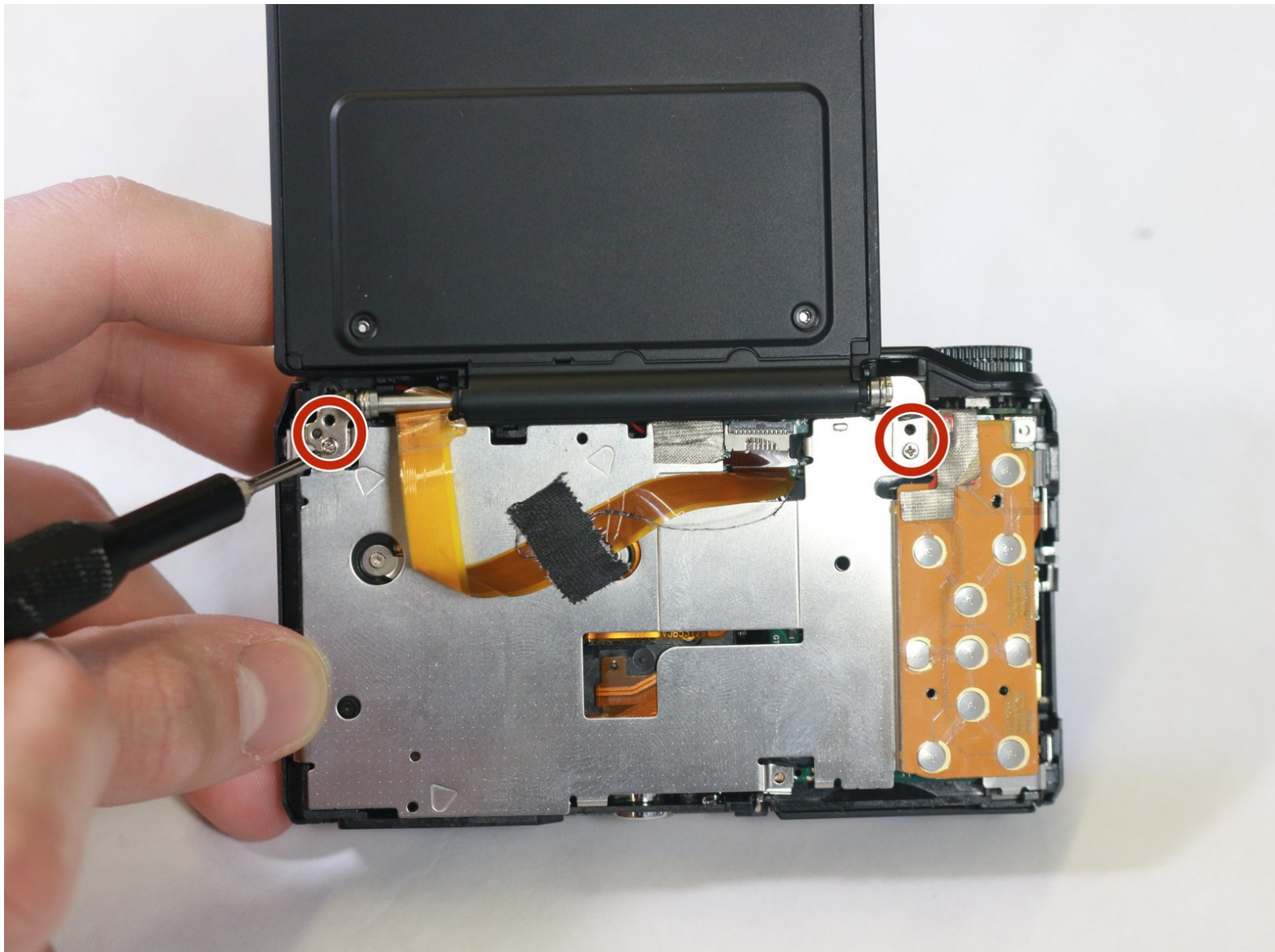




Panasonic Lumix DMC-ZS35 LCD Screen Replacement

A guide on how to remove/replace the screen of the Panasonic Lumix DMC-ZS35 LCD camera.

Written By: Rachel Hughes



INTRODUCTION

In case your LCD screen is unresponsive, cracked, or otherwise damaged/broken, you can follow this guide to remove or replace it with a functioning LCD screen of the same model.

Before you replace your LCD screen, take a look at this [Troubleshooting Guide](#) to see if there is a simpler solution to your problem. Before you begin, make sure to turn the camera off and remove the battery.



TOOLS:

- [Phillips #000 Screwdriver](#) (1)
 - [iFixit Opening Tools](#) (1)
-

Step 1 — Back Casing



- Remove the six 4mm screws located on the side and bottom of the camera casing using a Phillips #000 screwdriver.

Step 2



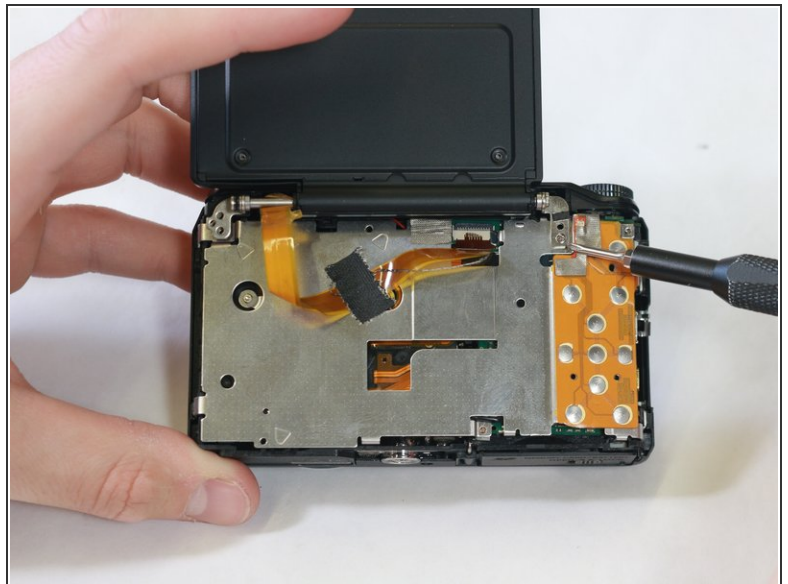
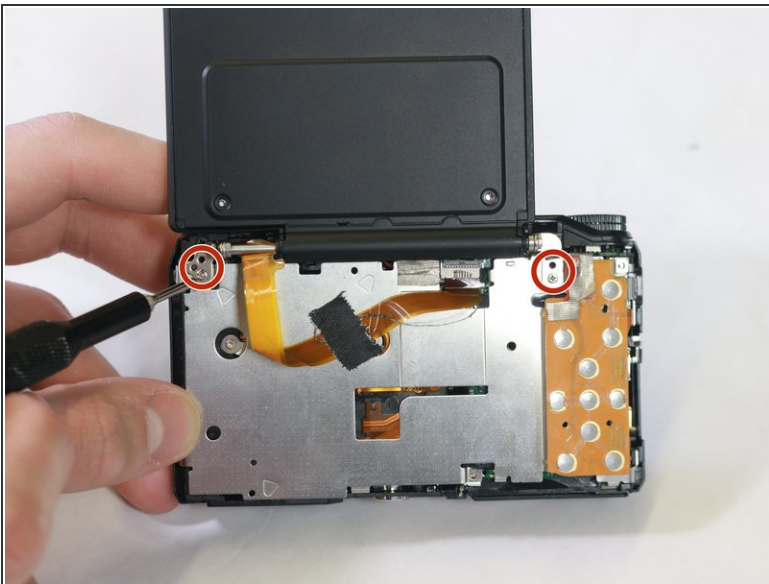
- Use a plastic opening tool to carefully separate the back casing from the main body of the camera. It's advised to run along the entire "seam" of the casing and the camera with the tool to ensure full separation.

Step 3



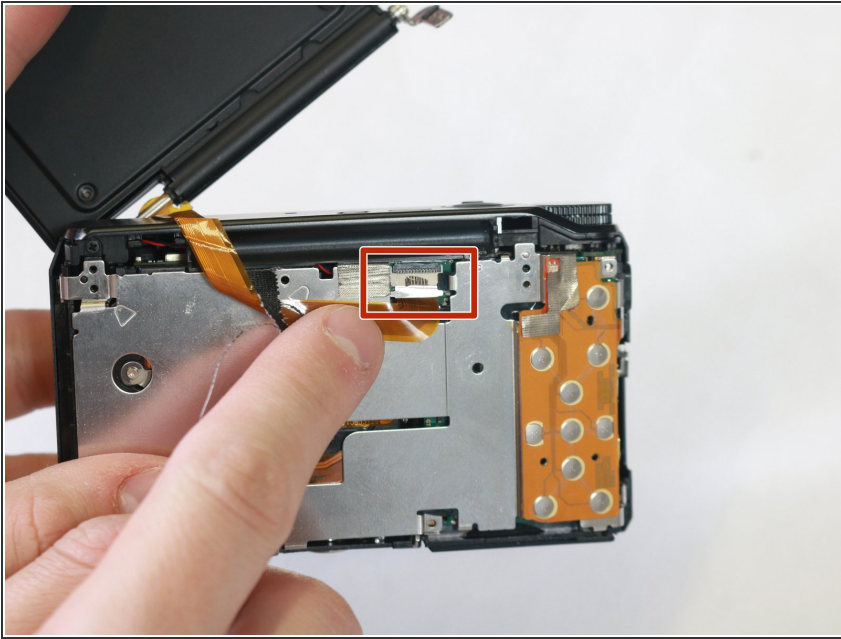
- Gently pry apart the back casing from the body of the camera. It's recommended to apply as minimal force as is necessary to prevent unintended damage to the camera or the casing.

Step 4 — Screen



- Unscrew the four 3mm screws holding the LCD screen hinge in place using a Phillips #000 screwdriver.

Step 5



- Gently pull LCD screen ribbon cable from internal port to disconnect the screen and prevent unwanted damage.
- Lift the freed LCD screen from the base camera to complete the process.

To reassemble your device, follow these instructions in reverse order.