



Sony BDP-s7200 Front Panel Cover Replacement

This guide will help you to replace the front cover of the Sony BDP-s7200

Written By: Mitchell Novak

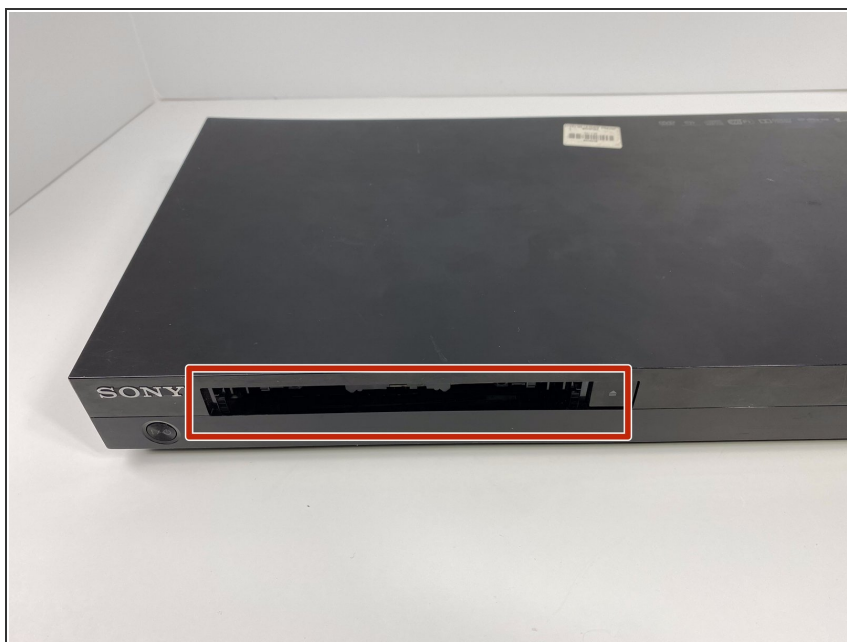




TOOLS:

- [Phillips #2 Screwdriver](#) (1)
- [iFixit Opening Picks set of 6](#) (4)
- [iFixit Opening Tools](#) (1)

Step 1 — Back Cover



- Remove the disk tray cover from the device.

Step 2



- Using the Phillips #2 Screwdriver, remove the five 9mm from the bottom of the device.
- Remove the metal cover.

Step 3



- Using the Phillips #2 Screwdriver, remove the six 9mm screws from the back of the device.

Step 4



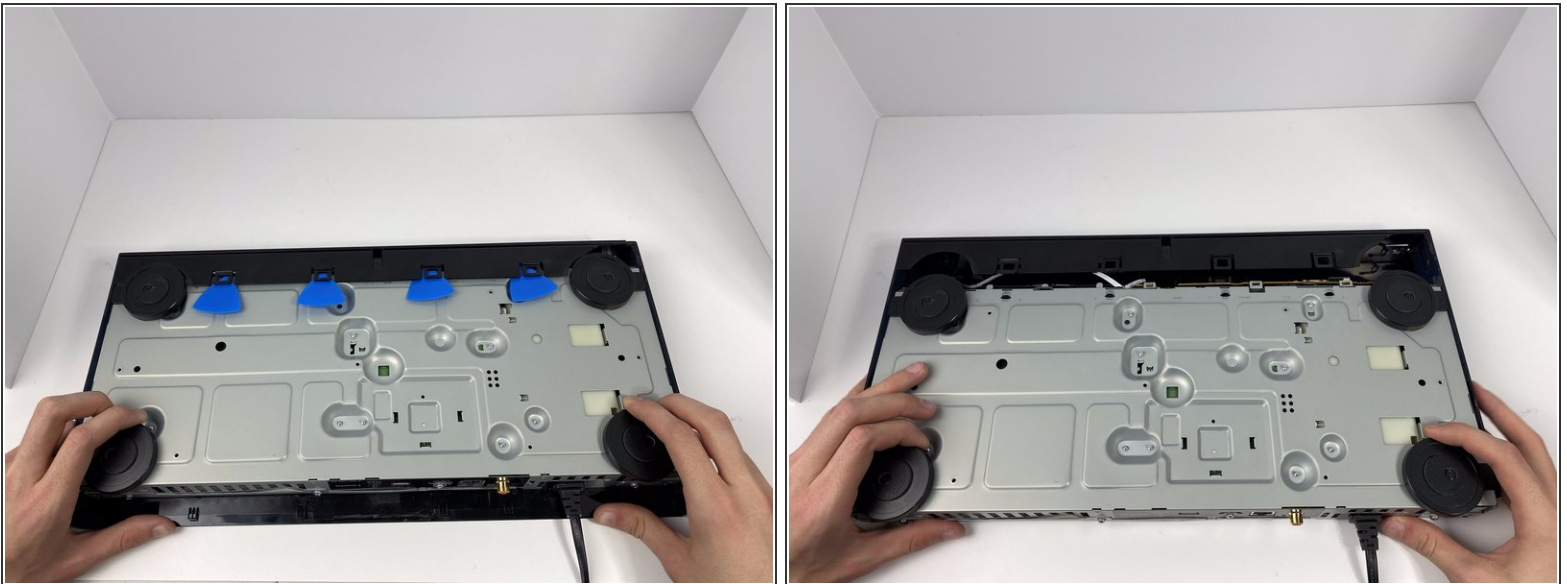
- Pull off the back panel and remove it from the device.

Step 5 — Front Panel Cover



- Using the plastic opening tool, open one of the tabs on the bottom of the device.
- While keeping the tab open, insert a opening pick in between the opening tool and tab.
- Repeat this for the 3 other tabs.

Step 6



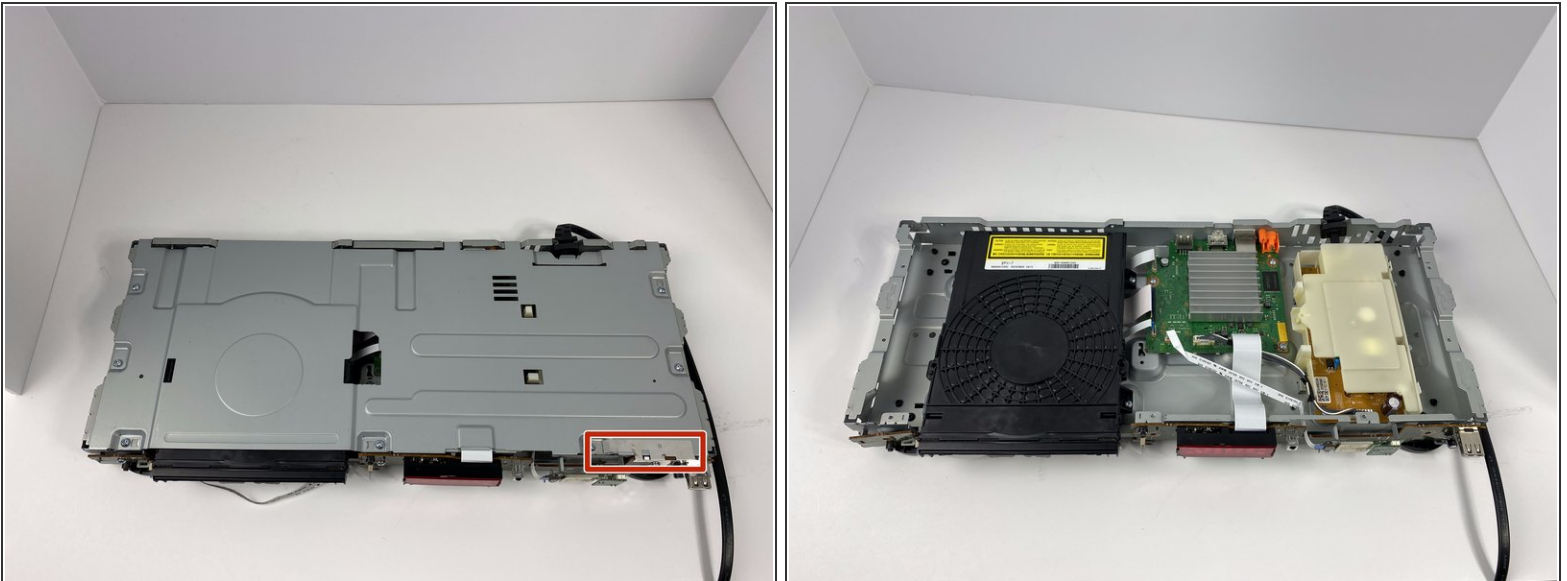
- Place your hands on the two black circles on the bottom of the device.
- Pull on the black circles to remove the device from its front panel cover.

Step 7



- Using the Phillips #2 Screwdriver, remove the seven 9mm screws from the top of the device.
- Using the same screwdriver, remove the three 9mm screws from the back of the device.
- Using the same screwdriver, remove the one 9mm screw still connecting the small metal clip to the front of the device.

Step 8



- Remove the small metal clip on the front of the device.
- Remove the metal cover on the top of the device.

To reassemble your device, follow these instructions in reverse order.