



Sony Xperia Z5 Compact Motherboard Replacement

This guide will show you how to replace the motherboard of the Sony Xperia Z5 Compact

Written By: Grant Conner



INTRODUCTION

The motherboard is the central hub of communication between all of the components in the device. If one or more components are failing in your device, you should consider replacing the motherboard. Use this guide to replace the motherboard in your device.



TOOLS:

- [Metal Spudger](#) (1)
- [Tweezers](#) (1)
- [Heavy-Duty Suction Cups \(Pair\)](#) (1)
- [Heat Gun](#) (1)
- [Suction Handle](#) (1)
- [iFixit Opening Picks set of 6](#) (1)
- [Phillips #000 Screwdriver](#) (1)
- [Tweezers](#) (1)
- [Spudger](#) (1)



PARTS:

- [Sony Xperia Z5 Compact Charging Assembly](#) (1)
- [Sony Xperia Z5 Compact Replacement Battery](#) (1)
- [Sony Xperia Z5 Compact Back Cover Adhesive](#) (1)

Step 1 — Charging port flex



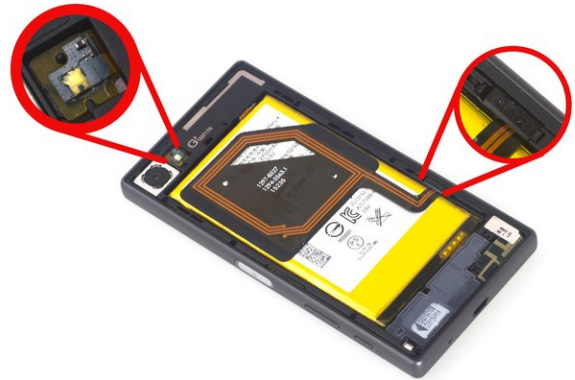
- Power off and remove SIM card tray.

Step 2



- Heat up the back cover to soften the adhesive.
- Place the suction cup to open a gap from top side, then insert guitar picks and slide it to cut the adhesive underneath.
- Remove back cover.

Step 3



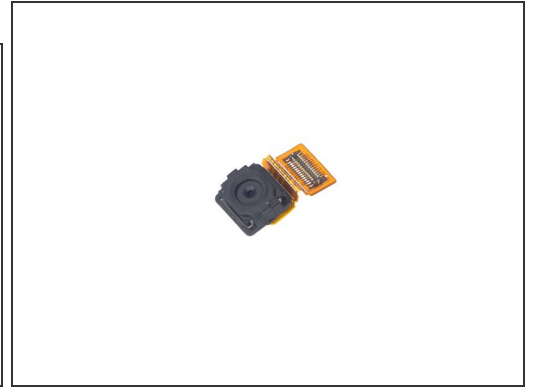
- Remove all 10 Phillips screws.
- Disconnect NFC clip and flashlight clip.

Step 4



- Remove the plastic bracket.
- Pry up and remove back frame.

Step 5



- Remove front camera.

Step 6



- Remove rear camera.

Step 7



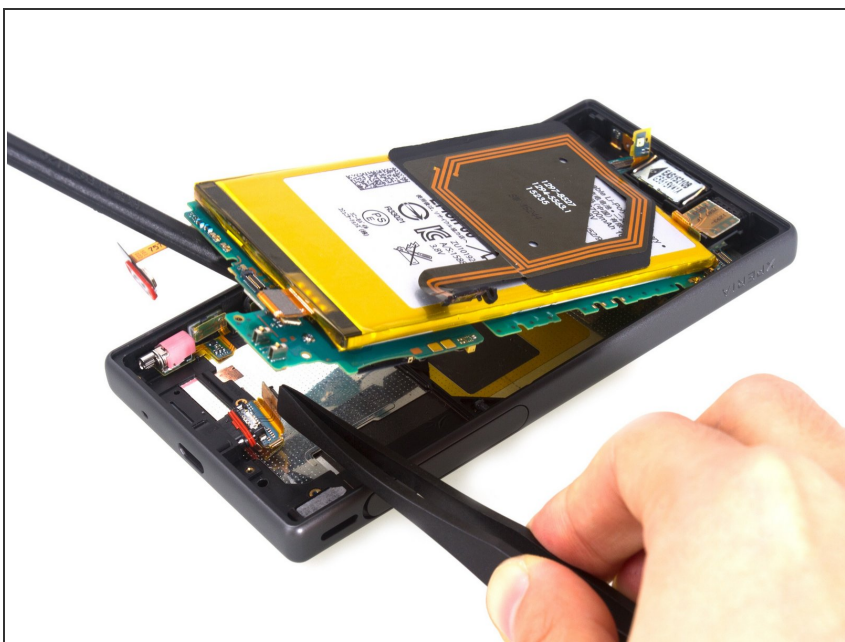
- Remove loudspeaker.

Step 8



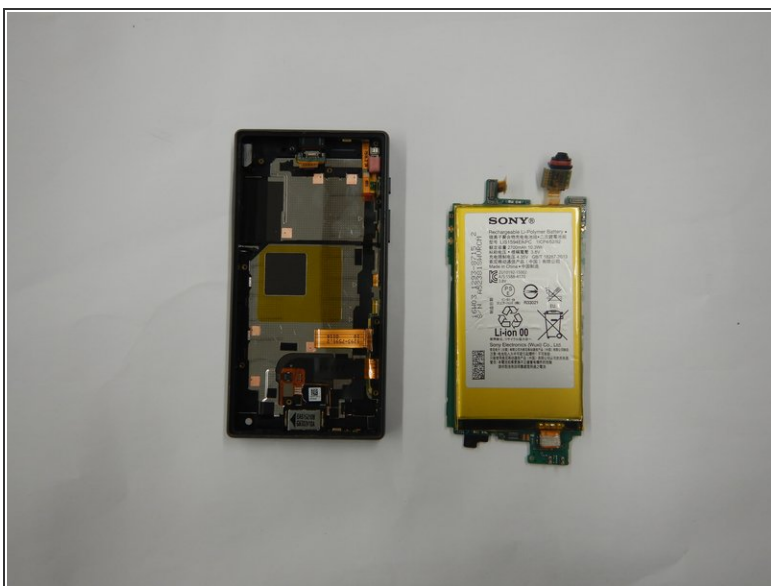
- Release charging port connector.
- Remove plastic protective bar.
- Pry up motherboard assembly from this side. There are three flex connectors connecting the motherboard underneath. So pry up the motherboard assembly gently.

Step 9



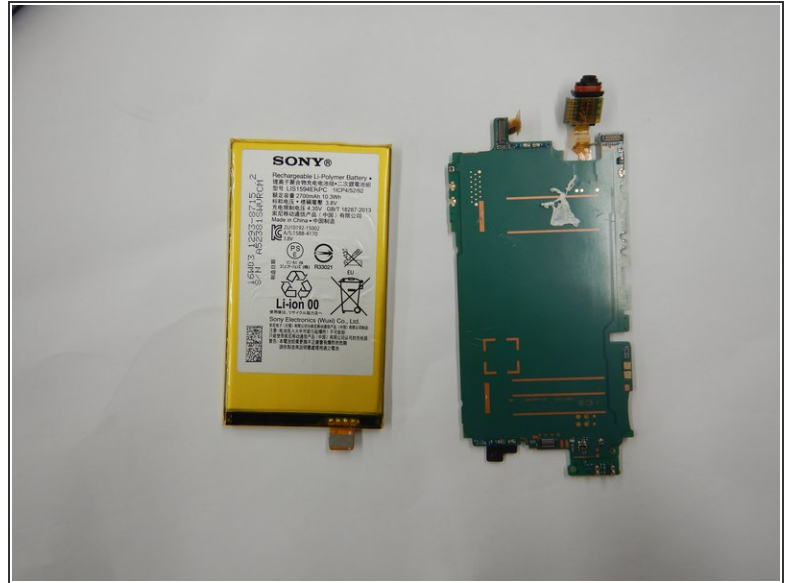
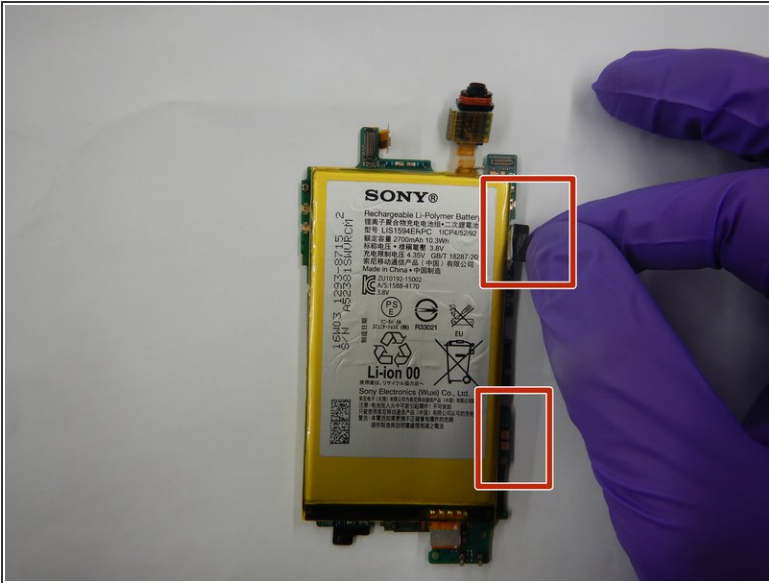
- Remove charging port flex.

Step 10 — Motherboard



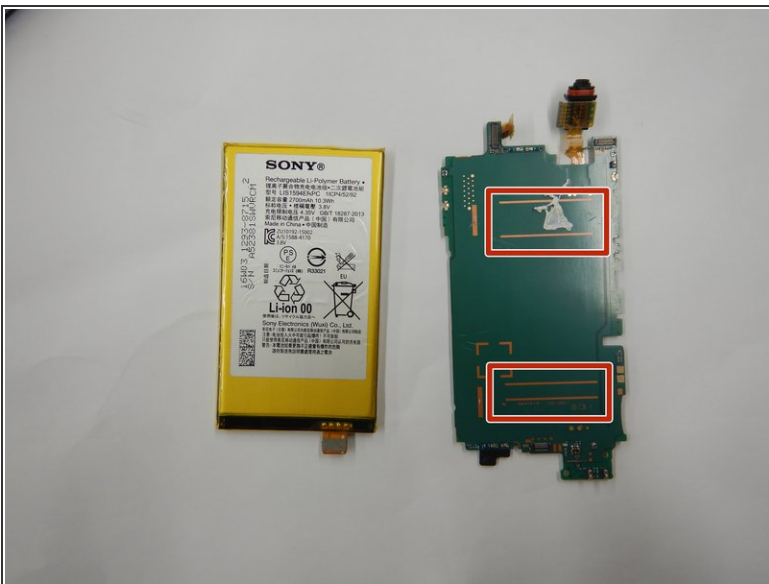
- Remove the motherboard/battery assembly.
- Using a spudger, release the battery connector from the motherboard.

Step 11



- Slowly pull out the two battery tapes located on the right side of the battery.
- Remove the battery from the motherboard.

Step 12



- Place two pieces of binding tape on the center of the motherboard.
- Reattach the battery to the motherboard.

To reassemble your device, follow these instructions in reverse order.