



# HP Chromebook 11 G5 Battery Replacement

This is a replacement guide for the HP...

Written By: Kunal Chopra



## INTRODUCTION

This is a replacement guide for the HP Chromebook 11 G5 battery. The main purpose of the steps below is to show you how to replace the internal battery. If these steps are followed carefully and correctly the battery should be replaced easily.



### TOOLS:

- [Metal Spudger](#) (1)
- [Spudger](#) (1)
- [Phillips #00 Screwdriver](#) (1)



### PARTS:

- [HP Chromebook 11 G5 Battery](#) (1)

## Step 1 — Keyboard



- Remove four large rubber pads from the bottom of the device to reveal screws using the pointed end of a spudger.

## Step 2



- Remove two smaller rubber pads from the bottom of the device to reveal screws using the pointed end of a spudger.



## Step 3



- Remove the 4mm eleven screws using a Phillips #00 screwdriver.

## Step 4



- Flip the device upright and open the screen as far back as possible.

## Step 5



- Wedge the flat-end of a metal spudger between the base of the device and the keyboard assembly while applying downward pressure. Slide the spudger across the entirety of the gap until the two components separate.

- ⓘ There will be audible popping sounds caused by the separation of the base of the device and the keyboard assembly as you wedge them apart.

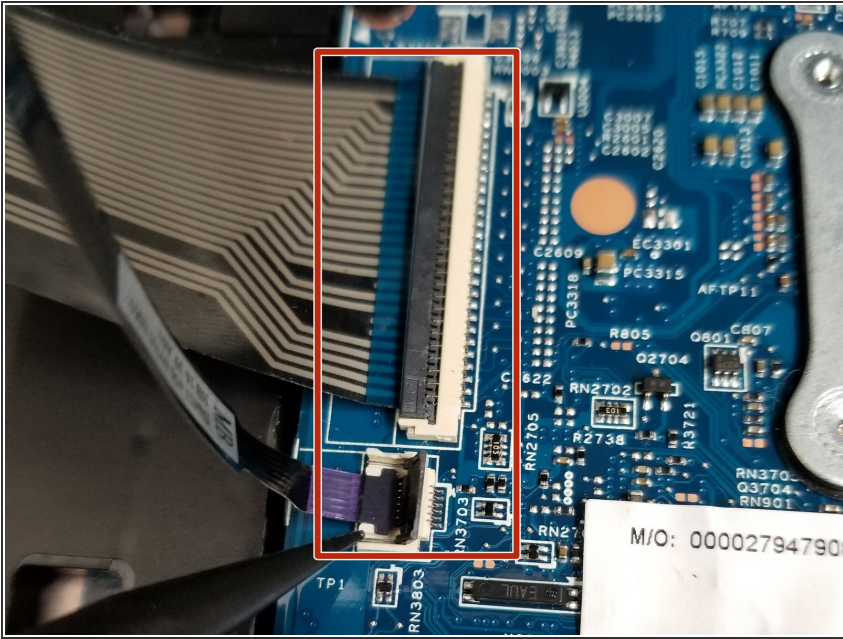
⚠ Do not insert the spudger into the gap deeper than necessary as it may snag on the internal components.

## Step 6



- Gently lift the keyboard assembly slightly above the base of the device.

## Step 7



- Disconnect the two ribbon cables connected to the motherboard by using the pointed end of a spudger to lift the plastic connector lids to allow the ribbon cables to be gently removed by hand.

## Step 8



- Gently remove the keyboard assembly by hand from the base of the device.

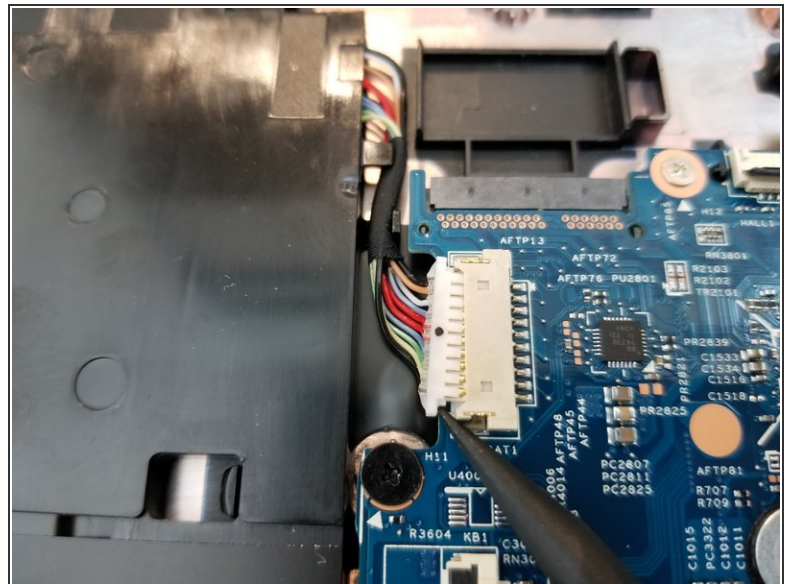
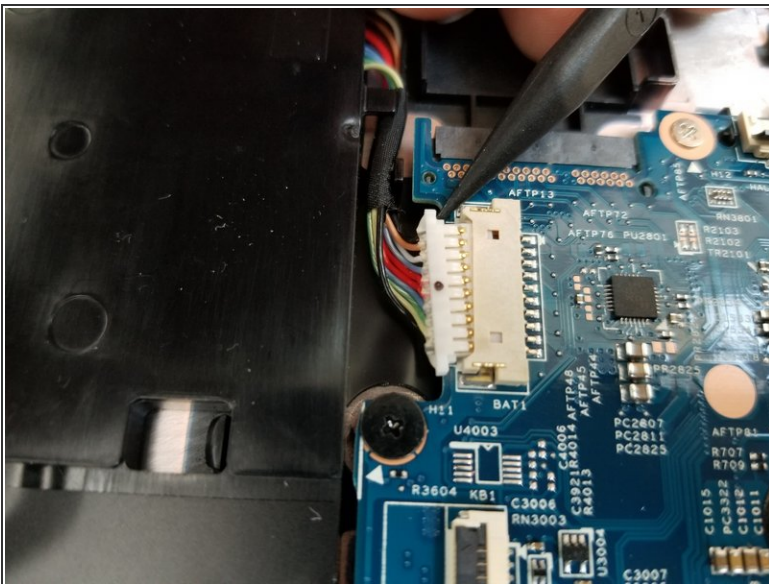


## Step 9 — Battery



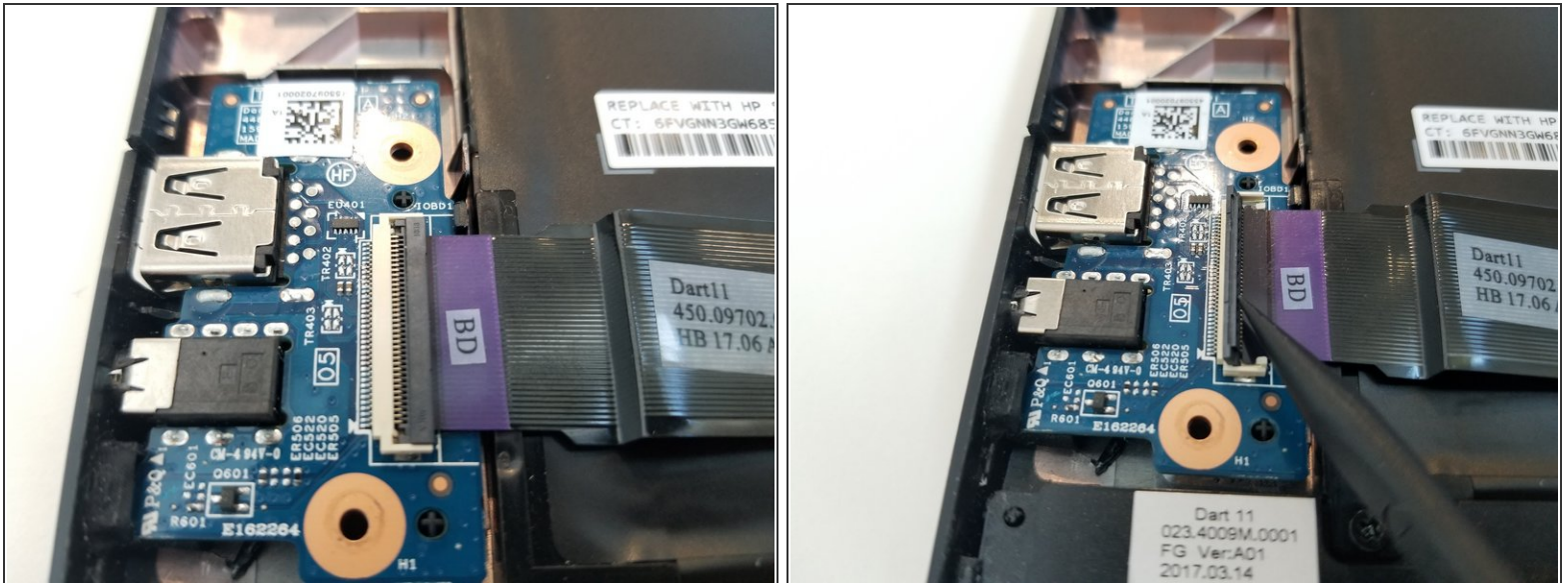
- Remove the two wires from the top of the WLAN module by pulling them gently with a spudger or your hand and snapping the wires out of place.

## Step 10



- Remove the battery connector by pushing both edges outward using the sharp end of the spudger.

## Step 11



- Remove the ribbon cable from the connector board by lifting the cover with the sharp end of the spudger and gently pulling the cable out with your hand.

**⚠️ Ribbon cables can be fragile and extra care must be taken when pulling the cable out of the connector.**

## Step 12



- Remove the two 3mm silver screws from the battery using a Phillips #00 screwdriver.
- Remove the black 4mm screw with the Phillips #00 screwdriver.
- Remove the battery by hand.

**⚠️ Be cautious when removing the battery as two WLAN cables run along the top edge of it.**



To reassemble your device, follow these instructions in reverse order.