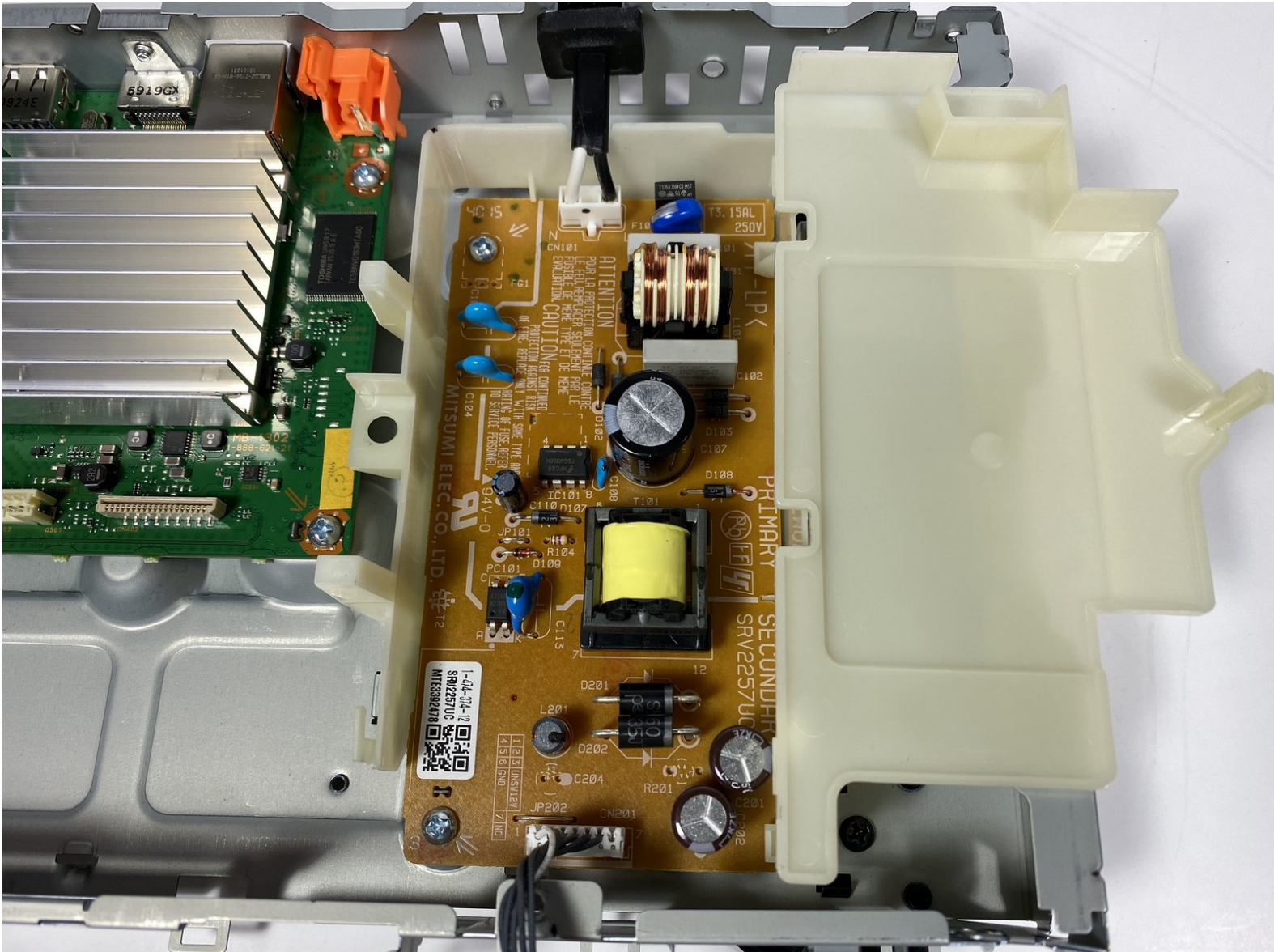




Sony BDP-s7200 Power Supply Board Replacement

Use this guide to replace the power supply board in your Sony BDP-S7200.

Written By: Erik Preston



INTRODUCTION

If your blu-ray player wont turn on, consider visiting the [troubleshooting page](#) to ensure it is not the power supply board. Sometimes there is a power surge in your home and your blu-ray player wasn't plugged into a surge protector. If that is the case your power supply board may have shorted out, and will need replacement. To check if your power supply board is toast check for these: blistered electrolytic capacitors, cracked solder joins, and scorch marks. If you tried all the tips, and your blu-ray player still won't take the juice, your power supply board may be faulty. This guide will show how to replace the power supply board clearly.



TOOLS:

- [Phillips #2 Screwdriver](#) (1)
 - [iFixit Opening Picks set of 6](#) (4)
 - [iFixit Opening Tools](#) (1)
-

Step 1 — Back Cover



- Remove the disk tray cover from the device.

Step 2



- Using the Phillips #2 Screwdriver, remove the five 9mm from the bottom of the device.
- Remove the metal cover.

Step 3



- Using the Phillips #2 Screwdriver, remove the six 9mm screws from the back of the device.

Step 4



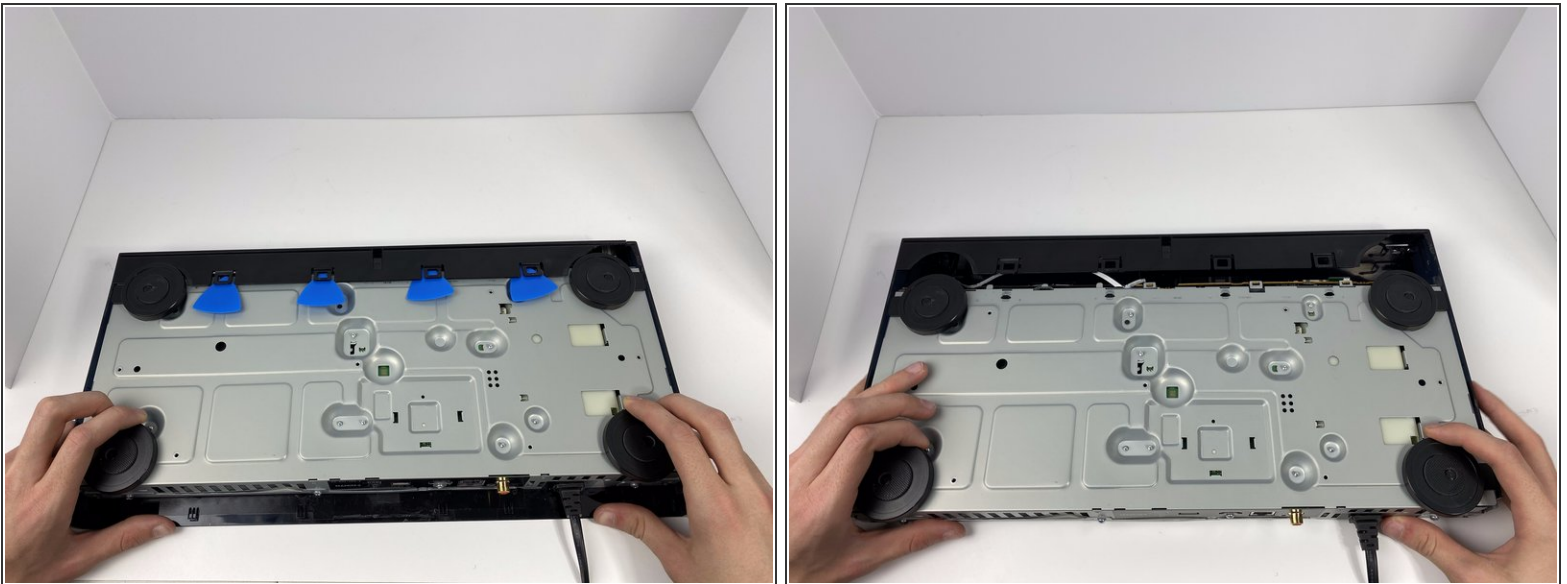
- Pull off the back panel and remove it from the device.

Step 5 — Front Panel Cover



- Using the plastic opening tool, open one of the tabs on the bottom of the device.
- While keeping the tab open, insert a opening pick in between the opening tool and tab.
- Repeat this for the 3 other tabs.

Step 6



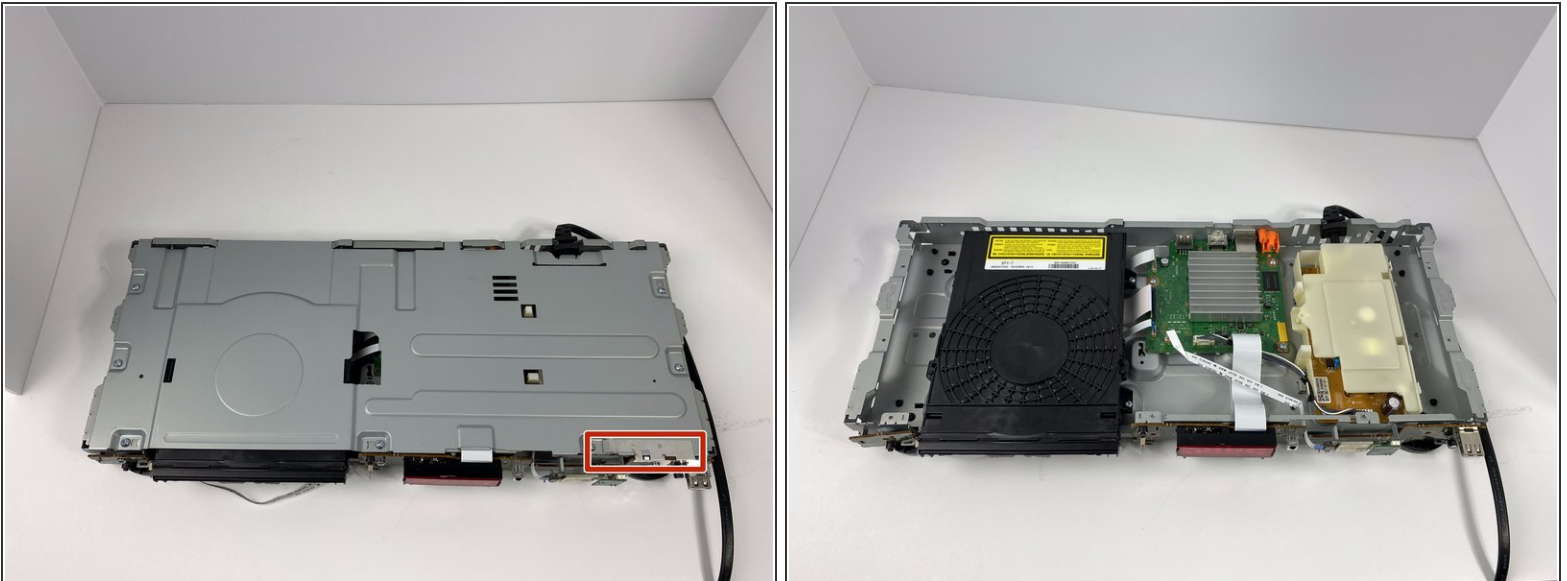
- Place your hands on the two black circles on the bottom of the device.
- Pull on the black circles to remove the device from its front panel cover.

Step 7



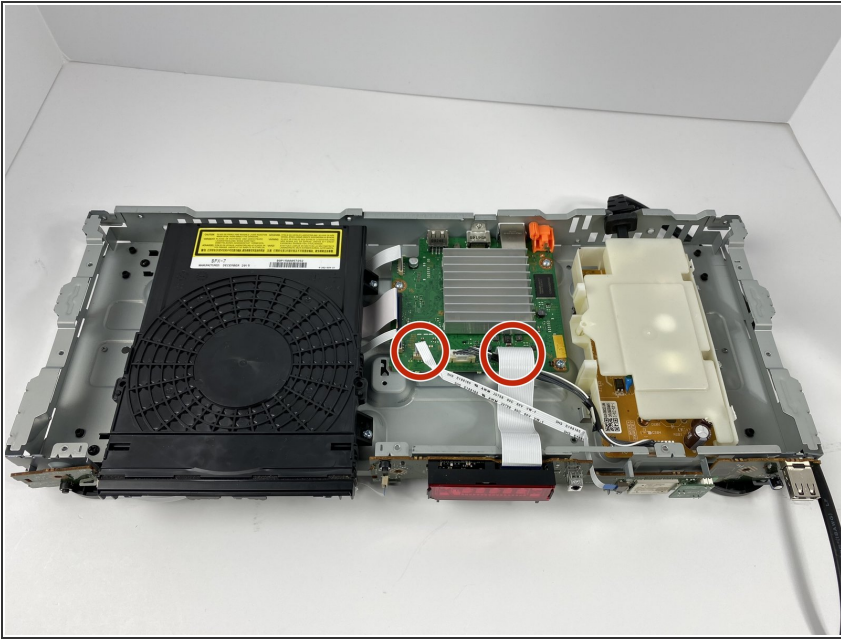
- Using the Phillips #2 Screwdriver, remove the seven 9mm screws from the top of the device.
- Using the same screwdriver, remove the three 9mm screws from the back of the device.
- Using the same screwdriver, remove the one 9mm screw still connecting the small metal clip to the front of the device.

Step 8



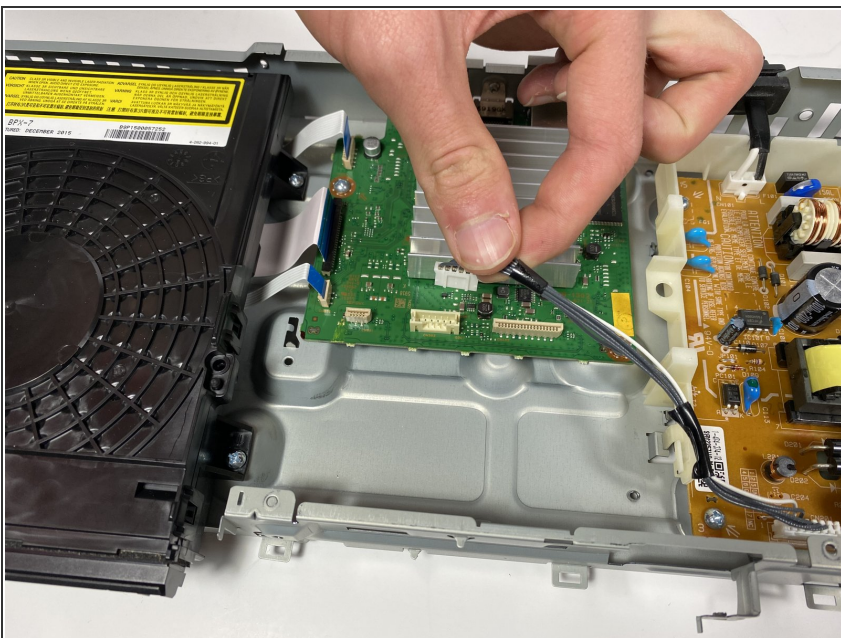
- Remove the small metal clip on the front of the device.
- Remove the metal cover on the top of the device.

Step 9 — Power Supply Board



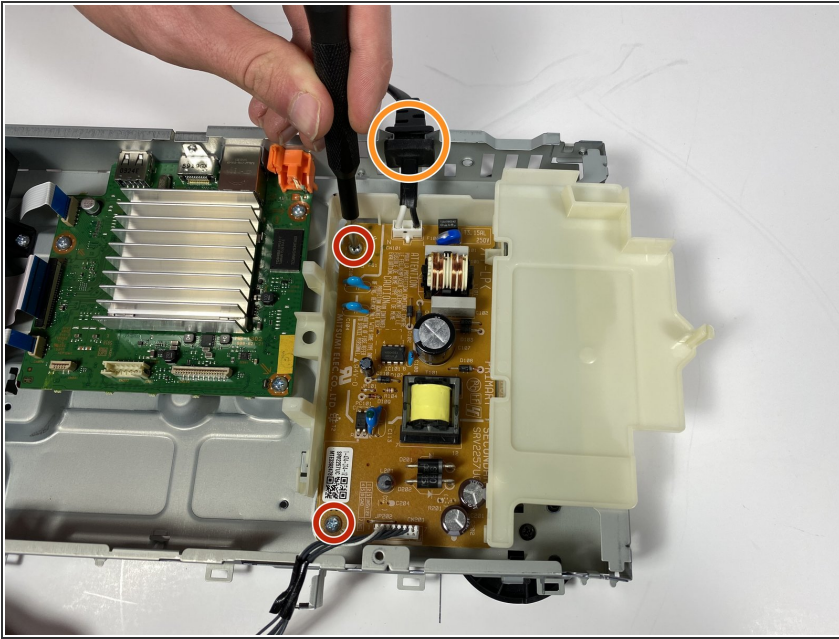
- Remove the ribbon cables that connect to the front panel board.
- ⚠ Pull firmly, but not too hard as to not damage the ribbon cable.

Step 10



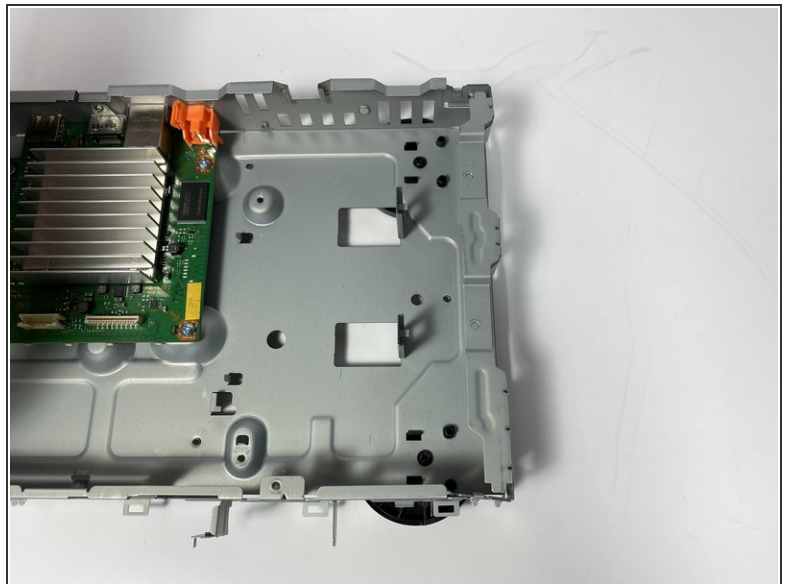
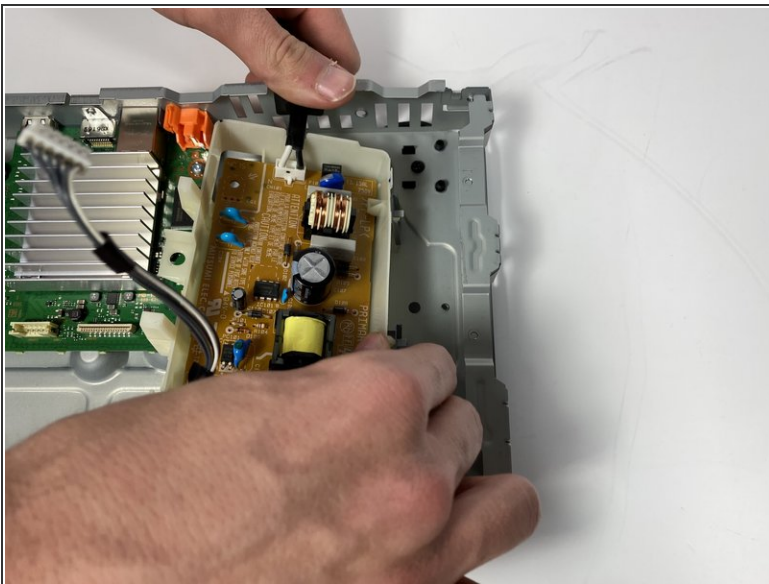
- Remove the power supply board cable connected to the motherboard.
- ⚠ Pull firmly, but not too hard as to not damage the ribbon cable.

Step 11



- Remove the 2 screws using the Phillips #2 screwdriver
- Slide the power cord out of it's slot in the frame.

Step 12



- Remove the Power Supply Board.

To reassemble your device, follow these instructions in reverse order.