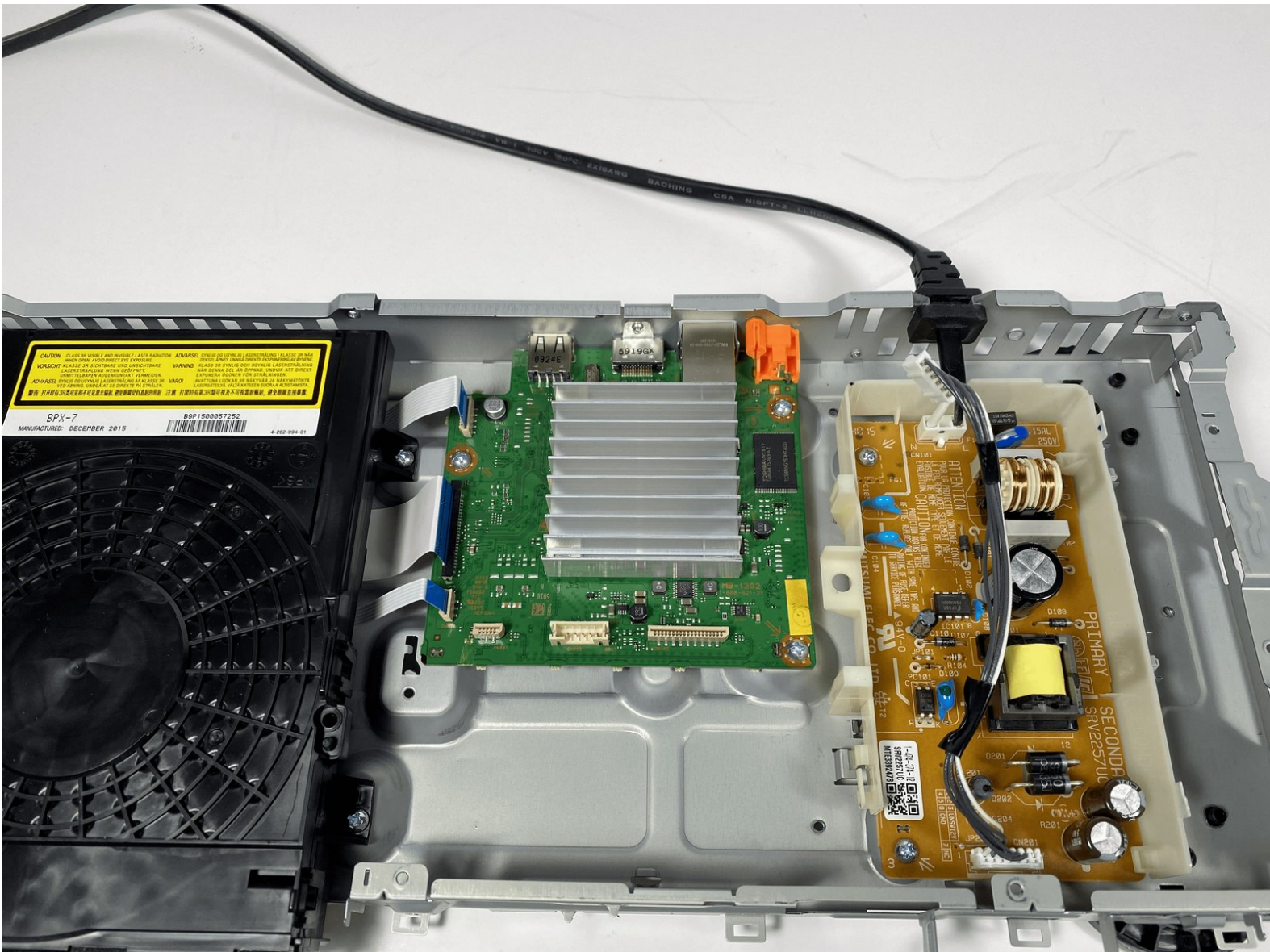




# Sony BDP-s7200 Motherboard Replacement

Use this guide to replace the motherboard in your Sony BDP-S7200 blu-ray player.

Written By: Erik Preston



## INTRODUCTION

If any of the ports on the back of your blu-ray player are broken, or not working, you may need to replace the motherboard entirely, as that is what they are connected to.

The motherboard is the brains of the blu-ray player, and without it, the blu-ray player won't be able to do anything. It also connects together many of the other components of the device, which can lead to it often being the place where an issue occurs. However, it is still possible that the error could be due to something other than the motherboard. We recommend reviewing the [troubleshooting guide](#) for this device beforehand, just to confirm that it is the motherboard.

This guide will demonstrate how quick and easy it is to replace the motherboard.



### TOOLS:

- [Phillips #2 Screwdriver](#) (1)
  - [iFixit Opening Picks set of 6](#) (4)
  - [iFixit Opening Tools](#) (1)
-

## Step 1 — Back Cover



- Remove the disk tray cover from the device.

## Step 2



- Using the Phillips #2 Screwdriver, remove the five 9mm from the bottom of the device.
- Remove the metal cover.



### Step 3



- Using the Phillips #2 Screwdriver, remove the six 9mm screws from the back of the device.

### Step 4



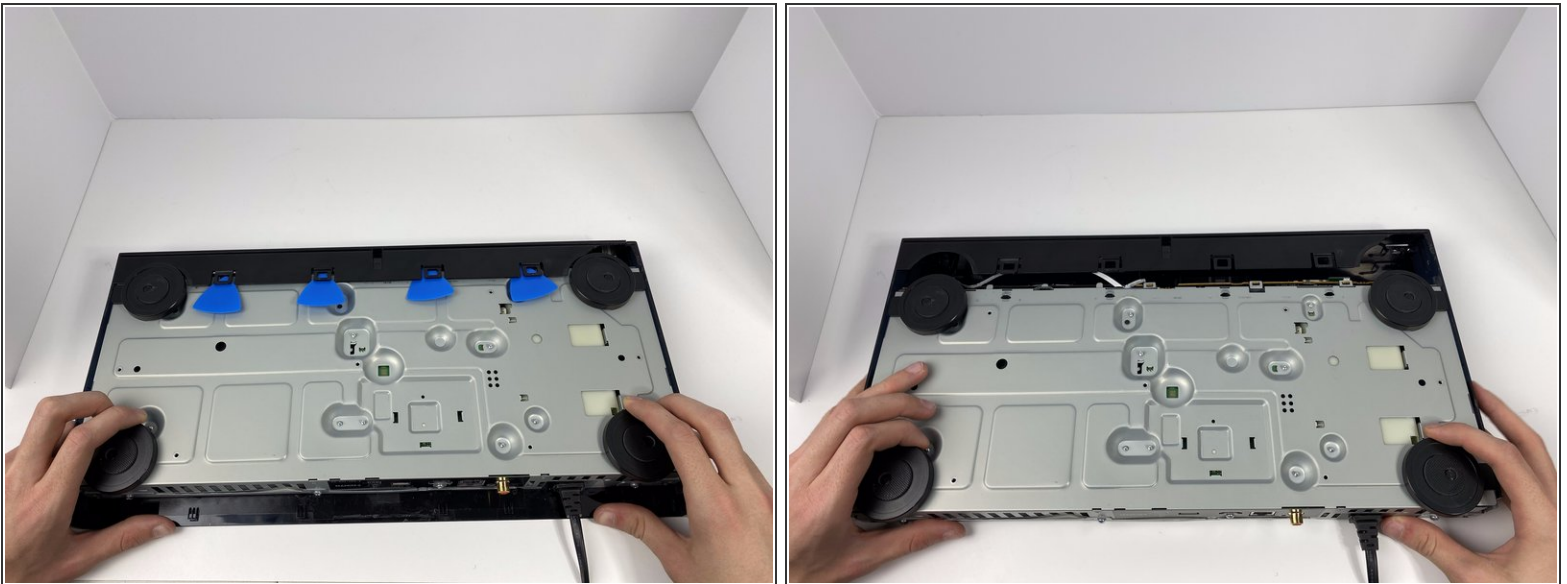
- Pull off the back panel and remove it from the device.

## Step 5 — Front Panel Cover



- Using the plastic opening tool, open one of the tabs on the bottom of the device.
- While keeping the tab open, insert a opening pick in between the opening tool and tab.
- Repeat this for the 3 other tabs.

## Step 6



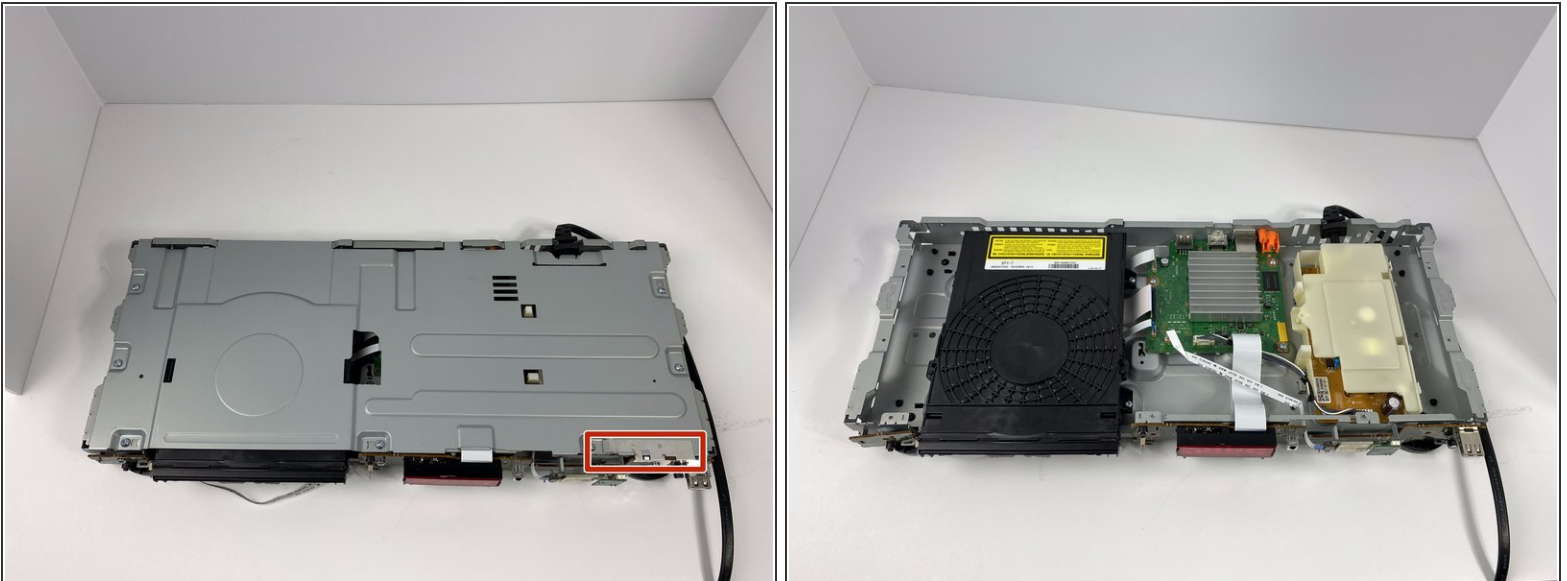
- Place your hands on the two black circles on the bottom of the device.
- Pull on the black circles to remove the device from its front panel cover.

## Step 7



- Using the Phillips #2 Screwdriver, remove the seven 9mm screws from the top of the device.
- Using the same screwdriver, remove the three 9mm screws from the back of the device.
- Using the same screwdriver, remove the one 9mm screw still connecting the small metal clip to the front of the device.

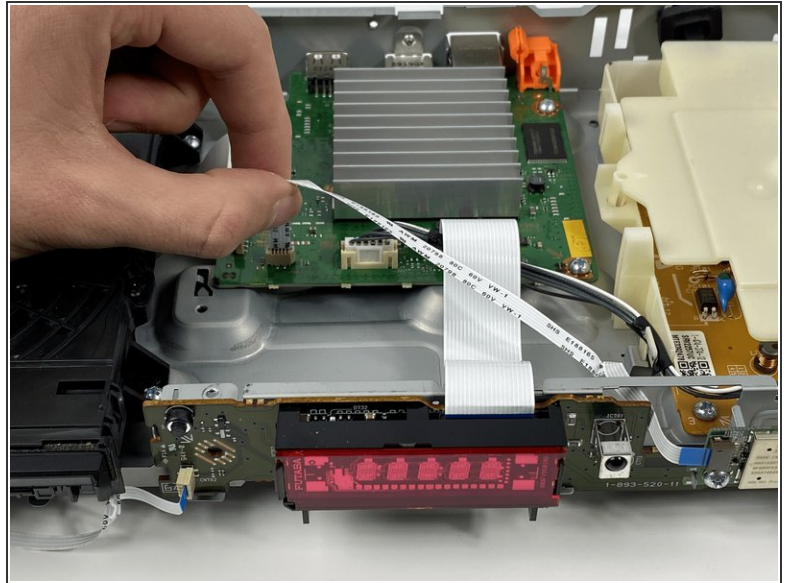
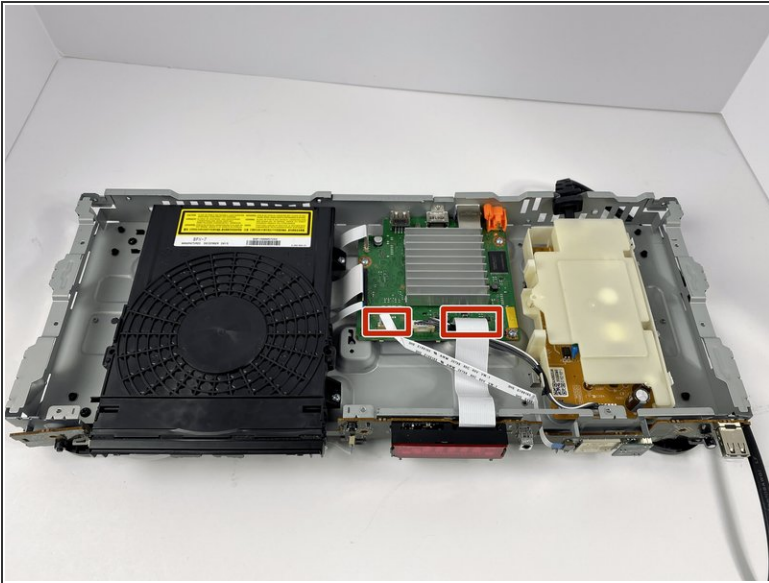
## Step 8



- Remove the small metal clip on the front of the device.
- Remove the metal cover on the top of the device.

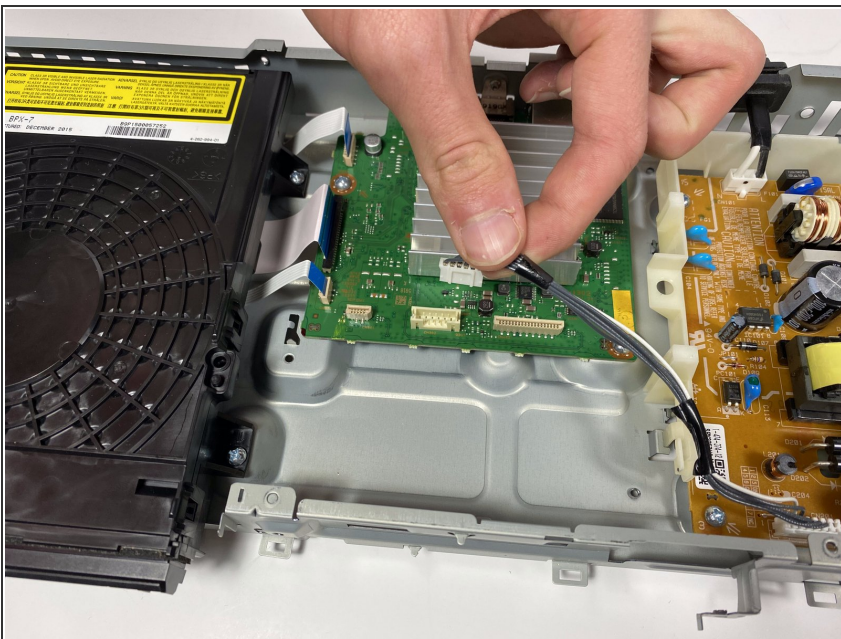


## Step 9 — Motherboard



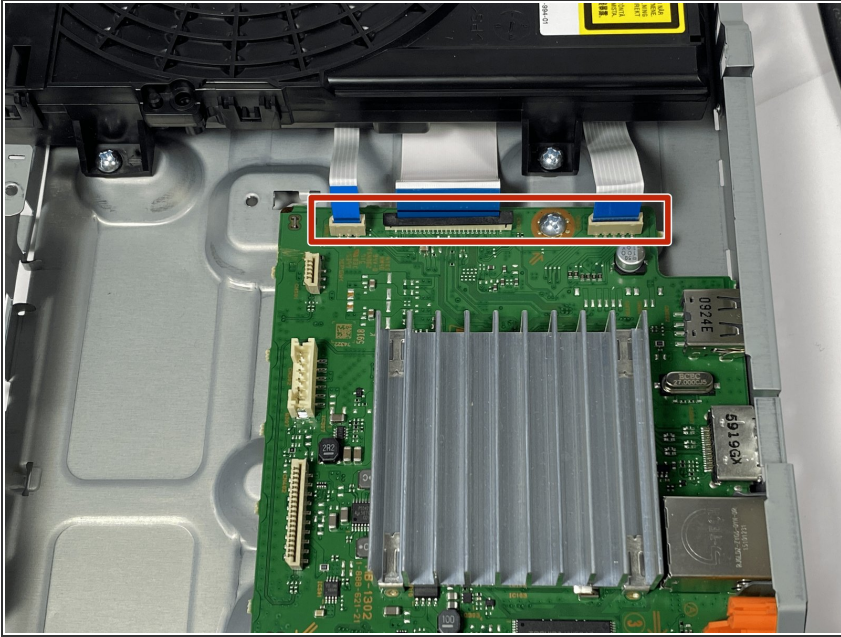
- Remove the ribbon cables connected to the front panel board.
- ⚠ Pull firmly, but not too hard as to not damage the ribbon cable.

## Step 10



- Remove the cable connected to the power supply.

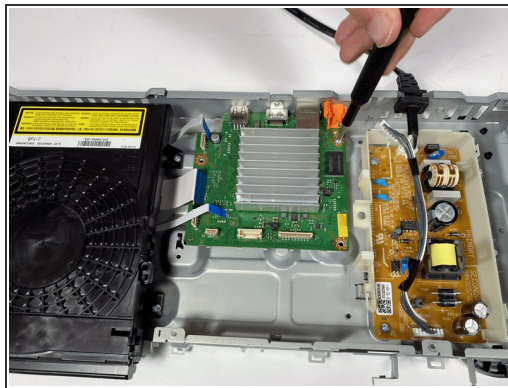
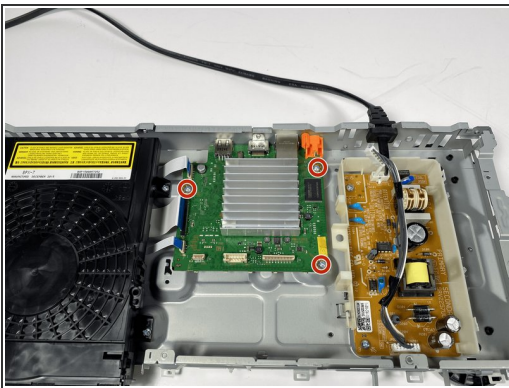
## Step 11



- Remove the ribbon cables that connect the motherboard to the disk drive.

⚠ Pull firmly, but not too hard as to not damage the ribbon cables.

## Step 12



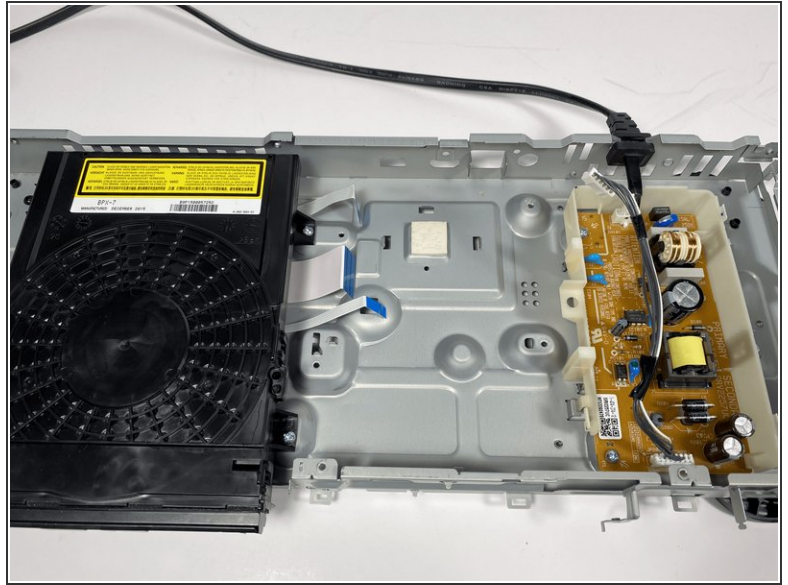
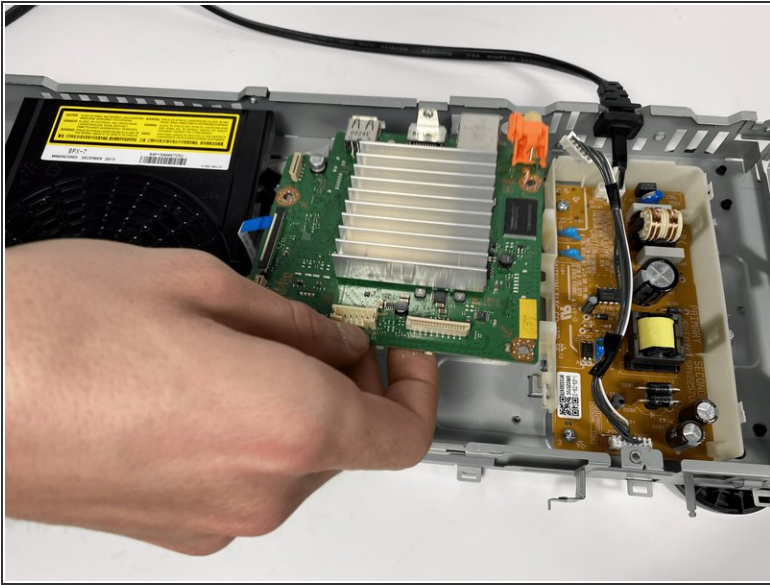
- Remove the three screws using the Phillips #2 Screwdriver.

⚠ Do not attempt to remove. There is one additional screw on the back of the device.

- Remove the screw on the back of the device with the same screwdriver.



## Step 13



- Lift the motherboard from the front and carefully pull it out.
- ⓘ There is a small square adhesive on the bottom. Leave it there for reassembly.

To reassemble your device, follow these instructions in reverse order.