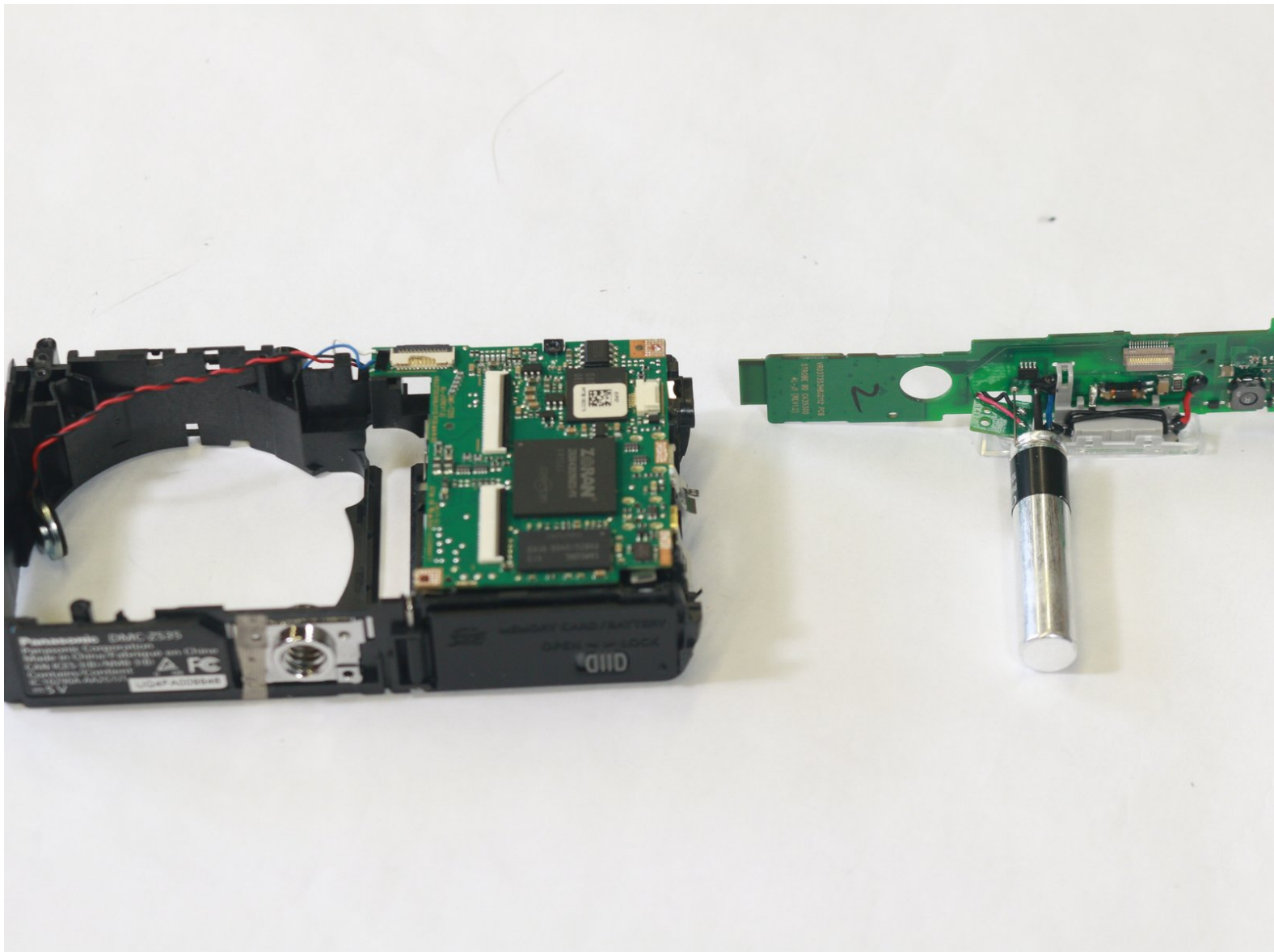




Panasonic Lumix DMC-ZS35 Flash Replacement

A step-by-step guide to replacing the flash on the Panasonic Lumix DMC-ZS35.

Written By: Rachel Hughes



INTRODUCTION

If your Lumix's flash isn't functioning, is broken, not performing as intended, or so on, it might be the result of a broken flash bulb within your Lumix. By following this guide, you'll be able to remove and replace your flash component to your Lumix.

Before you replace your flash, take a look at this Troubleshooting Guide to see if there is a simpler solution to your problem. Before beginning, make sure to turn off your camera completely and remove its battery.



TOOLS:

- [Phillips #000 Screwdriver](#) (1)
 - [iFixit Opening Tools](#) (1)
 - [Wedging Tool](#) (1)
-

Step 1 — Back Casing



- Remove the six 4mm screws located on the side and bottom of the camera casing using a Phillips #000 screwdriver.

Step 2



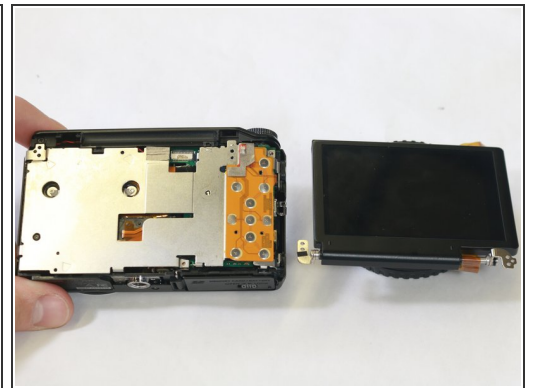
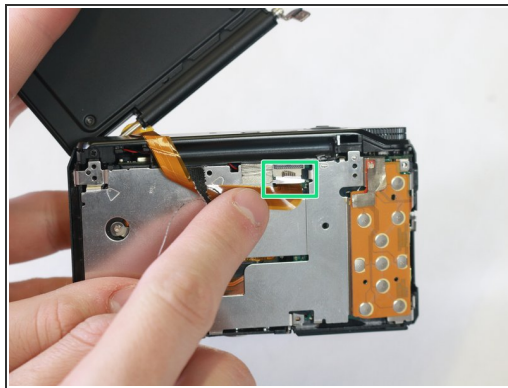
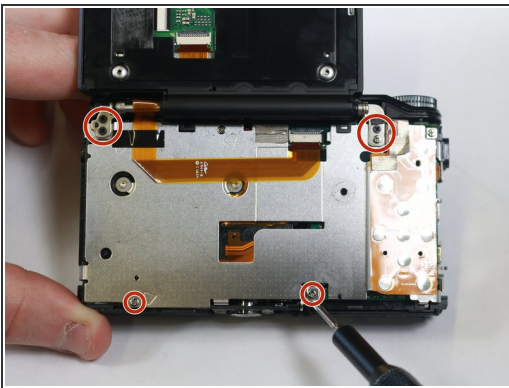
- Use a plastic opening tool to carefully separate the back casing from the main body of the camera. It's advised to run along the entire "seam" of the casing and the camera with the tool to ensure full separation.

Step 3



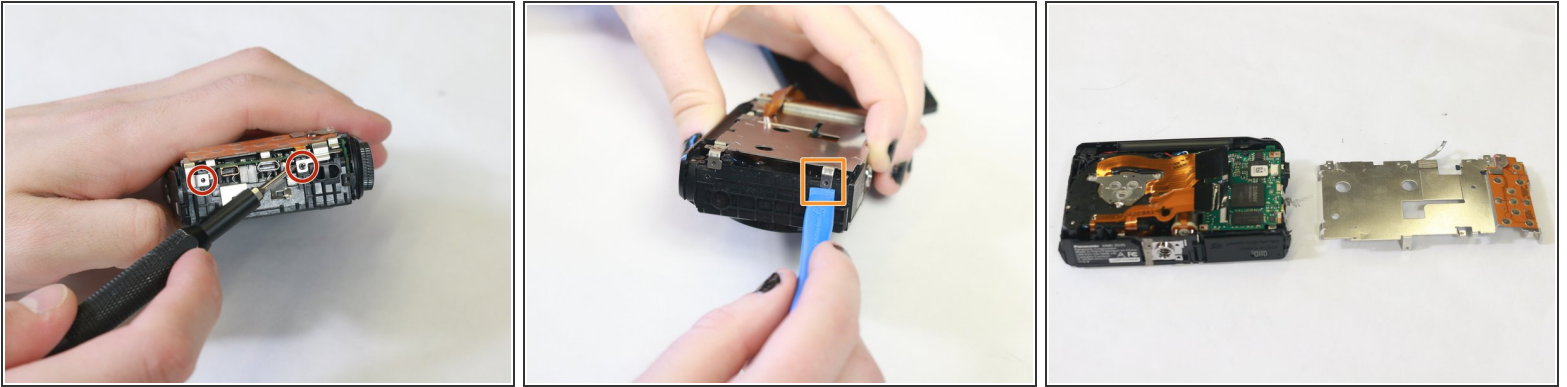
- Gently pry apart the back casing from the body of the camera. It's recommended to apply as minimal force as is necessary to prevent unintended damage to the camera or the casing.

Step 4 — Flash



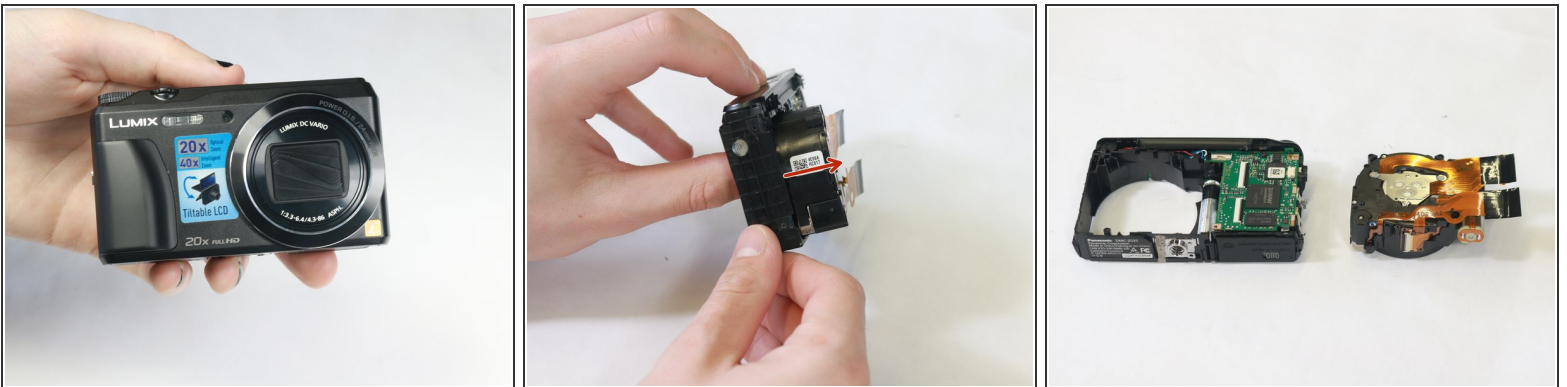
- Unscrew the six 3mm screws holding the LCD screen hinge in place using a Phillips 000 screwdriver.
- Gently pull LCD screen ribbon cable from the internal port to disconnect the screen and prevent unwanted damage.
- Lift the freed LCD screen from the base of the camera to complete the process.

Step 5



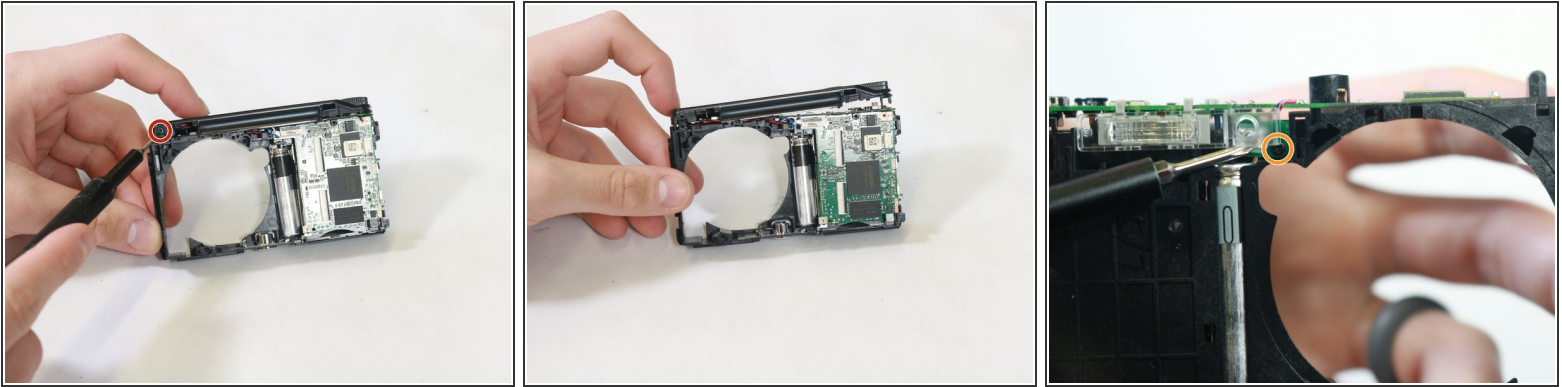
- Unscrew the two 4mm screws holding the metal plate on the side of the camera with a Phillips #000 screwdriver.
- Using the opening tool, carefully separate the metal plate from the main body of the camera.

Step 6



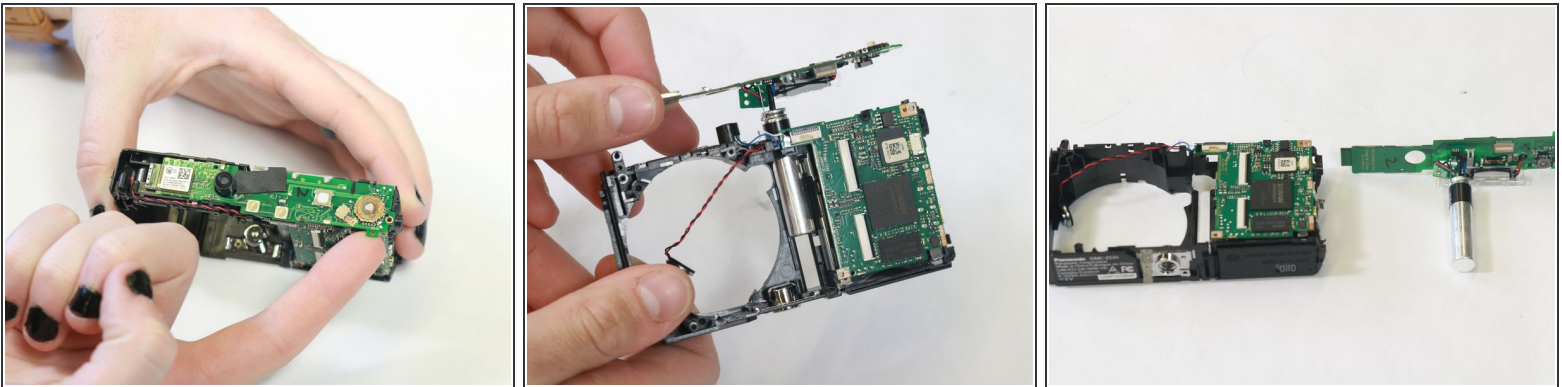
- Push the lens out from the front of the camera with your finger. Since you have already removed all of the screws holding it in place, you should be able to push it out with ease with little to no resistance.

Step 7



- Face the front of the camera away from you, and remove the 3mm screw in the upper left corner with a Phillips #000 screwdriver.
- Now that you have removed all of the screws holding it down, the entire top panel will be loose. Wiggle it with your fingers until you are able to completely remove it.
- Remove the 3mm screw that is tucked behind the flash with a Phillips #000 screwdriver. It is a little tricky to see, but your screwdriver should be able to fit between the crack.

Step 8



- The top panel motherboard is ready to be removed. With your fingers, lightly tug on it from each corner to loosen it.
- Once it is loose, pull the entire flash module off to completely remove it from the main body of the camera.

To reassemble your device, follow these instructions in reverse order.