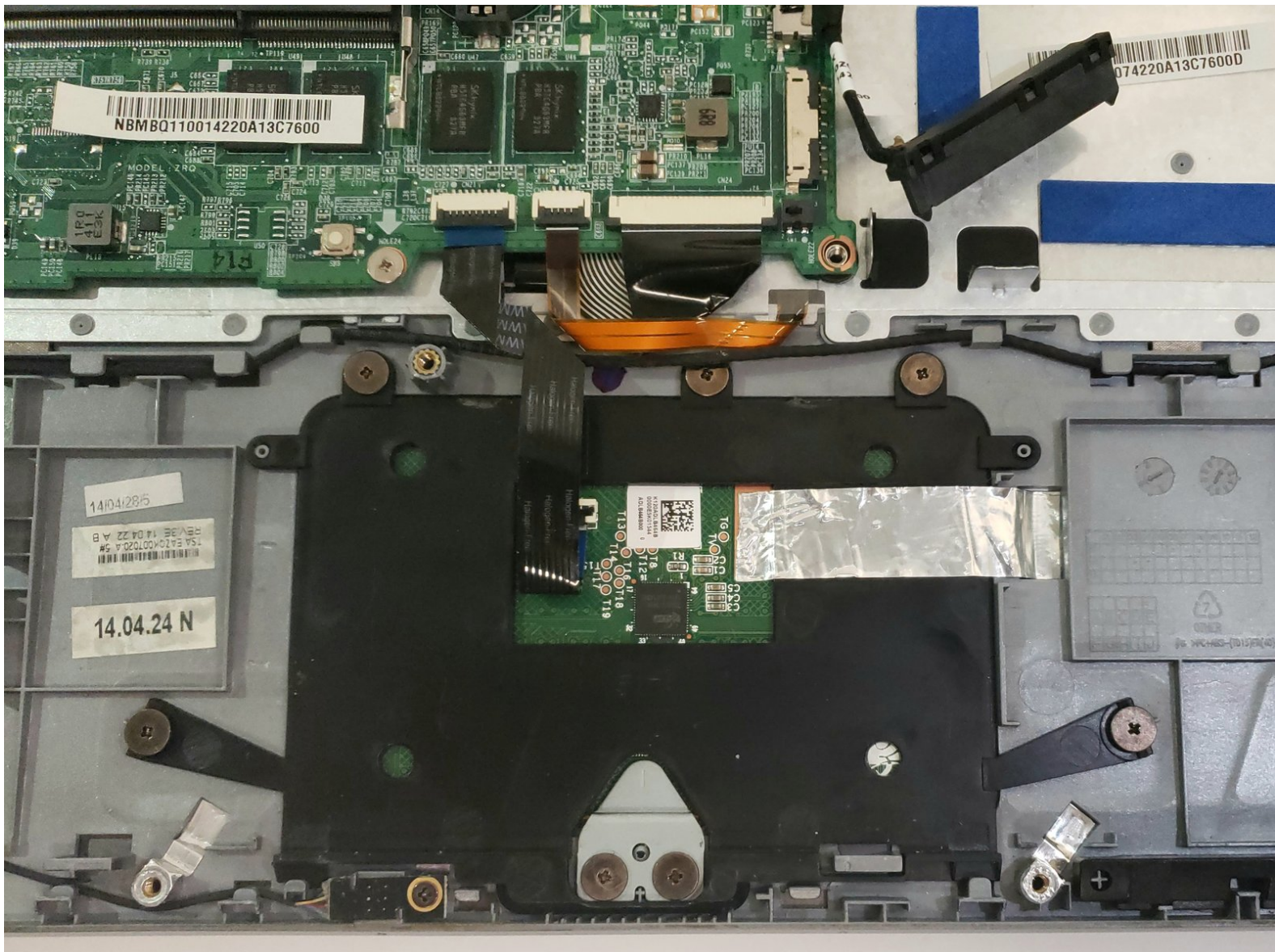




# Acer Aspire V5-473P-5602 Touchpad Replacement

Use this guide to safely check the Acer Aspire...

Written By: Thuy Tran



## INTRODUCTION

Use this guide to safely check the Acer Aspire V5-473P-5602 touchpad's connections or remove and replace a faulty touchpad.

Before attempting to replace the touchpad, make sure to review the troubleshooting page here. It is quite often that the part can be fixed without having to replace it. However, if you did a factory restore and the problem persists, it is a hardware problem. It can be either connection issue or faulty touchpad.

To check connections, simply unplugging and reconnecting the touchpad.

If you want to avoid replacing the part, you can also switch to a mouse instead. Make sure you turn the touchpad off using the key combination of FN and F7 before switching to a mouse.

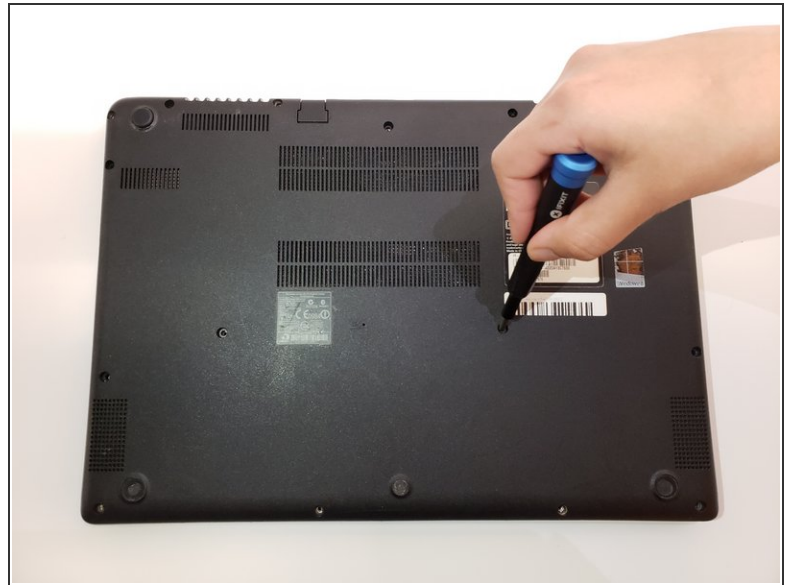
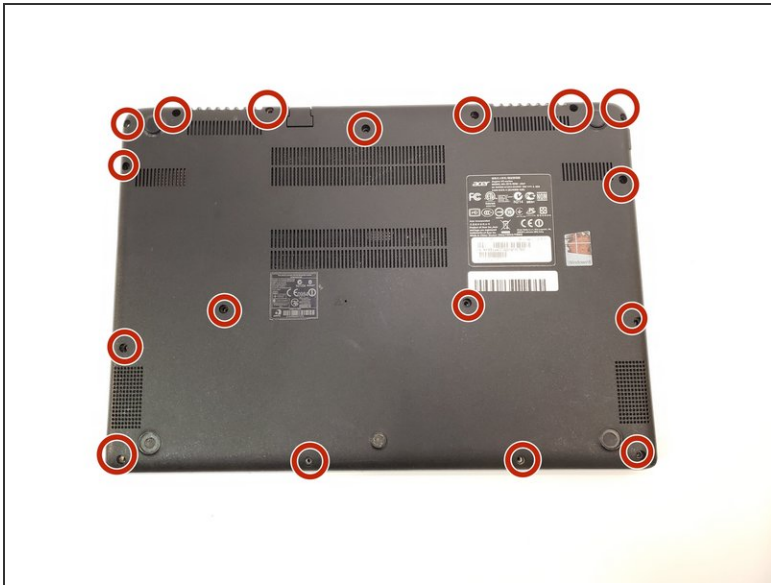


### TOOLS:

- [iFixit Opening Tool](#) (1)
  - [Phillips #0 Screwdriver](#) (1)
  - [Spudger](#) (1)
-

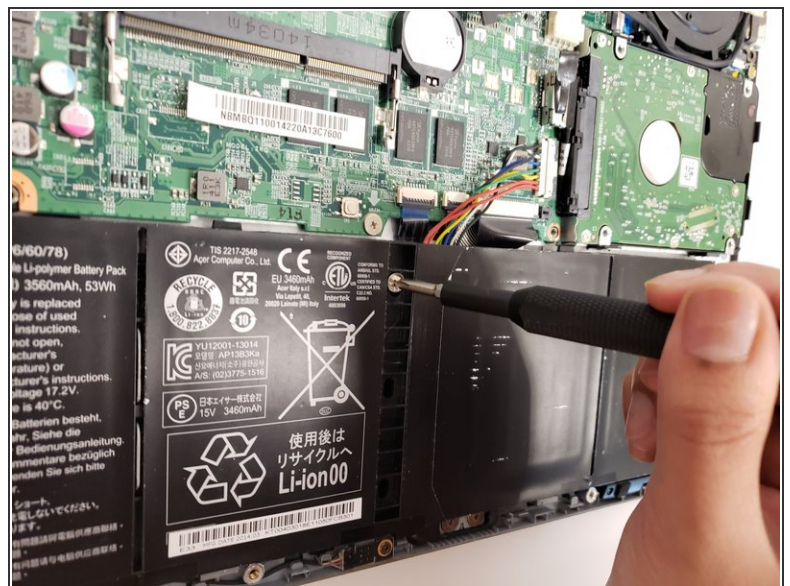
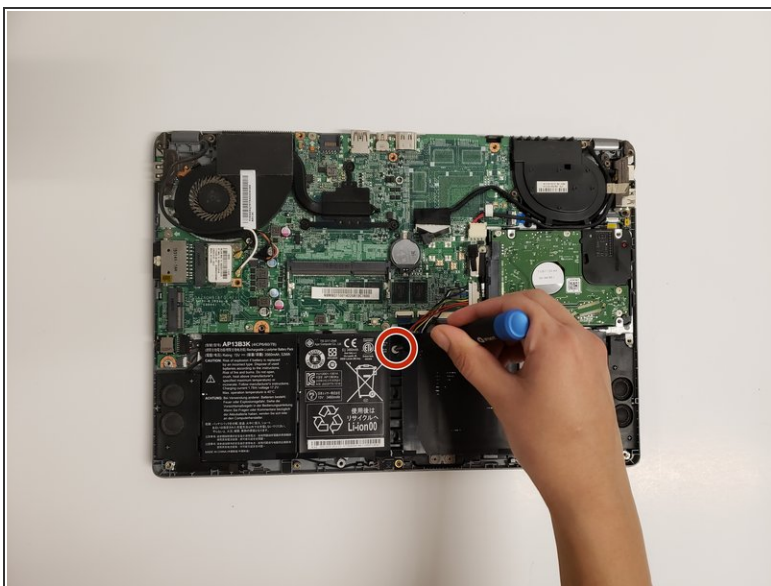


## Step 1 — Back Panel



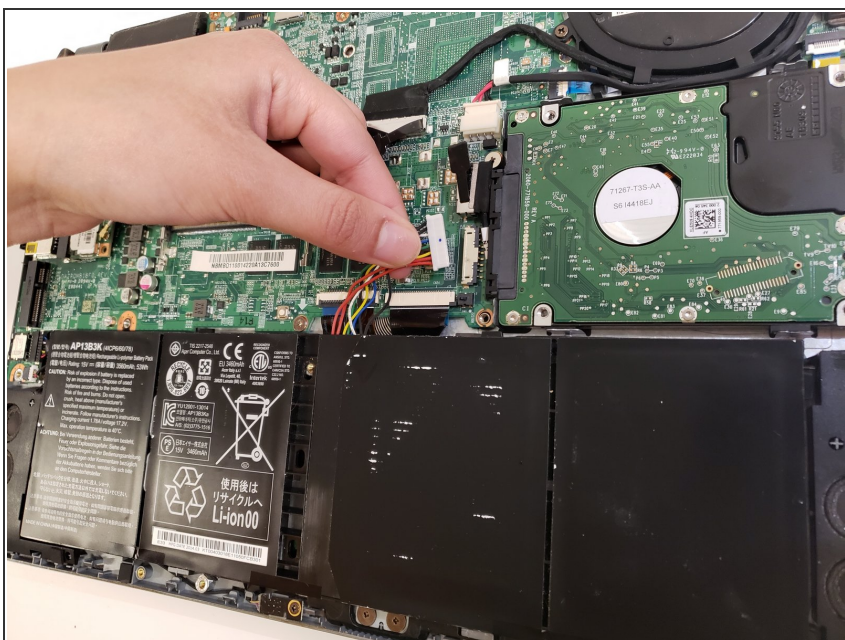
- Flip the laptop over so the back panel is facing upwards.
- Use the Phillips #0 screwdriver to remove seventeen 2.5mm screws.
- Remove the back panel from the laptop using an iFixit opening tool.

## Step 2 — Battery



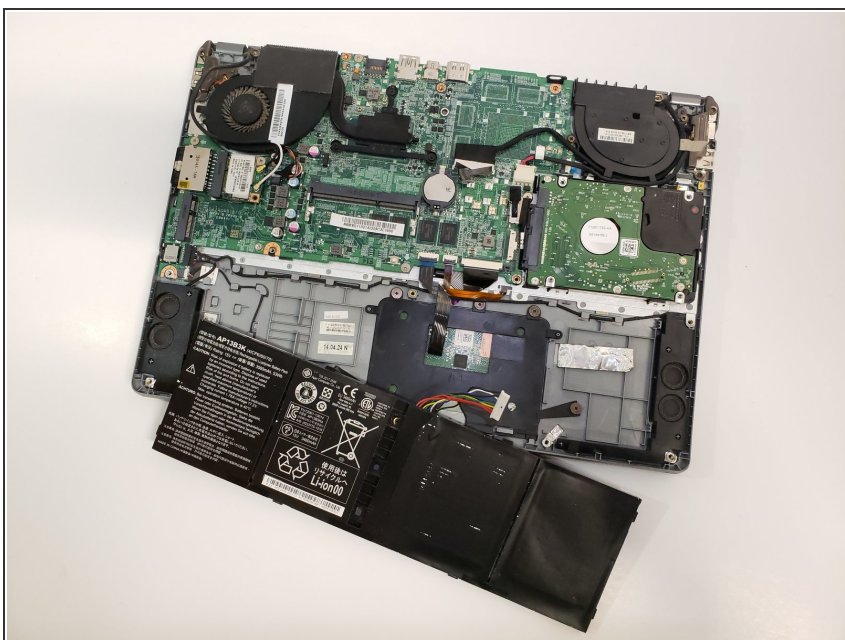
- Remove the Phillips #0 screw from the middle of the battery.

## Step 3



- Unplug the battery from the motherboard.

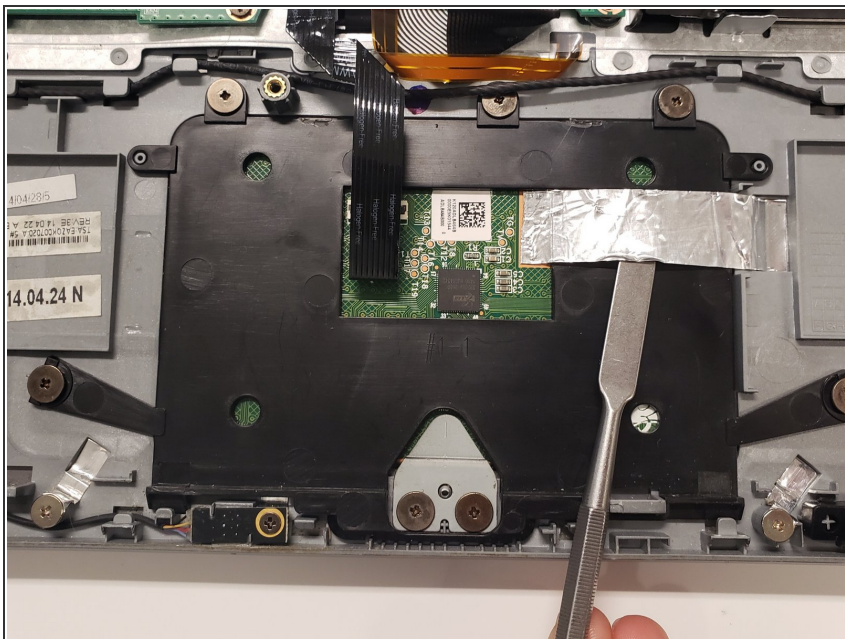
## Step 4



- Carefully take the battery out of the device.

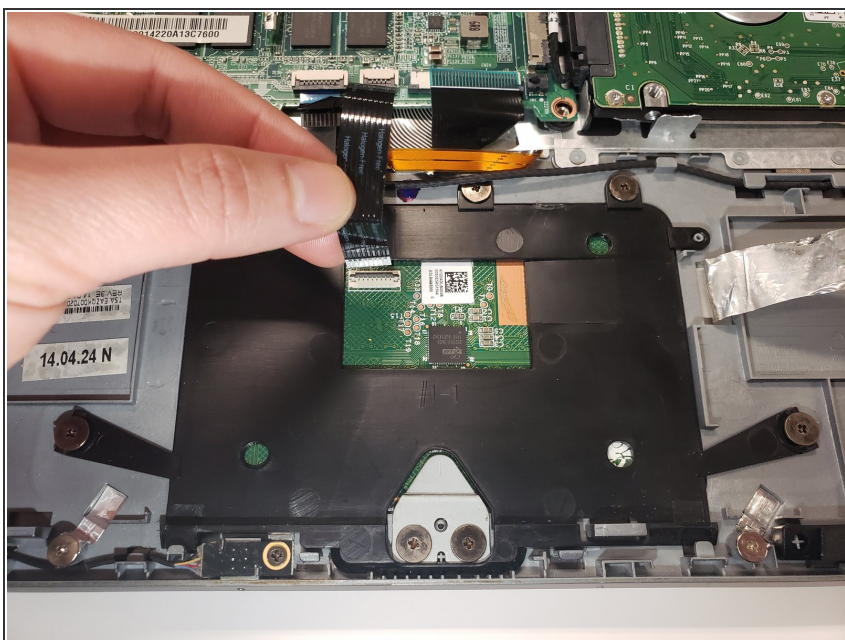


## Step 5 — Touchpad



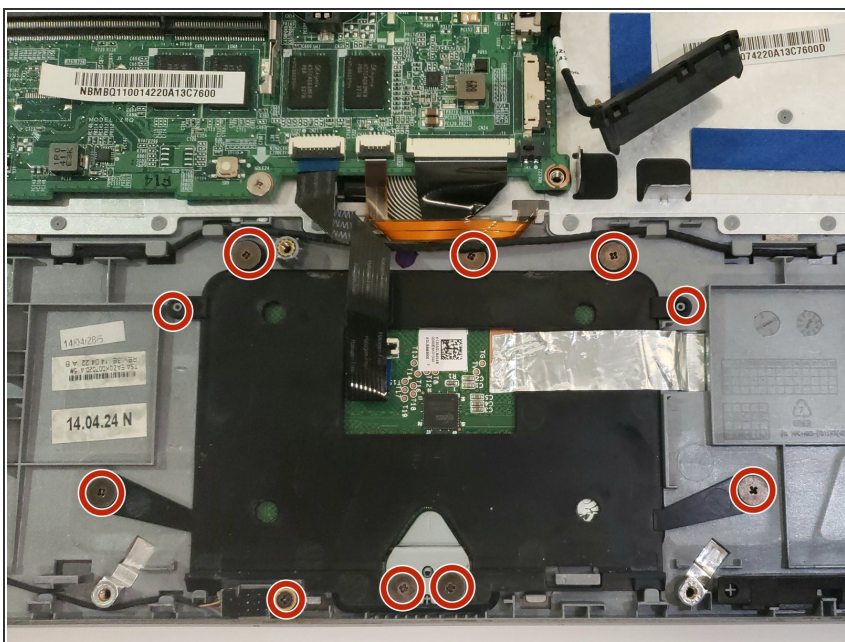
- Use a spudger to remove the aluminum foil tape from the touchpad.

## Step 6



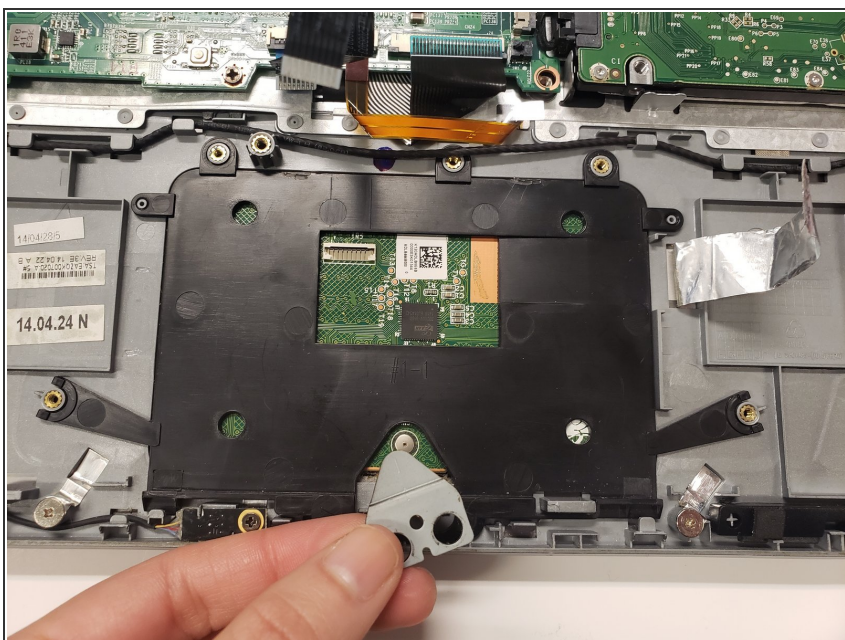
- Unplug the cable from the touchpad.

## Step 7



- Remove ten Phillips #0 screws securing the touchpad to the base.

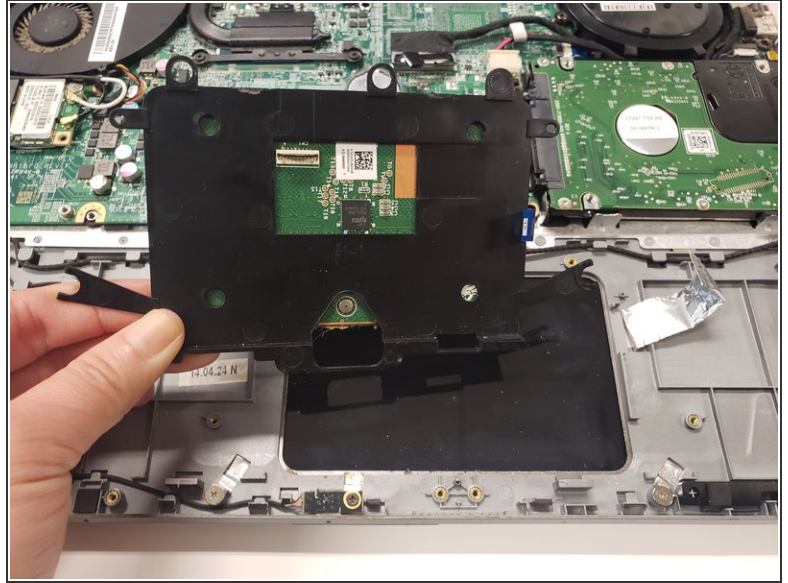
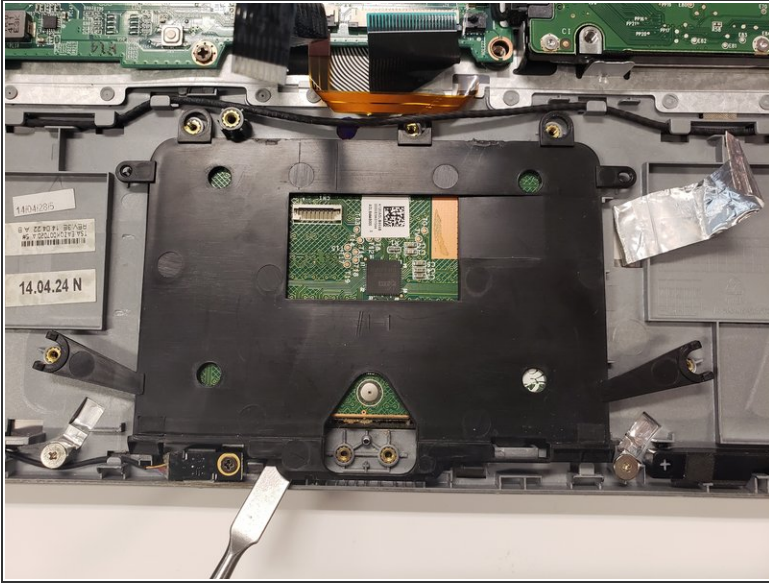
## Step 8



- Use the pointed end of a spudger to remove the small triangular metal piece.



## Step 9



- Use the spudger to lift up the touchpad carefully.
- ☑ Remember to use electronic cleaner to clean the touchpad screen surface before placing the new touchpad back in.

To reassemble your device, follow these instructions in reverse order.