



# Milwaukee Hole Hawg 1675-1 Switch Replacement

This guide will show the steps necessary to replace the switch on the Milwaukee Hole Hawg 1675-1.

Written By: Rufus Bailey



---

## INTRODUCTION

Has your Milwaukee Hole Hawg stopped responding when you squeeze the trigger? If so, it could be a faulty switch and in need of replacement. Take a look at the [Milwaukee Hole Hawg 1675-1 Troubleshooting Page](#). The switch makes a connection when depressed that supplies power to the motor for use. Over time connectors inside the switch can fail or the switch housing can break. All you will need for this repair is a T27 and T15 Torx bit along with a #0 flathead screwdriver.



### TOOLS:

- [T15 Security Torx Screwdriver](#) (1)
  - [T27 Torx Bit](#) (1)
  - [Flathead Screwdriver](#) (1)
-

## Step 1 — Switch



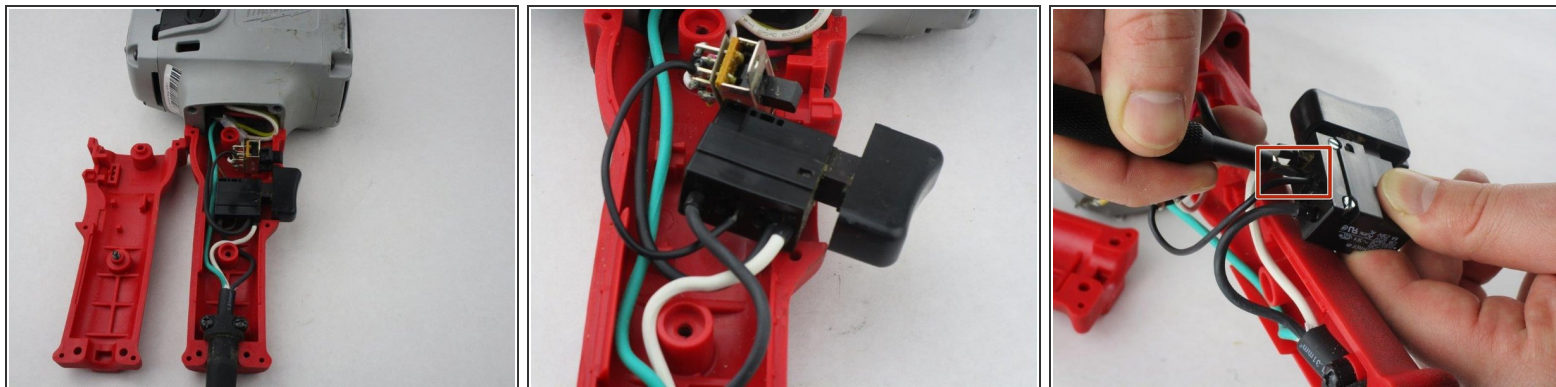
- ⚠ Ensure that the drill is unplugged.
- Position the drill so that it is on its side.

## Step 2



- Remove the four 19mm Torx T15 screws.
- Remove the two 25mm Torx T27 screw.

## Step 3



- Remove the top portion of the handle.
- ⓘ Pay special attention to where each wire connects.
- Lift up on the switch and disconnect the wires.
- Use a #0 flathead screwdriver to release tension on the wires.

To reassemble your device, follow these instructions in reverse order.