



1998-2003 Mazda Protégé Radio LCD Screen Repair.

How to fix or repair a broken / ghosted / blinking / inconsistent LCD display on a 2001 Mazda Protege radio.

Written By: Shmuel Ament



This document was generated on 2020-11-28 08:04:10 AM (MST).

INTRODUCTION

As a car ages some of the connections can deteriorate. If your LCD display is not working properly with only some of the segments showing, or if the segments sometimes show and sometimes does not show, then it's likely the result of a faulty connection. In some cases, the repair is relatively easy. Sometimes, the connection between the LCD and the circuit boards simply needs to be cleaned. In this case though, there is no connection that can be cleaned so the connection needs to be re-soldered. If you need more information on soldering check out the [guide](#) on iFixit.

TOOLS:

- [Radio Removal Tool](#) (2)

I used 2 but it will probably be easier with 4

- [Spudger](#) (1)

Or any devise that can be used to pry things open

- [Soldering Iron](#) (1)
 - [Solder](#) (1)
 - [Phillips #2 Screwdriver](#) (1)
-

Step 1 — 1998-2003 Mazda Protégé Radio LCD Screen Repair.



- Use the spudger to remove both side covers to access the radio removal holes.

Step 2



- Use the spudger to remove this plastic cover to make the radio removal easier.

Step 3



- Remove each side of the radio separately. Starting with the left side, put the 'radio removal tool' in the bottom 4 holes until you hear a "click"
- ⓘ The top hole is not for the radio removal tool.
- Then pull the left side of the radio out.
- ⓘ It may be easier if 2 sets of radio removal tools are used (2 come in one set). Then both sides can be removed at the same time.

Step 4



- Then repeat the process with the right side.

Step 5



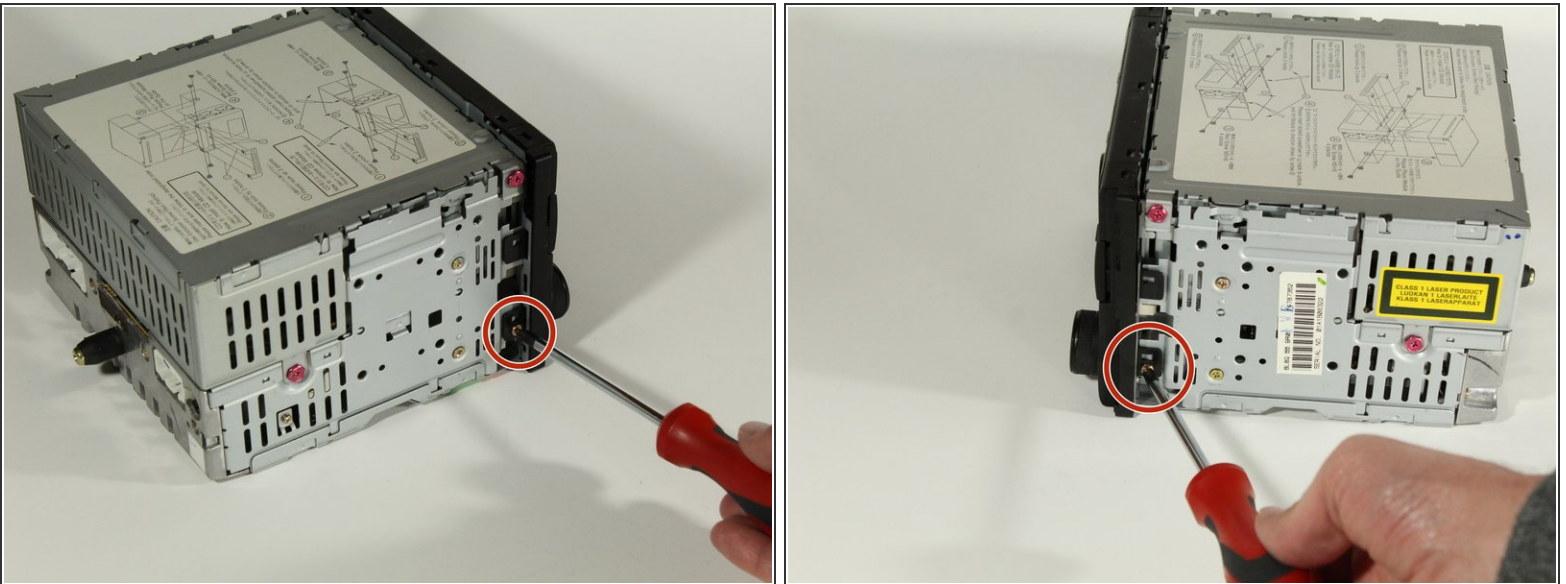
- Pull the radio out, you may have to wiggle it back-and-forth several times to get it out.

Step 6



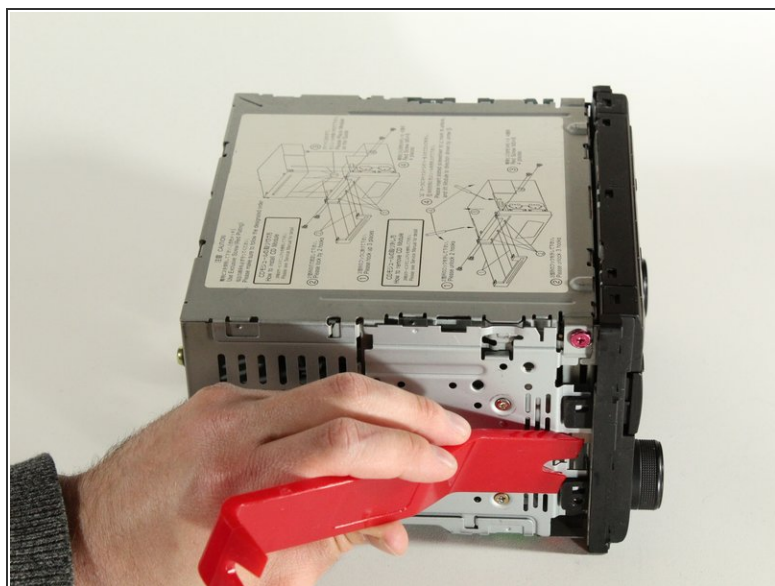
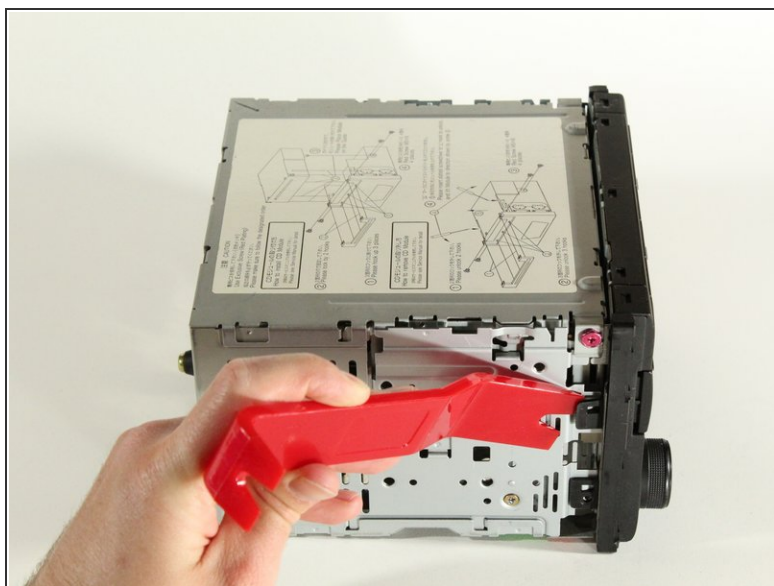
- Remove the radio Antenna.
- ⓘ You will have to pull the antenna very hard to remove it, but don't worry, it will not damage it.
- Remove the wiring harness by pressing on the clip on the underside of the harness.

Step 7



- Using the Phillips #2 screwdriver, remove the two 5.0 mm screws on either side of the control panel.

Step 8



- Pry-off the control panel tabs with the spudger.

Step 9



- Using the spudger, pry the top control panel tabs off.

Step 10



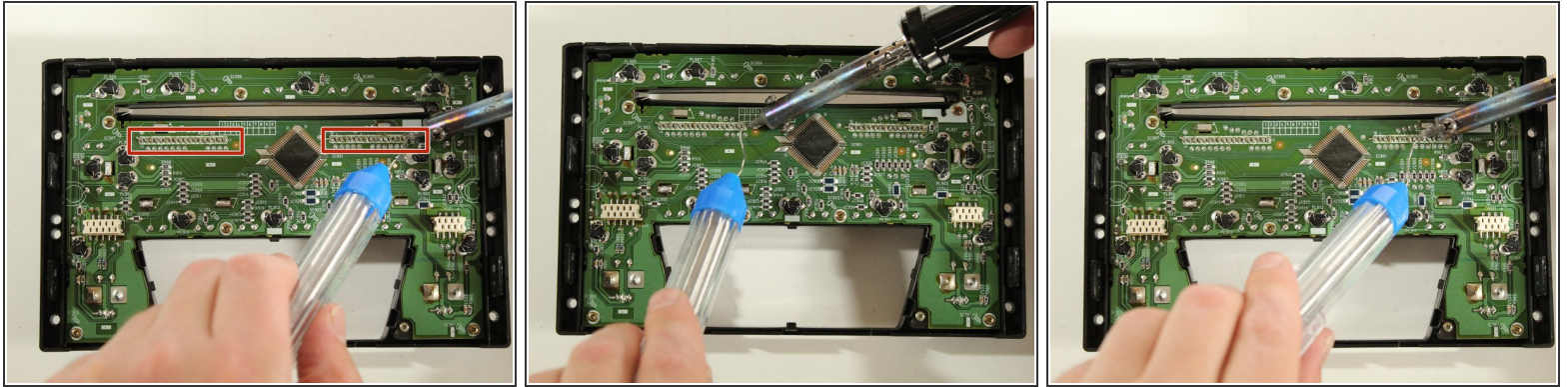
- Using the spudger, pry the bottom control panel tabs off.

Step 11



- Remove the control panel.

Step 12



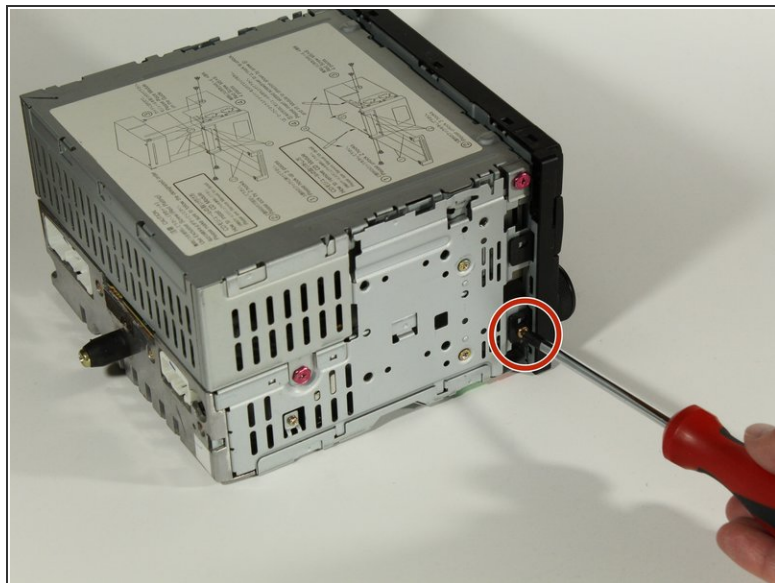
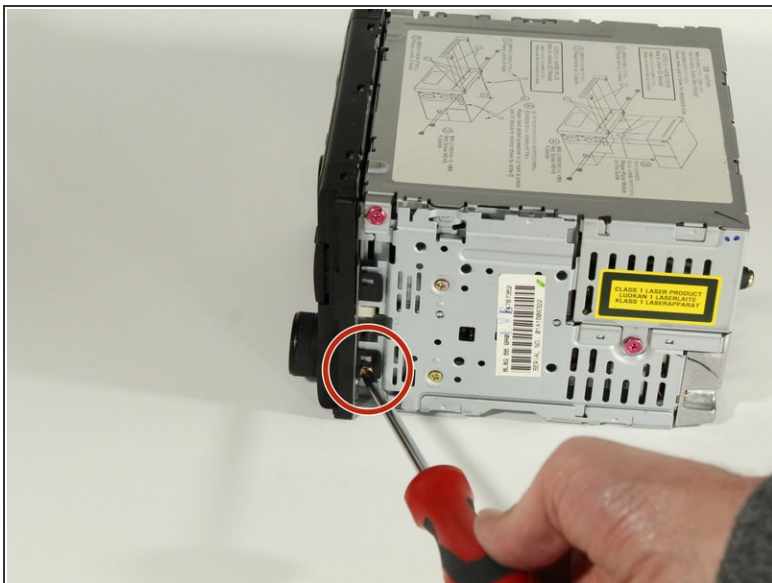
- Re-solder the LCD connections with a soldering iron.
- ⓘ You may or may not need extra solder. Just be sure that all solder connections look good. (Refer to attached soldering guide)
- ⚠ The soldering iron is hot so please be careful not to burn yourself.

Step 13



- Re-clip the control panel back onto the radio.

Step 14



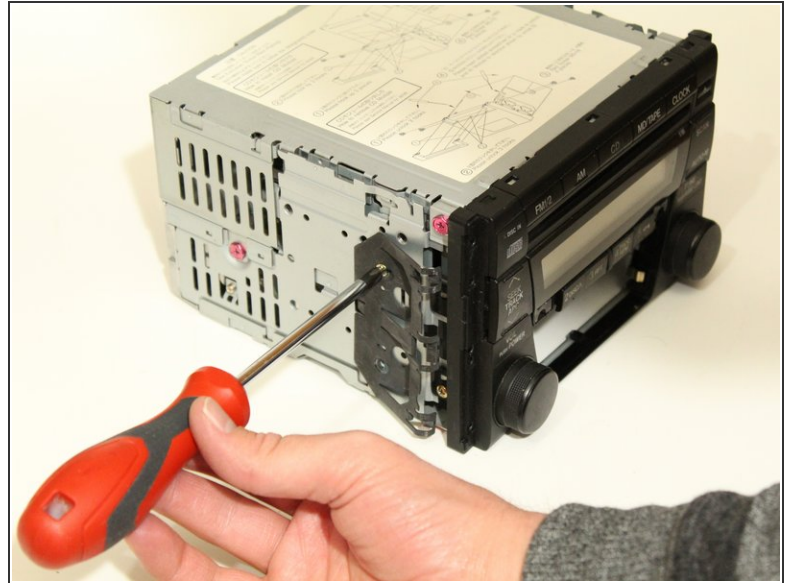
- Using a Phillips #2 screwdriver, screw in both 5 mm screws on either side of the radio.

Step 15



- Insert the radio back into it's place in the same way that you removed it.

Step 16



- i** I removed the anti-theft clip from my radio (as you can see that it's not in any of the pictures) making it's removal very easy. I do not need my radio removal tools any more. I can simply pull it out with my hands.

To reassemble your device, follow these instructions in reverse order.