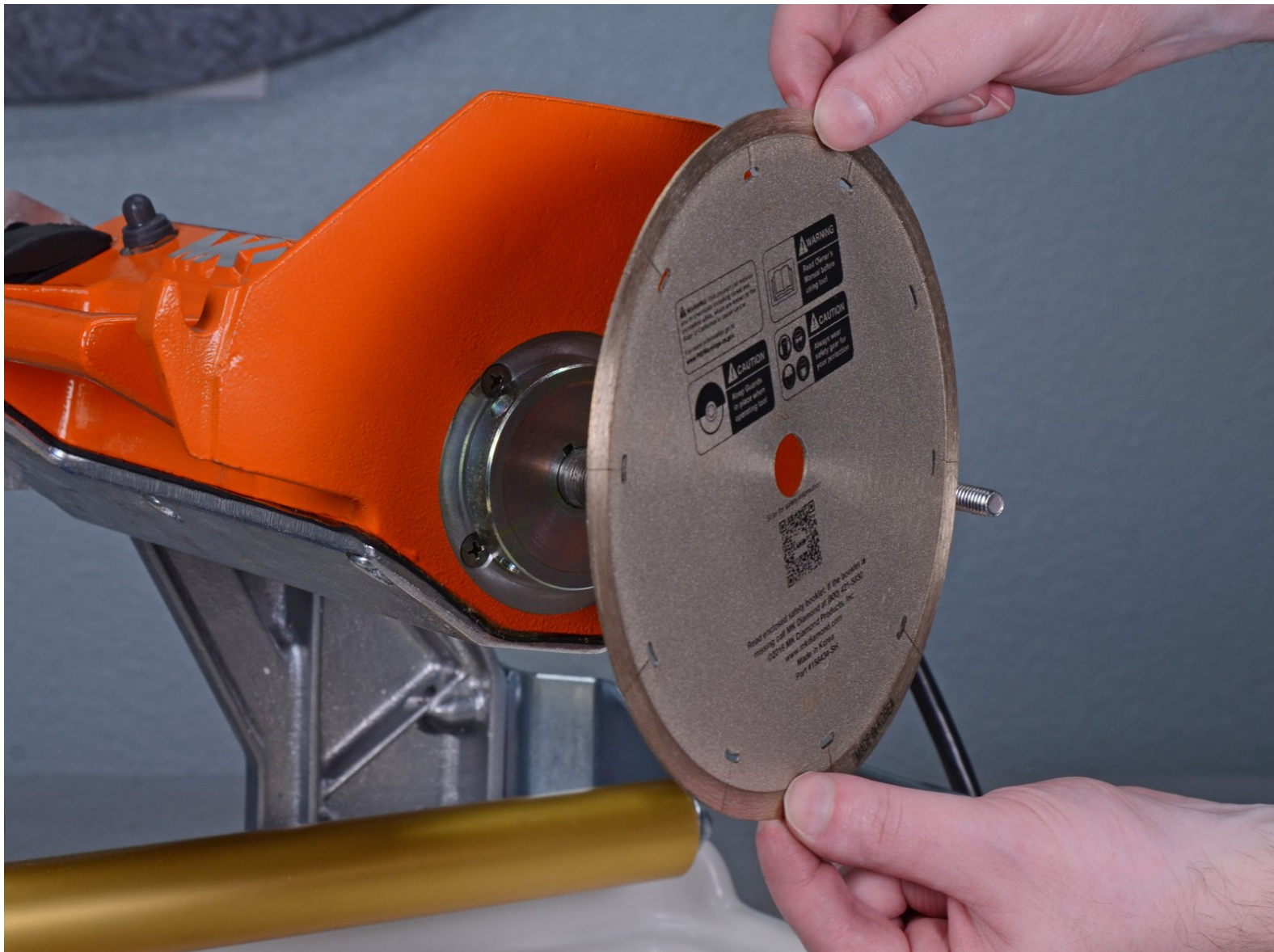




# Mk Diamond Wet Saws MK660 2010 Blade Replacement

How to remove the blade for replacement in a Mk Diamond Wet Saw MK660 2010.

Written By: Carsten Frauenheim



---

## INTRODUCTION

How to remove the blade for replacement or to service the cutting head in a Mk Diamond Wet Saw MK660 2010.





### PARTS:

- [Mk Diamond Blade, 7 Diax5/8 Arbor 153441](#) (1)
-

## Step 1 — Blade Cover



 Before you begin, make sure to power off and unplug the device from the outlet.

 If the clear water pump hose is connected, remove it now.

- Loosen the plastic knob holding the saw's cutting head in place.
- Lower the cutting head while keeping it steady.

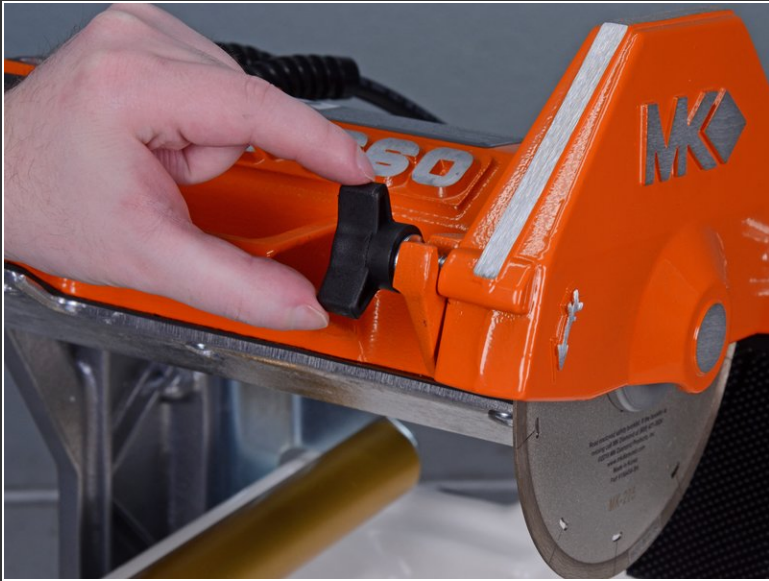
## Step 2



- Unscrew the knob.
- Remove it from the cutting head.

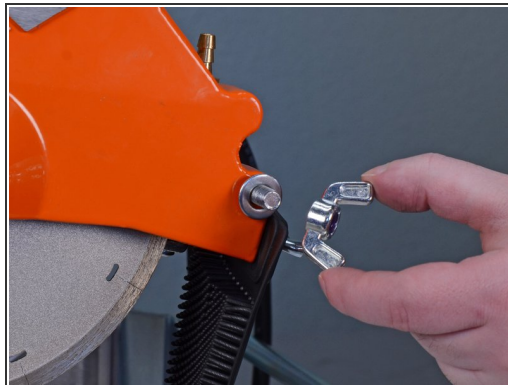
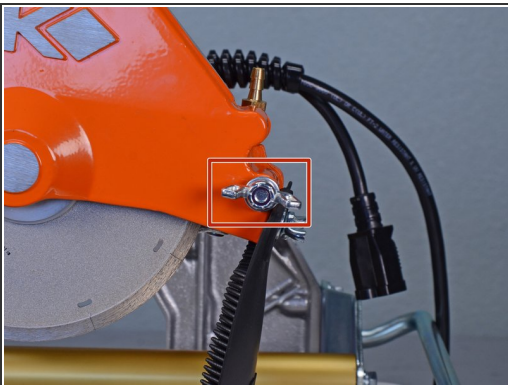


### Step 3



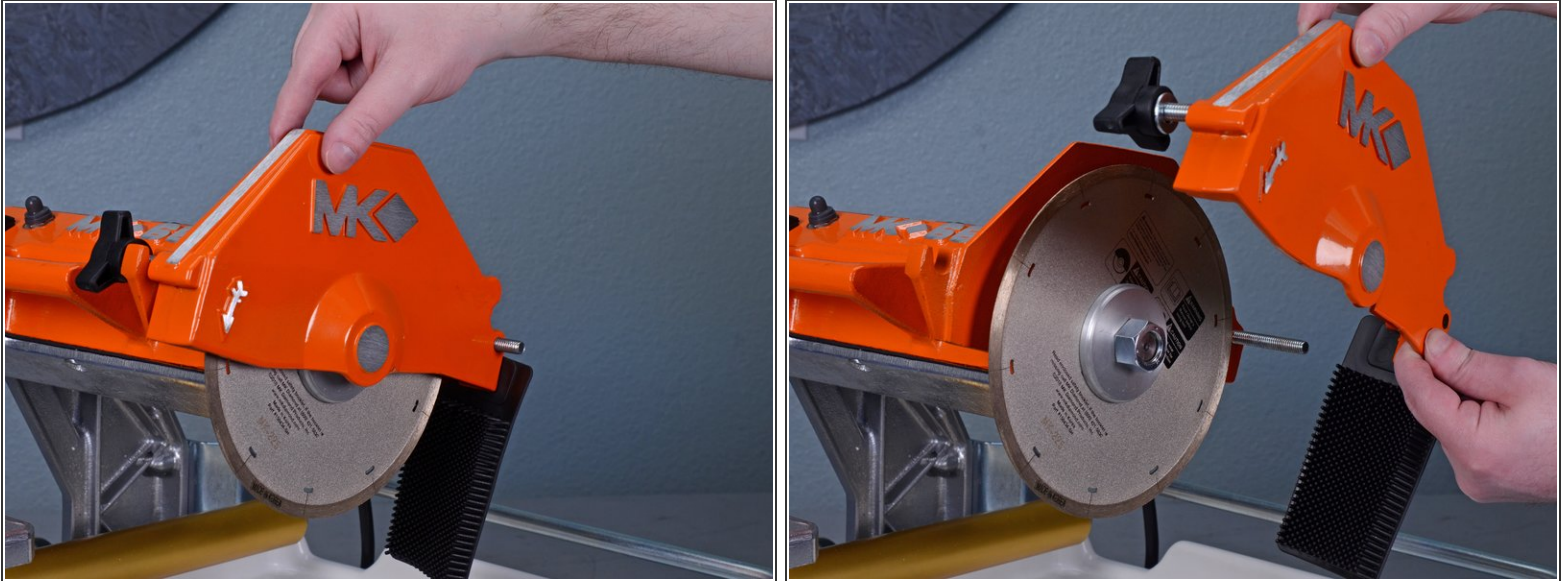
- Loosen the plastic knob holding the blade cover in place.

### Step 4



- Loosen the wing nut on the blade cover pivot shaft.
- Remove the wing nut and accompanying washer.

## Step 5



- Pivot the blade cover up and pull it off the shaft.

## Step 6 — Blade



- Insert the provided spanner wrench into one of the four tightening holes on the inner flange behind the blade.
- Use the the provided nut wrench to loosen the hex nut while providing counterforce with the spanner wrench.



## Step 7



- Remove the hex nut.
- Remove the outer flange.

## Step 8



- Remove the cutting blade.
  - ⚠ The blade can be sharp, so handle with care.

To reassemble your device, follow these instructions in reverse order.