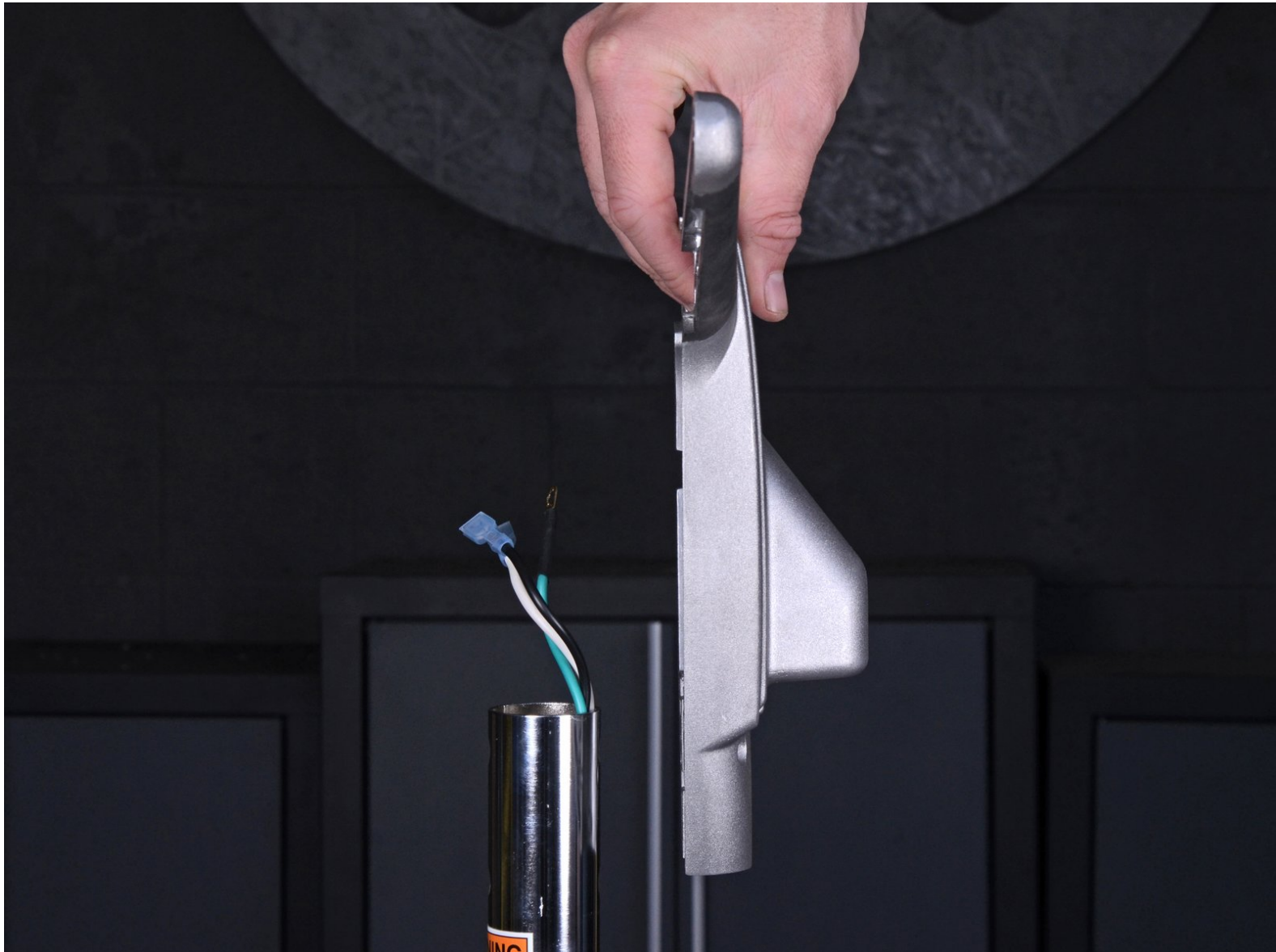




# American Sanders EZSand Orbital Sander 07163A 2012 Handle Replacement

Replace a broken handle on your American Sanders EZSand Orbital Sander 07163A 2012.

Written By: Miles Robinson



## INTRODUCTION

This guide shows how to remove and replace the handle on the American Sanders EZSand Orbital Sander 07163A.



### TOOLS:

- [3/16" Hex Key](#) (1)
- [7/8" Wrench](#) (1)
- [4 mm Hex Key](#) (1)



### PARTS:

- [Clarke Interlock Asm 10687A](#) (1)
- [Clarke Handle Front Cfp 21074A](#) (1)
- [Clarke Handle Rear Cfp 21075A](#) (1)

## Step 1 — Separate the handle



- ⚠ Before you begin, make sure the sander is turned off and unplugged.
- Use a 3/16" hex key or driver bit to remove the six 23.4 mm-long screws holding the two halves of the handle enclosure together.

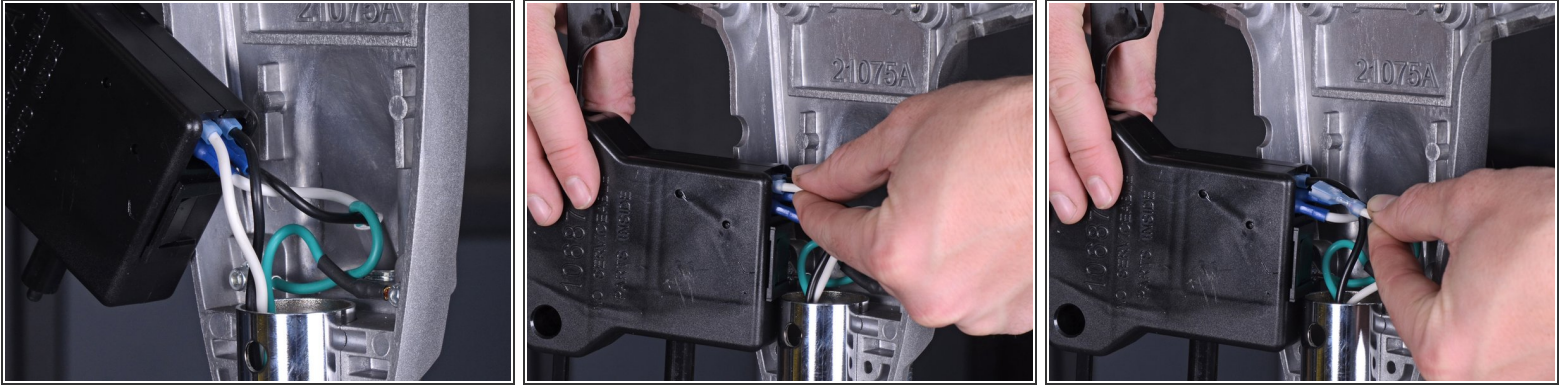
## Step 2



- ⓘ The rear half of the enclosure is bolted to the handle support, so the front half will be removed first.
- Pull the front half of the enclosure straight away from the rear half to separate the enclosure.
- ⓘ If the interlock assembly comes out with the front half of the enclosure, detach it and place it back into the rear half.
- Remove the front half of the handle enclosure.



### Step 3 — Unplug the interlock assembly



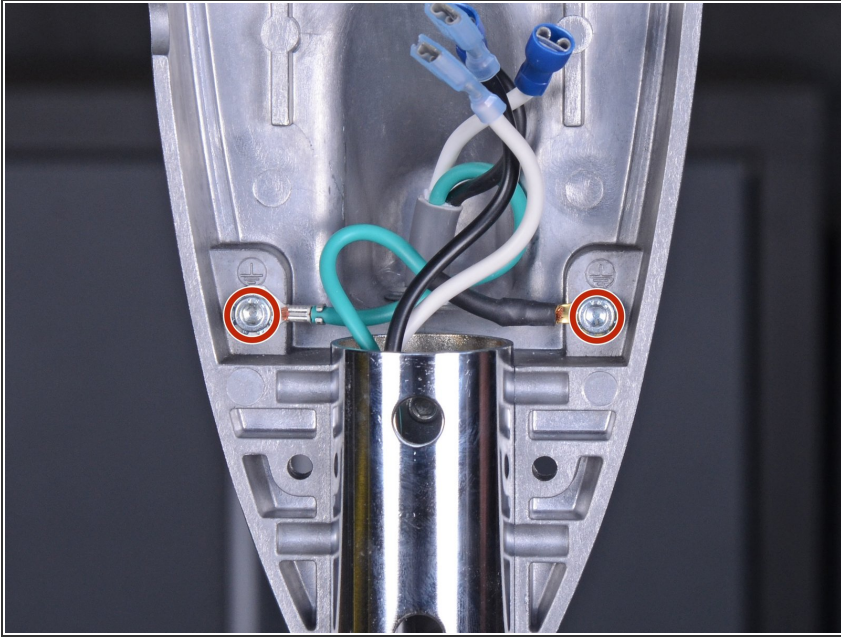
- Pull the wires connected to the interlock assembly straight out of their connectors.
- ① Keep track of where each wire connects on the interlock assembly.

### Step 4 — Remove the interlock assembly



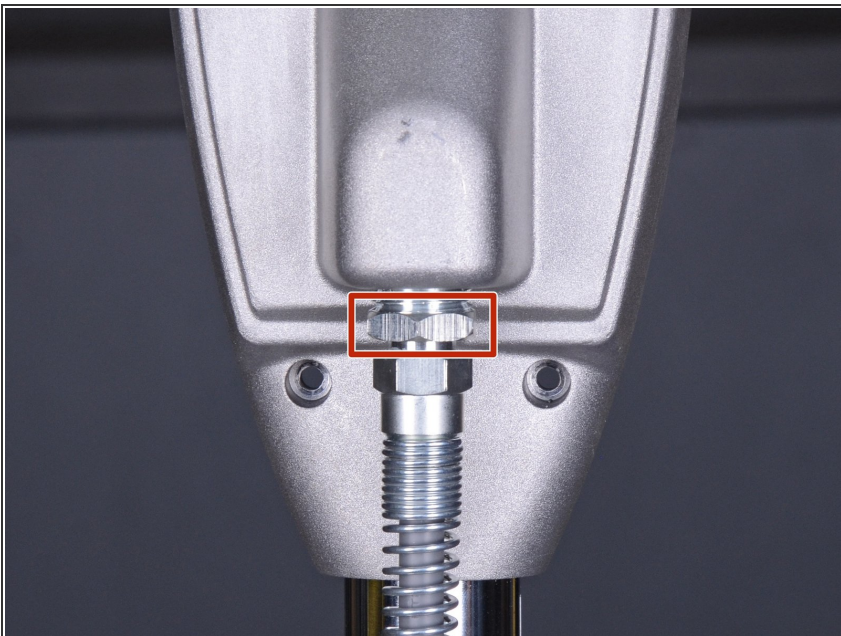
- After all wires are disconnected from the interlock assembly, remove the interlock assembly from the handle.

## Step 5 — Remove the power cord



- Use a 4 mm hex key to remove the two 13.8 mm-long screws securing the green ground wires to the handle enclosure.
- ⓘ These screws have lock washers on them. Be sure to retain the washers for reinstallation.

## Step 6



- Use a 7/8" wrench to loosen the coupling securing the power cord to the handle enclosure.

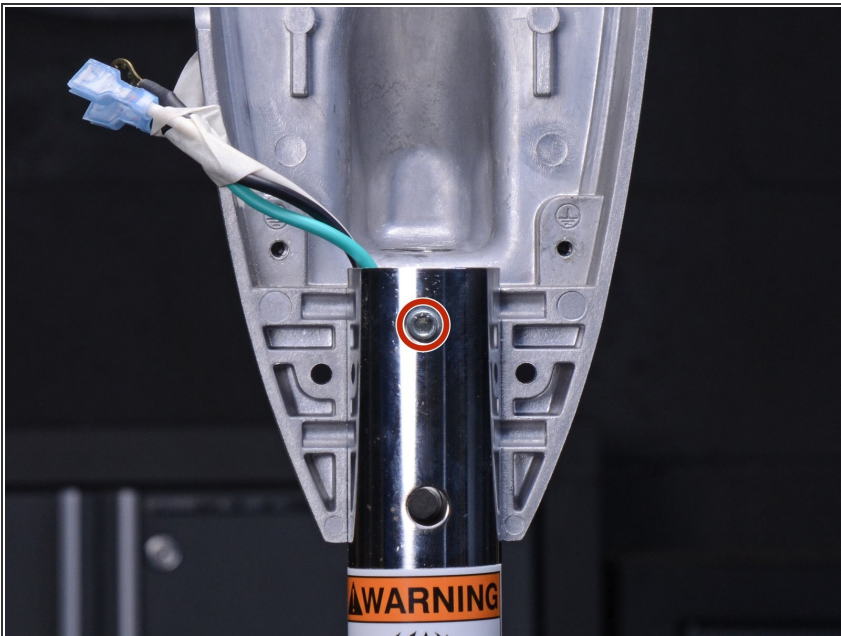


## Step 7



- Pull the power cord straight down, out of the handle.
- ⓘ To avoid damaging the wires, remove the power cord slowly and make sure the wires don't snag on anything as they come out.

## Step 8 — Remove the rear handle enclosure



- Use a 3/16" hex key or driver bit to remove the 13.8 mm-long screw securing the rear half of the handle enclosure to the handle tube.
- ⓘ This screw has a washer. Be sure to retain it for reinstallation.

## Step 9



- Remove the rear half of the handle assembly.

To reassemble your device, follow these instructions in reverse order.