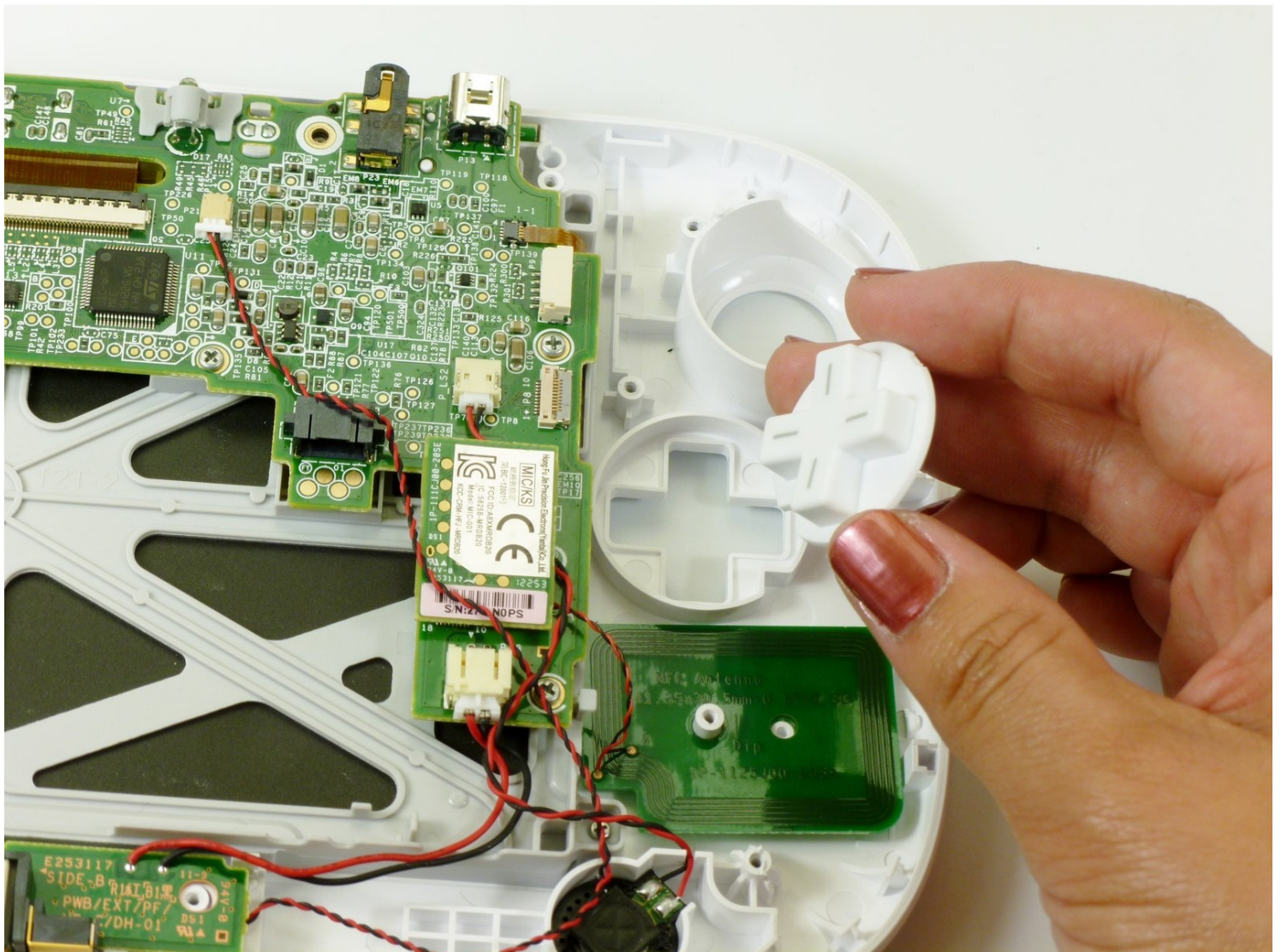




Nintendo Wii U GamePad Directional Pad Buttons Replacement

Use this guide to replace the directional pad...

Written By: Kim Arre



INTRODUCTION

Use this guide to replace the directional pad buttons on your Nintendo Wii U GamePad.

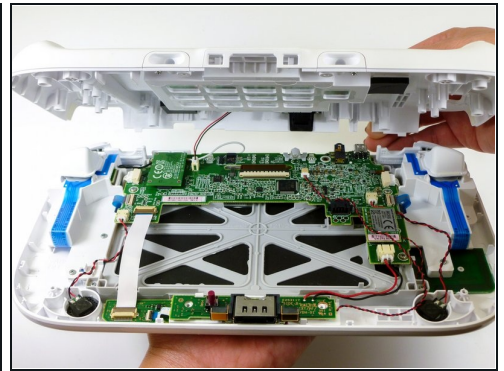
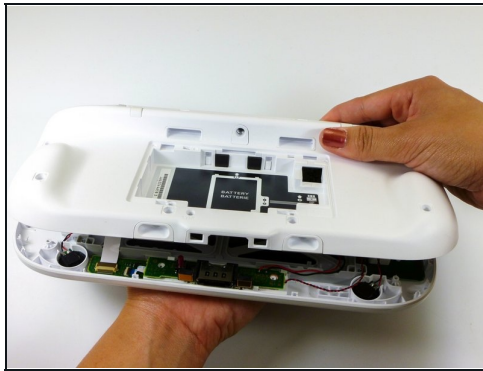
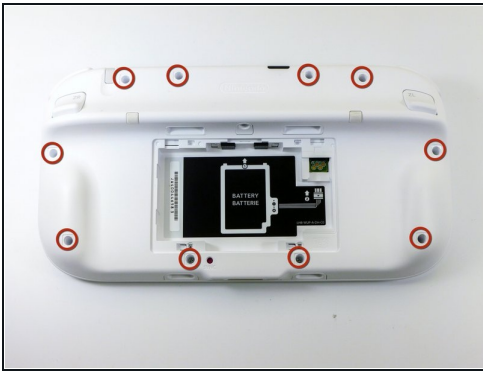
TOOLS:

Phillips #00 Screwdriver (1)
Tri-point Y0 Screwdriver (1)
Y1 Tri-point Screwdriver (1)

PARTS:

Nintendo Wii U GamePad D-Pad Flex Cable (1)

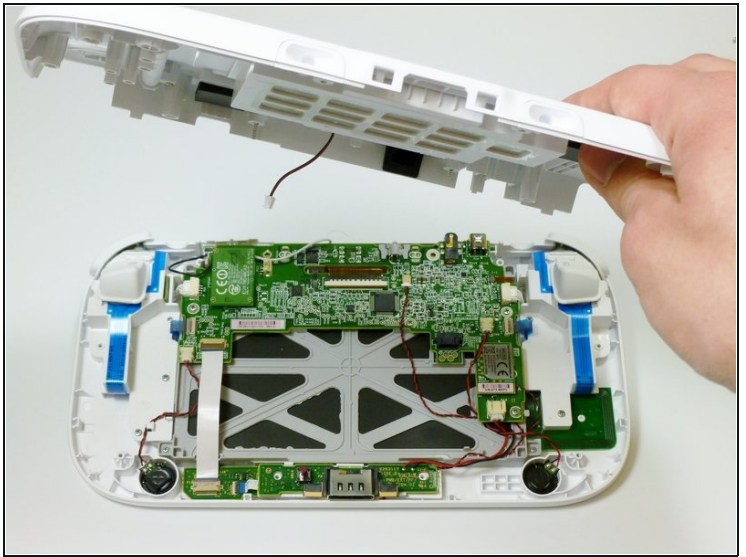
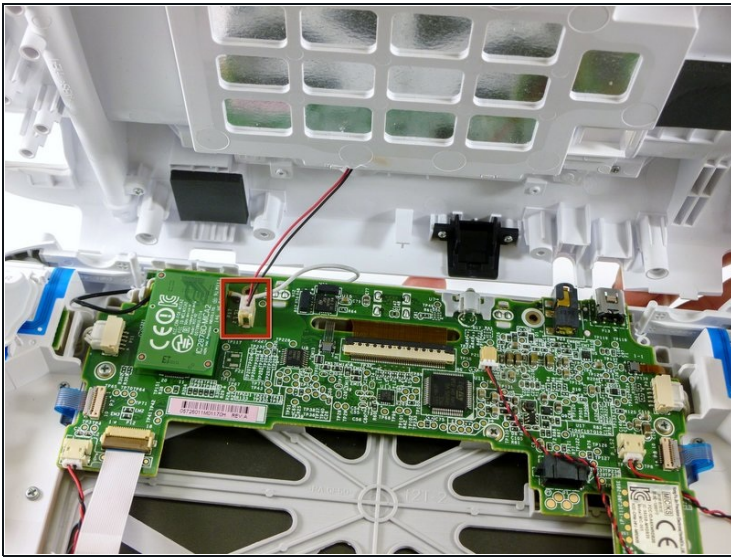
Step 1 — Outer Case



- Remove the ten 8.9mm Tri-wing Y1 screws hidden underneath square stickers.
- Lift up the back plate.

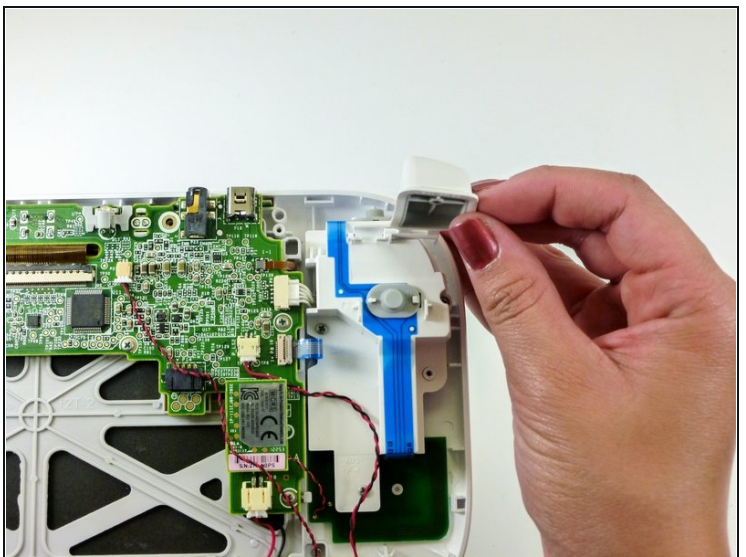
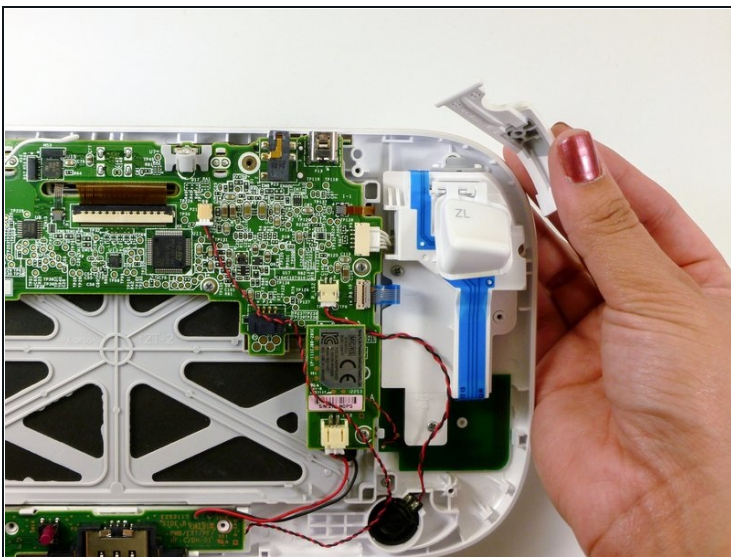
 The back plate is still connected by a cable to the motherboard.

Step 2



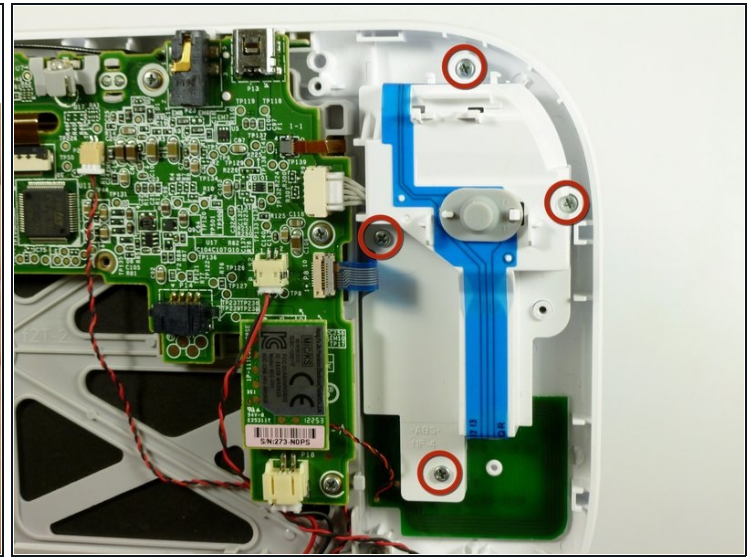
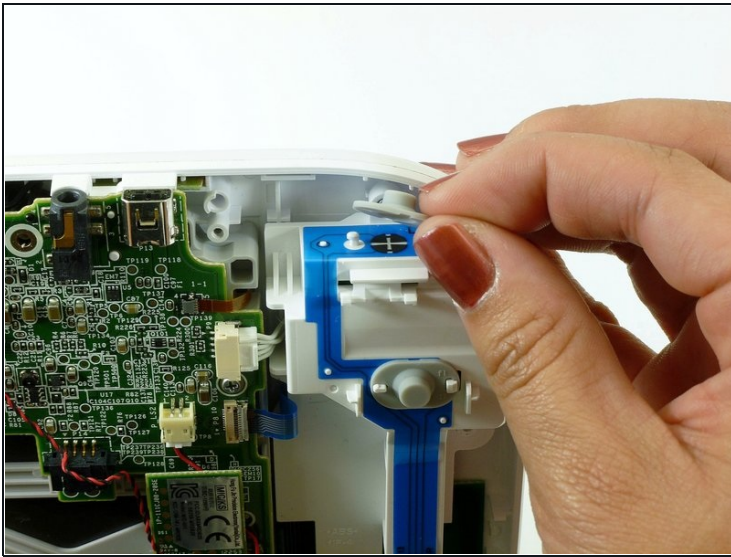
- Unplug the connector that connects the back plate to the motherboard.
- Remove the back plate.

Step 3 — Analog Stick



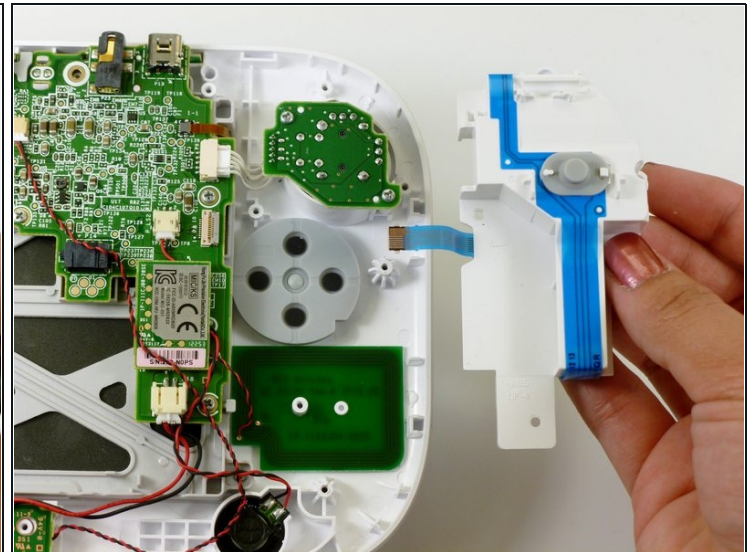
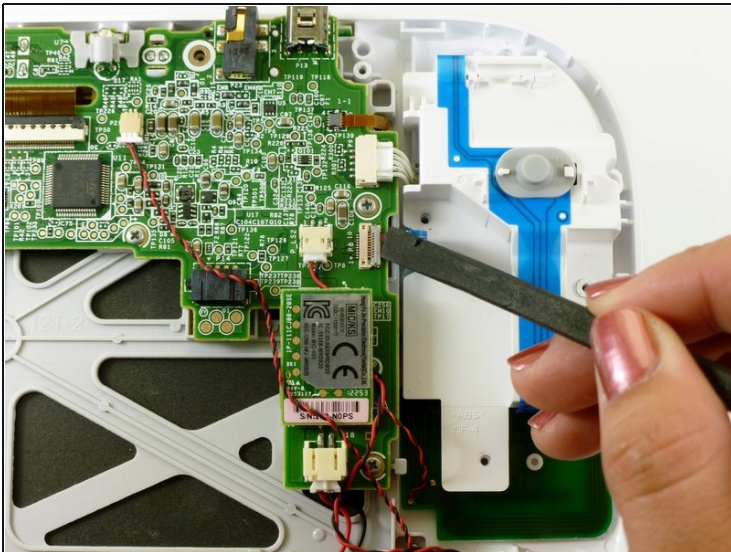
- Take out the left and right shoulder buttons in the upper corners.
- Remove the ZR and ZL trigger buttons by lifting up and sliding outward.

Step 4



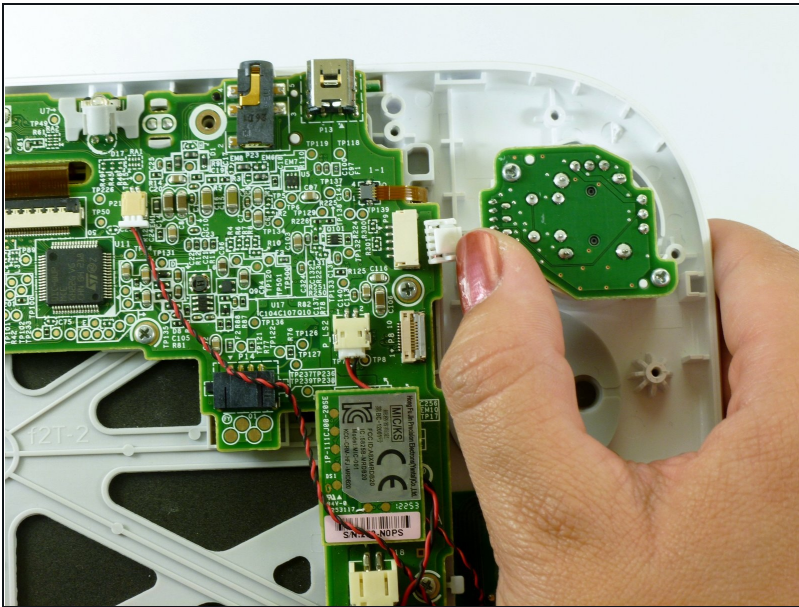
- Remove the top rubber cover by pulling it off of its mounts to access one of the mounting screws.
- Remove the four 5.2mm Phillips #0 screws.

Step 5



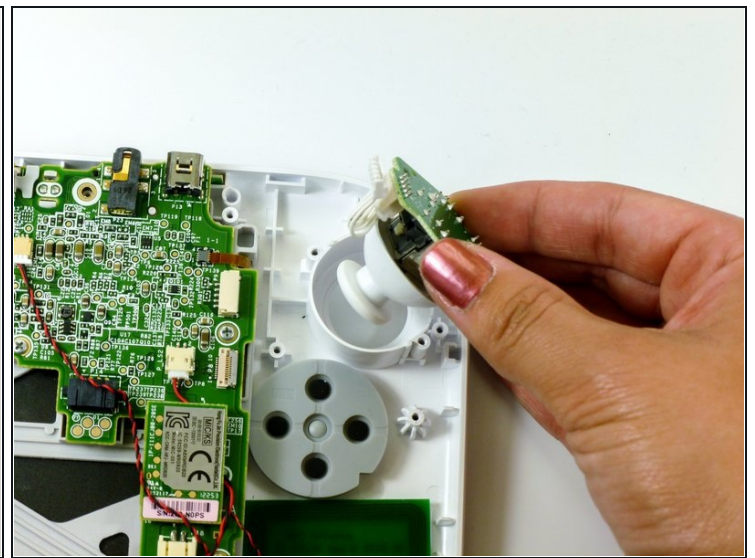
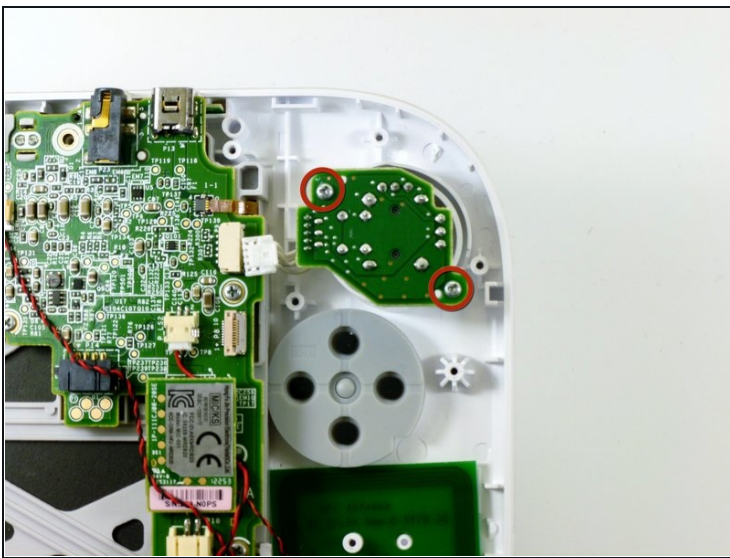
- Use a spudger to lift the tab which releases the blue ribbon cable.
- Remove the analog stick and button cover.

Step 6



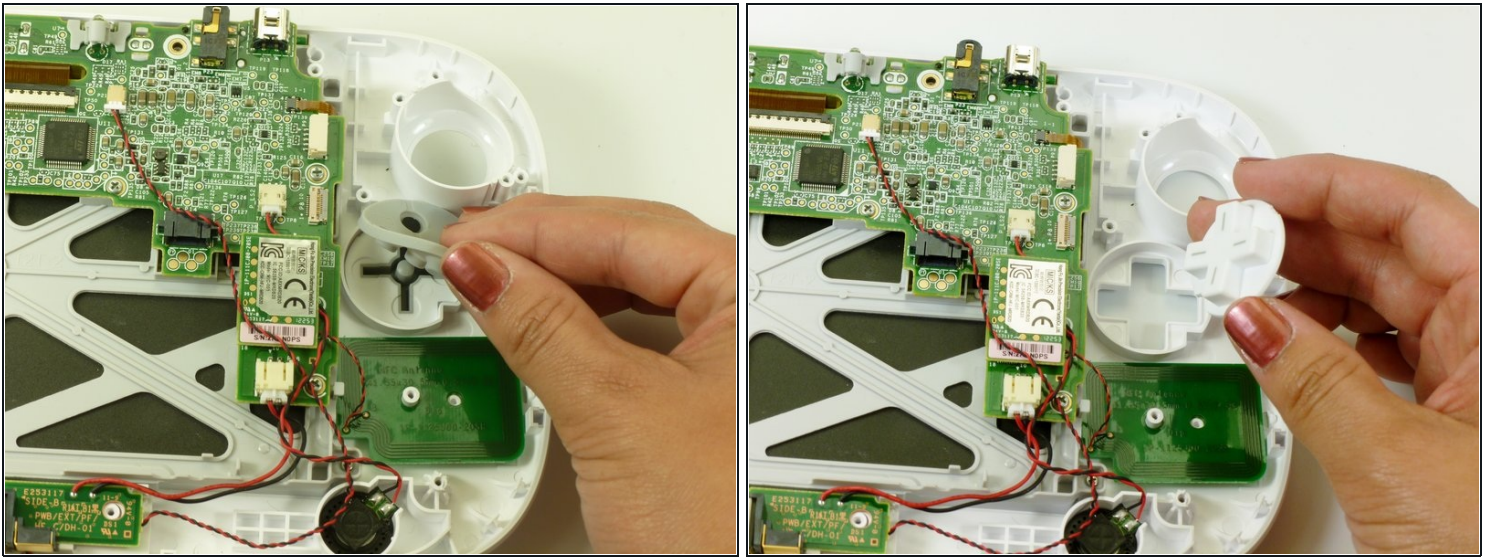
- Use your thumb and push the connector towards the rightmost edge to disconnect the analog stick cable connector.

Step 7



- Remove the two 9.0mm Tri-wing Y0 screws.
- Lift out the analog stick.

Step 8 — Directional Pad Buttons



- Lift up and remove the rubber cover for the directional pad.
- Remove the directional pad buttons.

To reassemble your device, follow these instructions in reverse order.