



Black and Decker 9074 Type 4 Battery Replacement

This will show how to replace the battery for the Black & Decker 3.6V screwdriver 9074 type 4

Written By: oldturkey03



INTRODUCTION

I only like to use electric screwdrivers for the assembly of larger screws from larger components. This one has been used on many TV's and Radio's and just did not hold a charge any longer. I decided to get a new battery and replace the old one. Fairly easy and straight forward task. The biggest problem with this job was to find a new battery.



TOOLS:

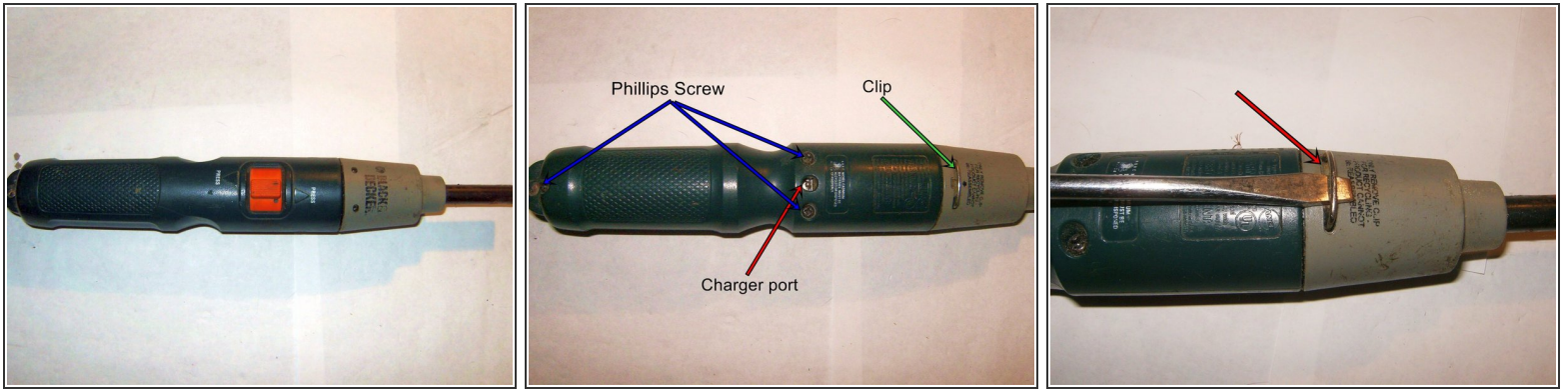
- [Large Needle Nose Pliers](#) (1)
- [Phillips #1 Screwdriver](#) (1)
- [Flathead 3/32" or 2.5 mm Screwdriver](#) (1)



PARTS:

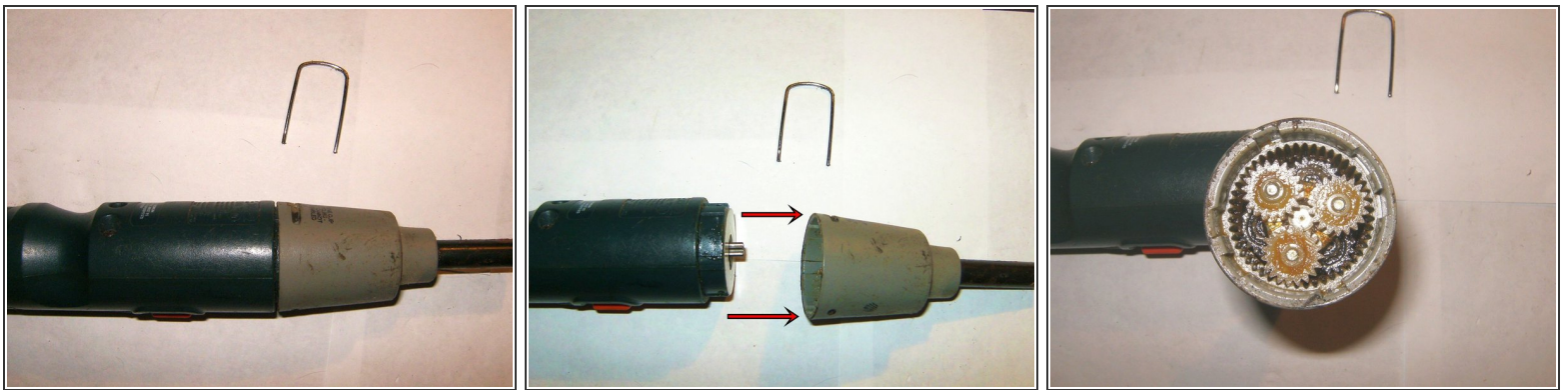
- [148412-00 NiCad battery](#) (1)

Step 1 — Battery



- Black & Decker 9074 type 4 screwdriver that no longer holds a charge.
- Main pieces to work on for disassembly
- Remove the clip that holds the transmission to the body. Insert a 6mm (1/4") flat tip screwdriver underneath the clip, gently move clip upward.

Step 2



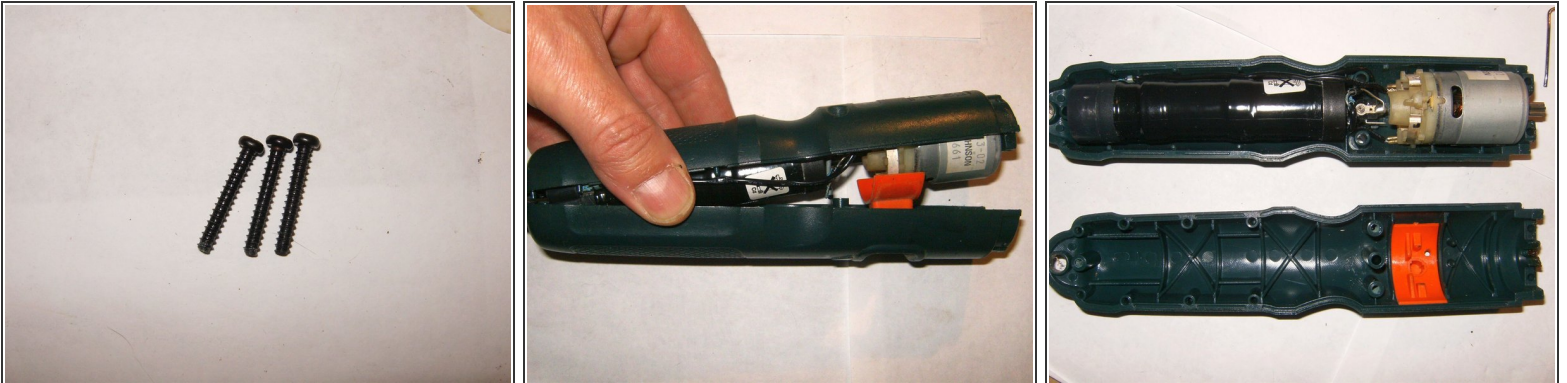
- Once the clip is removed the transmission can be pulled off the body.
- Move transmission away from body
- Planetary gears inside the transmission look clean and complete.

Step 3



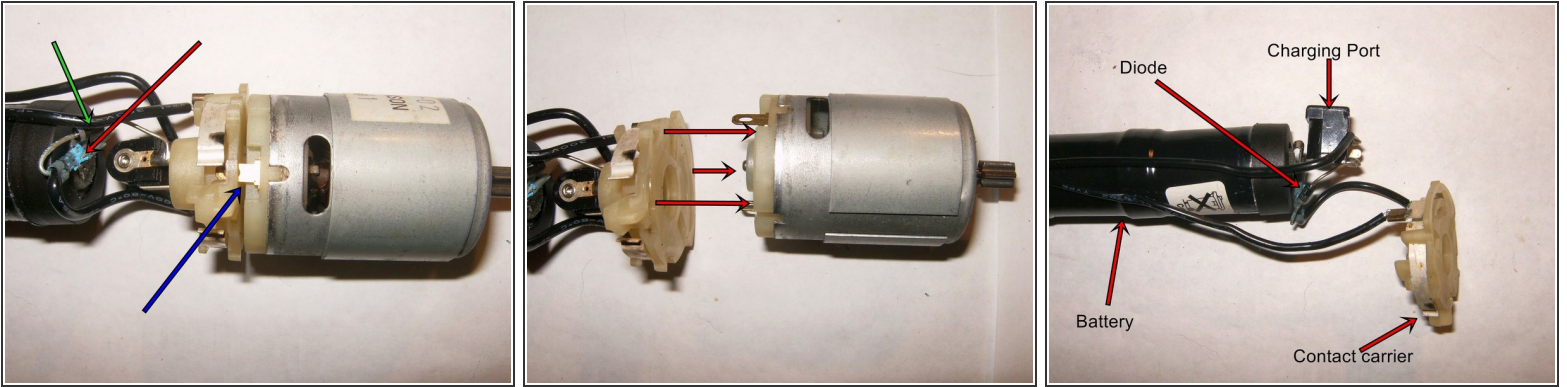
- Remove plastic washer that is situated between the transmission and the body.
- These are the three screws that need to be removed.
- Use a Phillips #1 screwdriver on those three screws

Step 4



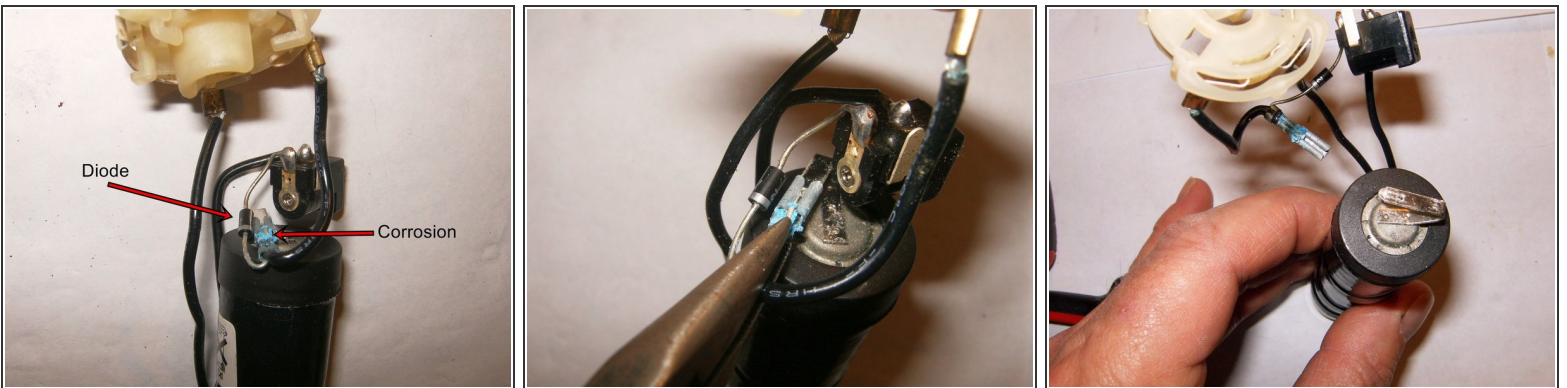
- Three Phillips screws 7/8" long removed.
- Separate the two body halves.
- Battery, charging port and motor are clearly seen. These are just laid into the bottom half and can be easily removed.

Step 5



- The motor is held to the contact carrier by two elongated contacts. Clearly visible is a charging Diode as we as plenty of corrosion on the positive contact.
- Remove motor by simply pulling it away from the contact carrier
- View of the wiring with motor removed.

Step 6



- Top view of the wiring.
- Use small needle nose pliers to remove cable connector from positive contact of the battery.
- Positive wiring removed from battery.

Step 7



- Remove the negative (bottom) wire from battery. Gently pull it off the cable connector. Hold the wire close to the connector for removal.
- All wiring separated from the battery. It is now ready to be replaced.
- These are all the parts disassembled for this job.

To reassemble your device, follow these instructions in reverse order.