



MacBook Pro 13" Retina Display Late 2012

AirPort Board Assembly Replacement

Prereq for removing the I/O board.

Written By: Walter Galan



INTRODUCTION

Prereq for removing the I/O board.



TOOLS:

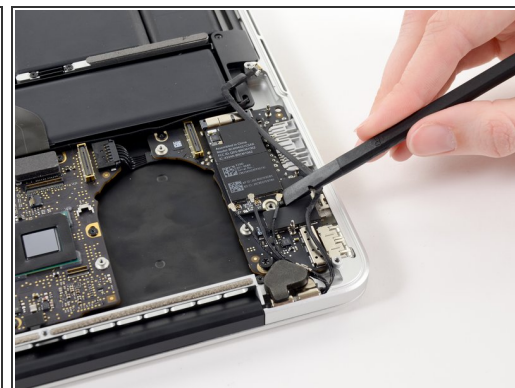
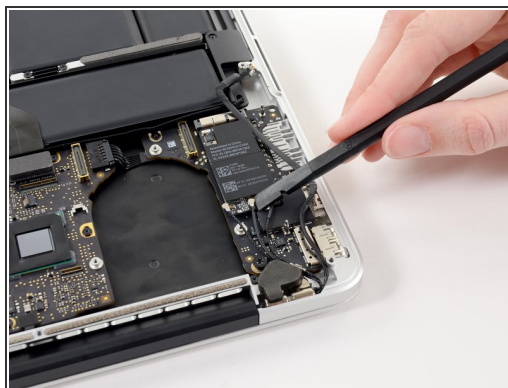
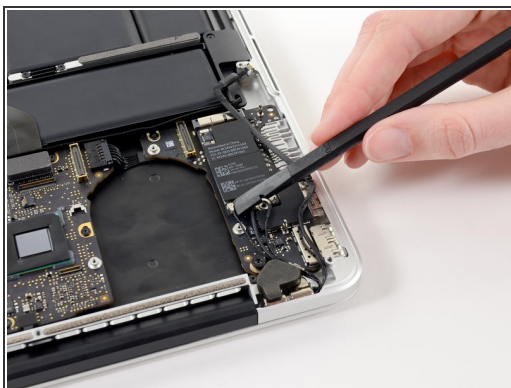
- [T5 Torx Screwdriver](#) (1)
 - [Spudger](#) (1)
-

Step 1 — AirPort Board Assembly



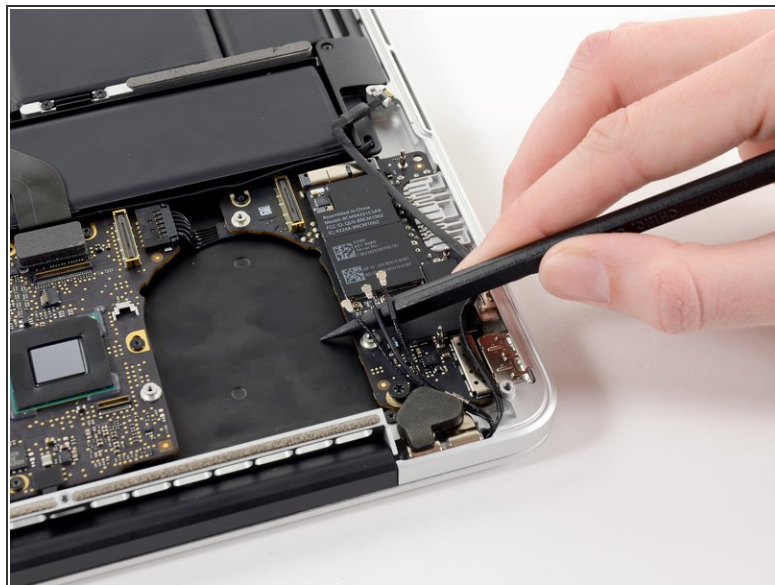
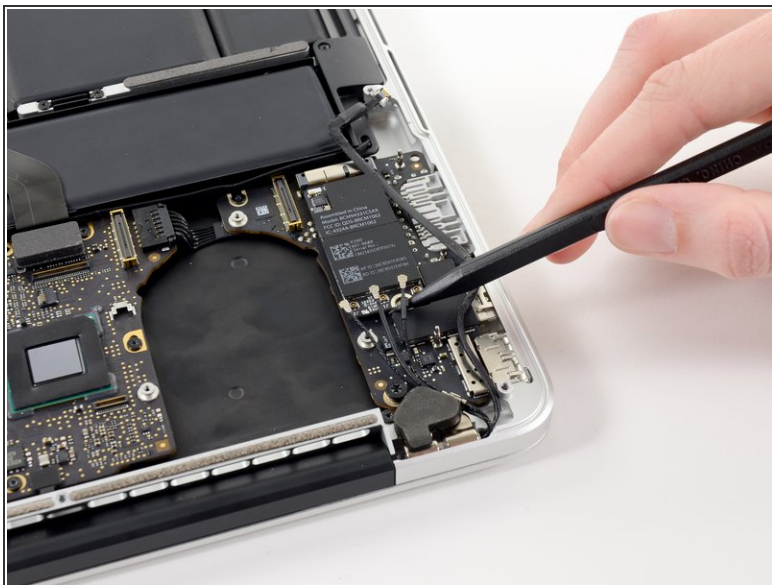
- Remove the single 2.7 mm T5 Torx screw securing the AirPort board to the I/O board.

Step 2



- Use the flat end of a spudger to pry and disconnect the three antenna cable connectors from the AirPort board.
- ☛ The three cables are coded with black sleeves of different lengths. During reassembly:
 - Connect the long-sleeved cable to the center socket.
 - The short-sleeved cable connects next to the screw.
 - The remaining cable has no sleeve, and connects in the last empty socket, next to the fan.

Step 3



- Move the antenna cables aside, clear of the AirPort board.

Step 4



- Pull the AirPort board straight out of its socket on the I/O board.

To reassemble your device, follow these instructions in reverse order.