



GPD Win Battery Replacement

Follow this guide to learn how to replace the...

Written By: Michael d Hinsberger



INTRODUCTION

Follow this guide to learn how to replace the battery of your GPD Win. Be sure to power off your device prior to starting the guide.



TOOLS:

- [iFixit Opening Tool](#) (1)
 - [64 Bit Driver Kit](#) (1)
 - [Rextin 50M Meters 10MM 3M Double Sided Tape Adhesive Stronger Stick](#) (1)
-

Step 1 — Battery



- Shut down your GPD Win.

Step 2



- Remove SD card and duct cover.

Step 3



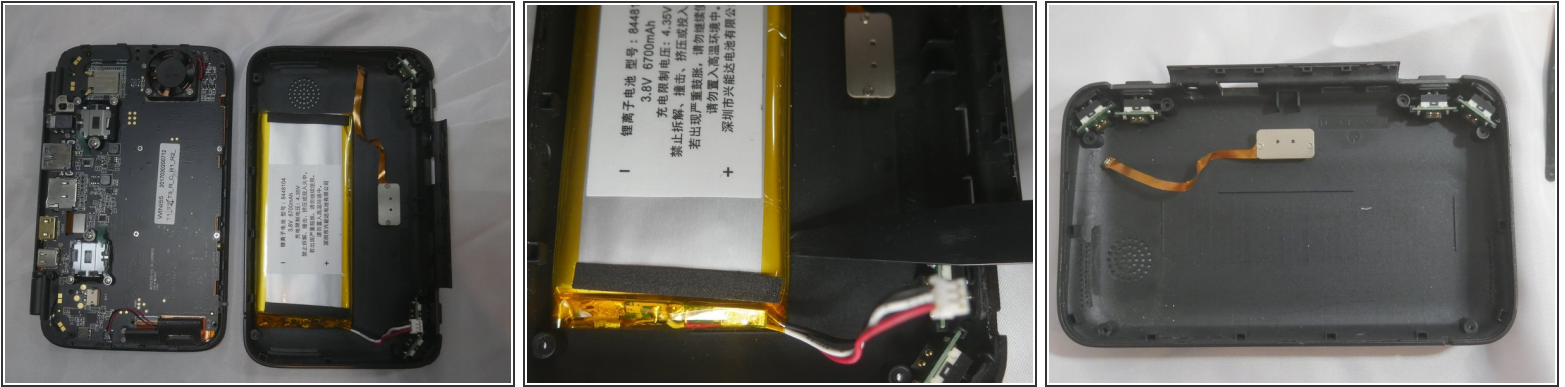
- Remove the six PH #00 screws on the back of the GPD.

Step 4



- Carefully insert the pry tool between the keyboard and case.
- Move the tool around the edge until every clip is released.
- Carefully lift the back half of the case.
- You'll see a small ribbon connector on the right. Use your pry tool to remove it by lifting up.
- On the right, you'll see another white connector going to the battery. Use the pry tool and pull back on the connector to release it.

Step 5



- Separate the two halves of the device.
- Use the pry tool and slowly and carefully separate the adhesive from the back of the case.
- Remove old battery.

Step 6



- Use two to three strips of the double sided tape and apply it to the back of the battery.
- Line up the battery with the lines on the case and the connector on the right.

To reassemble your device, follow these instructions in reverse order.

This document was generated on 2023-04-29 04:28:09 AM (MST).

