



# Sony ICF-P26 Antenna Replacement

How to replace the antenna of a Sony ICF-P26 radio.

Written By: Olaloye Thontteh



---

## INTRODUCTION

Use this guide to fix or replace a damaged antenna of a Sony ICF-P26 radio.

The antenna enables radios to get reception for their FM and AM bandwidth. A radio with no antenna or a damaged antenna would have distortion of radio waves .

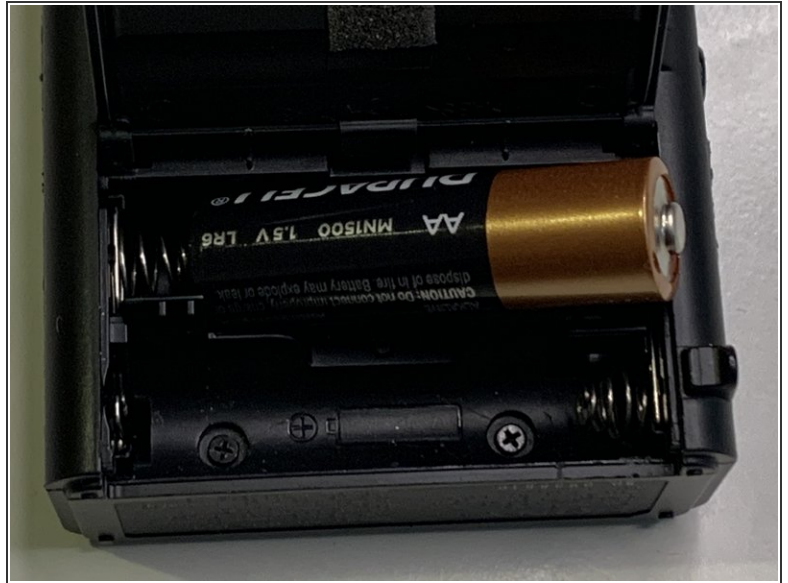
Following these steps would fix the radio reception issues in a short time. There is minimal or no known danger associated with replacing the antenna .



### TOOLS:

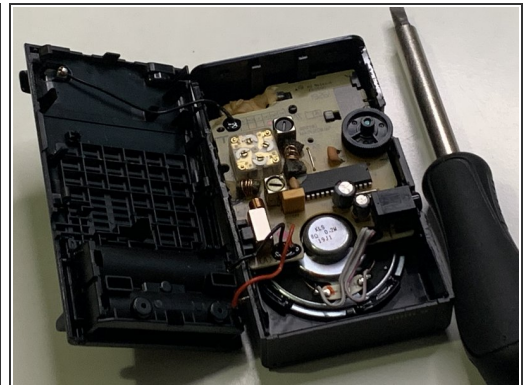
- [Mini Screwdrivers](#) (1)
  - [iFixit Opening Tools](#) (1)
-

## Step 1 — Antenna



- Power off and disconnect the radio from any power source.

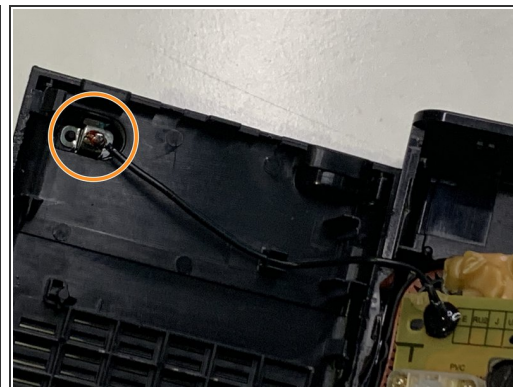
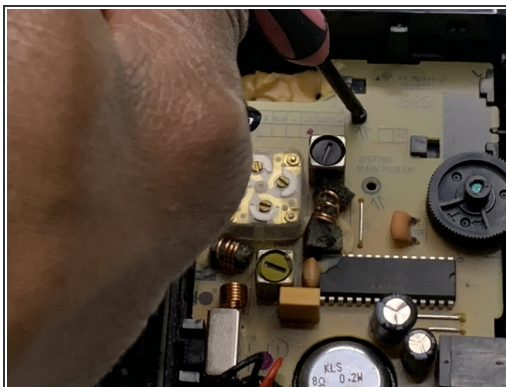
## Step 2



- Use a mini screwdriver to remove the two screws from the battery compartment.
- Gently insert an opening tool where the FM/AM/Off switch is, to force your way up.
- Insert the opening tool in the other side where the volume and the earphone go.
- ⓘ You will hear hinges pop open.

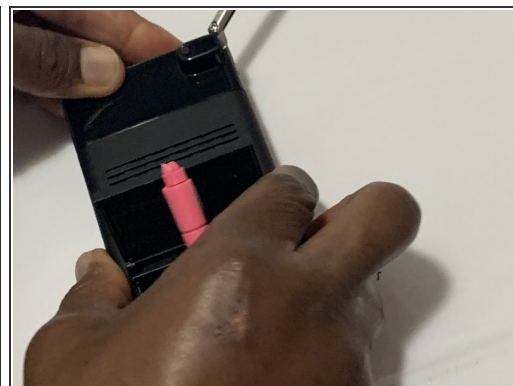
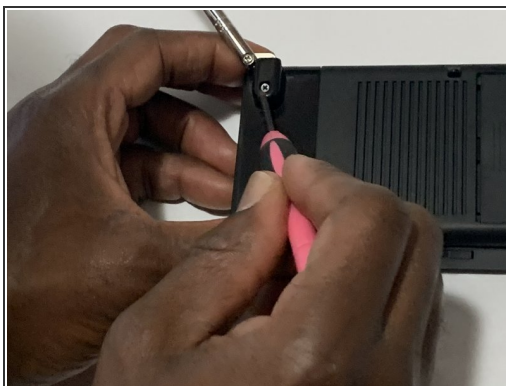
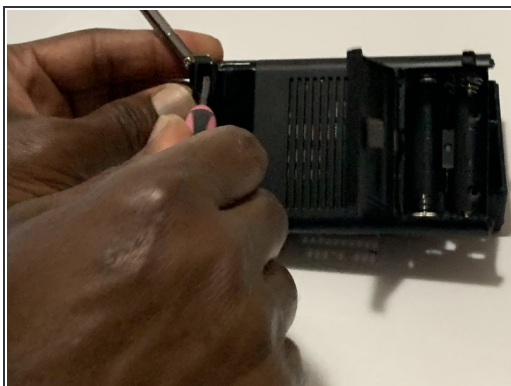


## Step 3



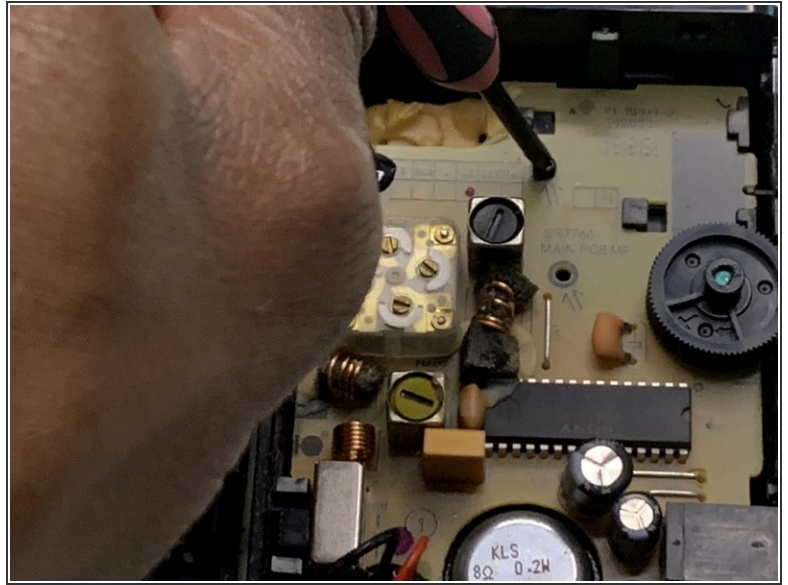
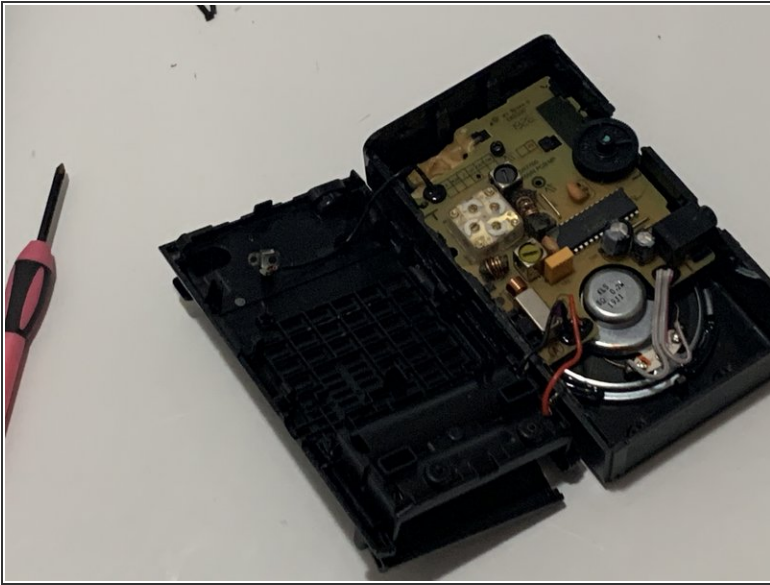
- Use the mini screwdriver to remove the screw holding the motherboard.
- Unscrew the damaged antenna.

## Step 4



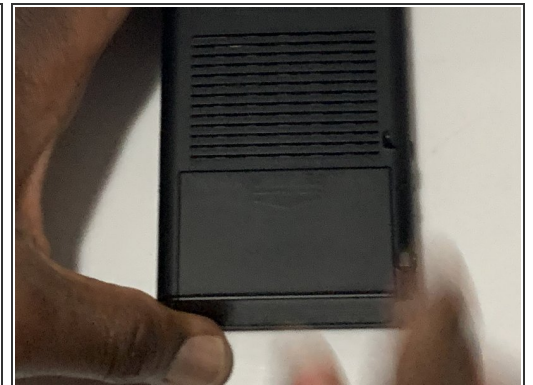
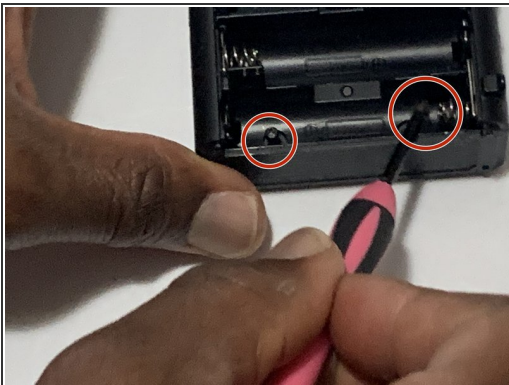
- Use the mini screwdriver to replace the new antenna.

## Step 5



- Use the mini screwdriver to assemble the motherboard.

## Step 6



- Use the mini screwdriver to assemble the cover.
- Insert the batteries.

## Step 7



- Switch on the radio.