



MacBook Pro 13" Retina Display Late 2012 Display Assembly Replacement

Use this guide to replace the display assembly.

Written By: Walter Galan



INTRODUCTION

Use this guide to replace the display assembly.



TOOLS:

MacBook Pro and Air 5-Point Pentalobe Screwdriver (1)

iFixit Opening Tool (1)

Spudger (1)

T5 Torx Screwdriver (1)

T6 Torx Screwdriver (1)

TR8 Torx Security Screwdriver (1)

Tweezers (1)



PARTS:

MacBook Pro 13" Retina (Late 2012-Early 2013) Display Assembly (1)

Step 1 — Lower Case



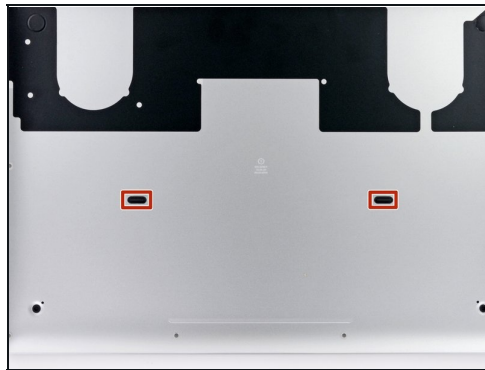
- Remove the following ten screws securing the lower case to the upper case:
 - Two 2.3 mm P5 Pentalobe screws
 - Eight 3.0 mm P5 Pentalobe screws
- ☑ Throughout this repair, [keep track of each screw](#) and make sure it goes back exactly where it came from to avoid damaging your device.

Step 2



- Wedge your fingers between the upper case and the lower case.
- Gently pull the lower case away from the upper case.
- Remove the lower case and set it aside.

Step 3



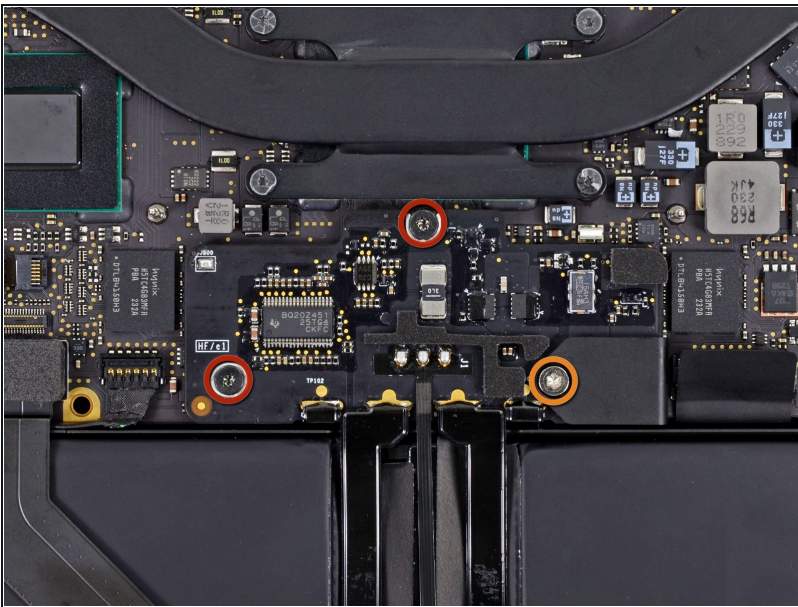
- ★ During reassembly, gently push down the center of the lower case to reattach the two plastic clips.
- The lower case is connected to the upper case at the center, with two plastic clips.

Step 4 — Battery Connector



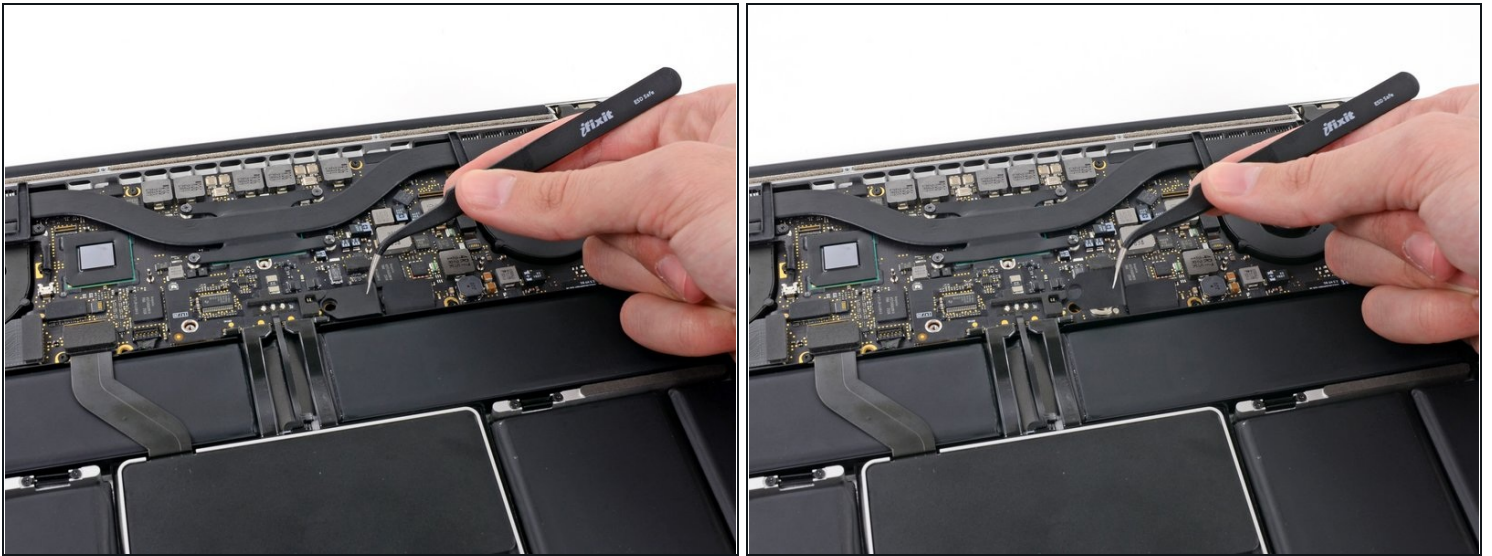
- Remove the plastic cover adhered to the battery contact board.

Step 5



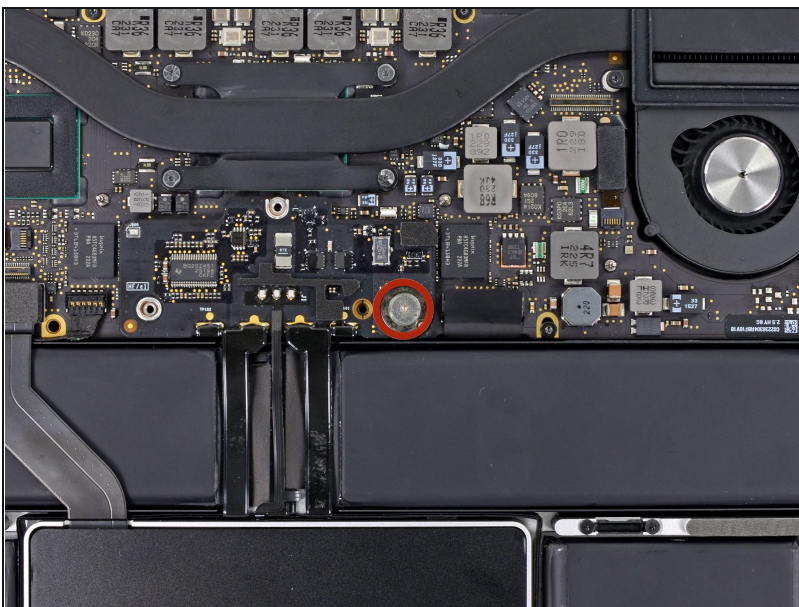
- Remove the following screws securing the battery connector board to the logic board:
 - Two 2.8 mm T6 Torx screws
 - One 7.0 mm T6 Torx shouldered screw

Step 6



- Use [tweezers](#) to remove the small plastic cover located near the bottom right of the battery connector board.

Step 7



- Remove the wide head 6.4 mm T6 Torx screw securing the battery connector to the logic board assembly.

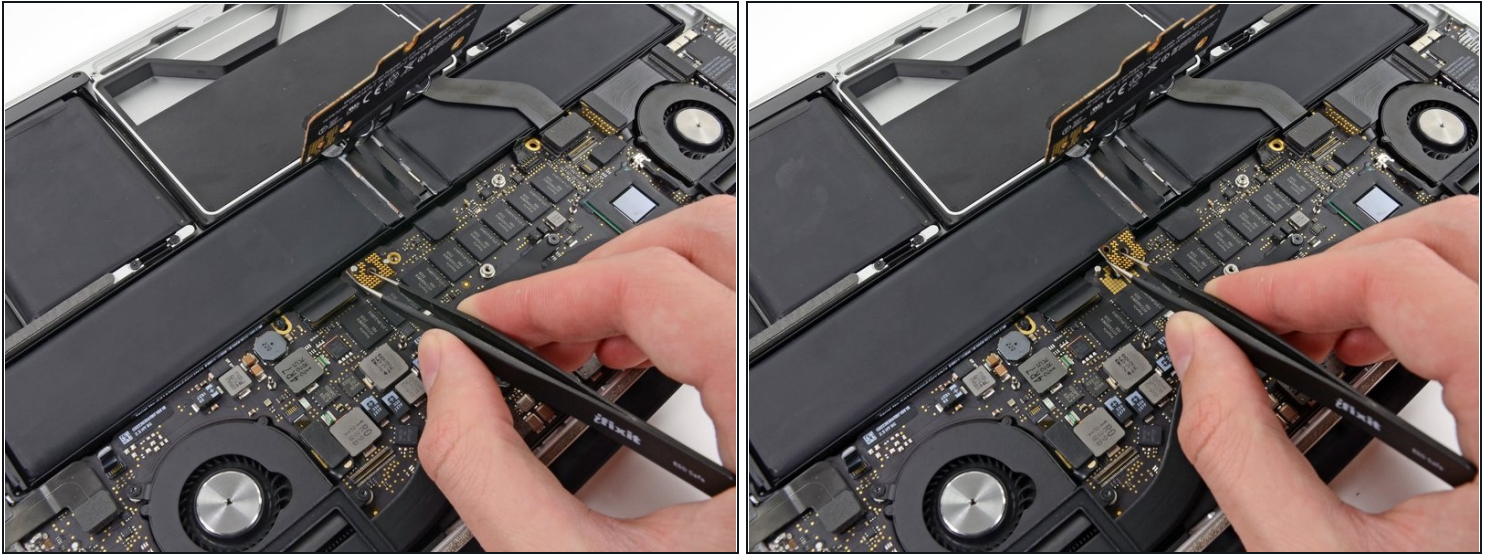
Step 8



- Carefully lift the battery connector board up off the logic board.
- It is recommended to bend the battery cables just slightly, to keep the board suspended up above the logic board and out of the way.

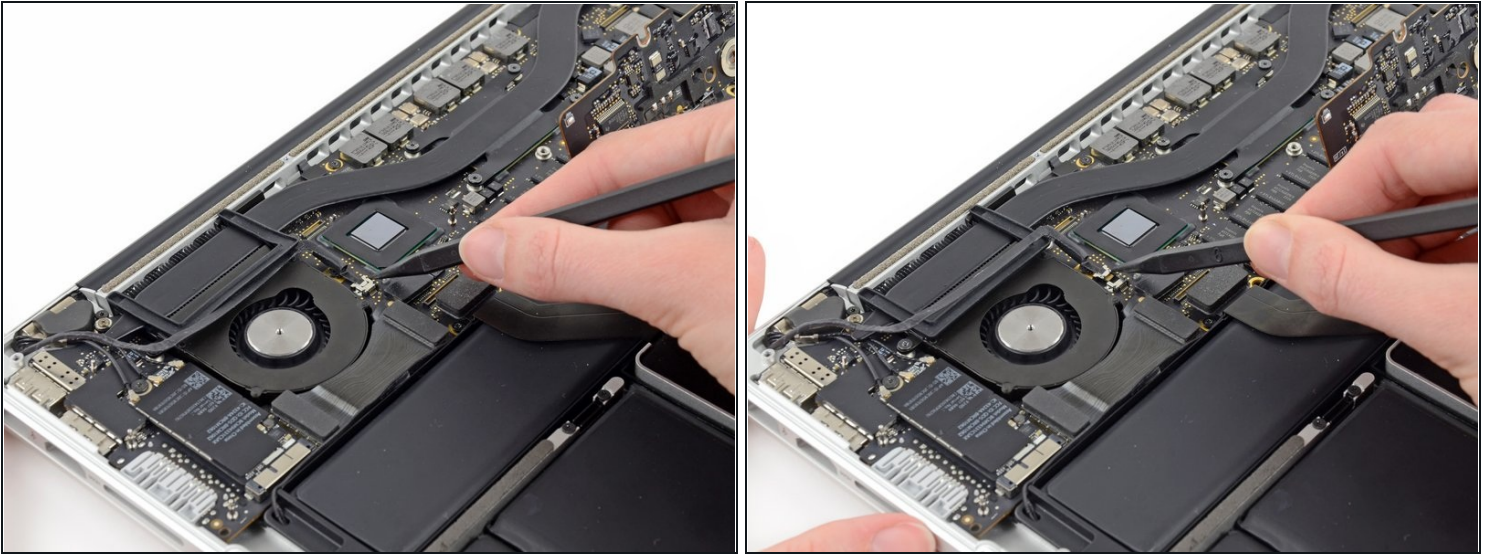
⚠ Do not fold the board completely over, or crease the cables, as this may damage the battery.

Step 9 — Battery Contact Board



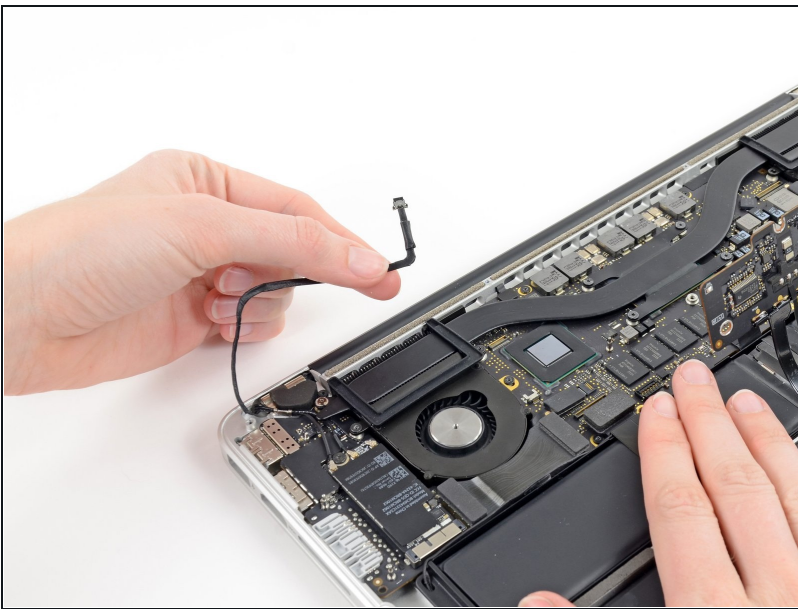
- Grasp the Interposer with [tweezers](#).
 - ① An interposer is the name for an interface that links one electrical connection to another. In this repair, it is the board connecting the battery to logic board.
- Lift the Interposer off the logic board and remove it.
 - ⚠ Removing this board will ensure that the battery remains disconnected throughout your repair, preventing your computer from accidentally powering on. It's also a good idea to take it out so it doesn't fall out unexpectedly.

Step 10 — iSight Camera Cable



- Use the tip of a spudger to push the iSight camera cable connector straight away from its socket on the logic board.
- ⓘ It is recommended to carefully push on both sides of the connector to "walk" it out of its socket.

Step 11



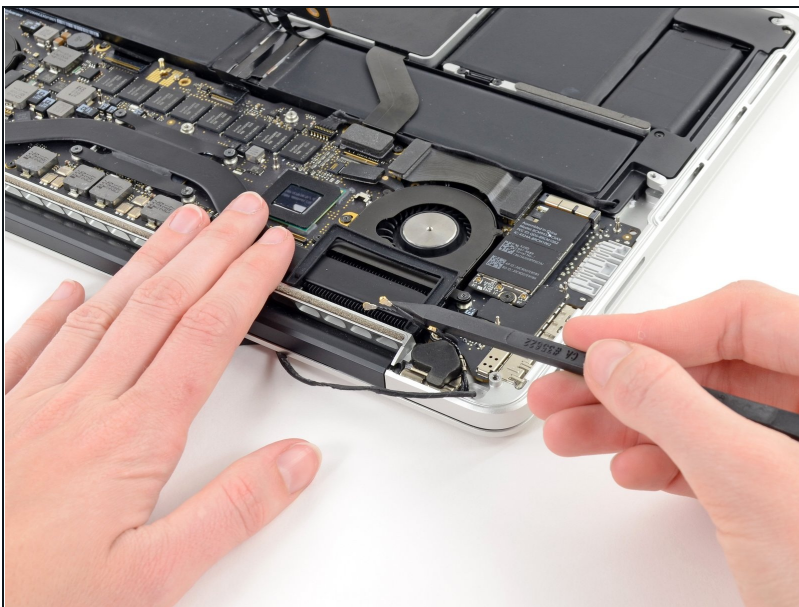
- Move the iSight camera cable aside.

Step 12 — AirPort Board Assembly



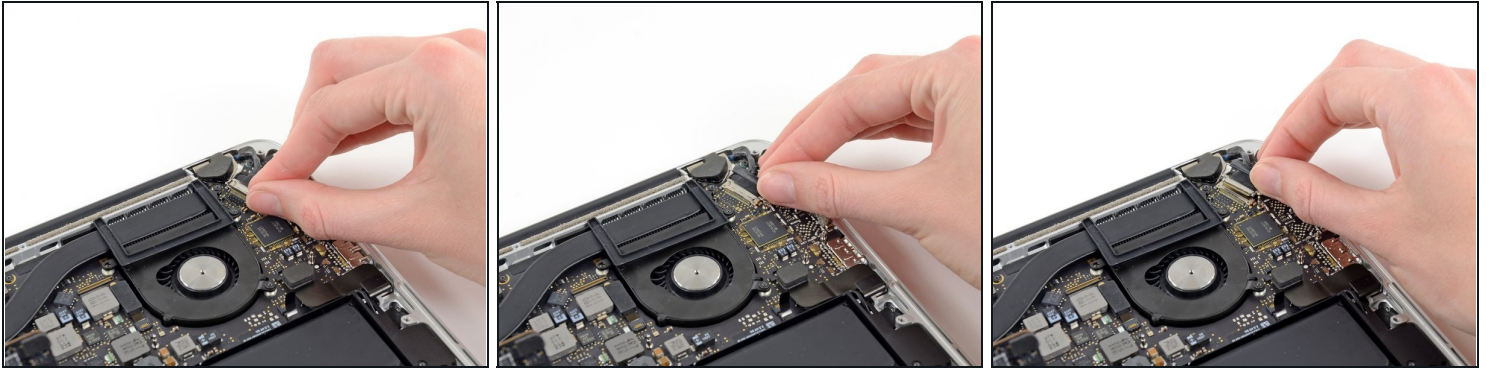
- Use the flat end of a spudger to pry and disconnect the three antenna cable connectors from the AirPort board.
- The three cables are coded with black sleeves of different lengths. During reassembly:
 - Connect the long-sleeved cable to the socket closest to the ports.
 - The short-sleeved cable connects next to the screw.
 - The remaining cable has no sleeve, and connects in the last empty socket, next to the fan.

Step 13



- Move the antenna cables aside, clear of the AirPort board.

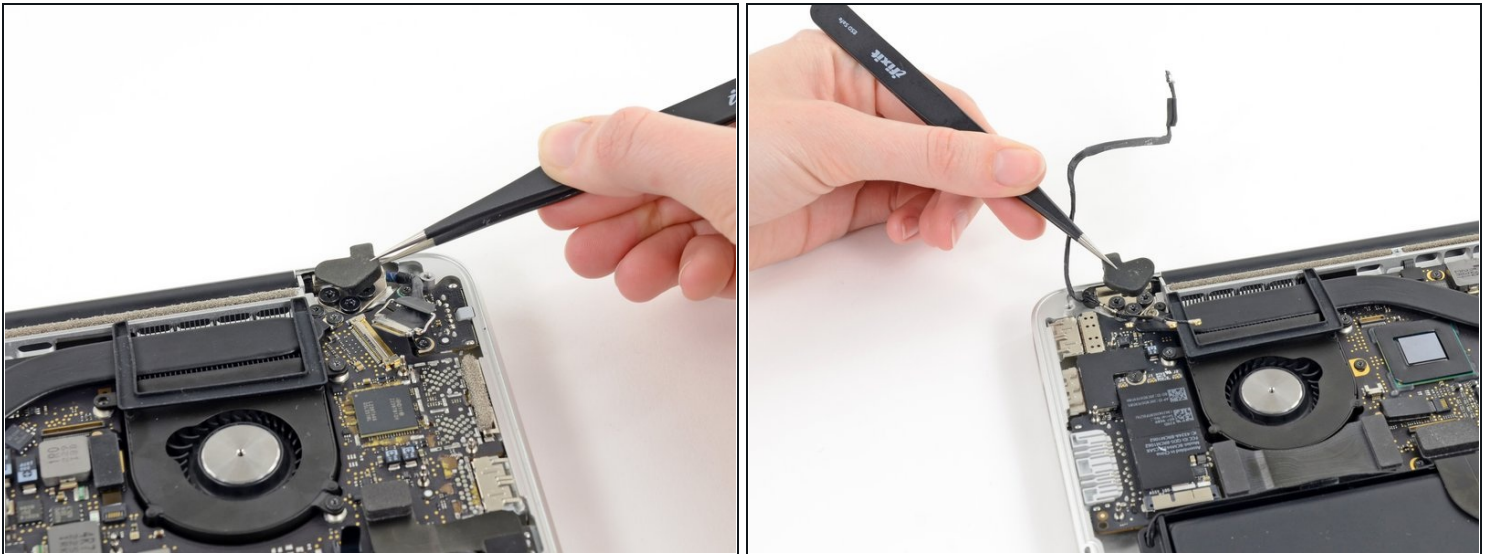
Step 14 — Display Assembly



- Grab the black pull tab secured to the display data cable lock and rotate it toward the DC-In side of the computer.
- Pull the display data cable straight out of its socket on the logic board.

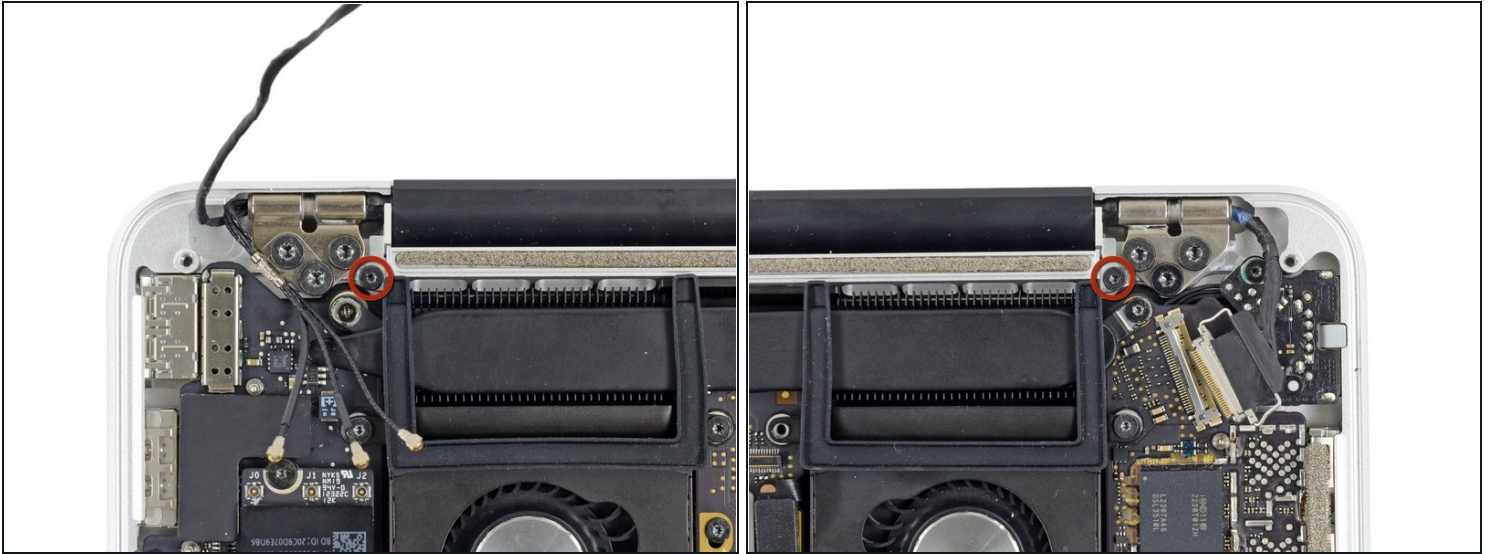
⚠ Do not lift up on the display data cable, as its socket is very fragile. Pull the cable parallel to the face of the logic board.

Step 15



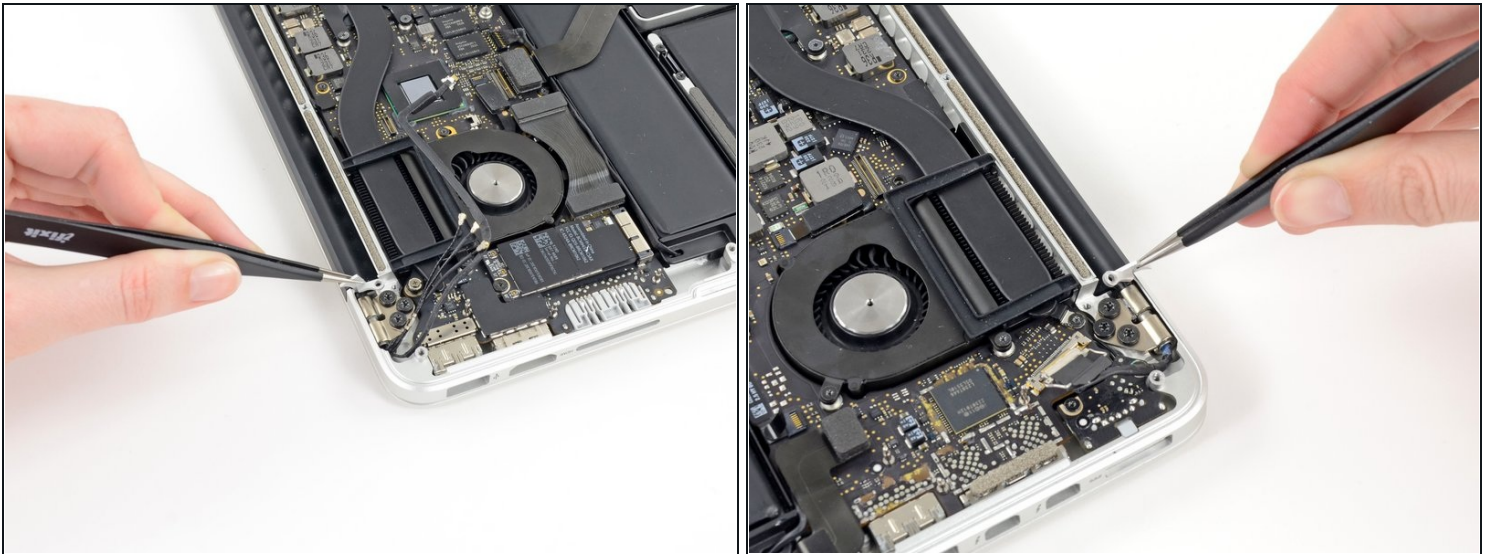
- Use a pair of [tweezers](#) to lift the rubber hinge covers up off the right and left display hinges.

Step 16



- Remove the two 3.1 mm T5 Torx screws securing the aluminum hinge brackets.

Step 17



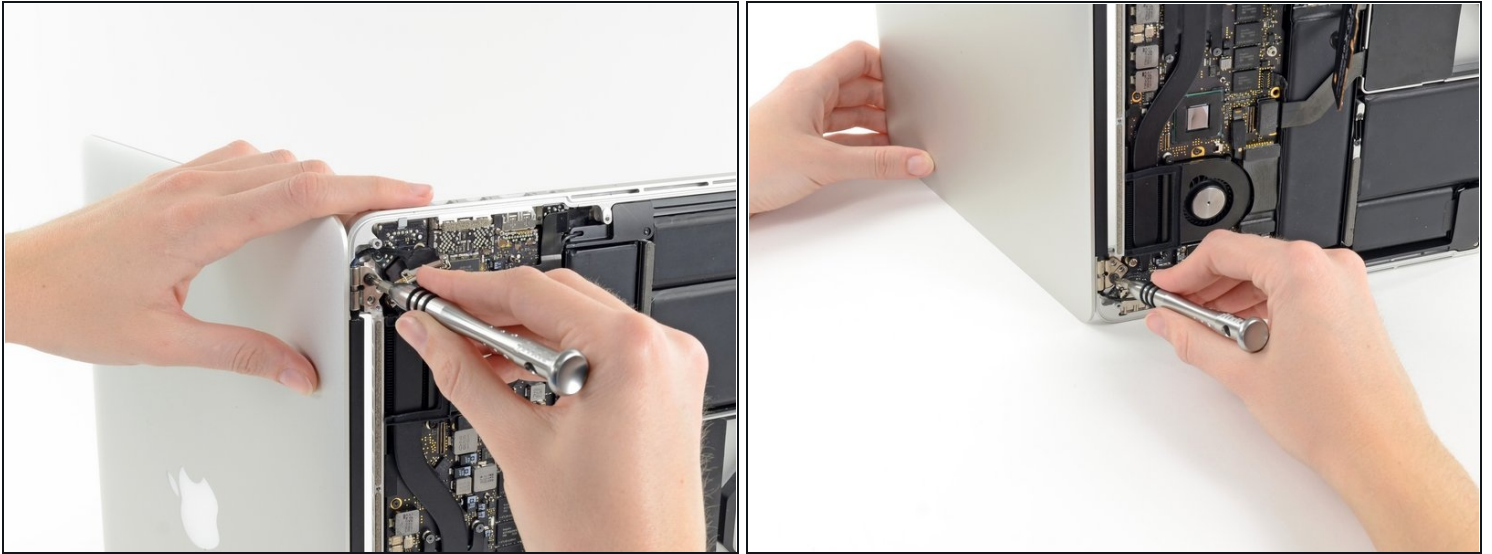
- Use a pair of tweezers to lift aluminum hinge brackets off the right and left display hinges.

Step 18



- Remove the four inner 5.3 mm T8 Torx screws (two on each side) securing the display to the upper case.

Step 19



- ☑ Open the MacBook Pro approximately 110 degrees, and place it sideways on the table, as shown.
- While holding the display and upper case together with your left hand, remove the remaining T8 Torx screw from the upper display bracket.
- ⚠ Be sure to hold the display and upper case together with your left hand. Failure to do so may cause the freed display/upper case to fall, potentially damaging each component.
- Remove the last remaining T8 Torx screw securing the display to the upper case.

Step 20



- Grip both halves of the device, one in each hand.
- Gently push forward on the bottom half of the device to detach it from the display assembly.
- Carefully set each component aside, making sure to set down the lower half keyboard-side down.

To reassemble your device, follow these instructions in reverse order.