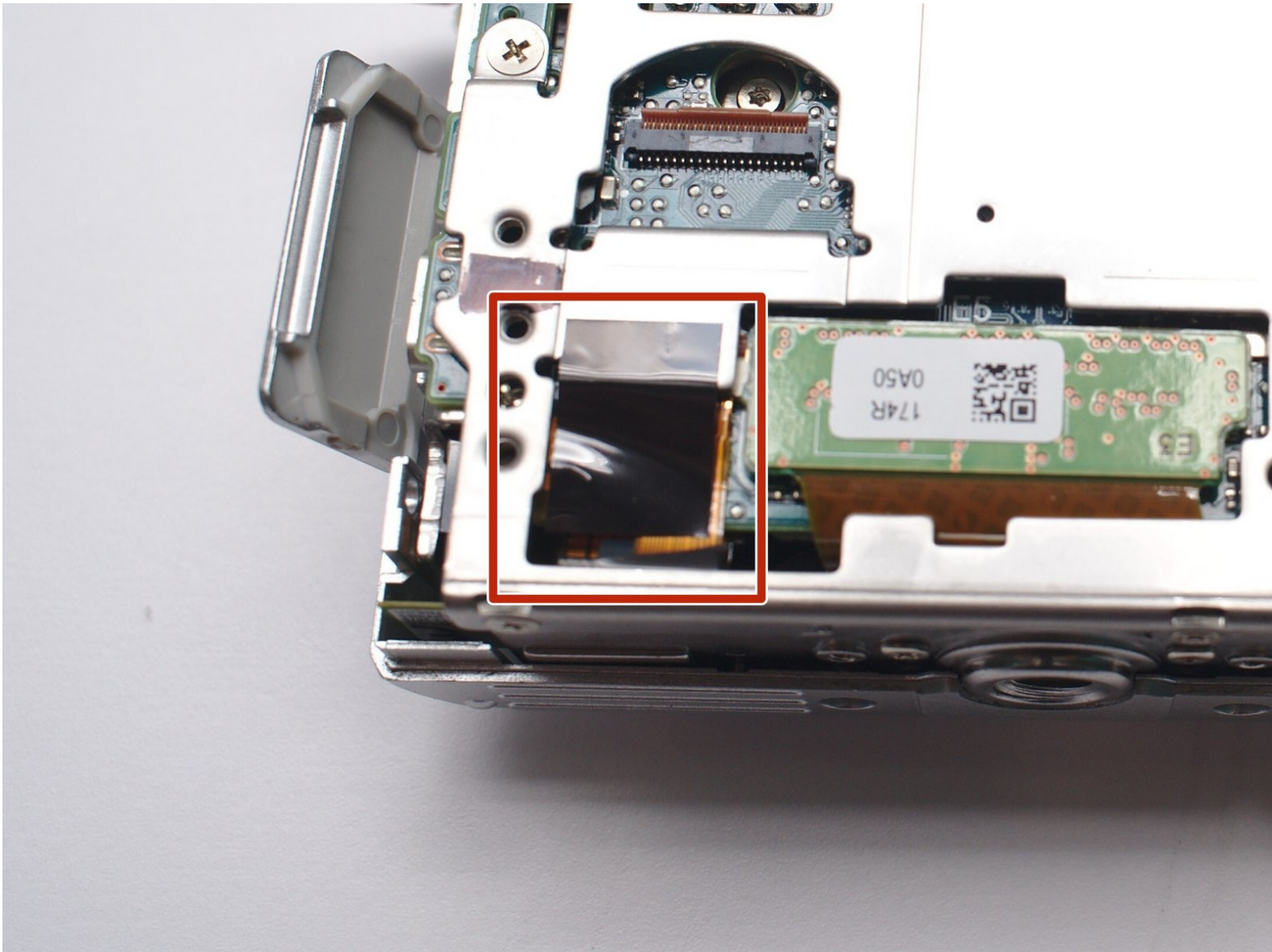




Nikon 1 J5 Main PCB Replacement

Written By: Terrance





TOOLS:

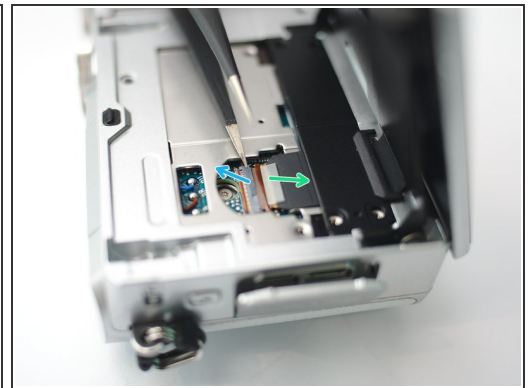
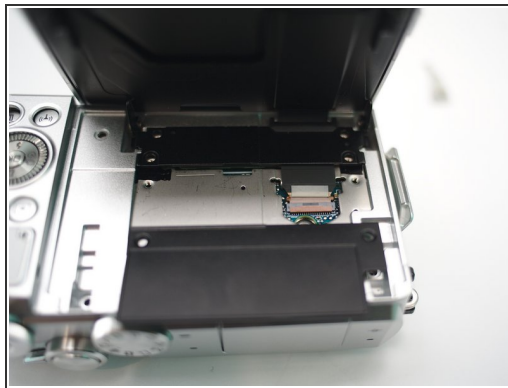
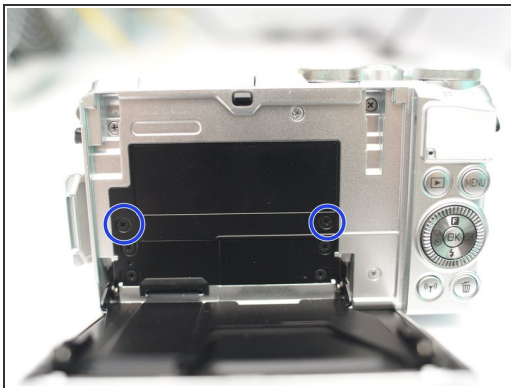
- [Phillips #00 Screwdriver](#) (1)
 - [Tweezers](#) (1)
 - [Soldering Iron](#) (1)
 - [Multimeter](#) (1)
 - [Resistor 2k-10k ohm 5 watt](#) (1)
-

Step 1 — Remove Micro SD card and Battery



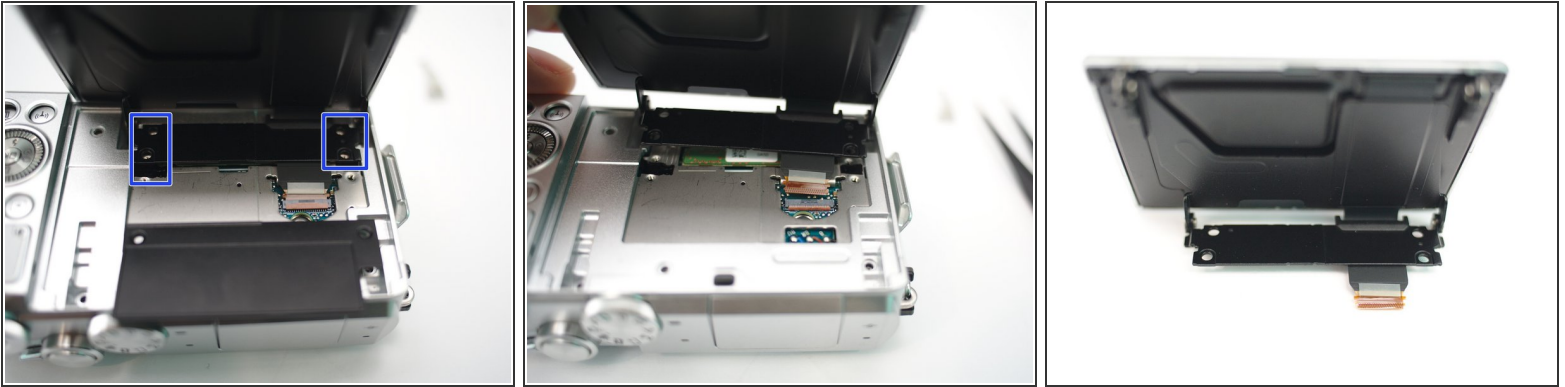
- Remove Micro SD card and Battery

Step 2



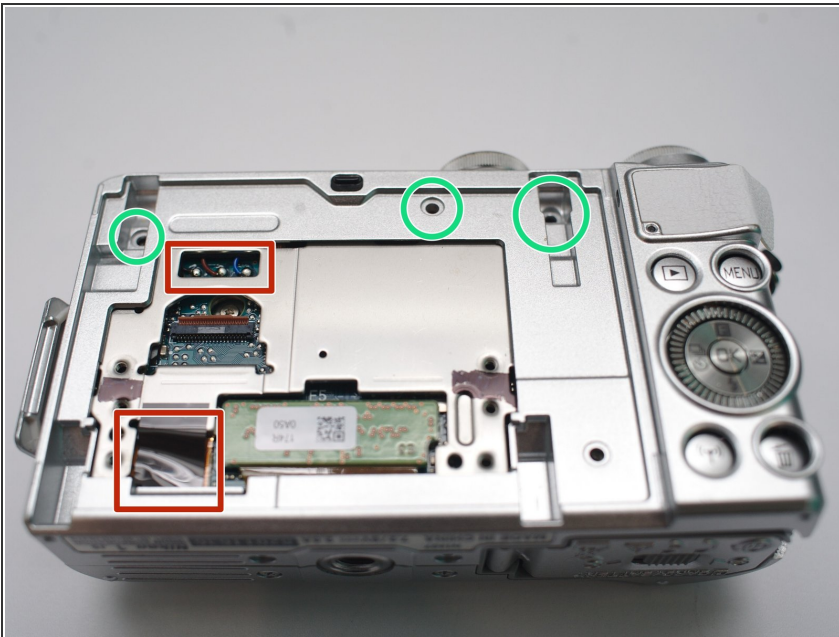
- Remove 2 screws
- Open plastic LCD connector cover
- Lift FPC connector latch
- Detach LCD FPC

Step 3



- Remove 4 screws
- Remove LCD module

Step 4 — Back Case

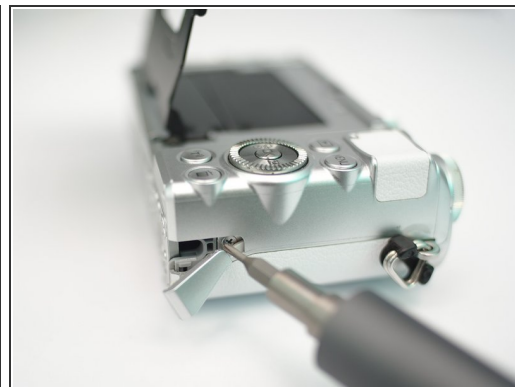


⚠ WARNING!!! DO NOT TOUCH THESE Solder joints!!! High Voltage up to 300V..

i Or discharge the flash condenser first, as per "Main PCB replace guide"

- Remove 3 screws

Step 5



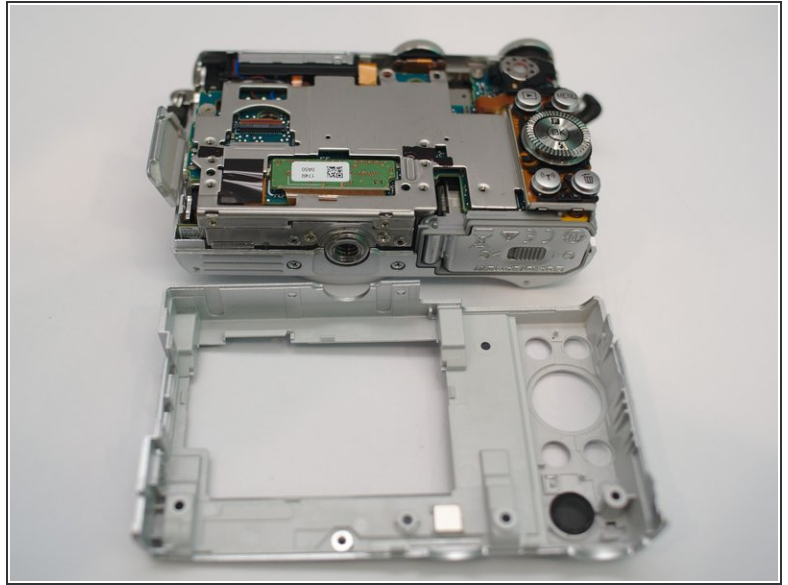
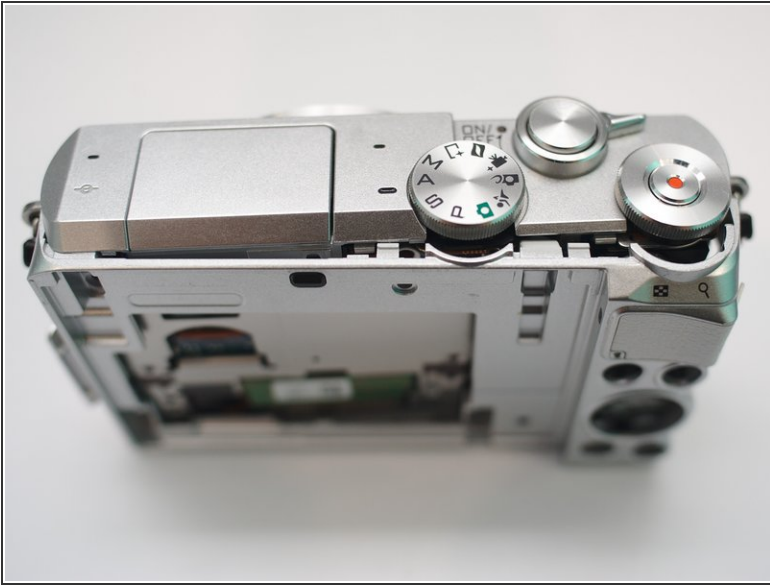
- Left side, in connector bay, remove 2 screws.
- Bottom, remove 2 screws
- Right side, remove 1 screw

Step 6



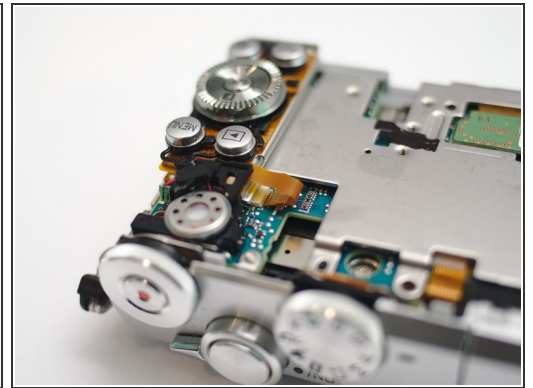
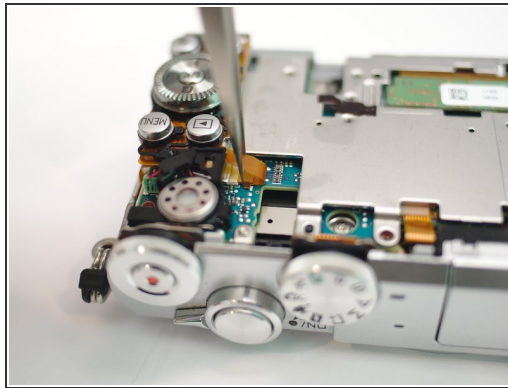
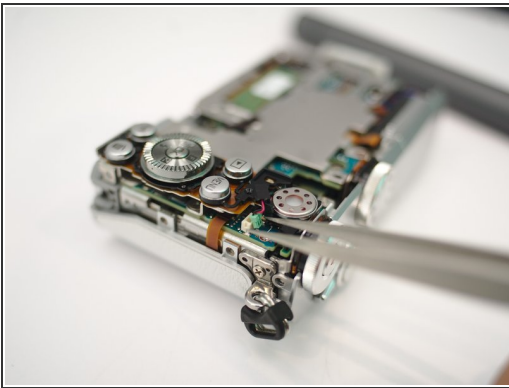
- Peel here and remove 1 screw within.

Step 7



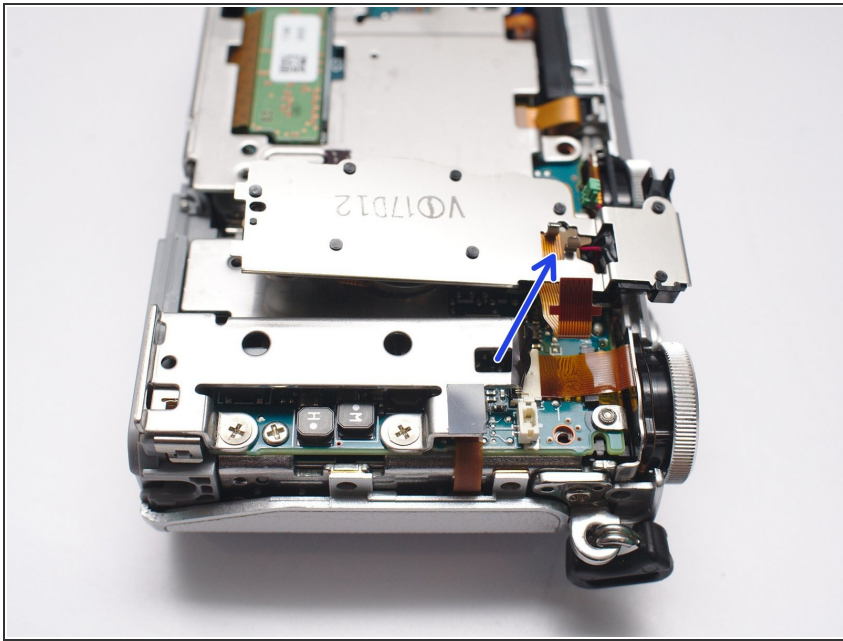
- Pop open back case and remove it from body.

Step 8 — Keypad



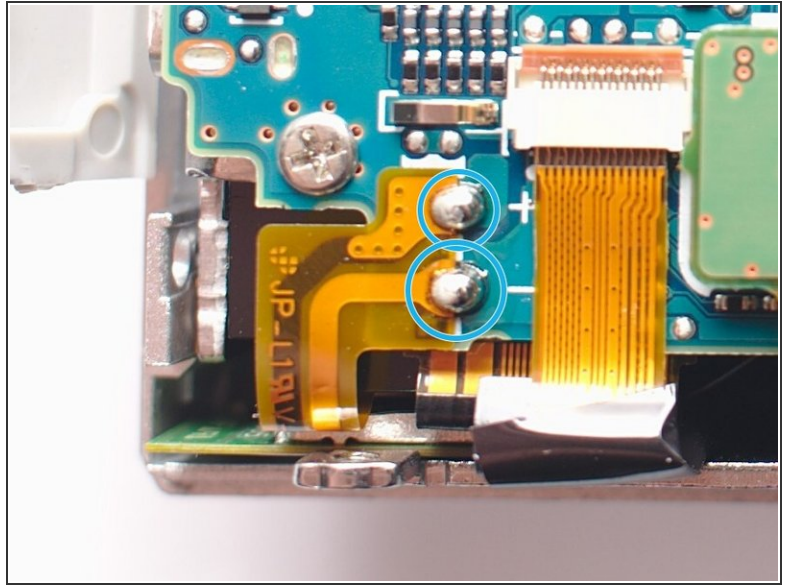
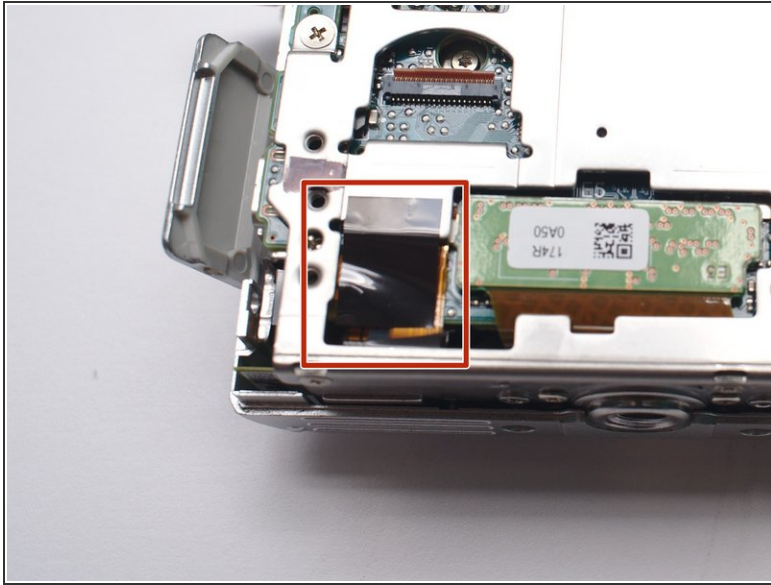
- Disconnect speaker
- Disconnect keypad FPC

Step 9



- Push latches from below
- pop up and remove keypad.

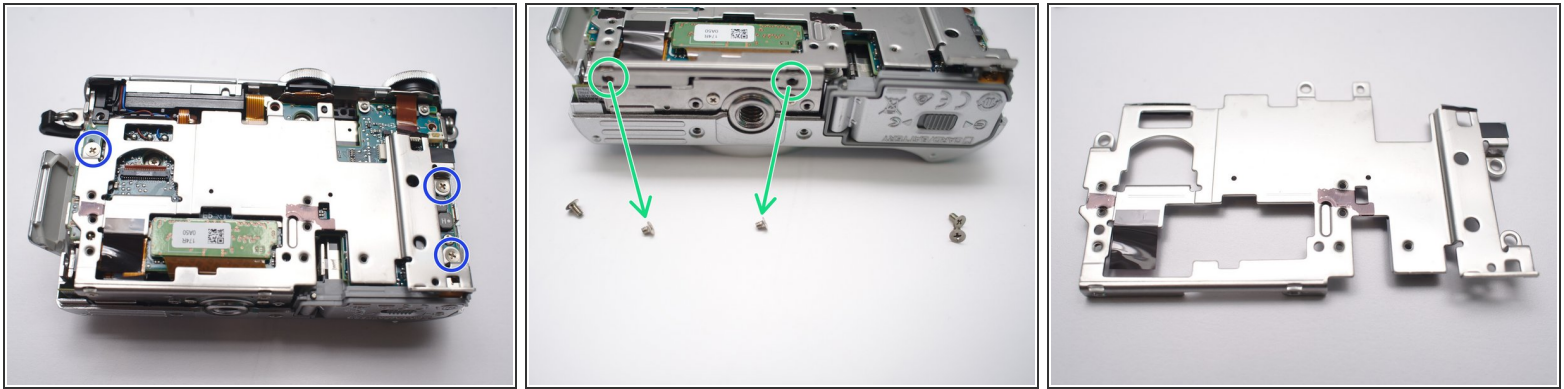
Step 10 — Main PCB



⚠ Caution!!! High DC voltage up to 300V

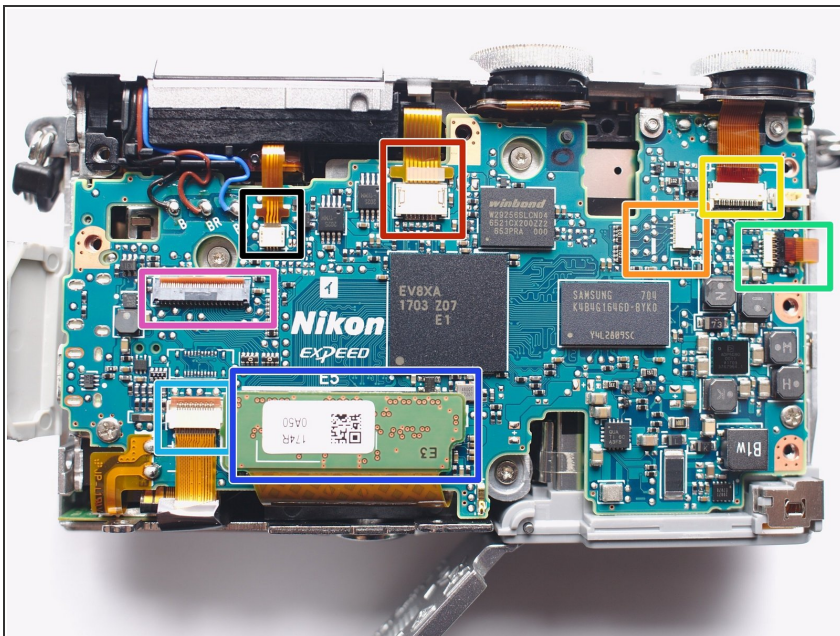
- Peel tape with an isolated tool (plastic crowbar, plastic tweezers, toothpick etc). DO NOT USE metal tweezers.
- Use a 2-10kohm 5W resistor to discharge flash condenser, for atleast 10 seconds.
- Check voltage across 2 points. Make sure it's below 5V DC

Step 11



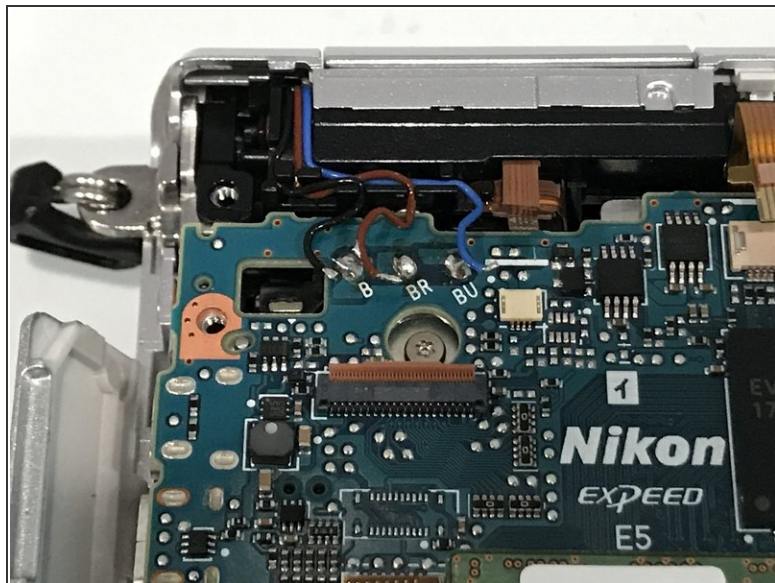
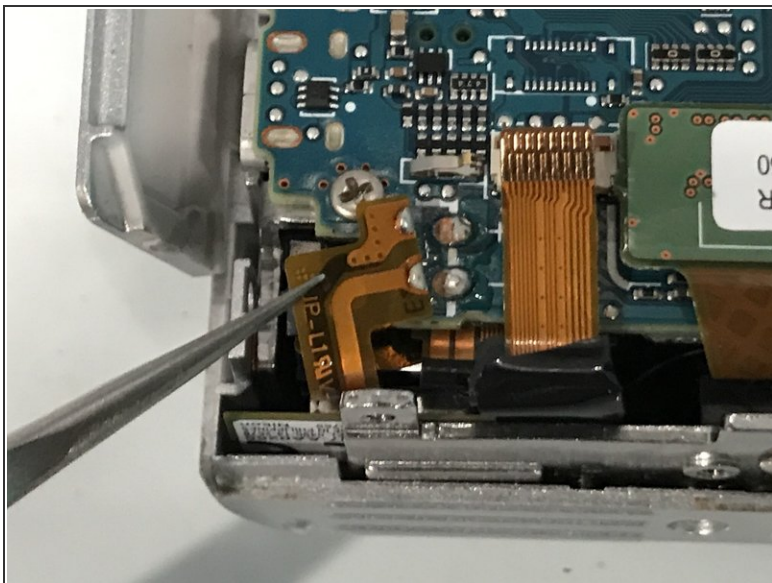
- Remove 3 screws
- Remove 2 screws
- Remove metal frame.

Step 12 — Detach all FPC from main PCB



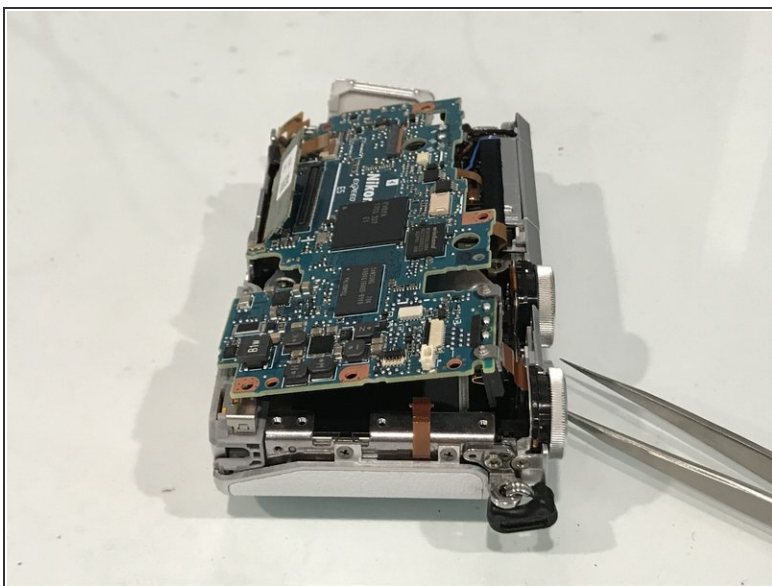
- Flash solenoid and detect
- Microphones and AF assistant LED
- Keypad
- Switches
- NFC
- WiFi and Bluetooth, Lens(back)
- CMOS sensor
- LCD

Step 13 — Desolder Flash Condenser and Tube



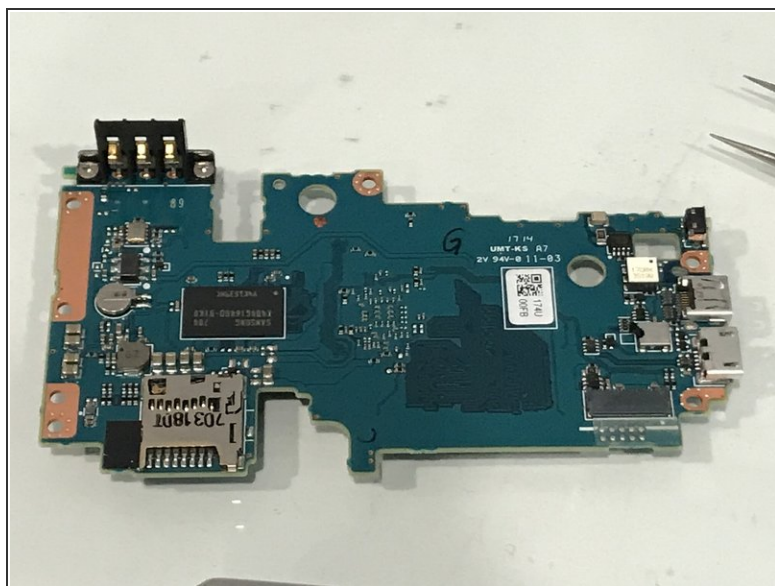
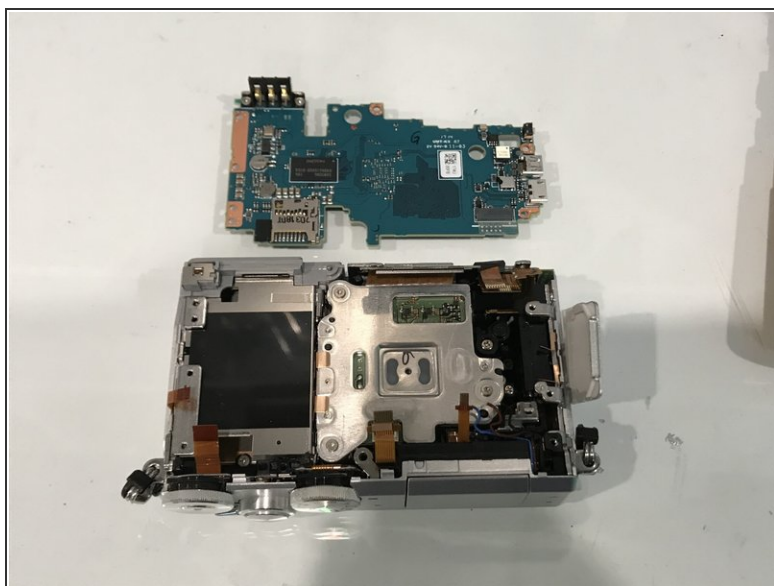
- Desolder Flash Condenser
- Desolder flash xenon tube

Step 14



- Lift top side of main PCB
- Detach (pull out) lens contacts FPC

Step 15 — Remove Main PCBA



- Insert wisdom here.

To reassemble your device, follow these instructions in reverse order.