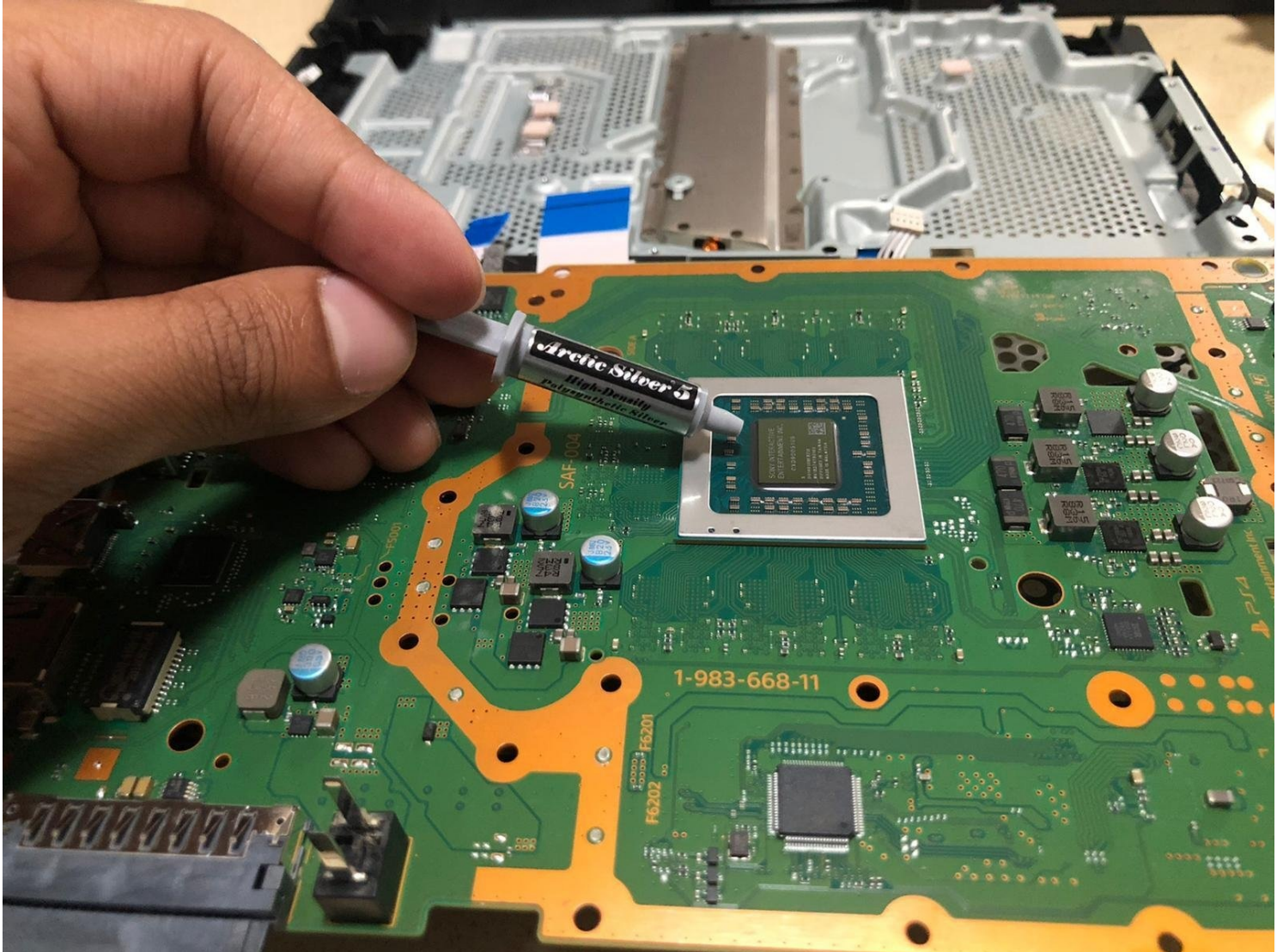




PlayStation 4 Slim Thermal Paste Replacement

Consoles such as the PlayStation 4 Slim over...

Written By: Muhammad Saif Khan



INTRODUCTION

Consoles such as the PlayStation 4 Slim over time start to overheat from all the excessive dust accumulating. It causes the thermal paste to thin out and the speed drastically reduces. The overheating produces noise and users no longer want the console because of this some are even willing to replace it. This guide shows how to clean PlayStation 4 Slim, replace the thermal paste, and restore the console to fantastic working conditions!

[video: <https://www.youtube.com/watch?v=0BYsBdS8lvE>]

🔧 TOOLS:

Arctic Silver ArctiClean (1)
Arctic Silver Thermal Paste (1)
TR9 Torx Security Screwdriver (1)
Phillips #0 Screwdriver (1)
Compressed Air (1)
Q-Tips (1)
Microfiber Cleaning Cloths (1)
Paintbrush (1)

⚙️ PARTS:

PlayStation 4 Slim Fan (1)

Step 1 — Thermal Paste



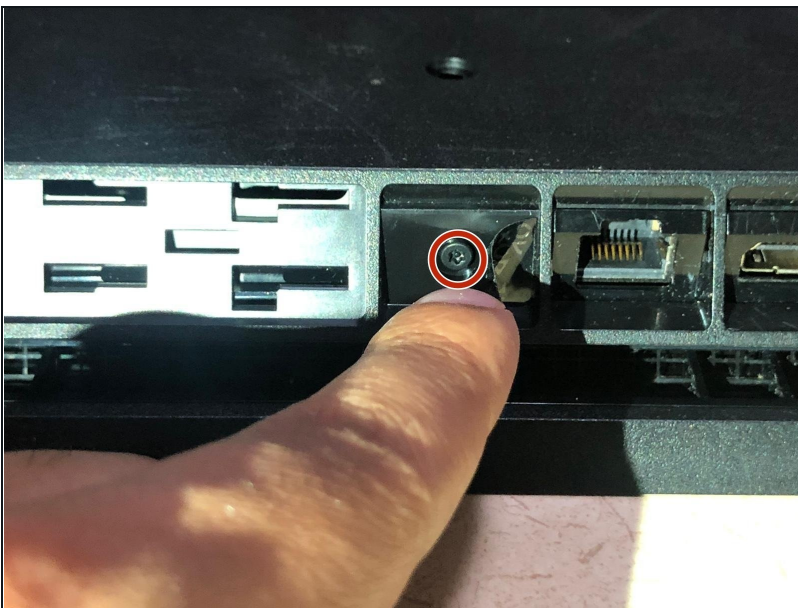
- Remove the panel next to the ports by sliding it to the right.
- Use a Philips PH1 screwdriver to remove the screw.

Step 2



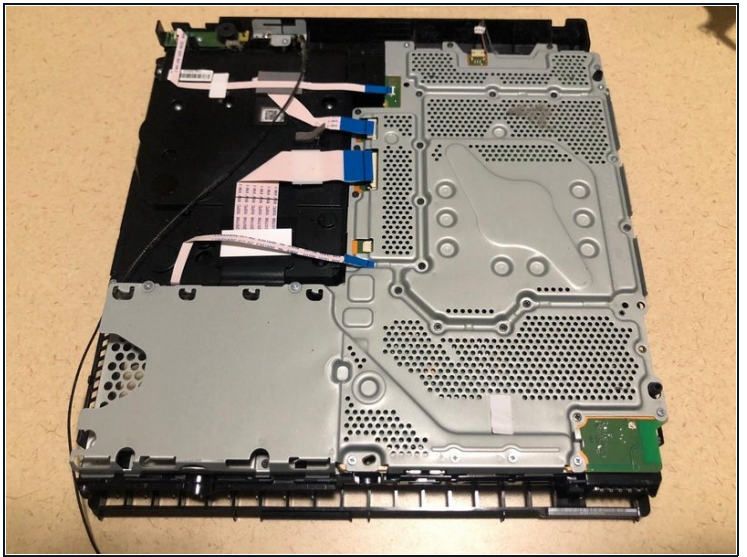
- Pull the black ribbon on the side of the PS4 to remove the hard drive.

Step 3



- Locate the plastic warranty sticker next to the three ports on the side of the console.
- Peel off the plastic warranty sticker next to the three ports on the side of the console.
- Use a T8 Torx security screwdriver to remove the screw.

Step 4



- Flip the PS4 with the bottom side facing upwards and the side of the screw you just removed facing you.
 - Remove the cover by prying the two corners and then sliding it back.
- ⓘ This step will require some force and you will hear clicking sounds as the cover is coming off.

Step 5



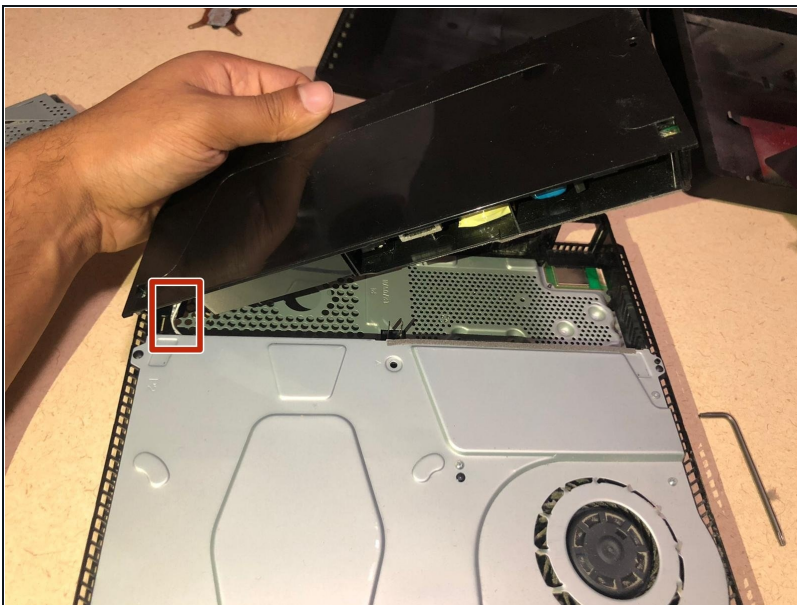
- Use a Phillips #0 screwdriver to remove this screw.

Step 6



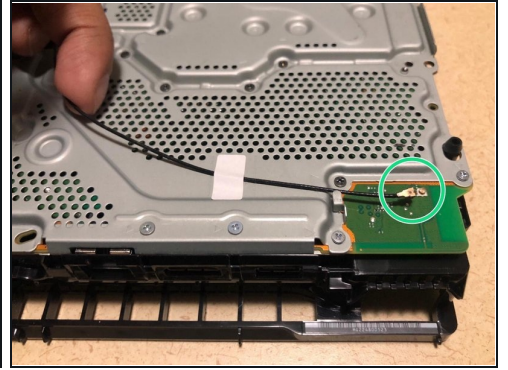
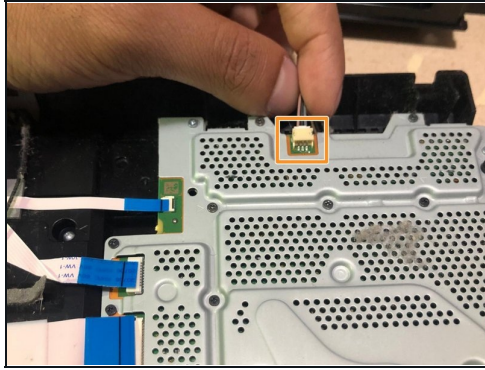
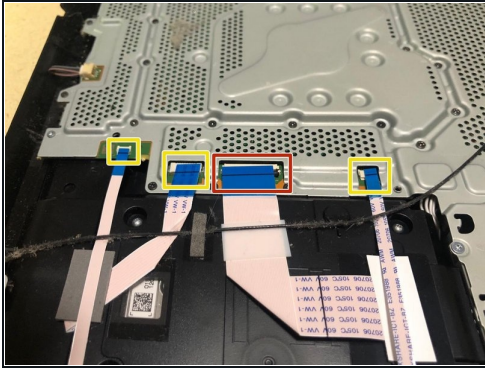
- Remove the cover by prying the two corners and then sliding it back.
- ❗ This step will require some force and you will hear clicking sounds as the cover is coming off.
- Remove the three T8 Torx security screws.
- Use a Phillips #1 screwdriver to remove the two screws.
- Lift and remove the metal panel after unscrewing.

Step 7



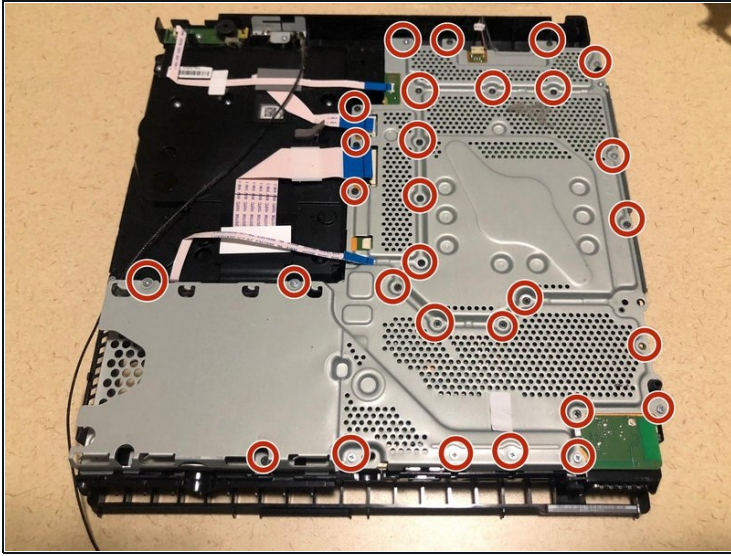
- Remove the power supply completely by disconnecting the wire.

Step 8



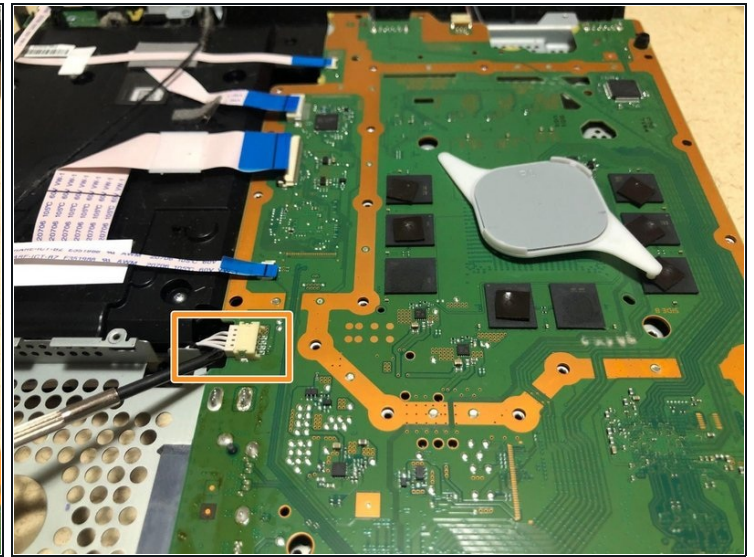
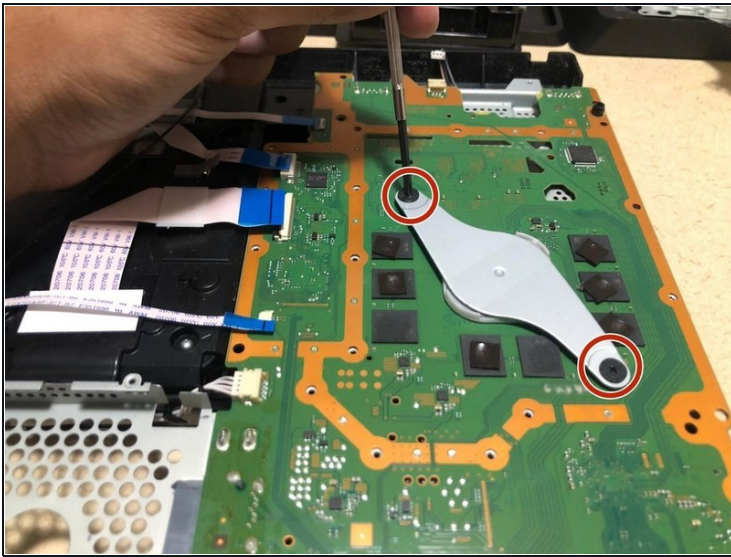
- Flip the PS4 to view the metal paneling.
- Lift the black clip on the largest connection to remove it.
- Disconnect the wire by pulling it back with a little bit of force.
- By pulling on the blue tabs gently you are able to remove the connections.
- Gently lift the black wire to disconnect from the motherboard.

Step 9



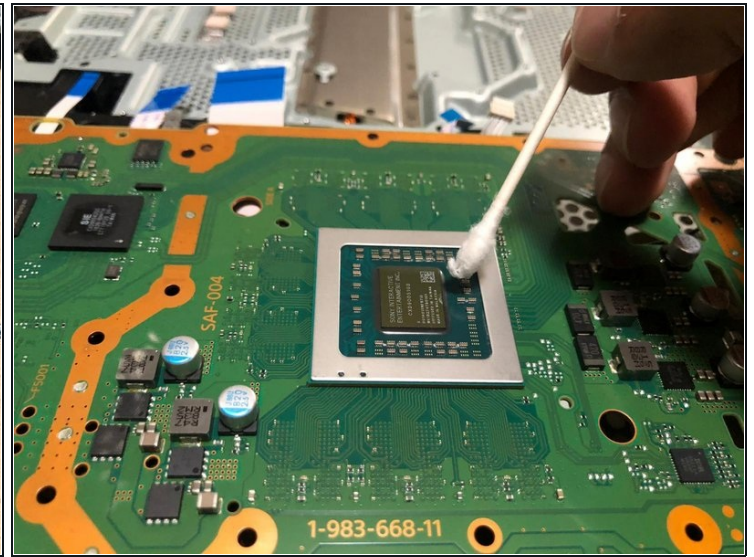
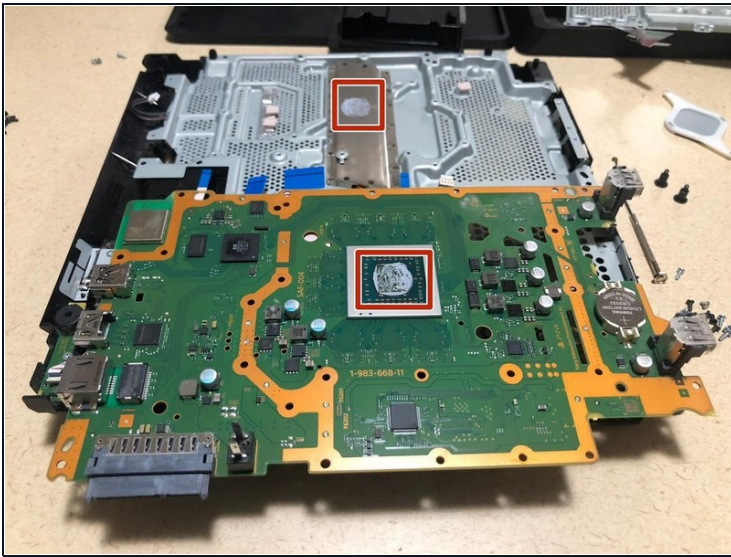
- Use a Phillips #0 screwdriver to remove all screws.
- After unscrewing, remove the metal panel to access the motherboard.
- ① Removing the metal panel may require some force but do not pull up too hard as you may have missed a screw.

Step 10



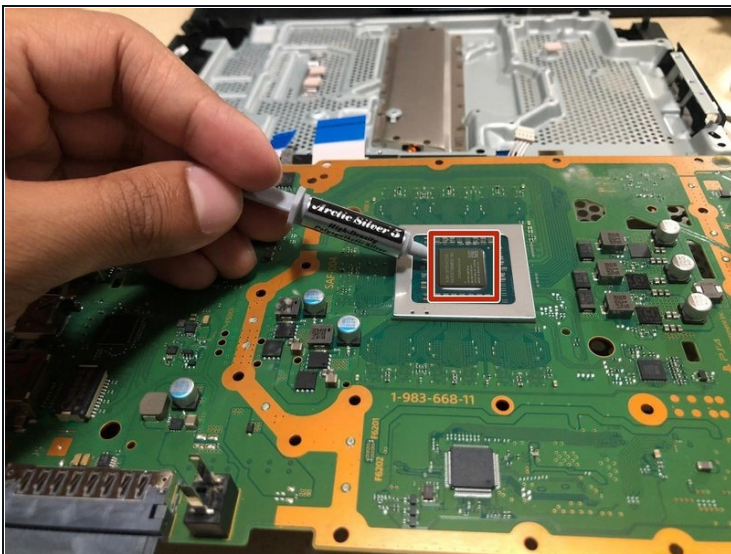
- Use a Phillips #0 screwdriver to remove two screws.
- Unplug the wire by pulling firmly.
- Lift the metal brace with your fingers to expose the motherboard.

Step 11



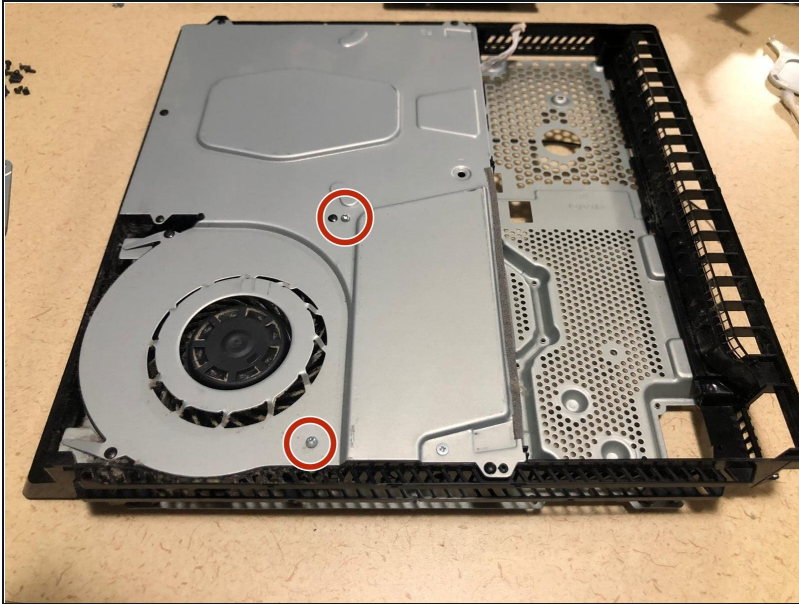
- Apply 2-3 droplets of thermal material remover on Q-tips to remove the old thermal paste and then wipe it down with a micro fiber cloth until no residue of old paste is left.
 - Apply 2-3 droplets of thermal surface purifier on a new Q-tip and go over the area cleaned.
- ① Both steps may require multiple repetitions.

Step 12



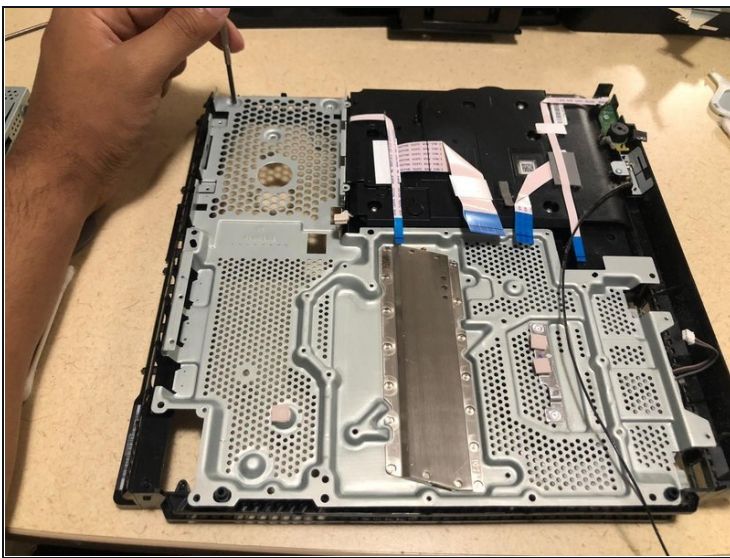
- Squeeze about 3/4 of an inch of Arctic Silver 5 thermal paste onto the prepared surface.
- ① Let the thermal paste rest for 10 minutes before reassembly.

Step 13



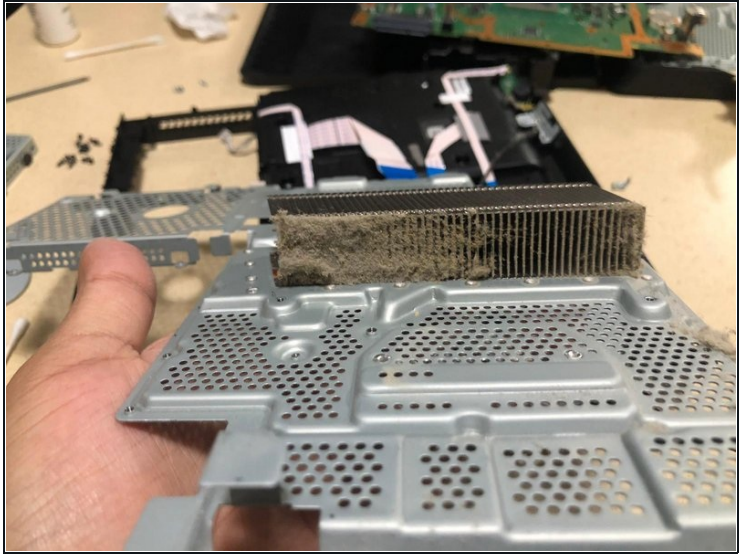
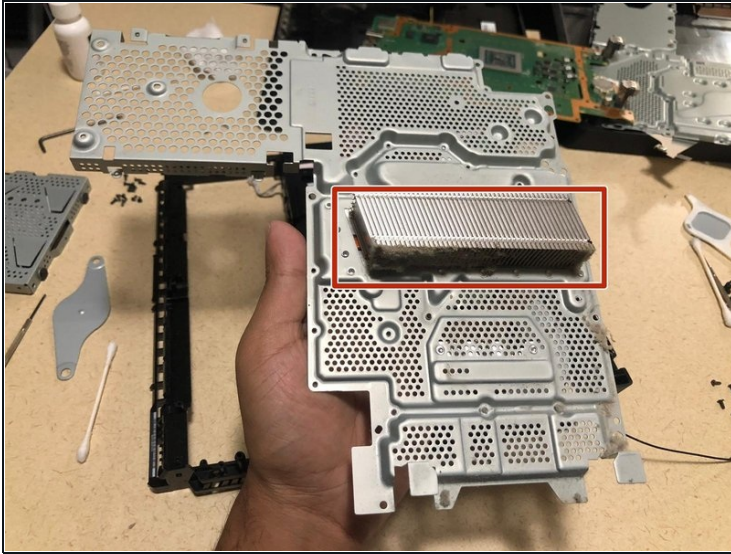
- Use a Phillips #0 screwdriver to remove the two screws.

Step 14



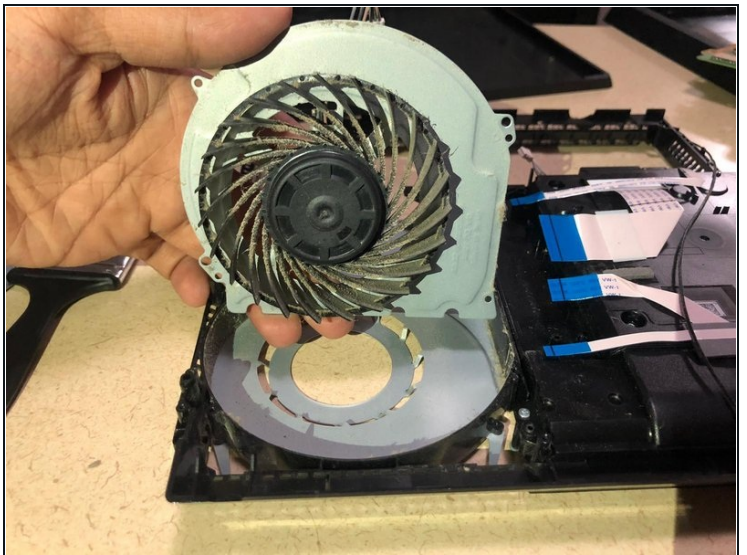
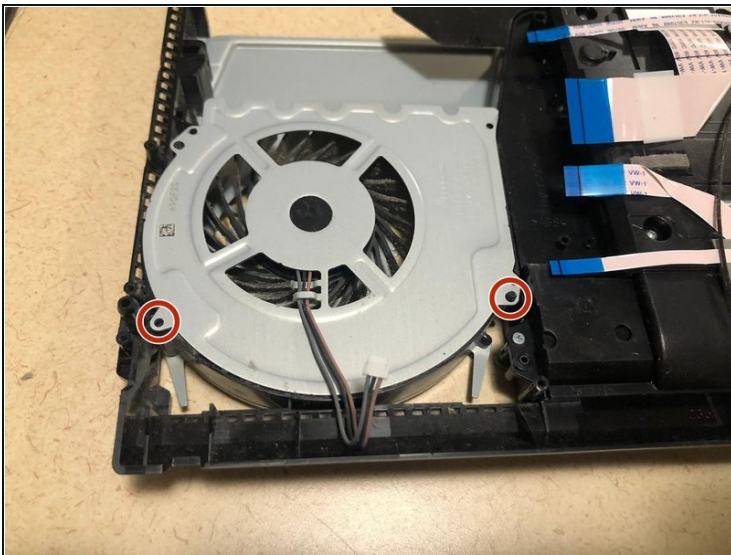
- Flip the console.
- Use a Phillips #0 screwdriver to remove the screw.

Step 15



- Lift up the metal panel and on the back the radiator is located.
- Clean the radiator by using a brush and a compressed air can.

Step 16



- Use a Phillips #0 screwdriver to remove the two screws.
- Clean the fan by using a brush and a compressed air can.

To reassemble your device, follow these instructions in reverse order.

