



BlackBerry 7280 Front Case Replacement

This guide will show a user how to install a front case on the BlackBerry 7280.

Written By: Andrew Catlin



INTRODUCTION

The outer shell of the BlackBerry 7280 contains two parts, the back case and the front case. This guide demonstrates how to remove the front case by unscrewing the supporting bracket and then prying the front case away.

TOOLS:

- [T6 Torx Screwdriver](#) (1)
 - [iFixit Opening Tools](#) (1)
-

Step 1 — Battery



- With your thumb press down on the locking- button on the back of the BlackBerry 7280.
- Slide the battery cover off the device.

Step 2



- Remove the lithium-ion battery from the back of the device using your index finger.

Step 3 — SIM Card



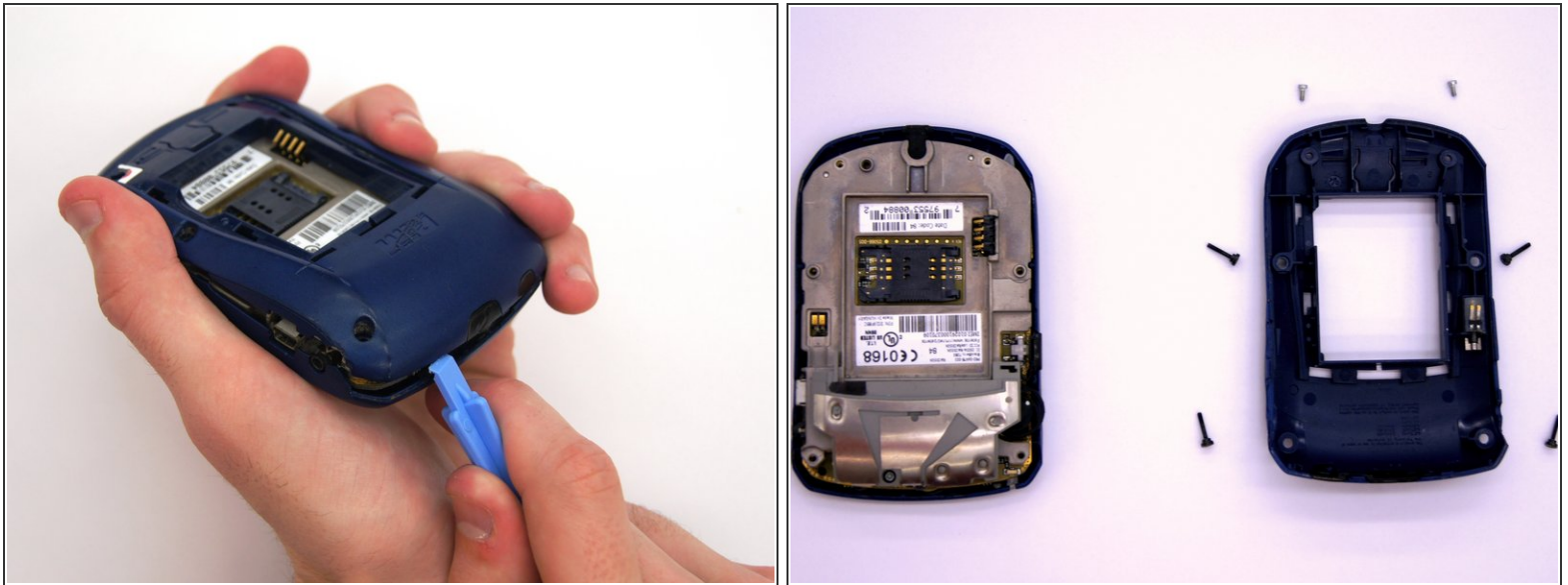
- Hold the device with both hands.
- Lift the SIM card holder using your thumb and index finger.
- Remove the SIM card from the device.

Step 4 — Back Case



- Using a Torx T6 screwdriver, remove all six 1/8 inch screws (marked in red) from the back case. Set screws aside.
- ⓘ The SIM card has been removed here to prevent damage to the card. This is recommended, but not not required.

Step 5



- Use the plastic opening tool to pry the back case away from the front case.

Step 6 — Front Case



- Using a Torx T6 screwdriver, remove the lone 1/8 inch screw that holds the upper metal bracket onto the larger metal bracket. Set aside the screw and the bracket.

Step 7



- Remove the front plastic case from the metal bracket.

To reassemble your device, follow these instructions in reverse order.