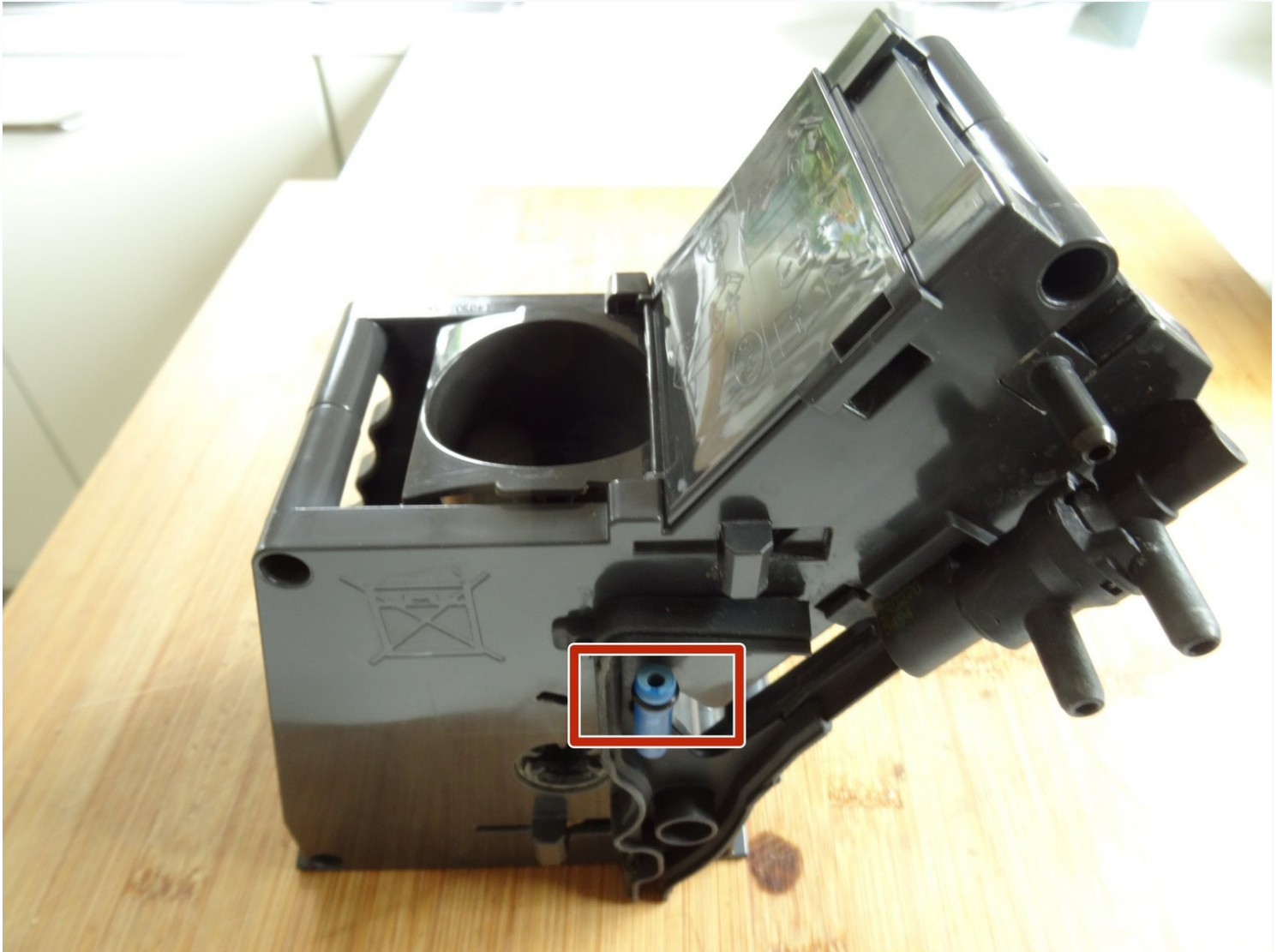




# Siemens EQ5 Brew group revision

The brew group of these machines can be easily...

Written By: VauWeh



# INTRODUCTION

The brew group of these machines can be easily removed for cleaning. The most important seals need to be replaced from time to time. This is shown here.

Note: The brew group of the EQ9 is completely different, the instructions do not apply to it.

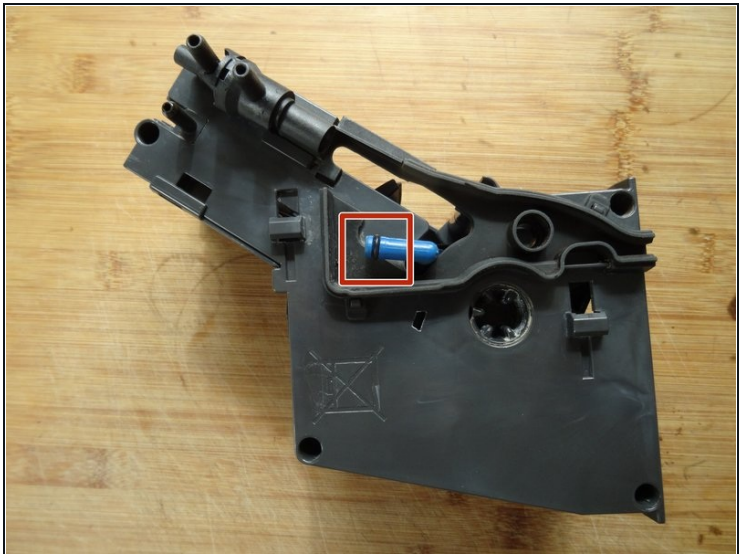
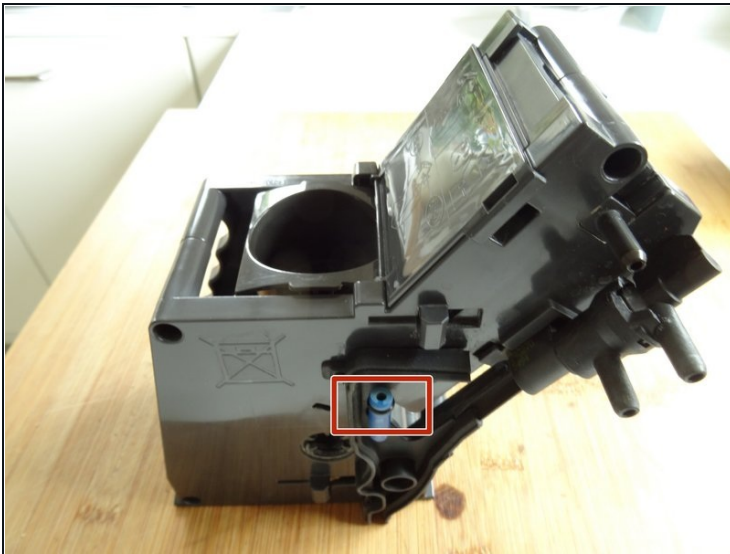
## TOOLS:

[TR10 Torx Security Screwdriver](#) (1)  
[iFixit Opening Tool](#) (1)

## PARTS:

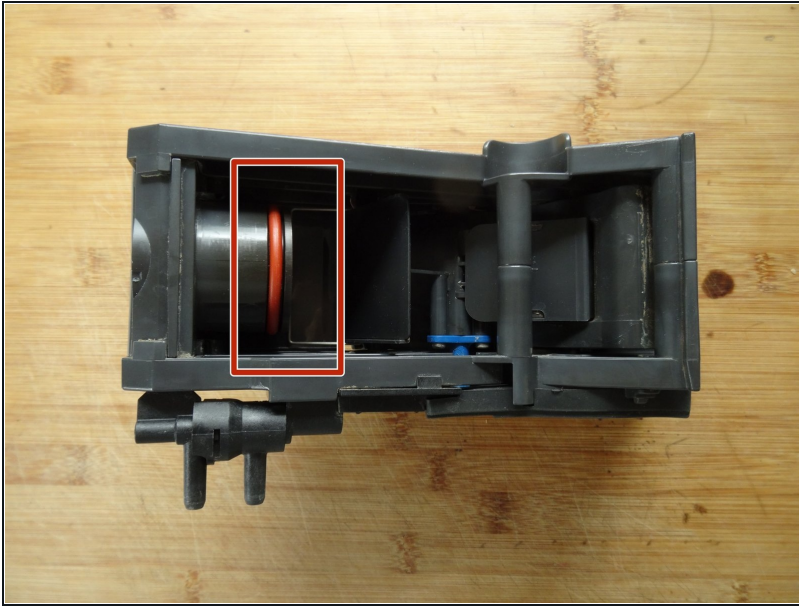
[O-Ring Kit Siemens EQ](#) (1)

### Step 1 — EQ5 Brew group revision



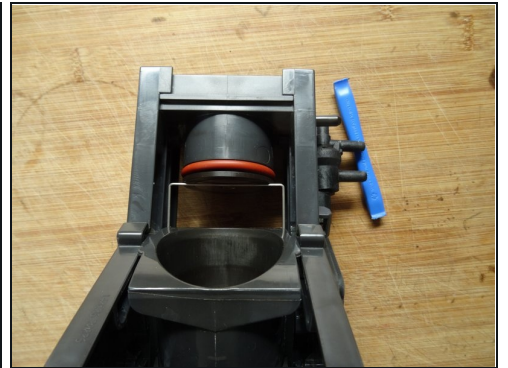
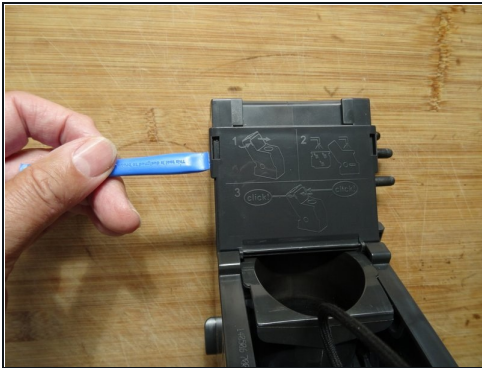
- Picture of the brewing unit. The first gasket to be replaced is on the blue water inlet.
  - ① This seal can be replaced immediately without further disassembly. The gasket is under strain and should be replaced quite often. It slides better when thinly coated with food-grade silicone grease.

## Step 2



- The second seal, which should be replaced more often, is located on the upper piston. In theory, it could also be replaced without further disassembly. Since opening the brewing unit is not difficult, it can be cleaned more thoroughly.

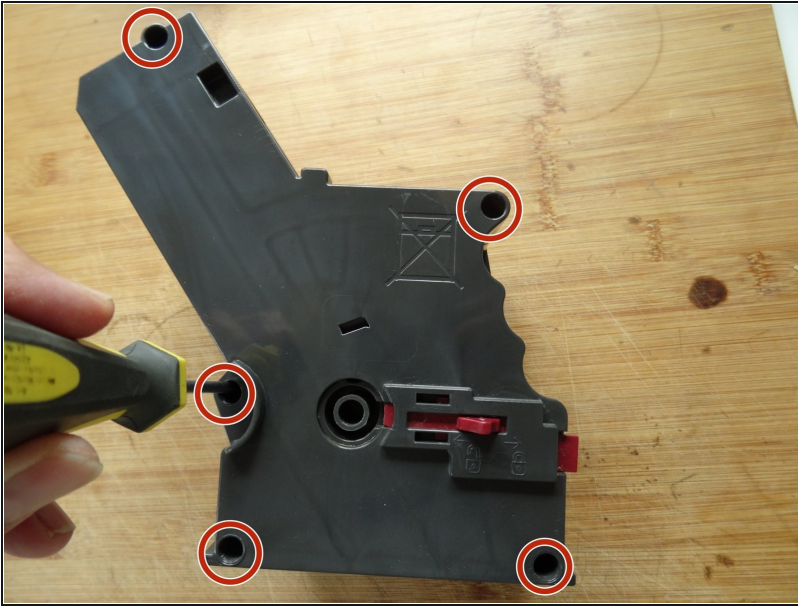
## Step 3



- Remove the cover from the upper piston. Reach under the notches on the left and right, a plastic tool is helpful here, but you can also use your fingers. Remove the cover.
- Now the upper piston is easily accessible from two sides and can be cleaned quite well.

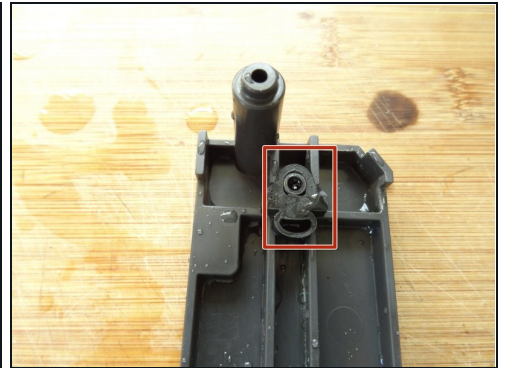
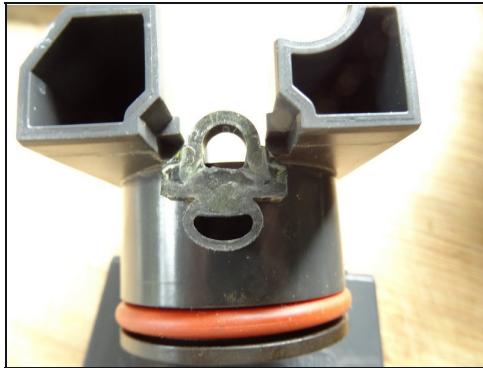
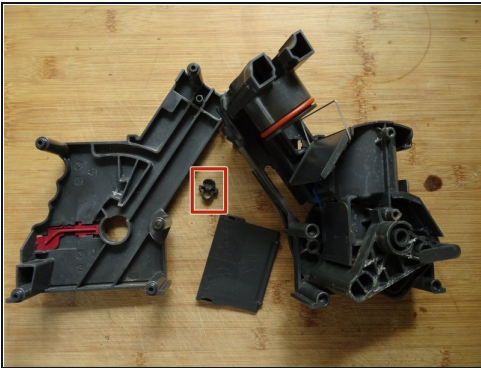


## Step 4



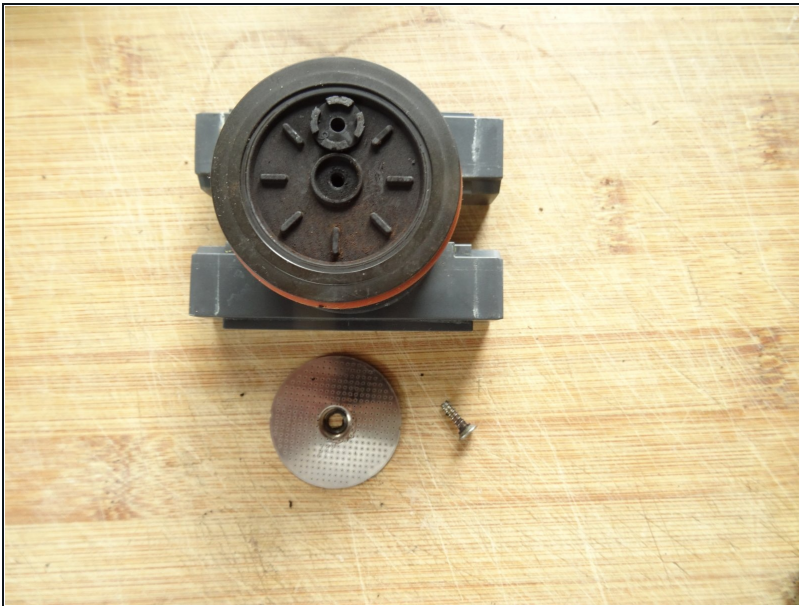
- Place the brewing unit on the work surface as shown.
- Unscrew the **five** Torx T10 screws.

## Step 5



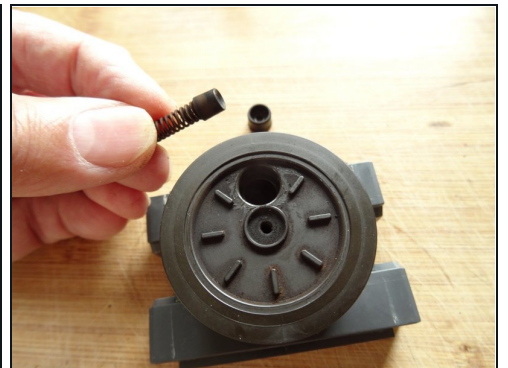
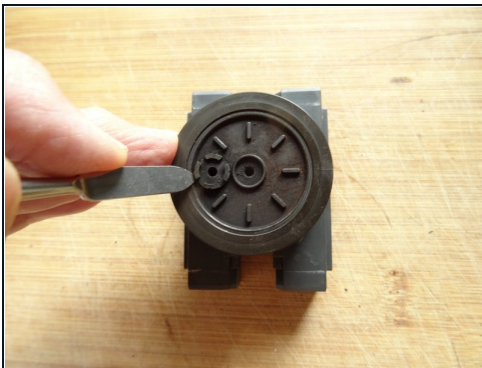
- Lift the upper side plate. The rubber bumper at the top of the piston will probably fall off. It must be pushed back into the top of the pin on the side plate during reassembly, with the smaller bumper facing down.

## Step 6



- Pull out the piston completely.
- Unscrew the Torx T10 screw on the brewing filter.
- Take off the brewing filter.

## Step 7



- Using a blunt tool, lift out the lid above the crema valve. Lift off the lid.
  - ① The lid is stuck very tightly. Pry it up all around with the tool to lift it up gradually.
- Pull out the crema valve.

## Step 8



- Lift out the cylinder with the lower piston.
- ① Now the **two** Torx T10 screws on the blue water outlet can be removed and the water inlet can be cleaned. It is not absolutely necessary.
- Now the brewing unit is largely disassembled. The lower piston can also be removed, but it is usually sufficient to thoroughly clean the parts that have now been removed. Replace the O-ring on the upper piston and on the water inlet (possibly on both ends), grease them and the cylinder thinly with food-grade silicone grease.
- Reassemble everything.

---

Work through the steps in reverse order to reassemble your device.