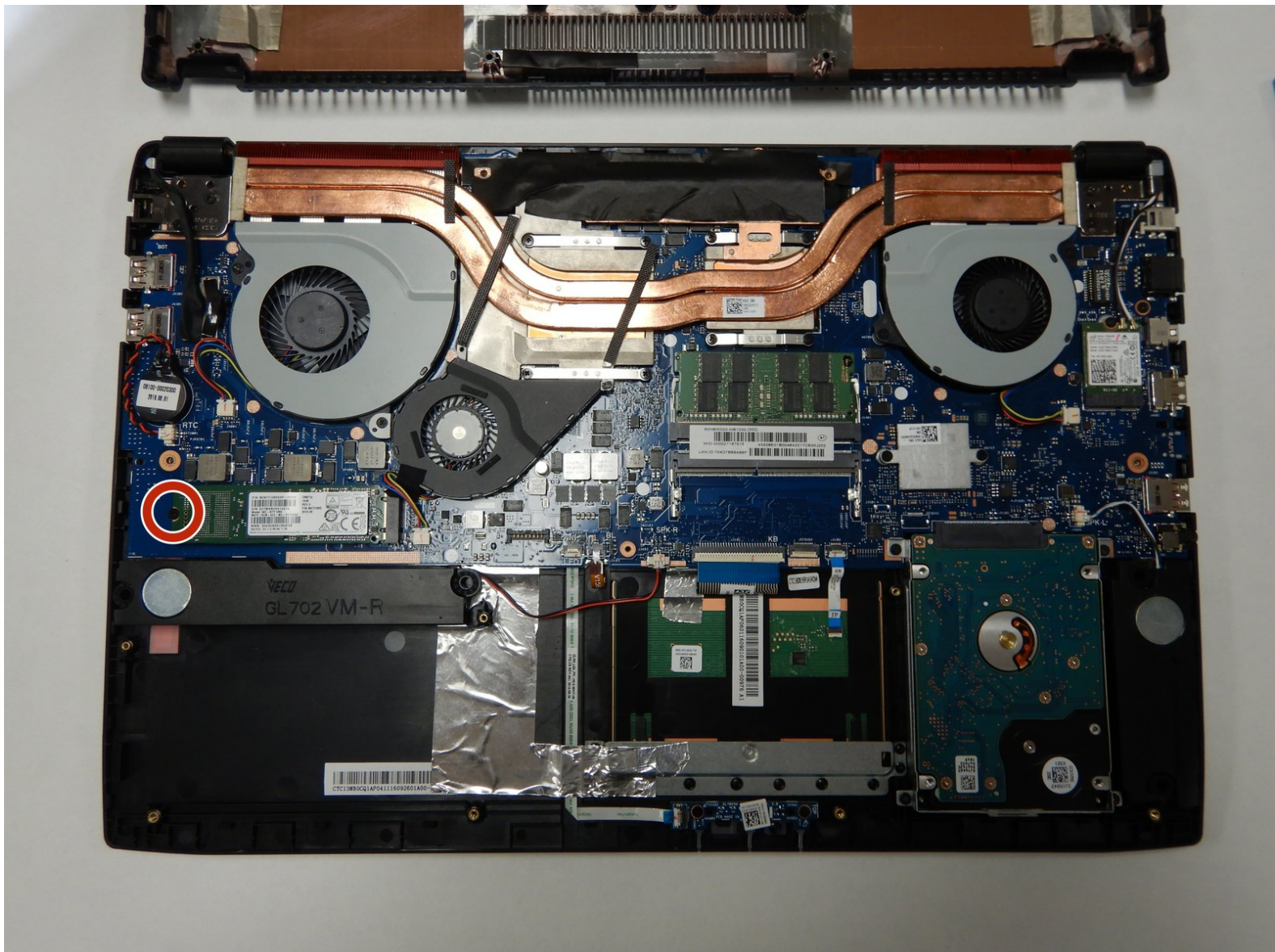




# Asus ROG Strix GL702VM-BHI7N09 Solid State Drive Replacement

Should you find yourself needing to increase...

Written By: Cameron Richard



## INTRODUCTION

Should you find yourself needing to increase storage capacity or experiencing a faulty Solid State Drive (SSD) in your Asus ROG Strix GL702VM-BHI7N09 gaming laptop, this guide will be useful. The SSD is vital for system operation and is required for storing the programs and operating system on your computer.



### TOOLS:

- [iFixit Opening Tool](#) (1)
- [Phillips #1 Screwdriver](#) (1)



### PARTS:

- [Crucial P3 NVMe PCIe M.2 2280SS SSD - solid performance, switching from HDD or SATA to NVMe™](#) (1)
- [Crucial P3 Plus NVMe PCIe M.2 2280SS SSD - fast Gen4 NVMe™ storage for data-intensive applications](#) (1)
- [Crucial P5 Plus NVMe PCIe M.2 2280SS SSD - professionals, creatives, and hardcore gamers](#) (1)

## Step 1 — Back Panel



- Flip the laptop over to the back panel, with the serial numbers facing up.
- Using a Phillips #1 screwdriver, remove the ten 12 mm screws from the back panel.

## Step 2

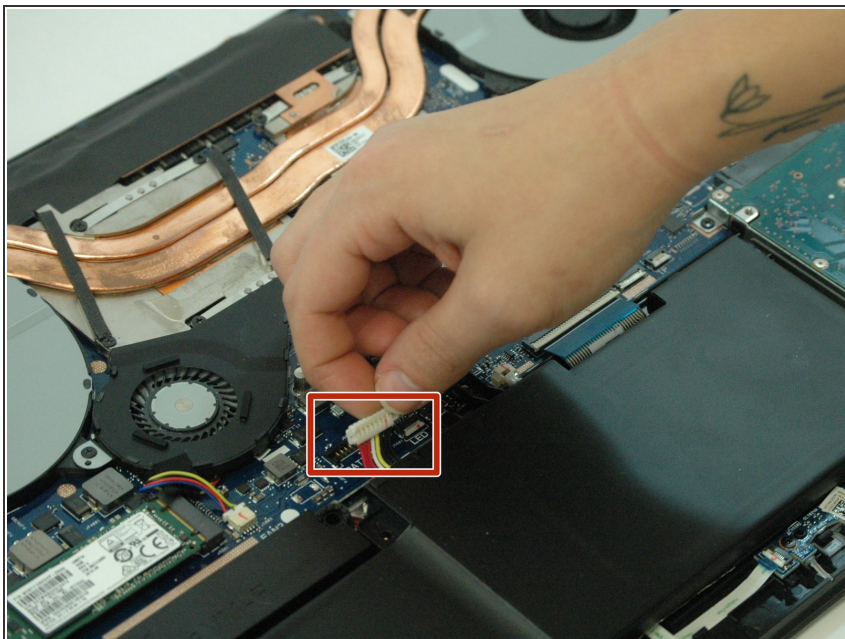


**⚠ The snap seals don't need a lot of pressure to open, and may break if forced. Be gentle with the opening tool.**

- Wedge the sharp edge of the plastic opening tool into the seam between the back panel and the rest of the laptop, then gently pry the panel up.
- ⓘ There will be a snapping sound as you remove the back panel, but that is just the seal loosening.
- Continue breaking the seals by sliding the plastic opening tool around the entire laptop under the seam until the back panel is free.
- Once you have broken all the seals, carefully lift the panel off.

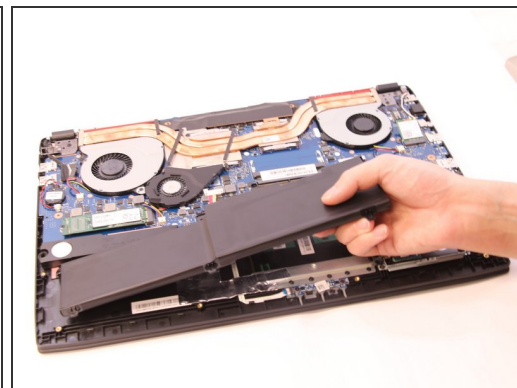
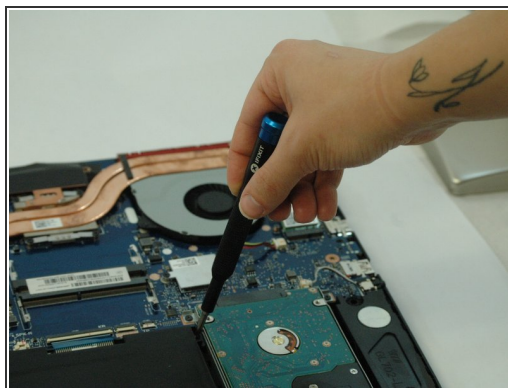
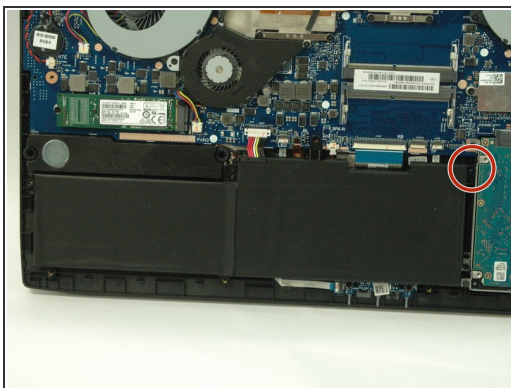


## Step 3 — Battery



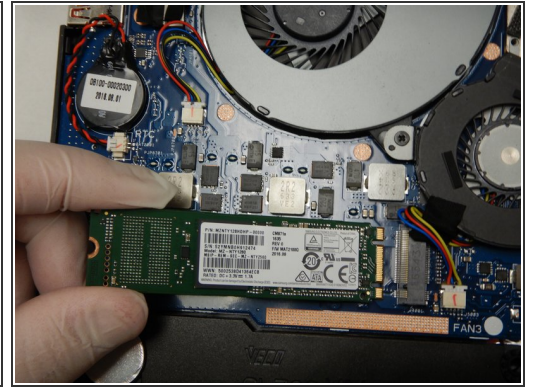
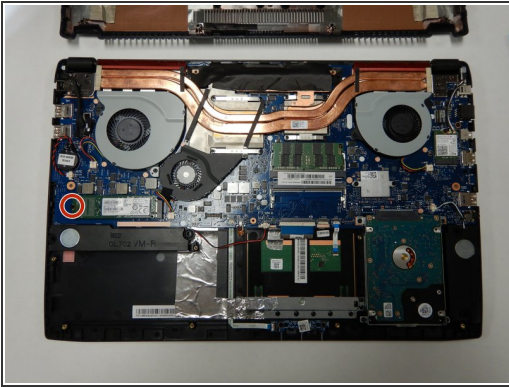
- Unplug the battery from the motherboard.

## Step 4



- Unscrew the 3.8 mm Phillips #1 screw on the top right hand corner of the battery.
- Lift battery from laptop frame.

## Step 5 — Solid State Drive



- Using a Phillips #1 screwdriver, remove the 4mm screw holding down the SSD.
- Slide the SSD out from the connection slot.

To reassemble your device, follow these instructions in reverse order.