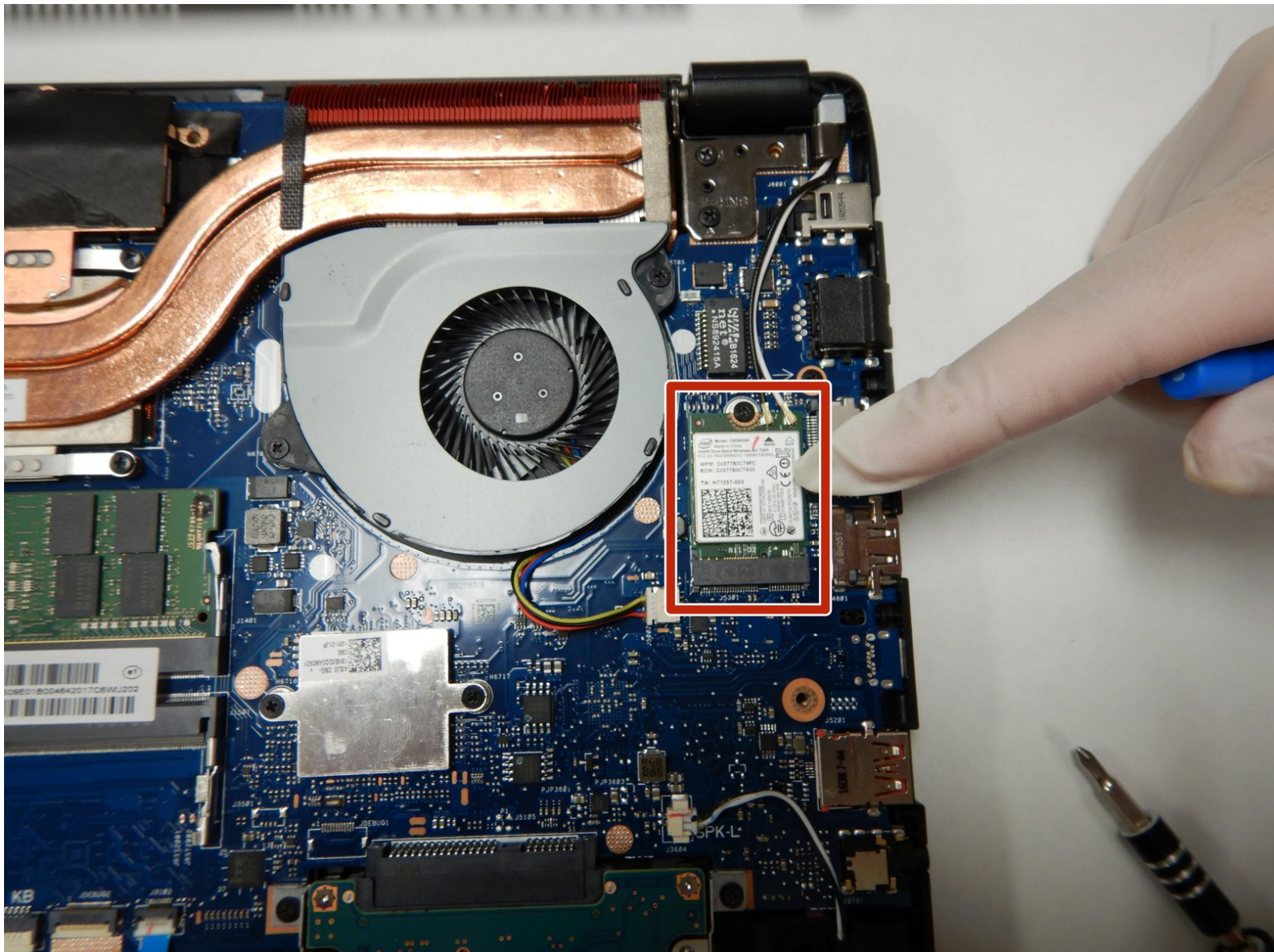




# Asus ROG Strix GL702VM-BHI7N09 Wifi Card Replacement

If you find yourself in need of replacing a Wifi Card, then this guide is useful.

Written By: Alexander Van Auker



## INTRODUCTION

Should you find yourself without Wifi connectivity, a faulty Wifi card could be the problem. Wifi cards enable your computer to connect to outside internet sources, and if it is faulty, it will be difficult for the user to use Wifi. Using this guide will help so that you won't encounter this problem!



### TOOLS:

- [Phillips #1 Screwdriver](#) (1)
  - [iFixit Opening Tools](#) (1)
  - [Phillips #00 Screwdriver](#) (1)
  - [Latex or nitrile gloves](#) (1)
  - [Metal Spudger](#) (1)
-


## Step 1 — Back Panel




- Flip the laptop over to the back panel, with the serial numbers facing up.
- Using a Phillips #1 screwdriver, remove the ten 12 mm screws from the back panel.

## Step 2

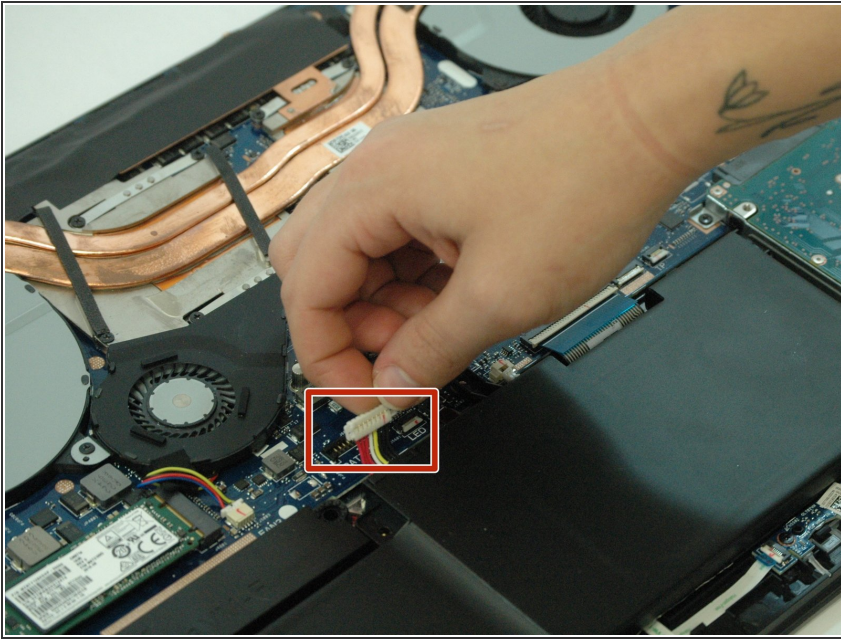


 The snap seals don't need a lot of pressure to open, and may break if forced. Be gentle with the opening tool.

- Wedge the sharp edge of the plastic opening tool into the seam between the back panel and the rest of the laptop, then gently pry the panel up.
  -  There will be a snapping sound as you remove the back panel, but that is just the seal loosening.
- Continue breaking the seals by sliding the plastic opening tool around the entire laptop under the seam until the back panel is free.
- Once you have broken all the seals, carefully lift the panel off.

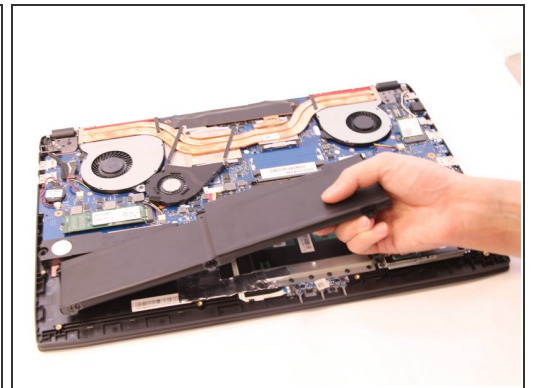
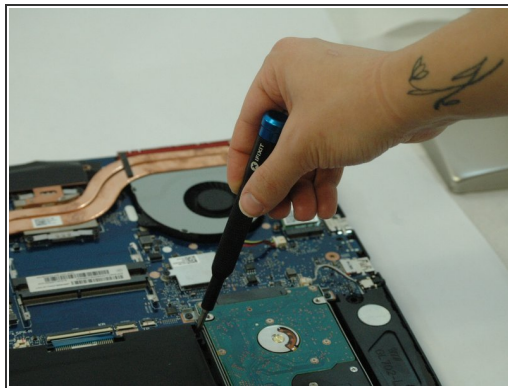
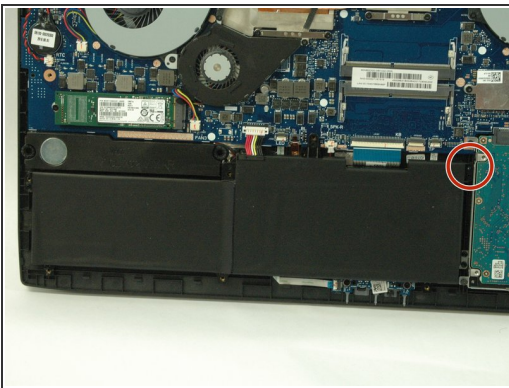


## Step 3 — Battery



- Unplug the battery from the motherboard.

## Step 4



- Unscrew the 3.8 mm Phillips #1 screw on the top right hand corner of the battery.
- Lift battery from laptop frame.

## Step 5 — Wifi Card



- Using the iFixit Opening Tool, disconnect the black and white coaxial cables from the wifi card.
- Using a Phillips #1 screwdriver, remove the 4mm retaining screw.
- Gently slide the wifi card out from the connection slot.

To reassemble your device, follow these instructions in reverse order.