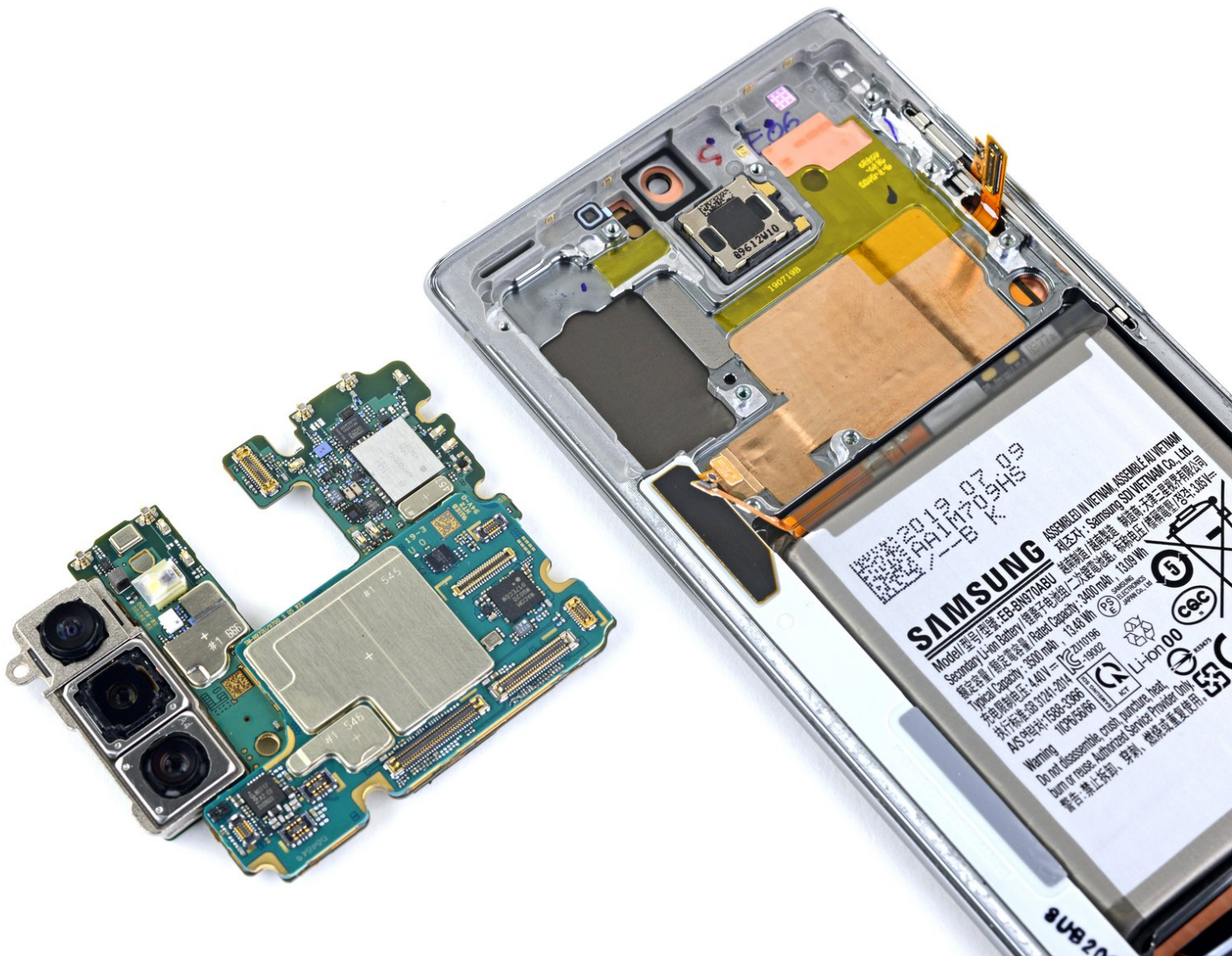




Samsung Galaxy Note10 Motherboard Replacement

How to remove or replace the motherboard on a Samsung Galaxy Note10.

Written By: Carsten Frauenheim



INTRODUCTION

Use this guide to remove or replace the motherboard on your Samsung Galaxy Note10.



TOOLS:

- [iOpener](#) (1)
- [iFixit Opening Picks \(Set of 6\)](#) (1)
- [Suction Handle](#) (1)
- [Spudger](#) (1)
- [Tweezers](#) (1)
- [Phillips #00 Screwdriver](#) (1)
- [SIM Card Eject Tool](#) (1)



PARTS:

- [Galaxy Note10 Rear Cover Adhesive](#) (1)

Step 1 — Heat the back panel



⚠ Completely power off your phone before you begin disassembly.

- [Prepare an iOpener](#) and apply it to the left edge of the back panel for one minute.
- ⓘ A hair dryer, heat gun, or hot plate may also be used, but be careful not to overheat the phone—the display and internal battery are both susceptible to heat damage.

Step 2 — Insert an opening pick



- Apply a suction cup to the heated edge of the back panel, as close to the edge as possible.
 - ❗ If your back glass is badly cracked, covering it with a layer of clear packing tape may allow the suction cup to adhere. Alternatively, very strong tape may be used instead of the suction cup. If all else fails, you can superglue the suction cup to the broken panel.
- Pull up on the suction cup with strong, steady force to create a gap between the back panel and the frame.
 - ❗ Depending on the age of your phone, this may be difficult. If you are having trouble, apply more heat to the edge and try again.
- Insert the point of an opening pick into the gap.

Step 3 — Begin to slice the adhesive



- Slide the opening pick along the left edge towards the bottom left corner to slice the adhesive.
⚠ Do not insert the opening pick more than halfway into the phone or you risk damaging internal components.
- Leave the pick inserted in the bottom left corner to prevent the adhesive from re-sealing.

Step 4 — Slice the left side adhesive



- Insert a second opening pick and slide it across the left side towards the top left corner to slice the adhesive.
- Leave the pick inserted in the top left corner to prevent the adhesive from re-sealing.

Step 5 — Slice the top side adhesive



- Prepare an iOpener and apply it to the top edge of the phone for one minute.

Step 6



- Insert a third opening pick into the gap on the top edge of the phone.
- Slide the opening pick to the top right corner, slicing the adhesive.
- Leave the pick inserted in the top right corner to prevent the adhesive from re-sealing.

Step 7 — Slice the right side adhesive



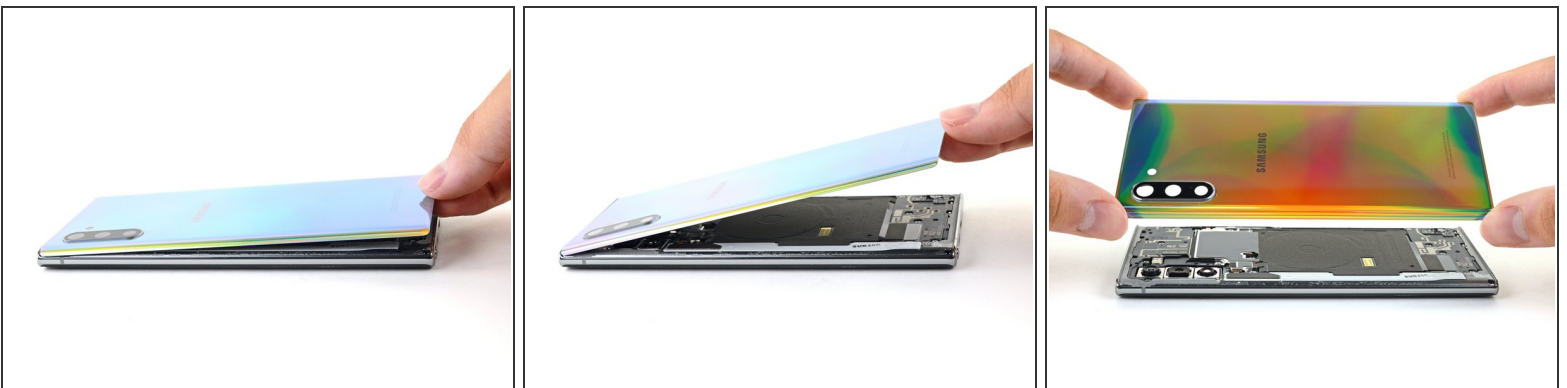
- Prepare an iOpener and apply it to the right edge of the phone for one minute.

Step 8



- Insert a fourth and final opening pick into the gap on the right side of the phone, sliding it down towards the bottom right corner of the phone to slice the adhesive.
- ⓘ The back panel will begin to separate from the phone as you get closer to the bottom edge.
- Slide an opening pick back and forth around the entire perimeter of the phone to release any missed adhesive, reheating if you find any extra-stubborn adhesive.

Step 9 — Lift off the back panel



- Lift up and remove the back panel.

Step 10 — Lift up the metal cover



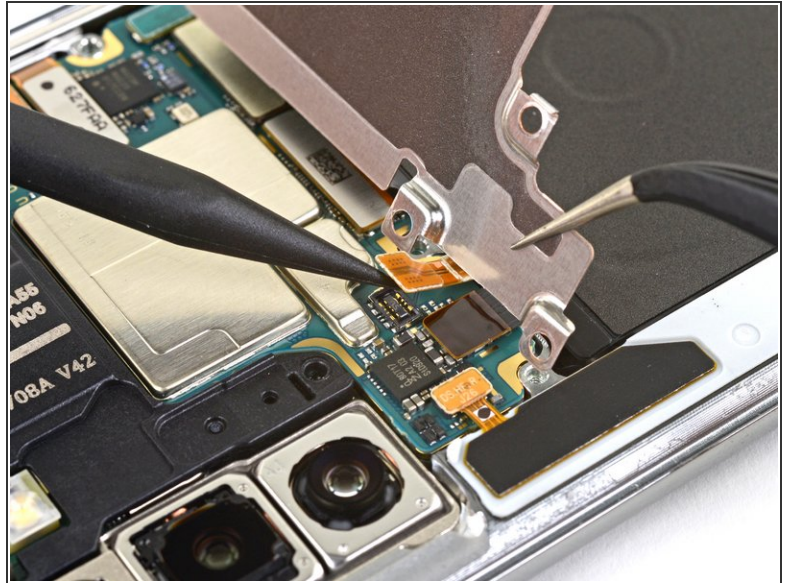
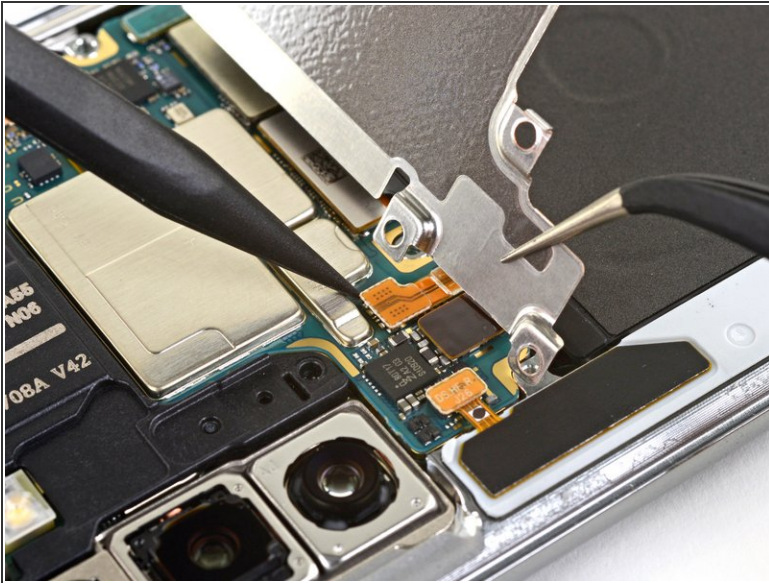
- Use a Phillips screwdriver to remove the five 4 mm screws securing the wireless charging coil.

Step 11



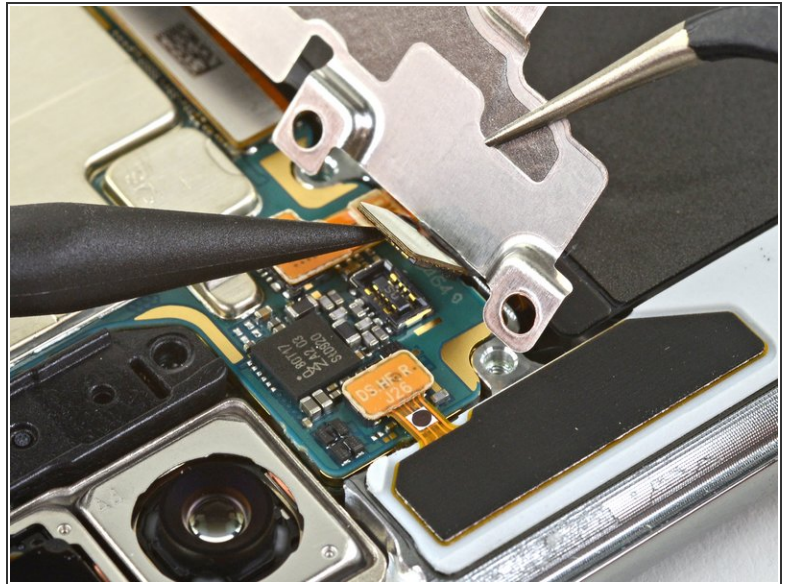
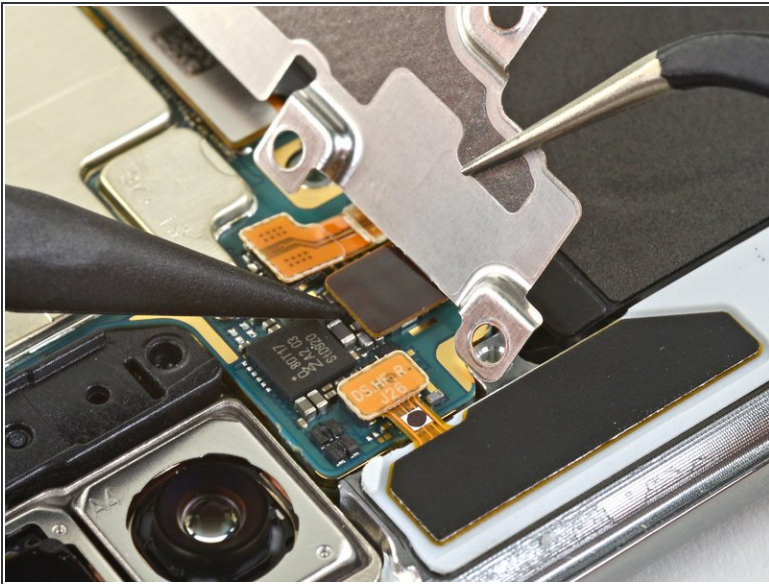
- Use a pair of tweezers to lift up and flip back the metal shield covering the battery connector.

Step 12 — Disconnect the battery



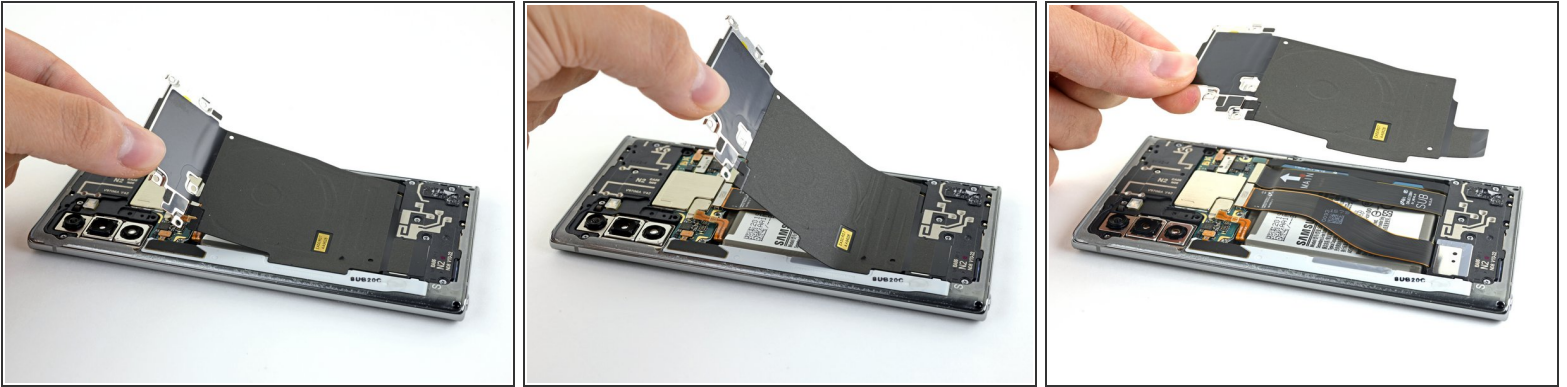
- While holding the metal shield up and out of the way, use the pointed end of a spudger to pry up the battery connector to disconnect it.

Step 13 — Disconnect the wireless charging coil



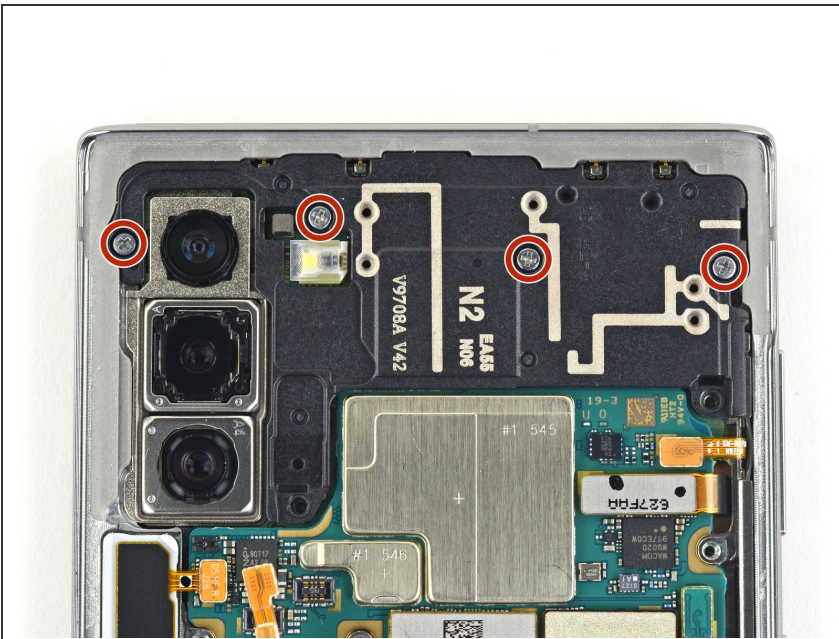
- Use the pointed end of a spudger to disconnect the wireless charging coil connector from the motherboard.

Step 14 — Remove the wireless charging coil



- Tilt the metal shielding up so you can grip it with your fingers.
- Peel the wireless charging coil up and away from the device.
 - ❗ The wireless charging coil is secured to the phone with some light adhesive.
- Remove the wireless charging coil.

Step 15 — Front-Facing Camera



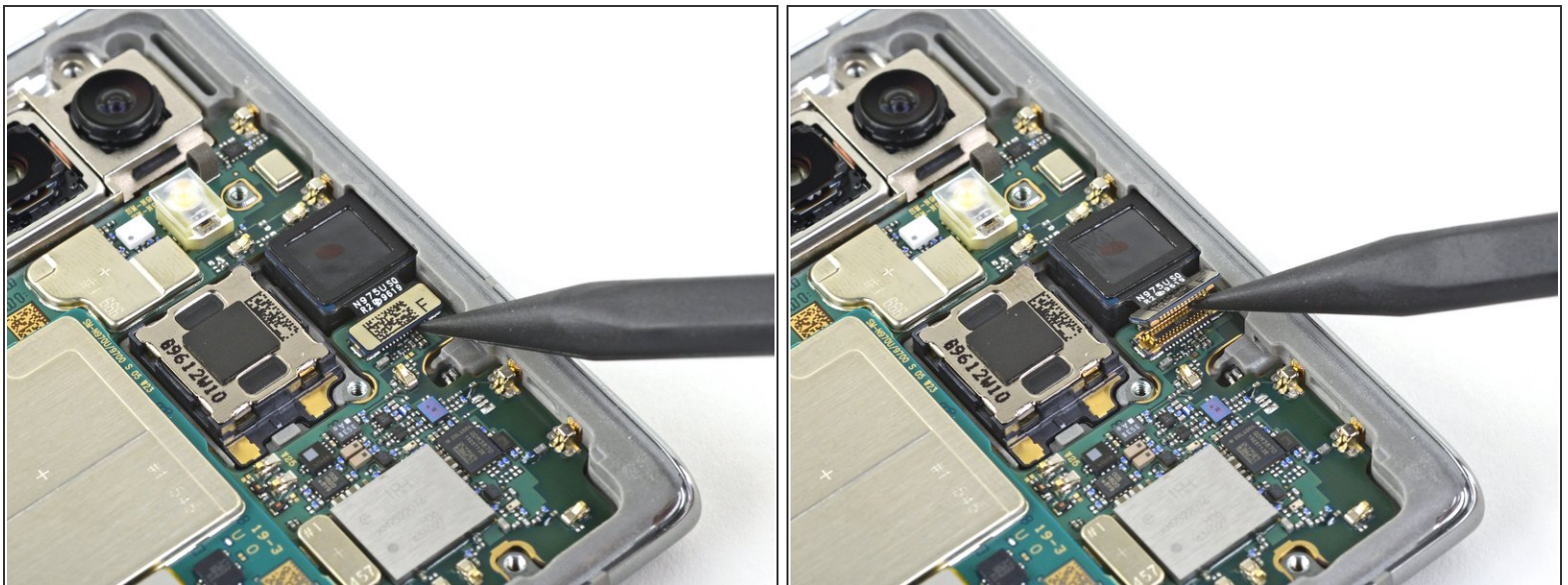
- Use a Phillips screwdriver to remove the four 4 mm screws securing the top plastic cover.

Step 16



- Use a pair of tweezers to pivot the top plastic cover up and off of the phone.

Step 17



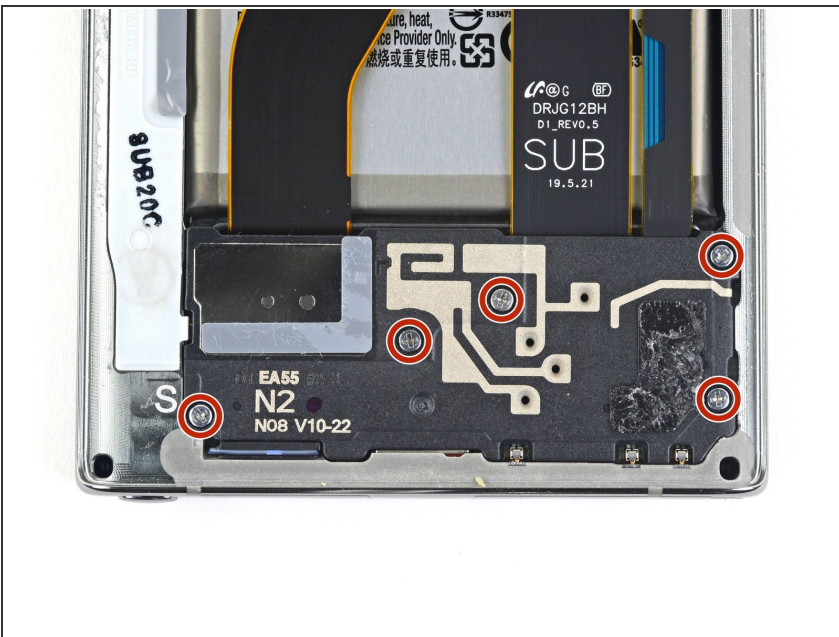
- Use the pointed end of a spudger to pry the front-facing camera connector straight up from the motherboard.

Step 18



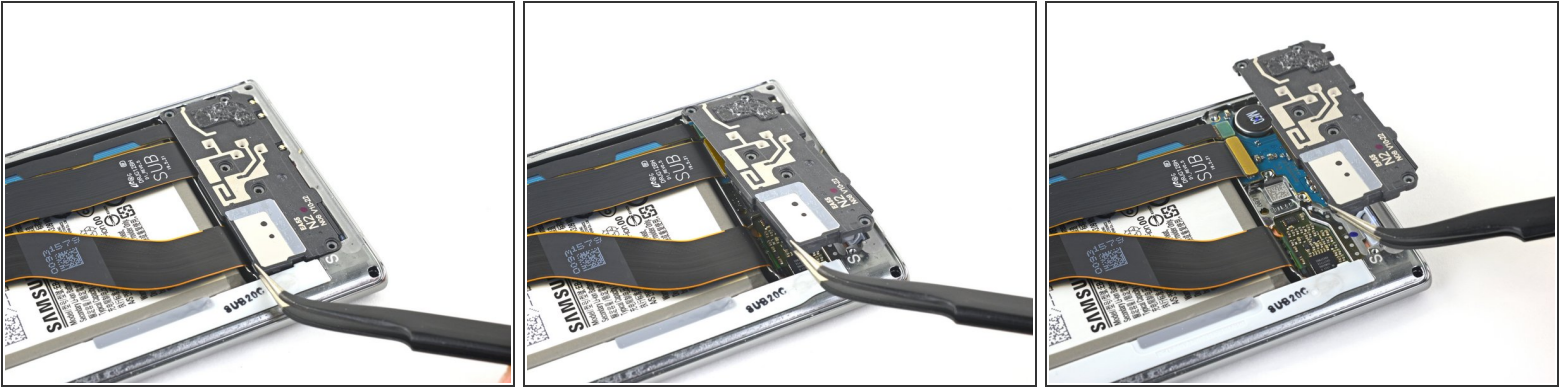
- Remove the front-facing camera.

Step 19 — Remove the loudspeaker screws



- Use a Phillips screwdriver to remove the five 4 mm screws securing the loudspeaker.

Step 20 — Remove the loudspeaker



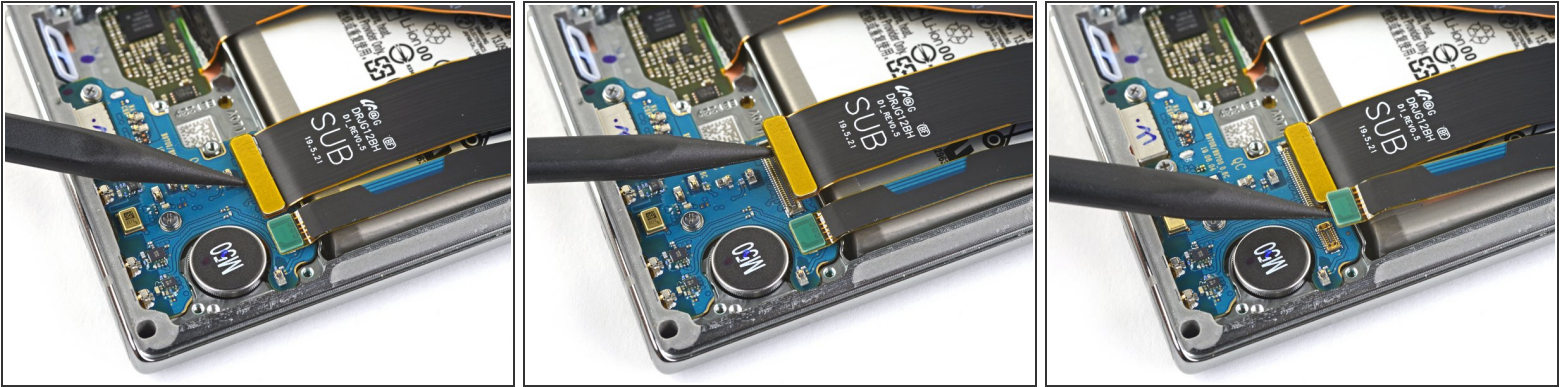
- Use a pair of tweezers to remove the loudspeaker.

Step 21 — Remove the interconnect cables



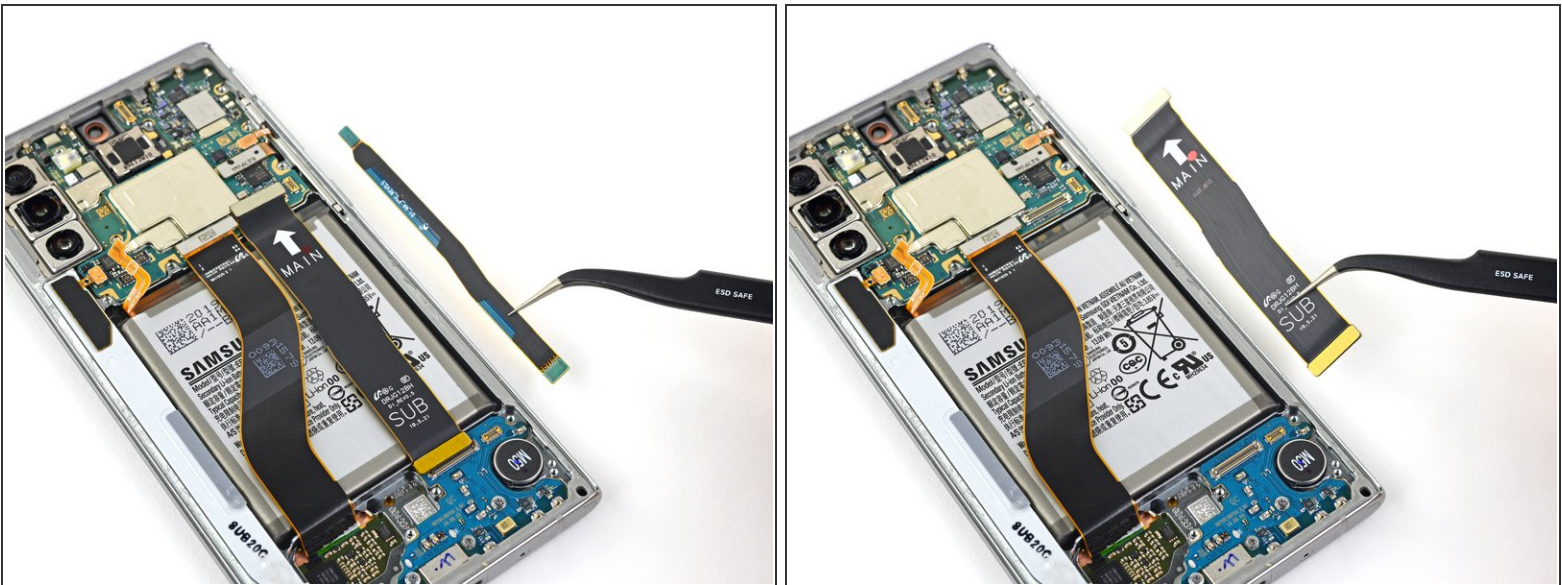
- Use the pointed end of a spudger to disconnect the main interconnect cable from the motherboard.
- Disconnect the secondary interconnect cable from the motherboard.

Step 22



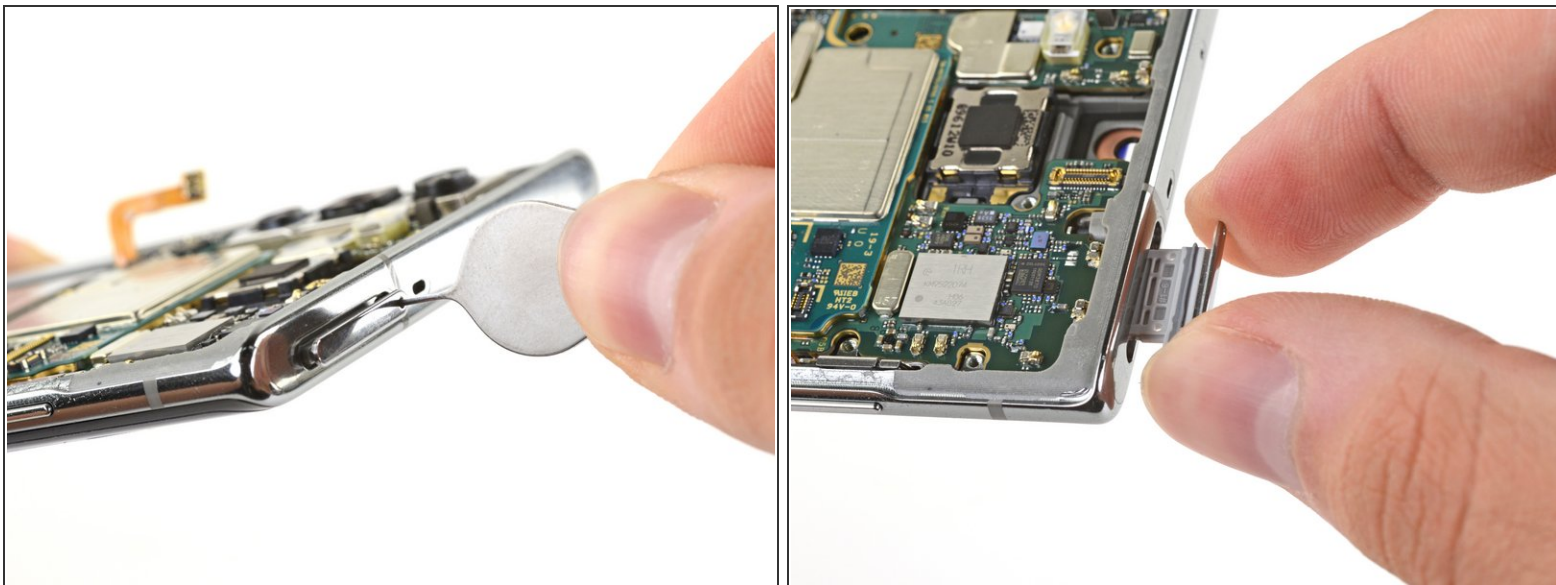
- Use the pointed end of a spudger to disconnect the main interconnect cable from the daughterboard.
- Disconnect the secondary interconnect cable from the daughterboard.

Step 23



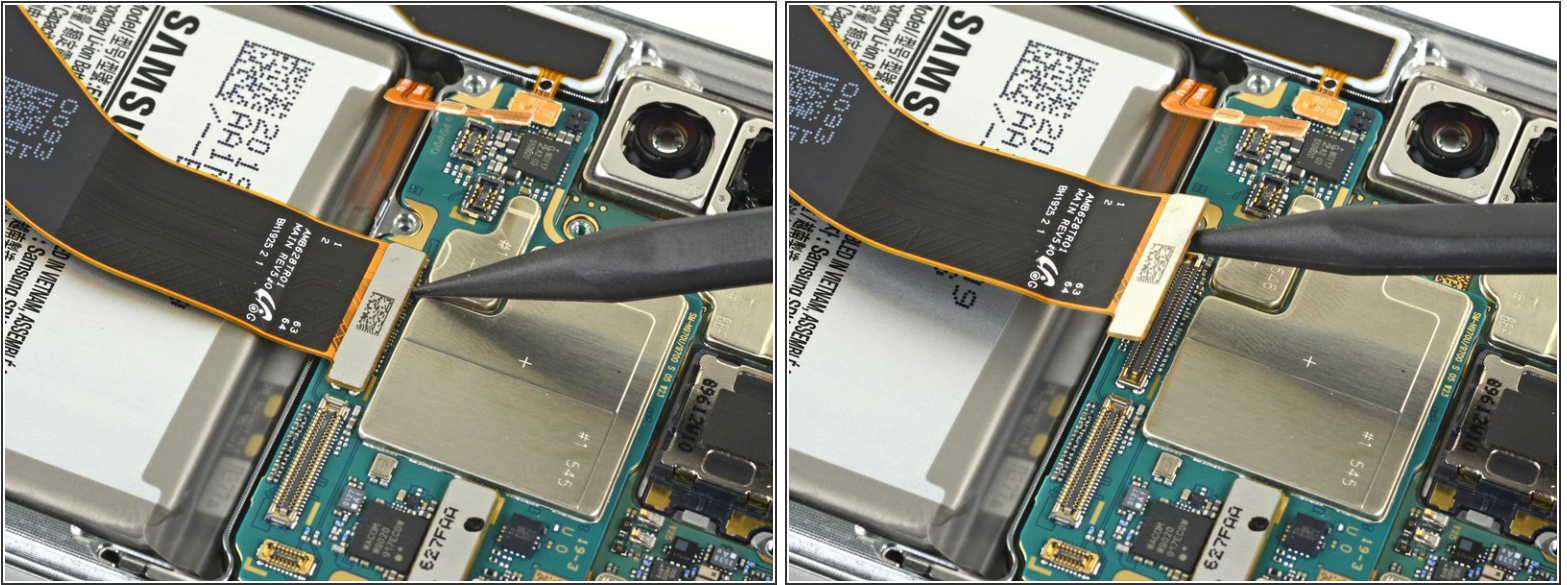
- Remove both interconnect cables.

Step 24 — Remove the SIM card tray



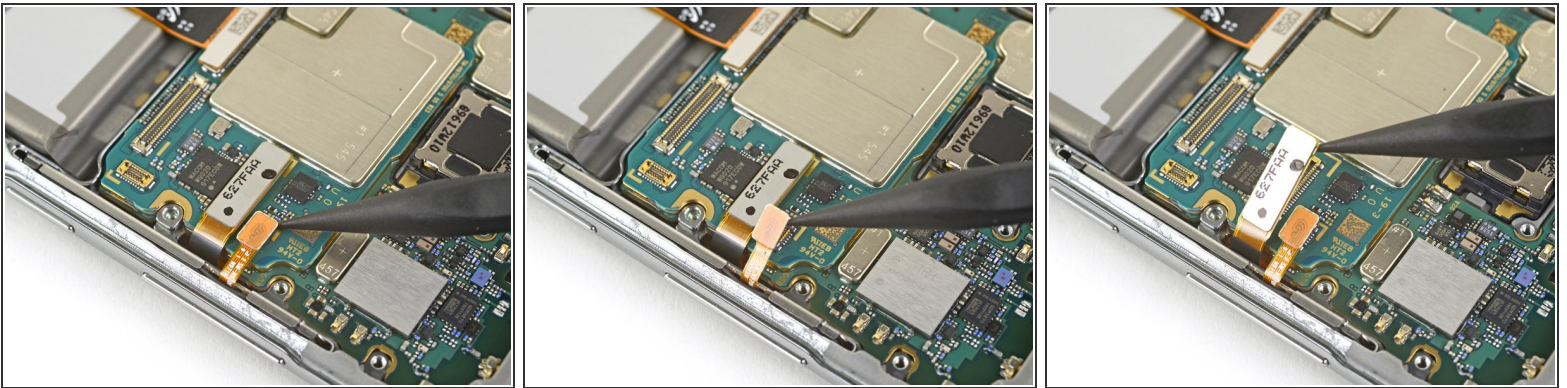
- Insert a SIM eject tool, bit, or a straightened paper clip into the small hole on the SIM card tray on the top edge of the phone.
- Press firmly to eject the tray.
- Remove the SIM card tray.

Step 25 — Disconnect motherboard connectors



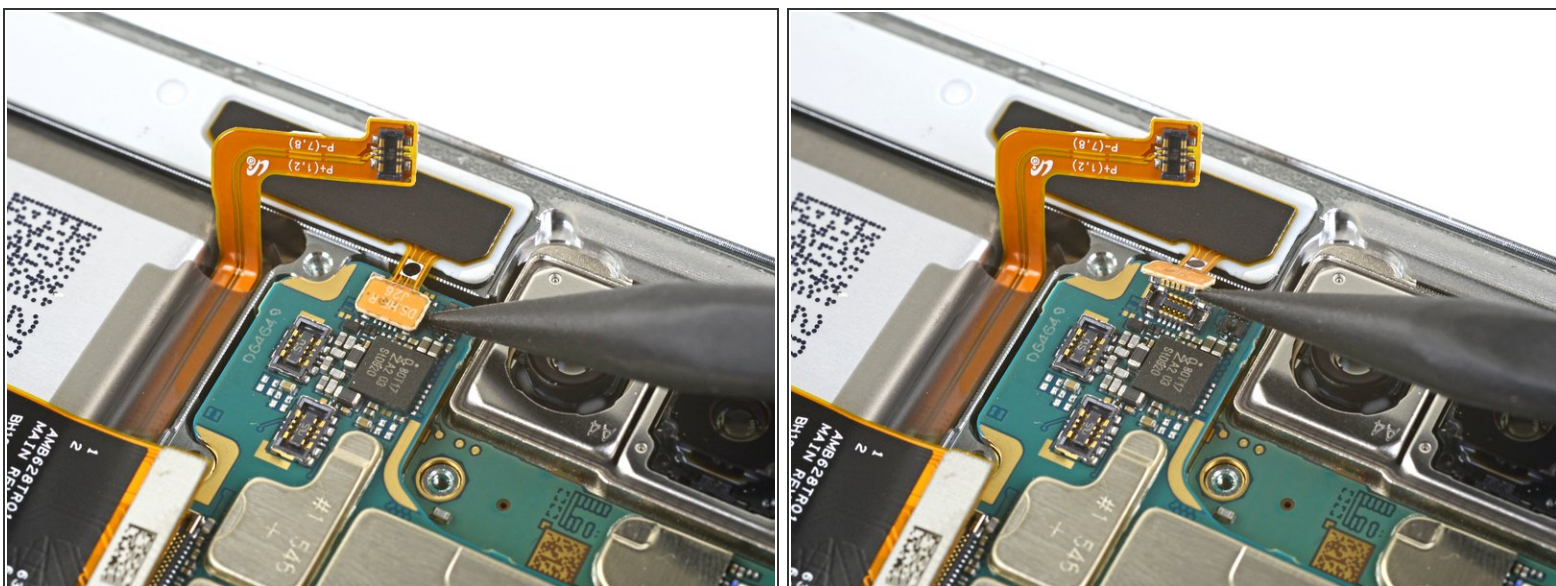
- Use the pointed end of a spudger to disconnect the display cable from the motherboard.

Step 26



- Use the pointed end of a spudger to disconnect the side button connector from the motherboard.
- Disconnect the touch layer connector from the motherboard.

Step 27



- Use the pointed end of a spudger to disconnect the S-Pen charging coil connector from the motherboard.

Step 28 — Remove the motherboard



- Use the pointed end of a spudger to pry up the motherboard enough to grip it with your fingers.
- Remove the motherboard.

Compare your new replacement part to the original part—you may need to transfer remaining components or remove adhesive backings from the new part before installing.

To reassemble your device, follow the above steps in reverse order.

Take your e-waste to an [R2 or e-Stewards certified recycler](#).

Repair didn't go as planned? Try some [basic troubleshooting](#), or ask our [Answers community](#) for help.