



How to Replace the Air Filter for a PARTU BS-03 HEPA Air Purifier

This guide will show you how to remove a dirty or clogged air filter from the PARTU BS-03 HEPA air purifier and replace it with a new, clean filter.

Written By: Ty Washburn



INTRODUCTION

This guide serves to breakdown the steps to replacing the filter of a PARTU BS-03 HEPA Air Purifier. This guide is necessary because a clean filter is essential to keep the air purifier working efficiently, properly, and safely. After several months, the filter will likely accumulate a lot of dust and other particles that can clog up the filter. As the filter becomes more clogged, it has to consume more energy to perform the same amount of work and will eventually filter and purify less air. By knowing how to properly replace the filter, users can rest assured that they are getting optimal use of their PARTU BS-03 HEPA Air Purifier.

Note: this guide only applies to the replacement of the filter of a PARTU BS-03 HEPA Air Purifier and not all air purifiers.



TOOLS:

- [Compressed Air](#) (1)
- [Sanitizer Wipes](#) (1)



PARTS:

- [BS-03 HEPA replacement air filter](#) (1)

Step 1 — Air Filter



- Press the ON/OFF button to power off the machine.
- i** The machine is off when the LED light above the ON/OFF button is red.

Step 2



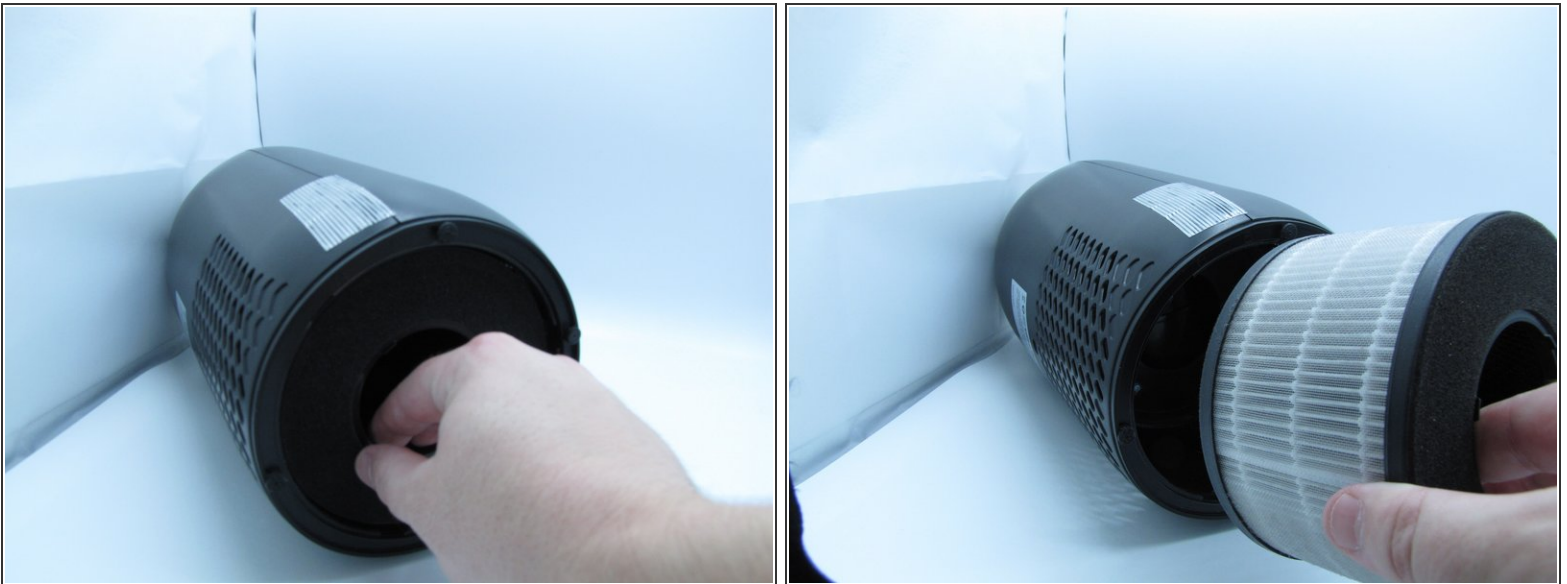
- Remove the power cord from the back of the machine.

Step 3



- On the bottom of the machine, turn the filter cover counter-clockwise.
- Remove the filter cover.

Step 4



- Remove the filter from the filter compartment.

Step 5



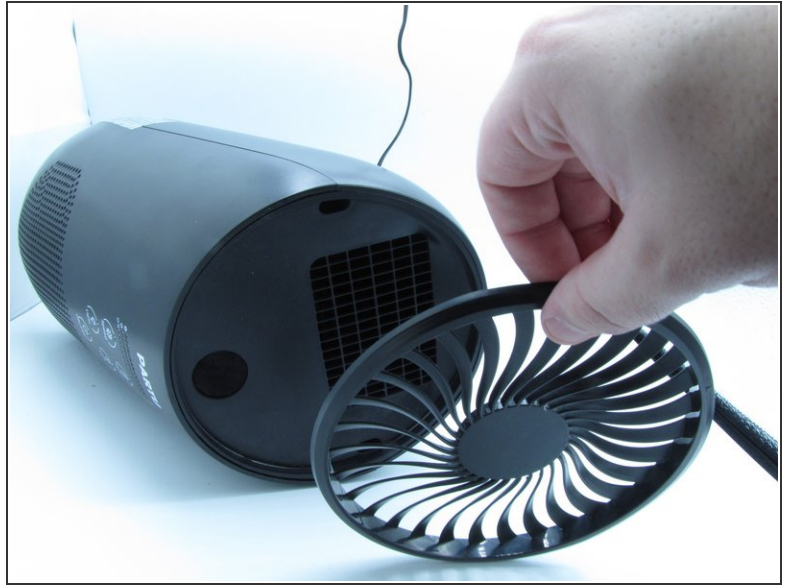
- Using the can of compressed air, spray any loose dust out of the empty filter compartment.

Step 6



- Using a sanitizer wipe, wipe down the inside of the empty filter compartment.

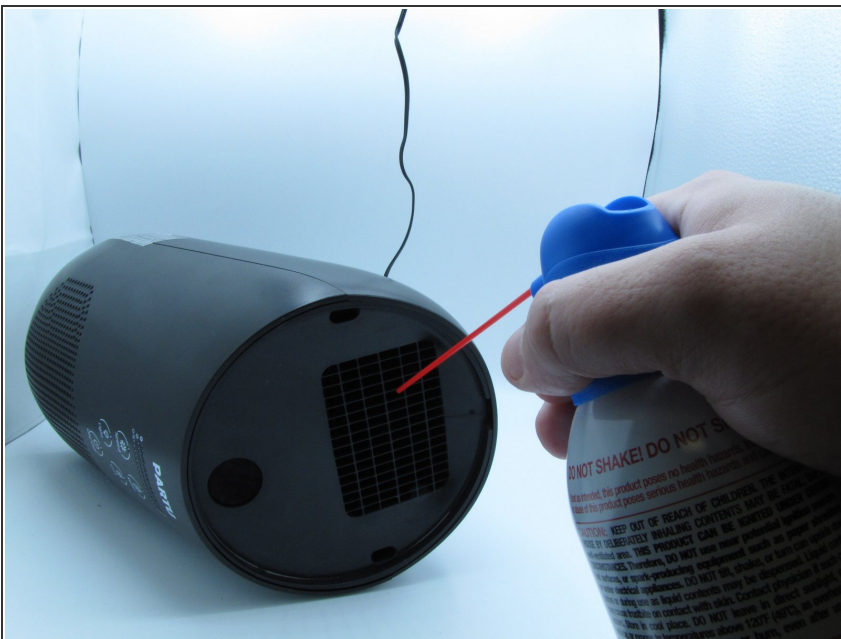
Step 7



- On the top of the machine, remove the fan cover.

i Unlike the filter cover, the fan cover can be pried straight off without turning it.

Step 8



- Using the can of compressed air, spray any dust out of the fan compartment.

To reassemble the air purifier machine, follow these instructions in reverse order.