



# Samsung Galaxy Note10+ Battery Replacement

Use this guide to remove or replace the battery...

Written By: Carsten Frauenheim



## INTRODUCTION

Use this guide to remove or replace the battery on your Samsung Galaxy Note10+. If your battery is swollen, [take appropriate precautions](#).

**For your safety, discharge your battery below 25% before disassembling your phone.** This reduces the risk of a dangerous thermal event if the battery is accidentally damaged during the repair.



### TOOLS:

- [iOpener](#) (1)
- [iFixit Opening Picks \(Set of 6\)](#) (1)
- [Suction Handle](#) (1)
- [Spudger](#) (1)
- [Tweezers](#) (1)
- [Phillips #00 Screwdriver](#) (1)
- [Isopropyl Alcohol \(90% or Greater\)](#) (1)



### PARTS:

- [Galaxy Note10 Plus Replacement Battery](#) (1)
- [Galaxy Note10+ Battery Adhesive](#) (1)
- [Galaxy Note10+ Rear Cover Adhesive](#) (1)

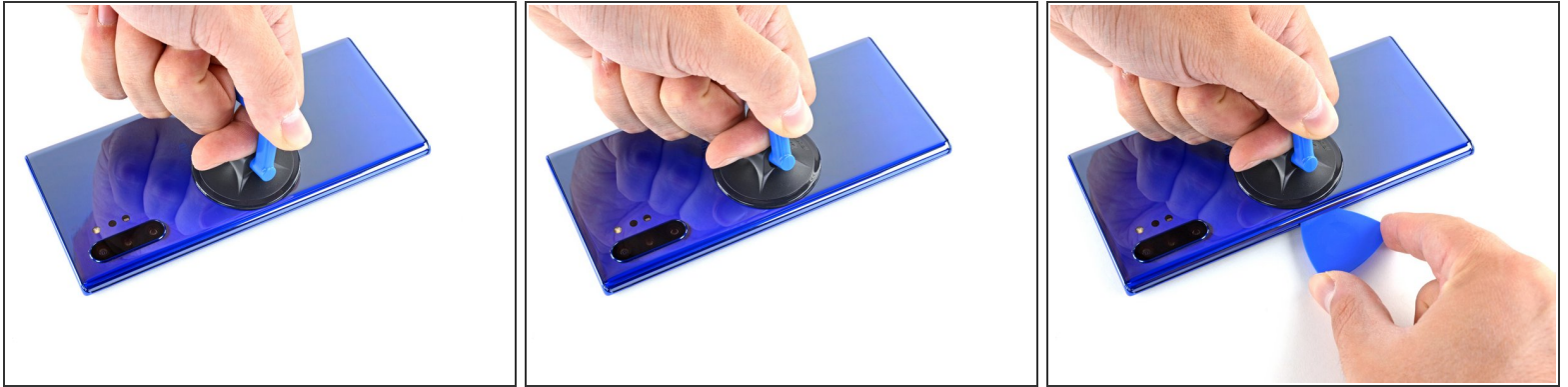
## Step 1 — Heat the rear cover



**⚠** Completely power off your phone before you begin disassembly.

- [Prepare an iOpener](#) and apply it to the left edge of the rear cover for one minute.
- ⓘ A hair dryer, heat gun, or hot plate may also be used, but be careful not to overheat the phone—the display and internal battery are both susceptible to heat damage.

## Step 2 — Insert an opening pick



- Apply a suction cup to the heated edge of the rear cover, as close to the edge as possible.
  - ❗ If your rear cover is badly cracked, covering it with a layer of clear packing tape may allow the suction cup to adhere. Alternatively, very strong tape may be used instead of the suction cup. If all else fails, you can superglue the suction cup to the broken cover.
- Pull up on the suction cup with strong, steady force to create a gap between the rear cover and the frame.
  - ❗ Depending on the age of your phone, this may be difficult. If you are having trouble, apply more heat to the edge and try again.
- Insert the point of an opening pick into the gap.

### Step 3 — Begin to slice the adhesive



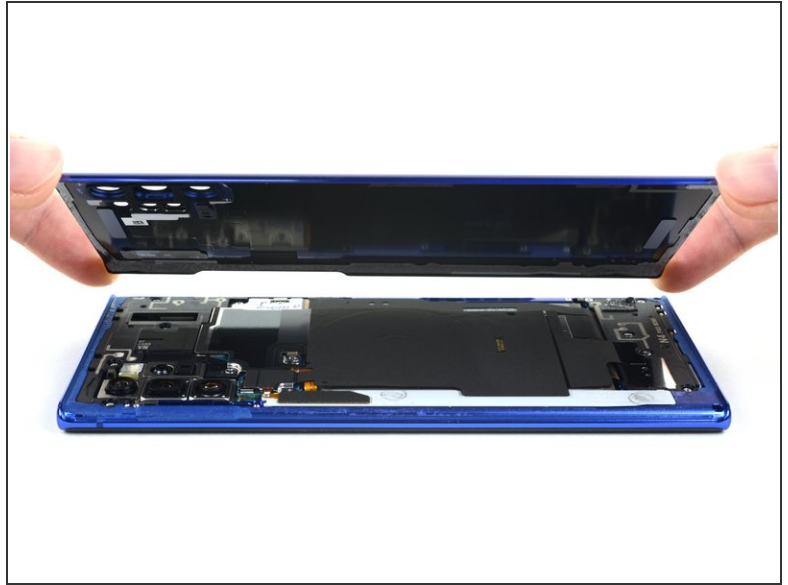
- Slide the opening pick along the left edge towards the bottom left corner to slice the adhesive.  
**⚠ Don't insert the opening pick more than halfway into the phone or you risk damaging internal components.**
- Leave the pick inserted in the bottom left corner to prevent the adhesive from re-sealing.

### Step 4 — Slice around the perimeter of the phone



- Repeat the previous heating and cutting procedure for the remaining three sides of the phone.
  - Leave an opening pick on each side as you continue to the next to prevent the adhesive from resealing.
- i** The rear cover will begin to separate from the phone as you finish all sides of the phone.

## Step 5 — Lift off the rear cover



- Lift the rear cover straight up to remove it.

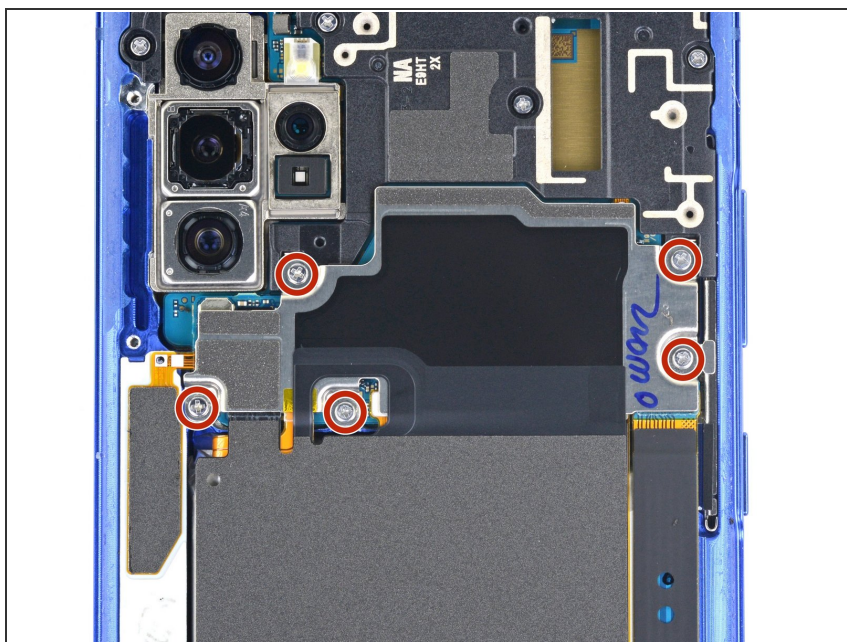
✦ [Follow this guide](#) to reinstall the rear cover and replace the adhesive.

ⓘ Be sure to turn on your device and test your repair before installing new adhesive and resealing the device.

✦ If you're using Tesa tape to reattach components, [follow this guide](#).

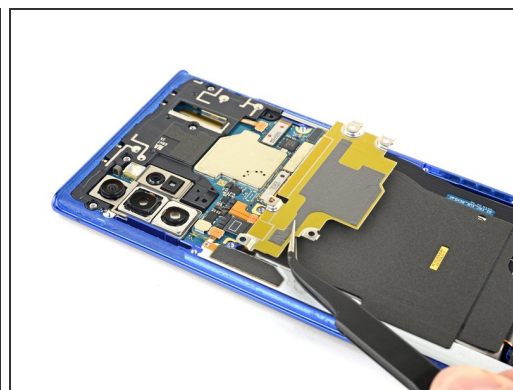
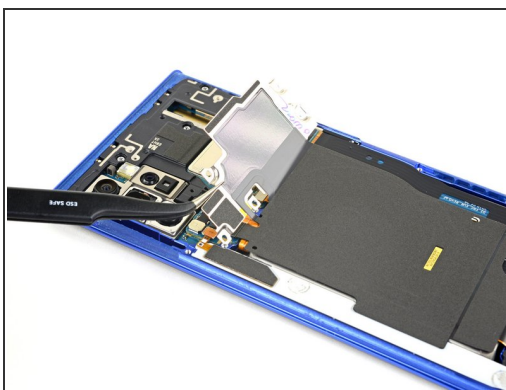
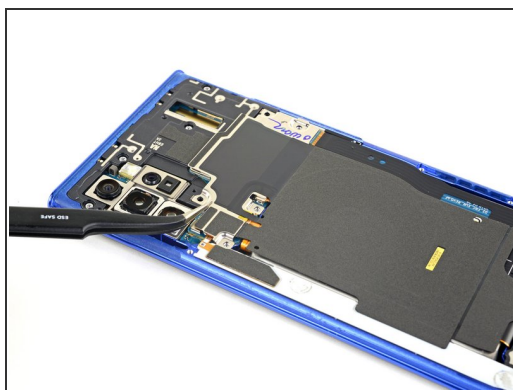


## Step 6 — Lift up the metal cover



- Use a Phillips screwdriver to remove the five 4 mm screws securing the wireless charging coil.

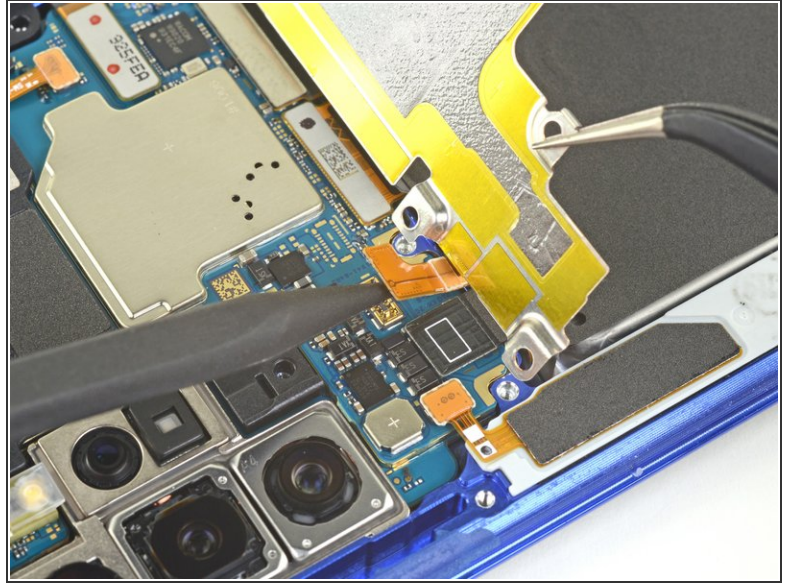
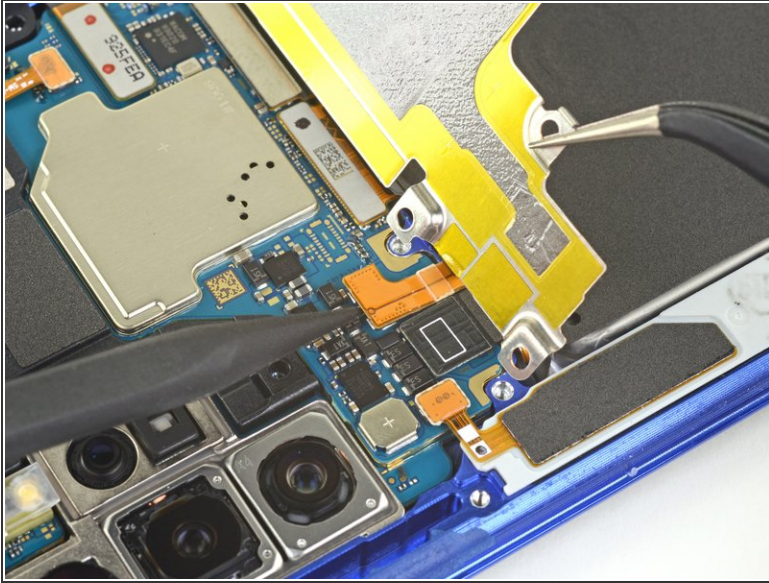
## Step 7



- Use a pair of tweezers to lift up and flip back the metal shield covering the battery connector.

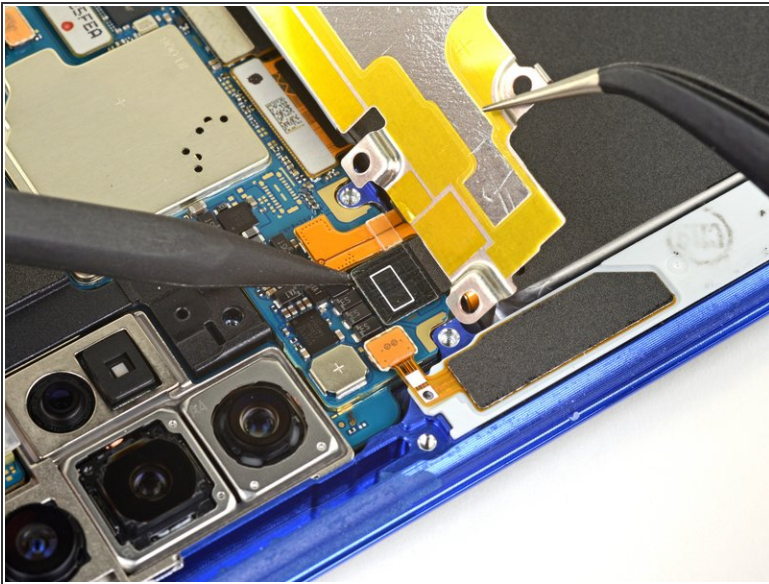


## Step 8 — Disconnect the battery



- While holding the metal shield up and out of the way, use the pointed end of a spudger to pry up the battery connector to disconnect it.

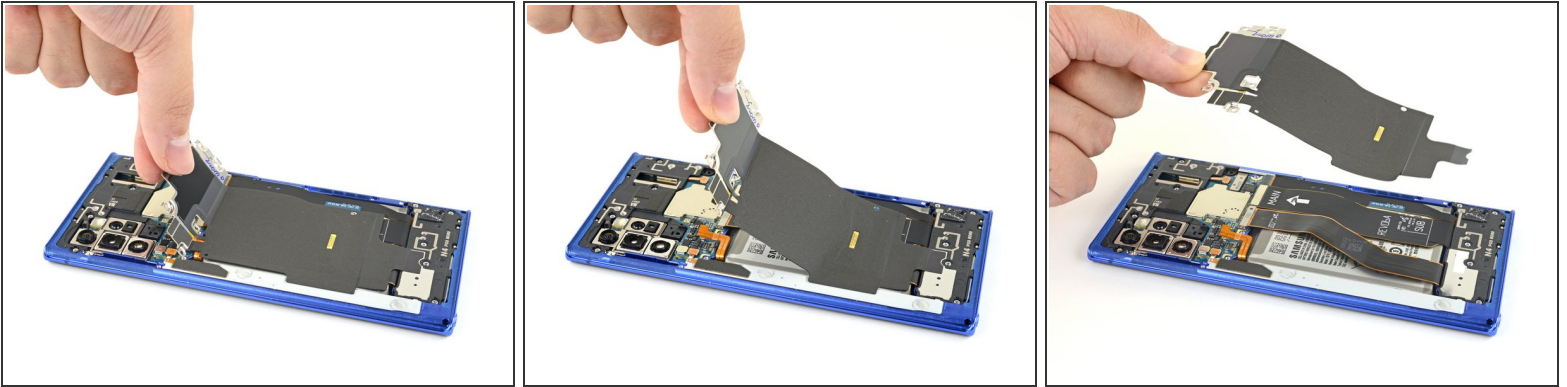
## Step 9 — Disconnect the wireless charging coil



- Use the pointed end of a spudger to disconnect the wireless charging coil connector from the motherboard.



## Step 10 — Remove the wireless charging coil



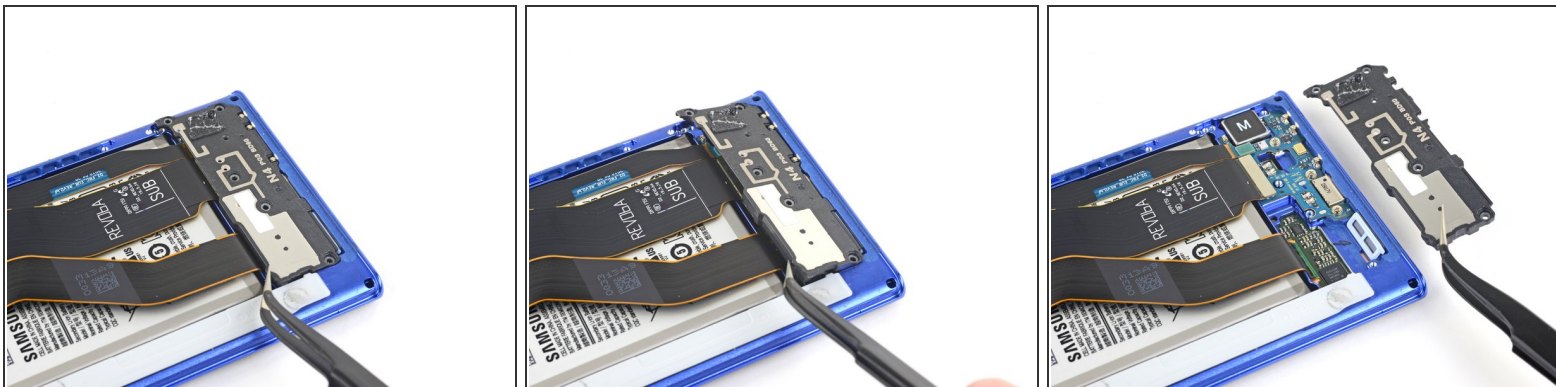
- Tilt the metal shielding up so you can grip it with your fingers.
- Peel the wireless charging coil up and away from the device.
  - ❗ The wireless charging coil is secured to the phone with some light adhesive.
- Remove the wireless charging coil.

## Step 11 — Remove the loudspeaker screws



- Use a Phillips screwdriver to remove the five 4 mm screws securing the loudspeaker.

## Step 12 — Remove the loudspeaker



- Use a pair of tweezers to remove the loudspeaker.

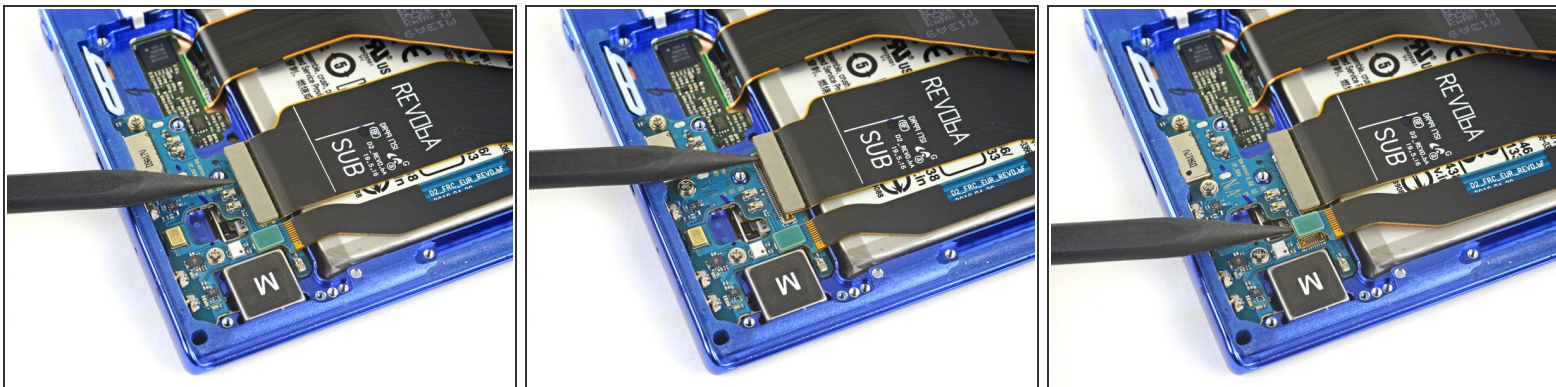
## Step 13 — Remove the interconnect cables



- Use the pointed end of a spudger to disconnect the main interconnect cable from the motherboard.
- Disconnect the secondary interconnect cable from the motherboard.

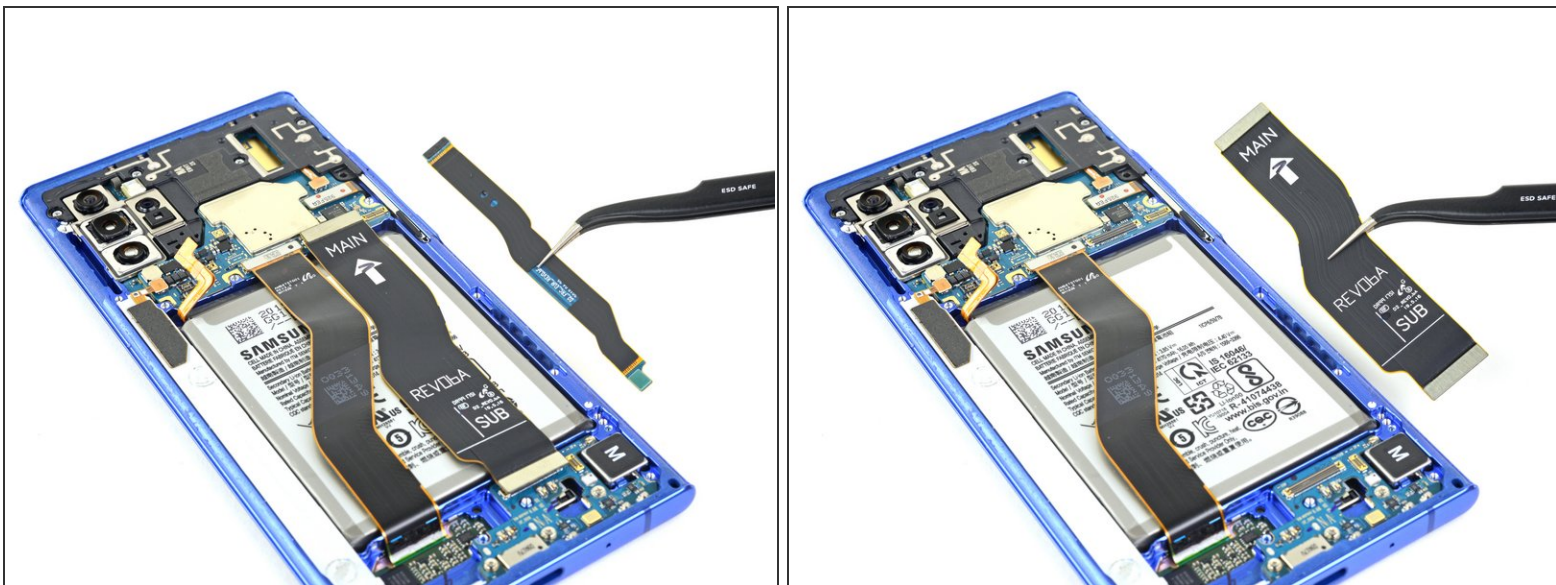


## Step 14



- Use the pointed end of a spudger to disconnect the main interconnect cable from the daughterboard.
- Disconnect the secondary interconnect cable from the daughterboard.

## Step 15



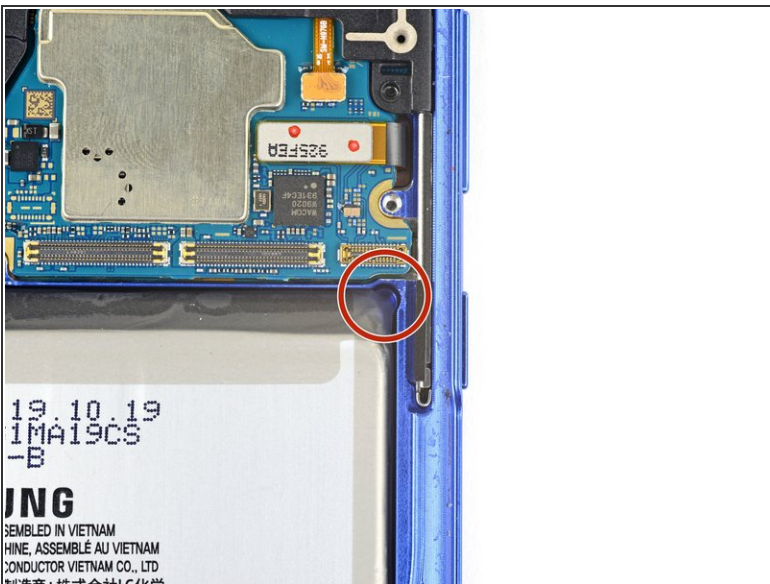
- Remove both interconnect cables.

## Step 16 — Disconnect the display cable



- Use the pointed end of a spudger to disconnect the display cable connector from the motherboard.

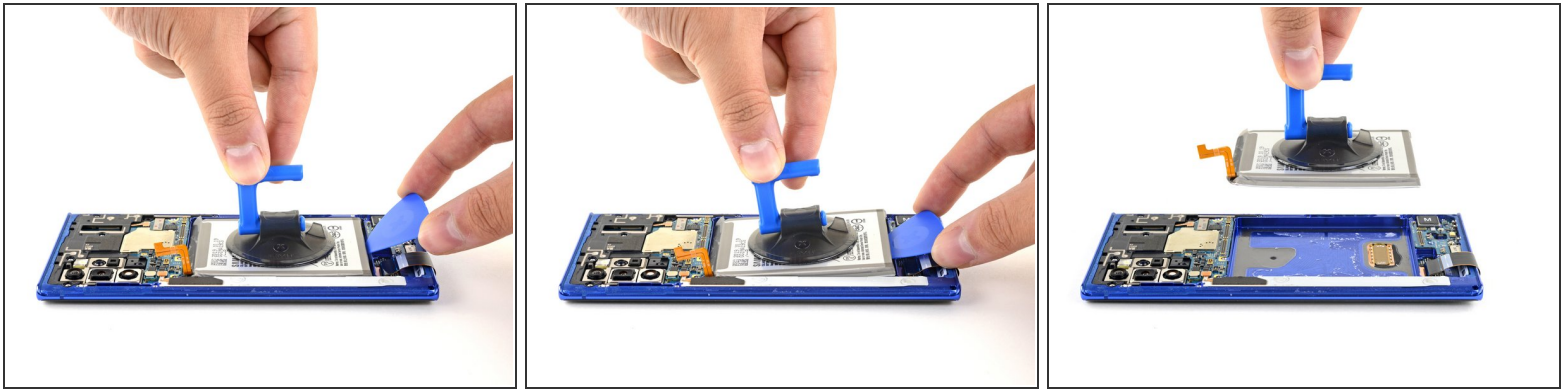
## Step 17 — Loosen the battery adhesive



- Apply a few drops of high concentration (90% or greater) isopropyl alcohol underneath the battery at the tear-shaped indents near the corners of the battery well.
- Wait about two minutes for the isopropyl alcohol to penetrate and weaken the battery adhesive before you proceed to the next step.



## Step 18 — Remove the battery



- Apply a suction cup to the back of the battery.
- Pull up on the suction cup with strong, steady force to begin to separate the battery from the frame.
  - ❗ If this is difficult, apply a few more drops of isopropyl alcohol underneath the battery, let it sit for two minutes, and try again.
- Insert the point of an opening pick into the gap created between the battery and frame.
  - ⚠ **Don't insert the opening pick more than halfway or you risk damaging the fingerprint sensor underneath.**
- Pull up on the suction cup to remove the battery.
  - ❗ The battery will come out without much force once the isopropyl alcohol has adequately penetrated the battery adhesive.
- ☑ When you're reassembling your phone, remove the old adhesive and apply [stretch release adhesive strips](#), double sided adhesive tape, or [pre-cut adhesive](#) to secure the new battery.

For optimal performance, [calibrate your newly installed battery](#) after completing this guide.

Compare your new replacement part to the original part—you may need to transfer remaining components or remove adhesive backings from the new part before installing.

**To reassemble your device, follow the above steps in reverse order.**

Take your e-waste to an [R2 or e-Stewards certified recycler](#).

Repair didn't go as planned? Try some [basic troubleshooting](#), or ask our [Answers community](#) for help.

