



Samsung SCH-8500 Teardown

Teardown of Samsung SCH-8500

Written By: William Maddrey



INTRODUCTION

This is a teardown of the Samsung SCH-8500.



TOOLS:

- [Phillips #00 Screwdriver](#) (1)
 - [Metal Spudger](#) (1)
 - [T6 Torx Screwdriver](#) (1)
 - [iFixit Opening Tools](#) (1)
-

Step 1 — Samsung SCH-8500 Teardown



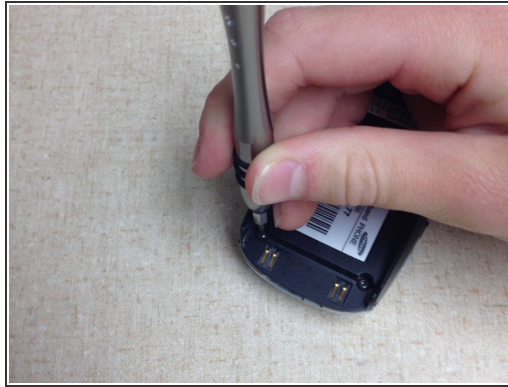
- The phone we are taking apart today is the Samsung SCH-8500

Step 2



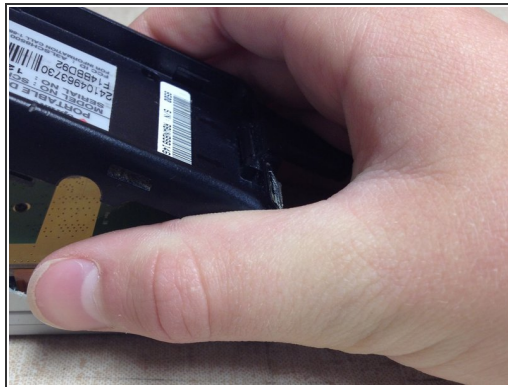
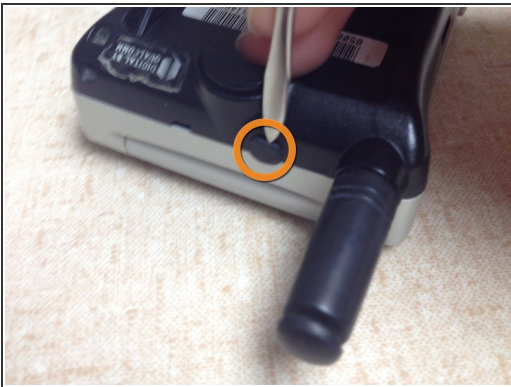
- Press on black button next to battery and use metal spudger or other pointy object to pop the battery of the back.

Step 3



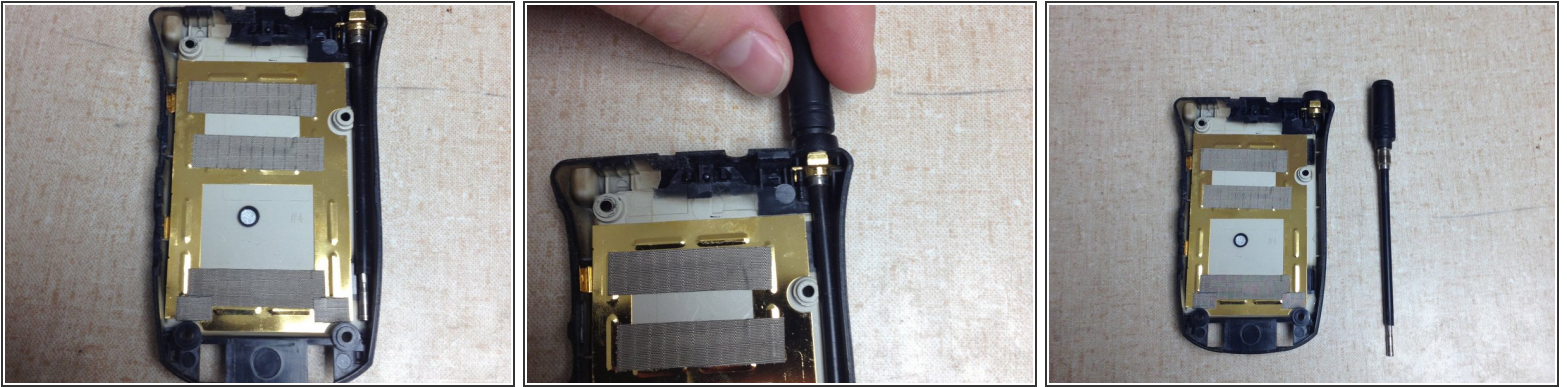
- Remove 4 0.6mm screws with a T6 Screwdriver.

Step 4



- Remove the little rubber piece.
- Then gently lift off back case.

Step 5



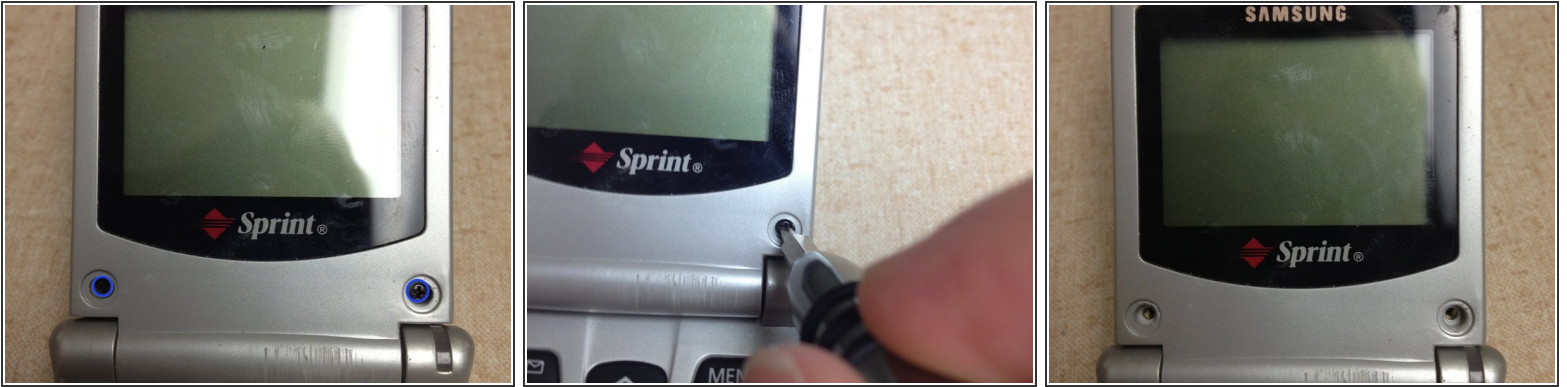
- Unscrew the antenna from back case.

Step 6



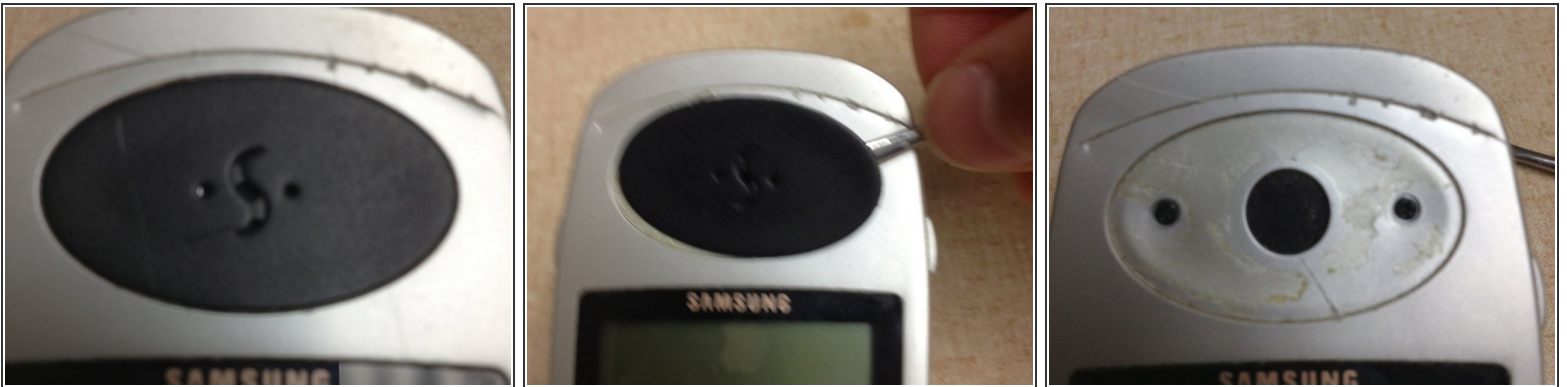
- Pry off the 2 covers on the display.

Step 7



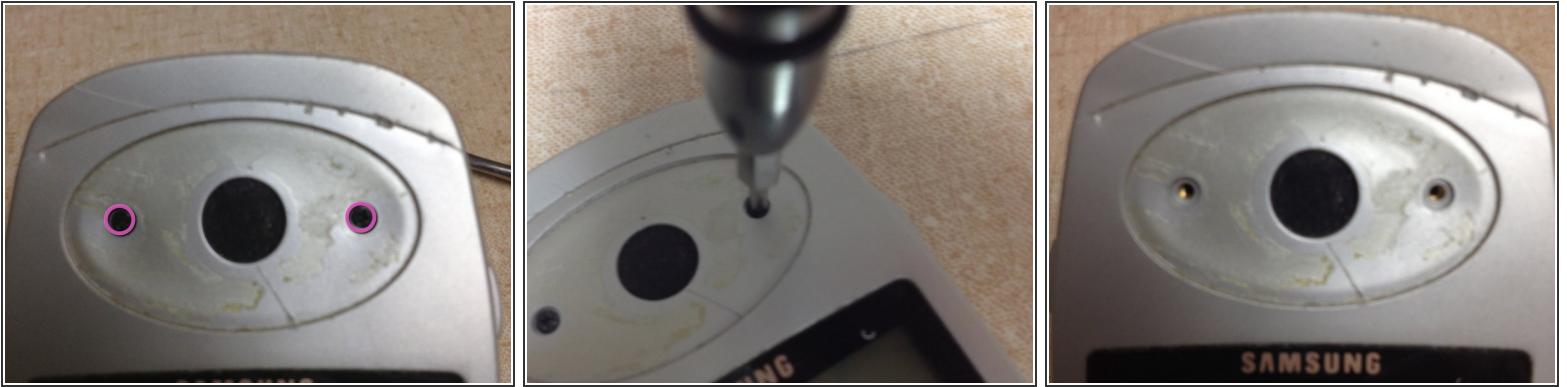
- Remove the 2 0.3mm screws from display

Step 8



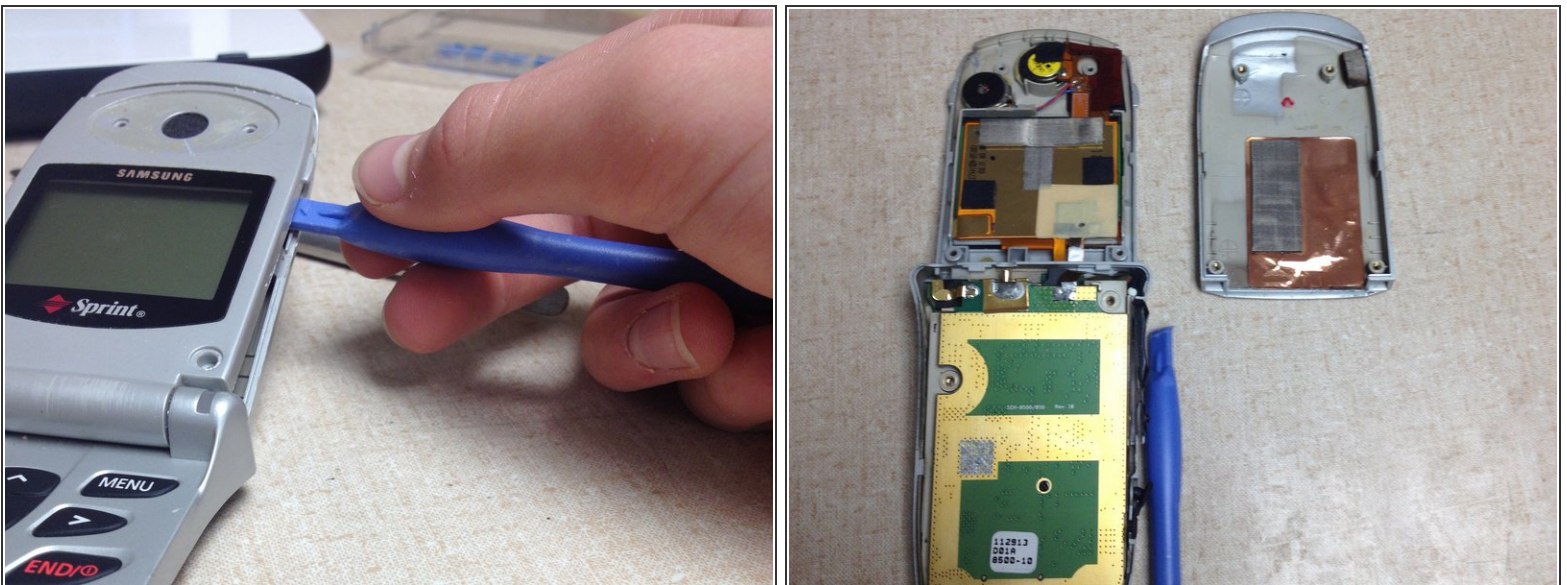
- Pry the speaker cover off display, to reveal 2 screws.

Step 9



- Remove 2 0.3mm screws.

Step 10



- Use a case opening tool and pry the case of the display.

Step 11



- Pry the display, speakers, and main board of of phone
- Take off the keys

Step 12



- Voila! You're done.

To reassemble your device, follow these instructions in reverse order.