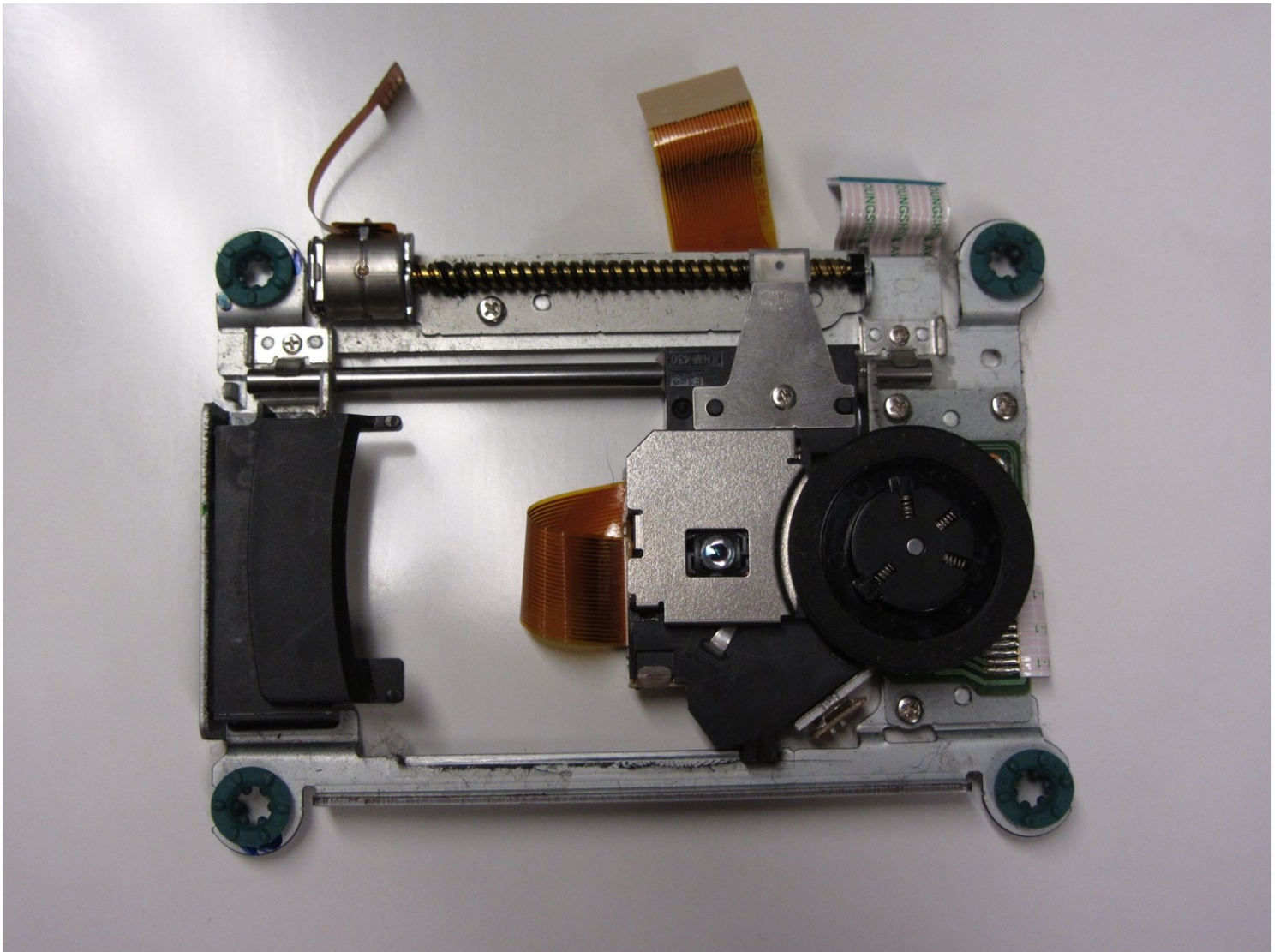




PlayStation 2 Slimline SCPH-7500x Optical Drive Replacement

This guide will walk you through step-by-step...

Written By: Jared Hirata



INTRODUCTION

This guide will walk you through step-by-step on how to properly remove and install the optical drive in the PlayStation 2 Slimline.

TOOLS:

[Tweezers](#) (1)

[Phillips #1 Screwdriver](#) (1)

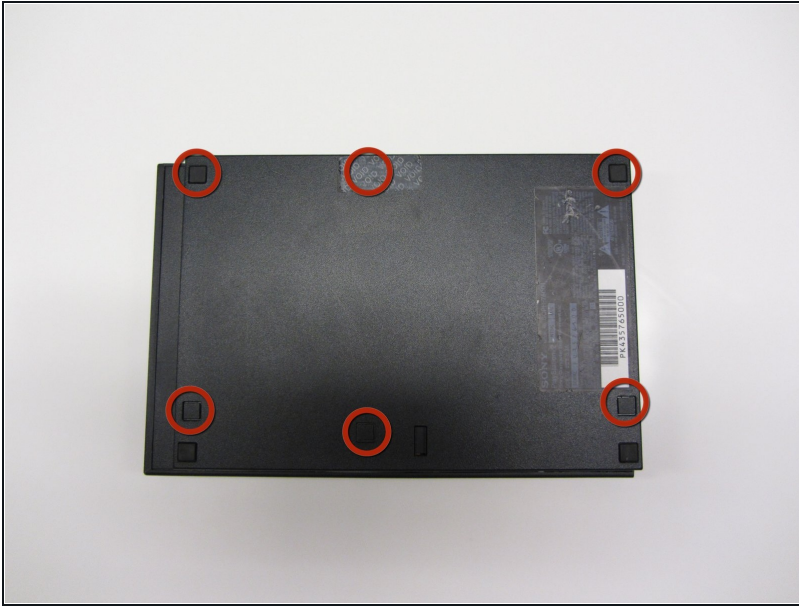
[Spudger](#) (1)

Step 1 — Removing Playstation 2 Slimline SCPH-7500x Outer Shell



- Turn off the PlayStation 2 and carefully unplug it from the power source. Also, it is important to eject the CD from the console before flipping the it upside down.

Step 2



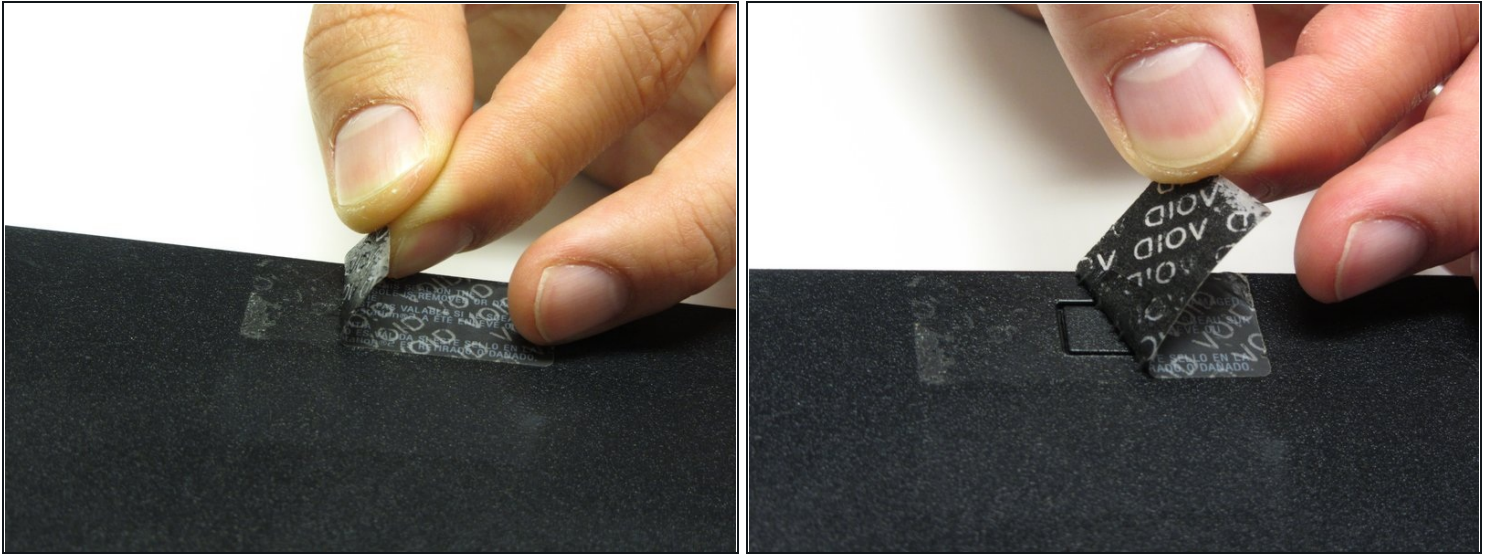
- Locate the six feet on the bottom of the PS2.
- ① Five of these feet are in plain sight while the last foot is located under the black void sticker on the back of the device.
- ① Some versions of the console, such as the PAL Version, may not have this sticker. In this case, the foot or the screw should be in plain sight.

Step 3



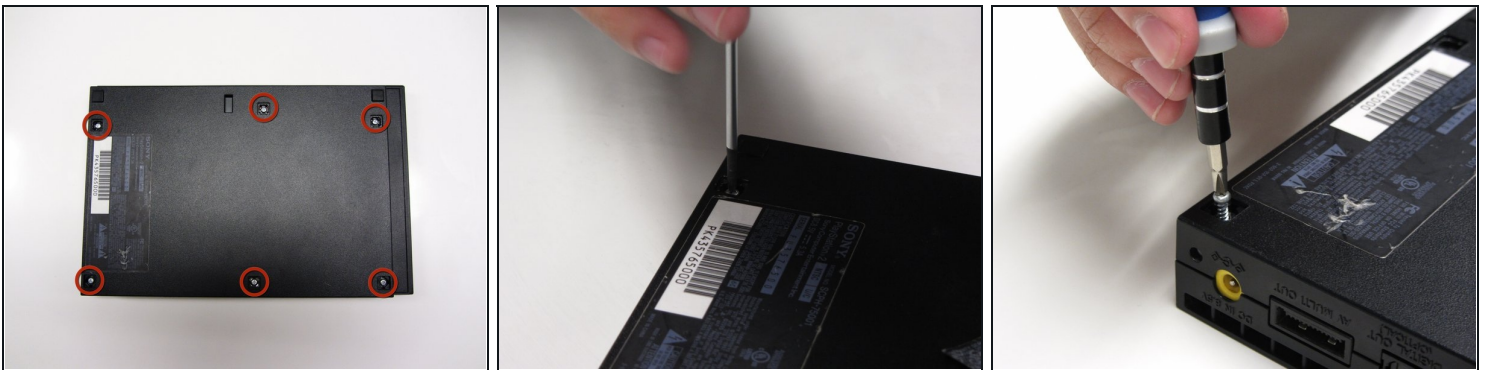
- Remove the five visible feet from the bottom of the device using a spudger.

Step 4



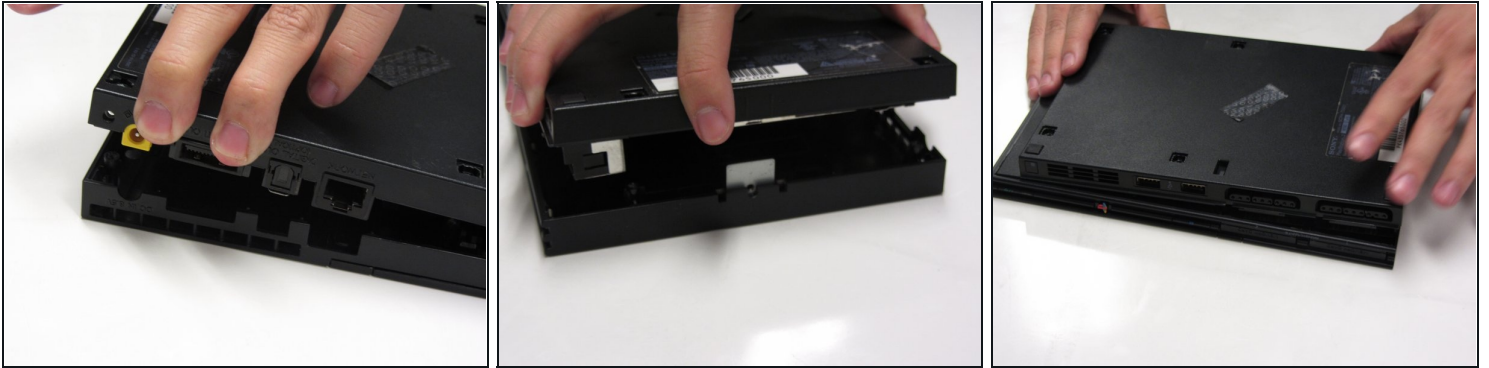
- Remove the sticker and then remove the 6th foot.

Step 5



- After all of the feet have been removed, Use a Phillips #1 screwdriver to remove the six 4.0mm screws from the base of the PS2.

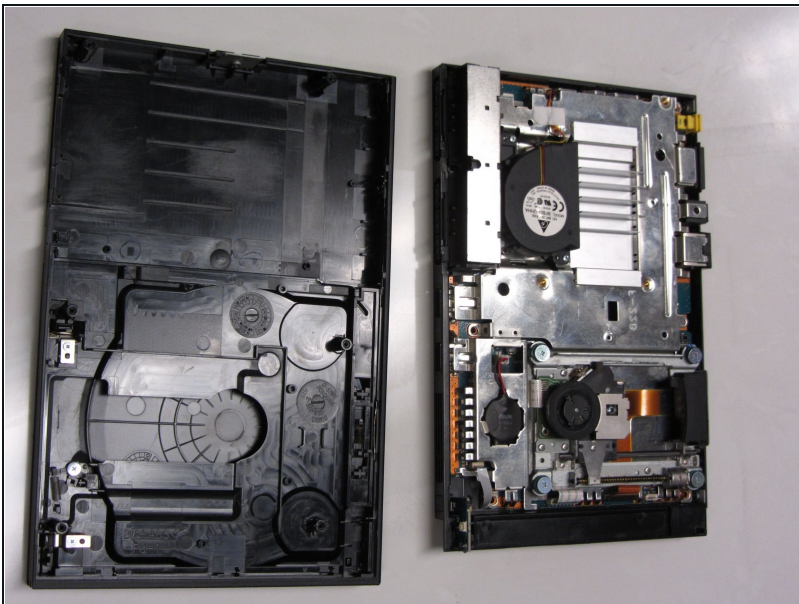
Step 6



- Once all of the screws have been removed, pry apart the plastic covers. Start by lifting the side containing the power cable and Ethernet port. Then, lift the opposite side to fully separate the two sides.

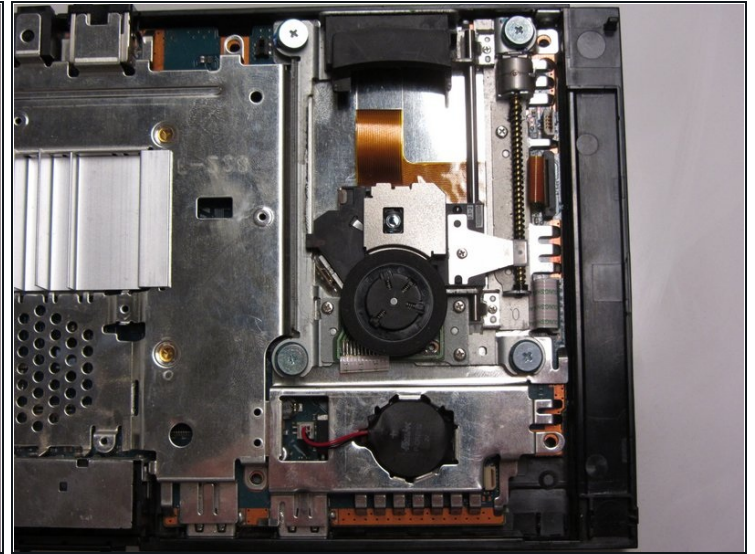
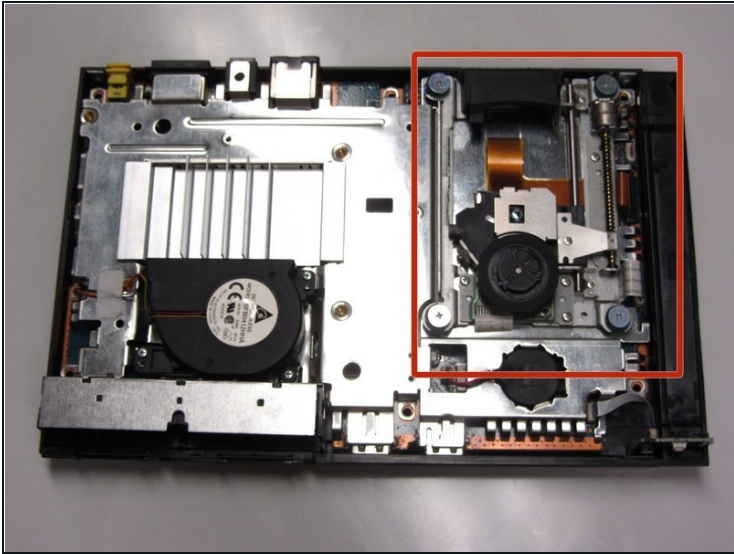
⚠ You may need to apply some gentle force to detach the covers. Be careful not to break the plastic screw pins.

Step 7



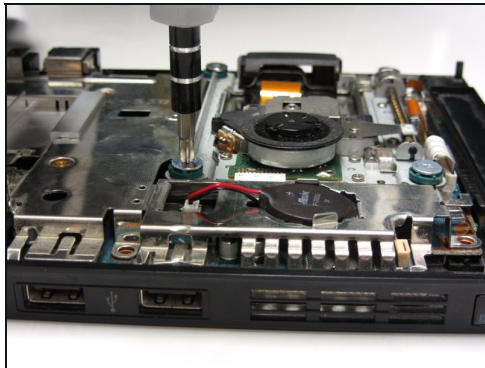
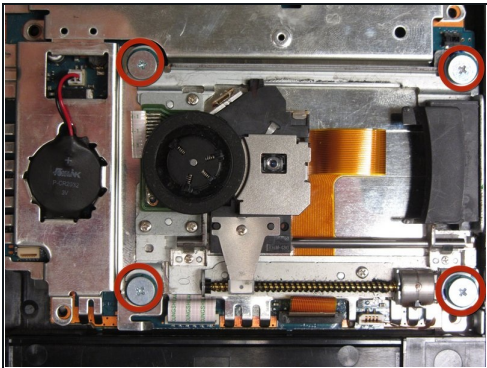
- If done correctly, you should have a fully detached plastic backing, revealing the electronic components of the PlayStation 2.

Step 8 — Optical Drive



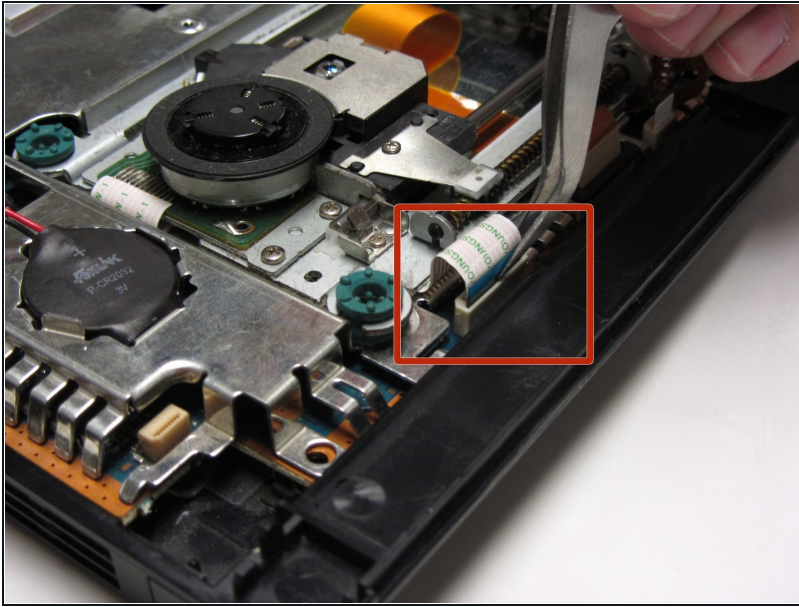
- Locate the optical drive on the motherboard.

Step 9



- Unscrew the four 4.0mm screws that mount the optical drive to the motherboard.

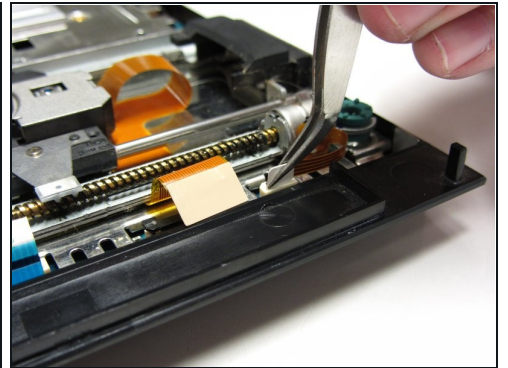
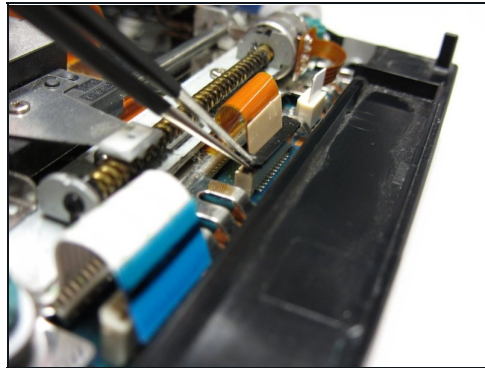
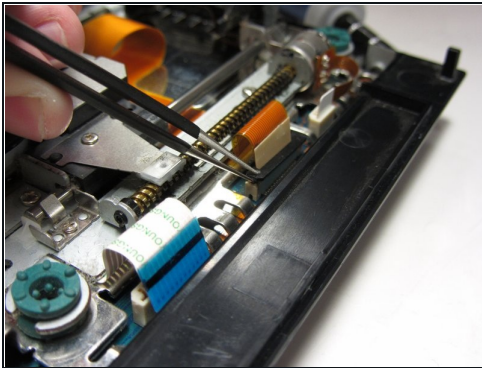
Step 10



- Locate the three ribbons that are attached to the motherboard.

ⓘ Note: These ribbons are different sizes: one large, one medium and one small sized ribbon.

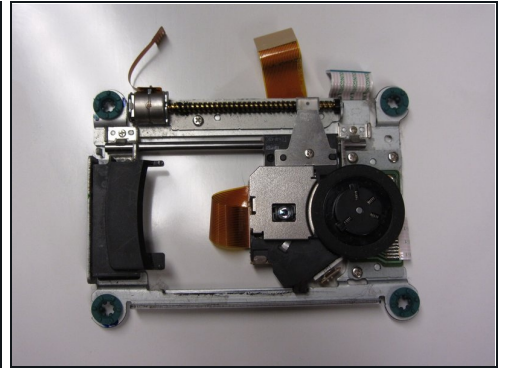
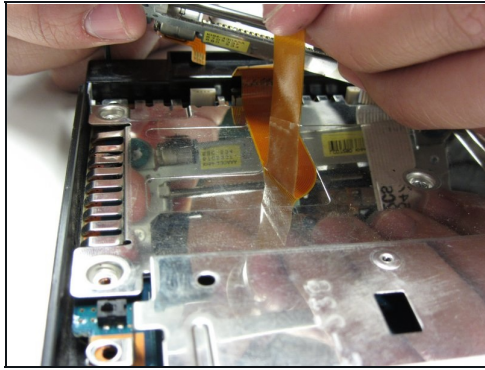
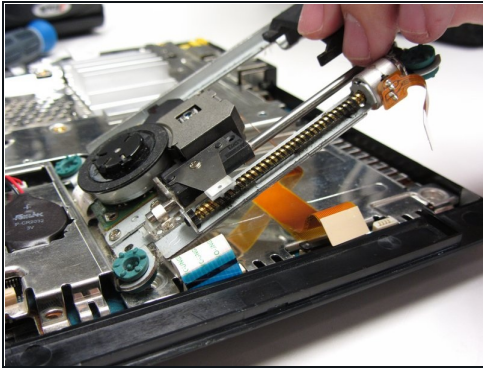
Step 11



- Using [tweezers](#), gently detach all three ribbons from the motherboard terminal. Unlock the middle orange ribbon to lift the black tab up on either side.

⚠ **IMPORTANT:** The orange ribbon is glued to the metal chassis. Gently pull the ribbon upward to make sure that you don't rip it.

Step 12



- Gently lift the optical drive away from the motherboard.

To reassemble your device, follow these instructions in reverse order.