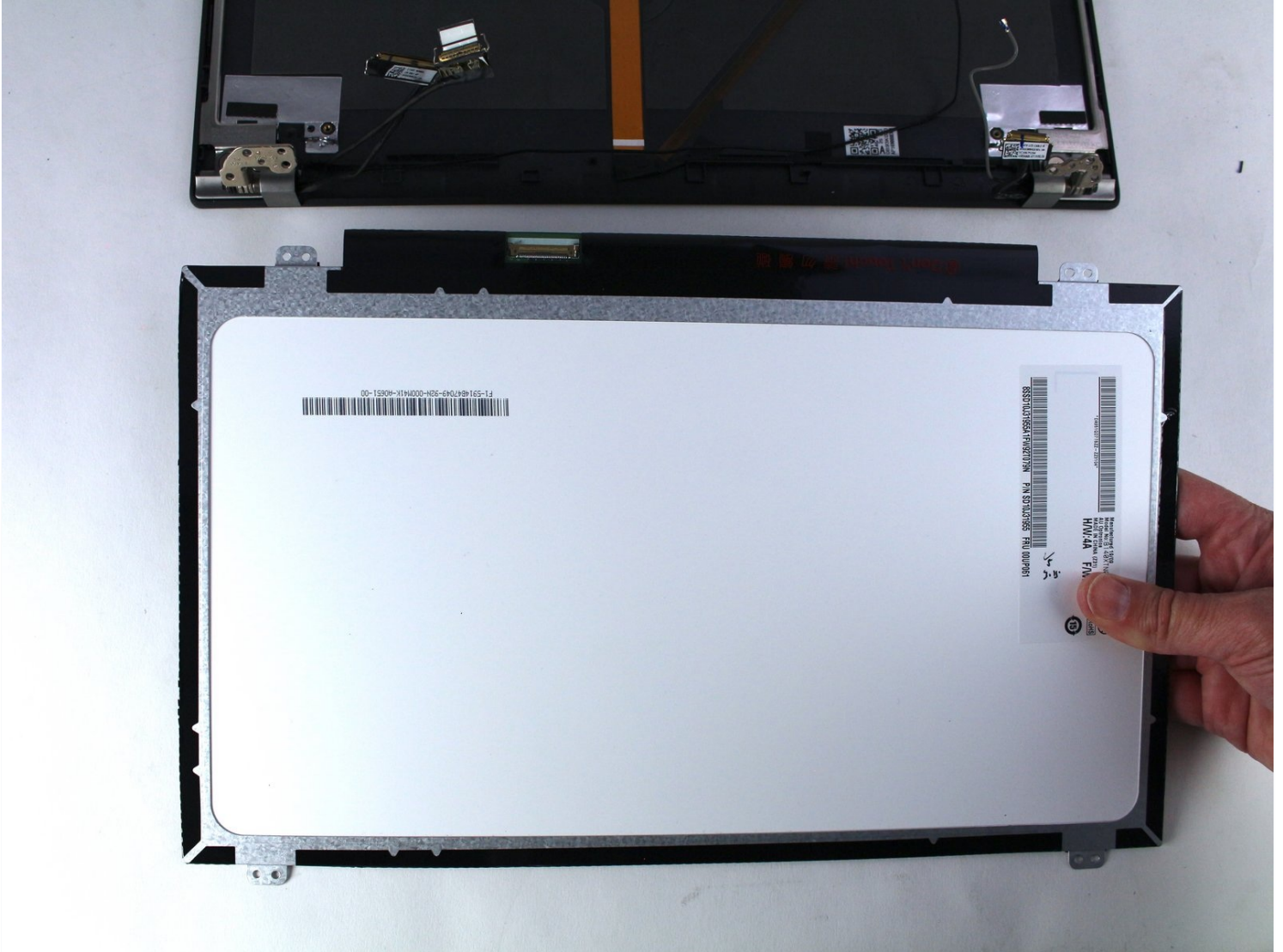




Lenovo ThinkPad T480 LCD Screen Replacement

If you need to replace the LCD screen of your...

Written By: Sarah Westberg



INTRODUCTION

If you need to replace the LCD screen of your Lenovo ThinkPad T480, follow this guide. The LCD screen or liquid crystal display is a type of flat-panel display. It uses liquid crystal film between glass plates that when voltage is applied its optical properties change and images are displayed or hidden.

If damage or failure occurs you may notice missing pixels, the color could be off, or the screen could crack if it is dropped or sustains a fall.

Prior to starting this repair, be sure to [disable the internal battery](#), turn off the device, and unplug it from the charging cable.

TOOLS:

[iFixit Opening Tool](#) (1)
[Phillips #1 Screwdriver](#) (1)
[Spudger](#) (1)
[Metal Spudger](#) (1)

PARTS:

[NV140FHM-N41 LCD Panel](#) (1)

Step 1 — External Battery



 [Disable the battery](#), power down, and unplug your device before you begin.

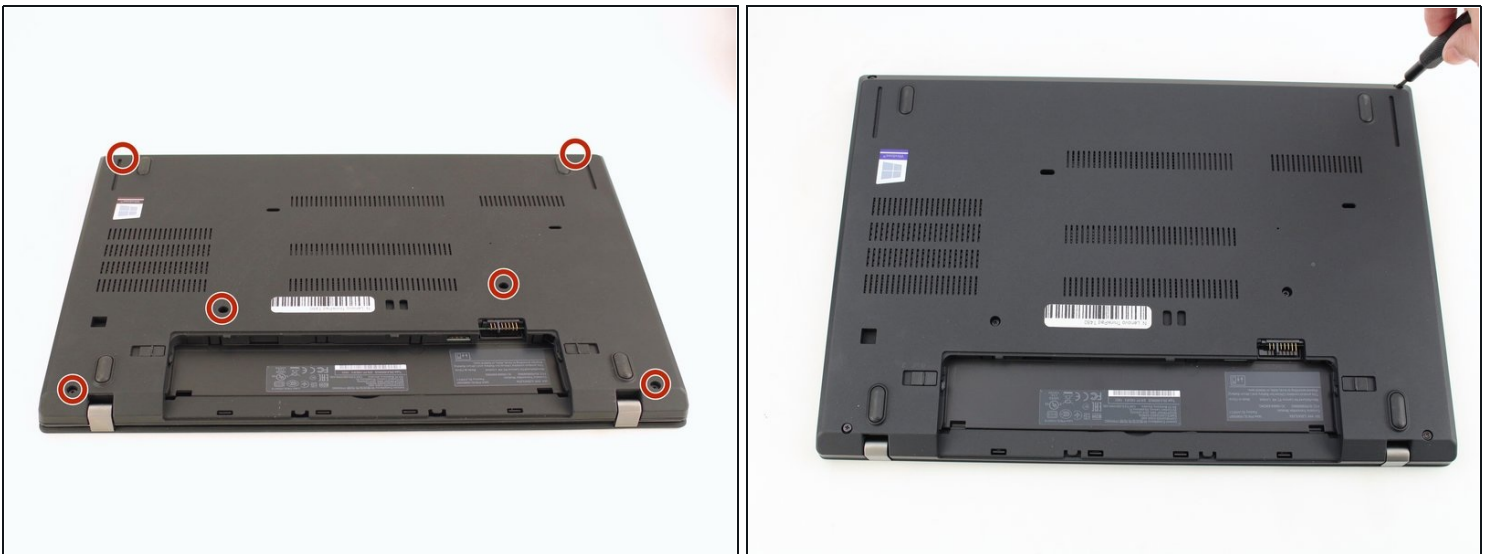
- Flip the laptop over so the bottom of the device is showing.

Step 2



- Using your fingers, slide the lock on each side of the battery to the unlocked position.
- Remove the battery from the slot.

Step 3 — Back Cover



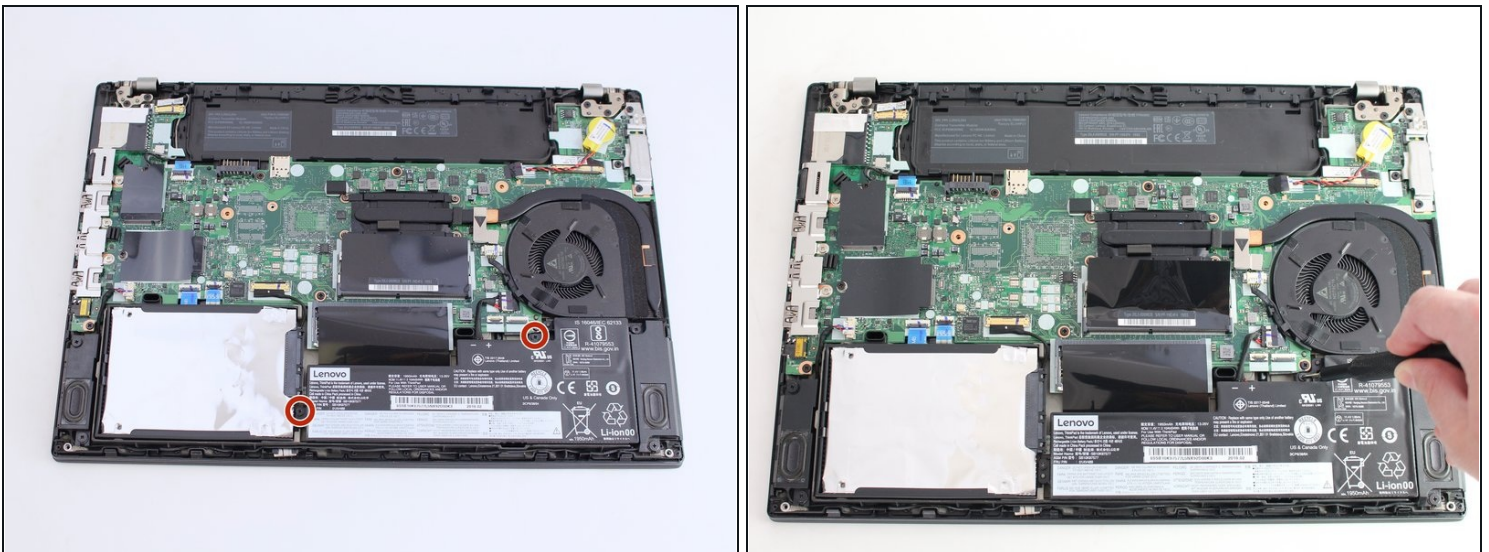
- Using the Phillips #1 screwdriver, loosen the six captive screws.

Step 4



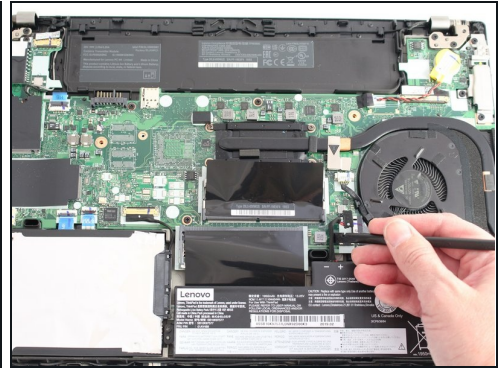
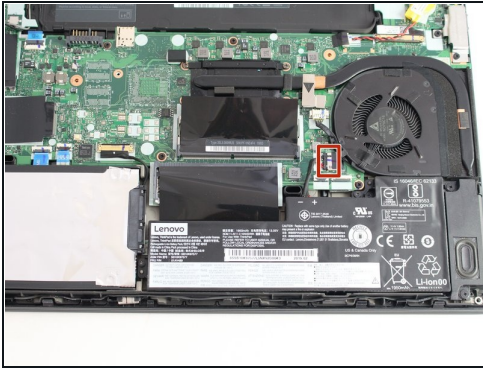
- Insert the blue plastic opening tool into the space between the lower case and the chassis.
- Slide the opening tool around the perimeter of the case to release the clips holding the case and the chassis together.
- ❗ If it feels like the battery well portion of the back cover isn't loose, these clips may be holding the cover to the laptop. Use your opening tool to pry the clips loose and try removing the cover again.
- Remove the back case.

Step 5 — Internal Battery



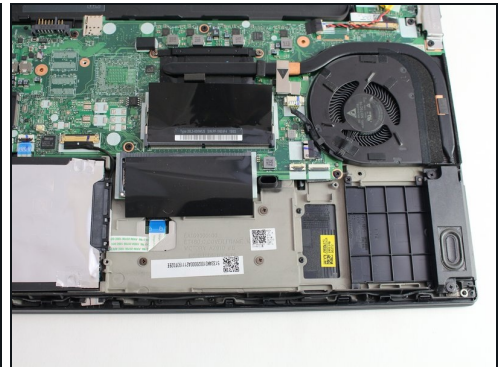
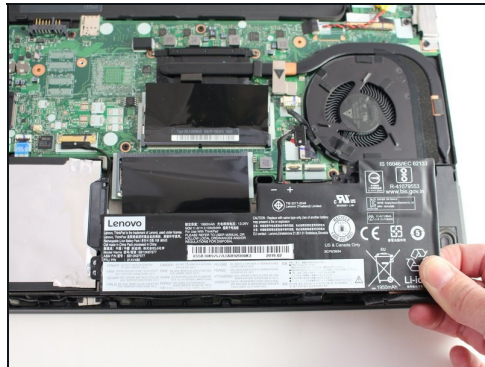
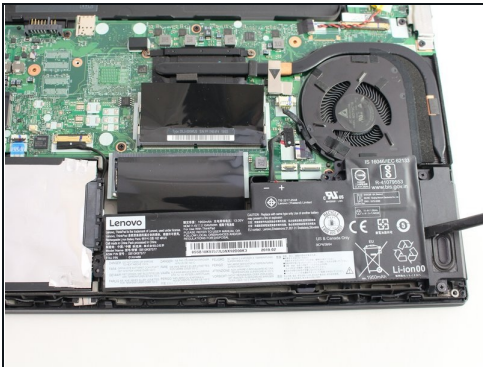
- Using the Phillips #1 screwdriver, remove the two 4.6 mm screws securing the internal battery to the frame.

Step 6



- Use the spudger to slide the battery socket connector parallel to the motherboard and out of its socket on the motherboard.

Step 7



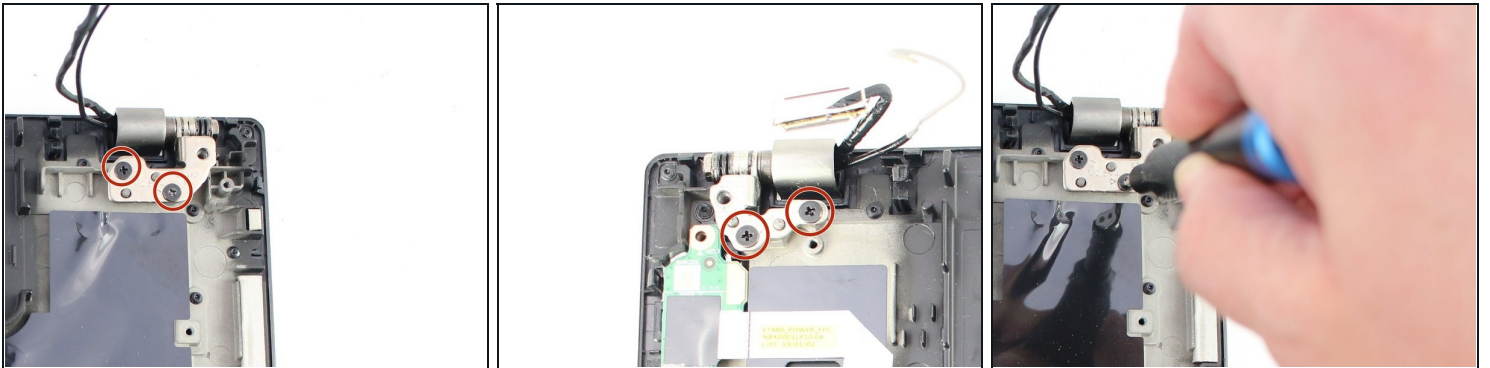
- Using the black nylon spudger, wedge the battery up from the case and lift it out.

Step 8 — LCD Assembly



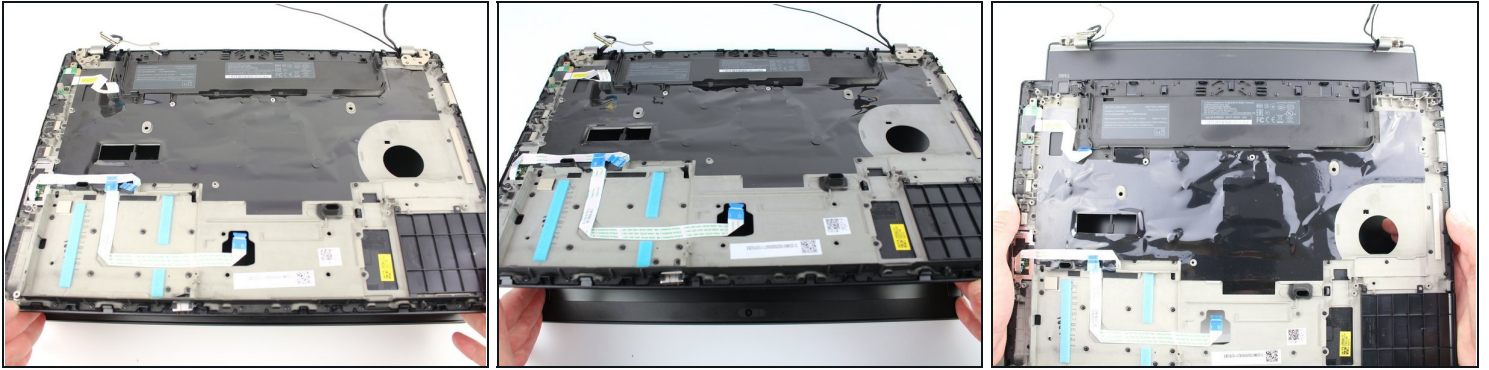
- Remove the cables from the cable guides.

Step 9



- Using the Phillips #1 screwdriver, remove two 4.3 mm screws from each hinge (four total).

Step 10



- Lift the keyboard bezel up and slide it out from the hinges to separate it from the LCD assembly.
- ⓘ In this image, all of the internal components were removed prior to this step so your device will look somewhat different.

Step 11 — LCD Bezel



- Use the metal spudger to create a space between the bezel and lid and carefully undo the clips around the perimeter of the bezel.

Step 12



- Finish removing the bezel from the screen using the metal spudger and your hands.
- ⓘ The bottom edge of the bezel is not connected with clips but with adhesive. Take care as you remove it so you don't bend or break the bezel.

Step 13 — LCD Screen



- Remove the four 3.0 mm Phillips #1 screws from the four corners of the LCD screen.
 - Lift it up using the spudger and flip it over gently towards you.
- ⚠ The LCD screen is still connected by a connector cable so be sure not to yank or pull on the screen.

Step 14



- Using the black nylon spudger, disconnect the display connector cable and remove the LCD screen.

To reassemble your device, follow the above steps in reverse order.

Take your e-waste to an [R2 or e-Stewards certified recycler](#).

Repair didn't go as planned? Try some [basic troubleshooting](#), or ask our Answers community for help.