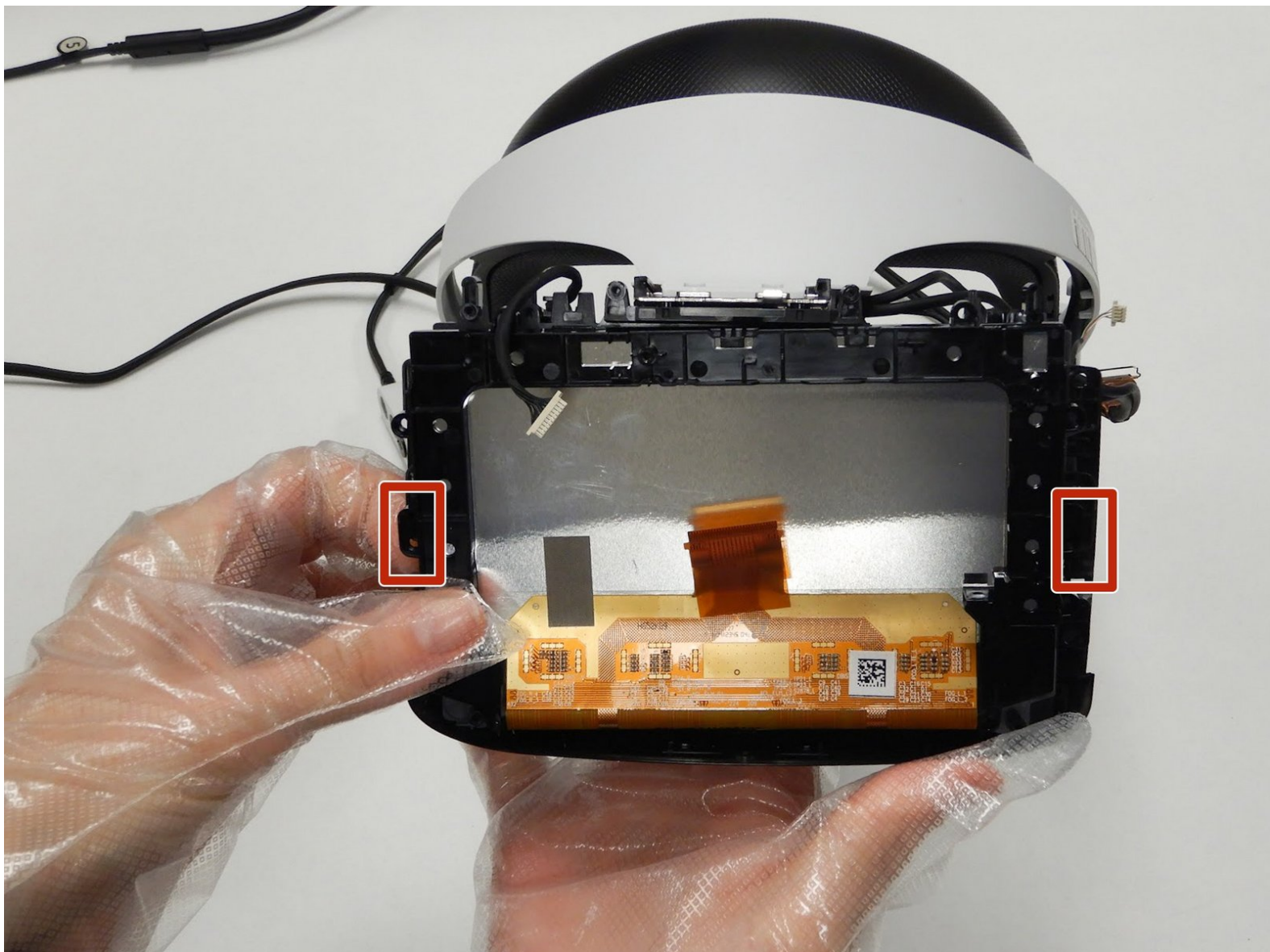




PlayStation VR Display Replacement

This guide shows you how to disassemble and replace the display on your Playstation VR headset.

Written By: Elliott Ruoff



INTRODUCTION

This guide shows you how to disassemble and replace the display on your Playstation VR headset.



TOOLS:

- [iFixit Opening Tool](#) (1)
 - [Phillips #000 Screwdriver](#) (1)
-

Step 1 — LED Light Tracker



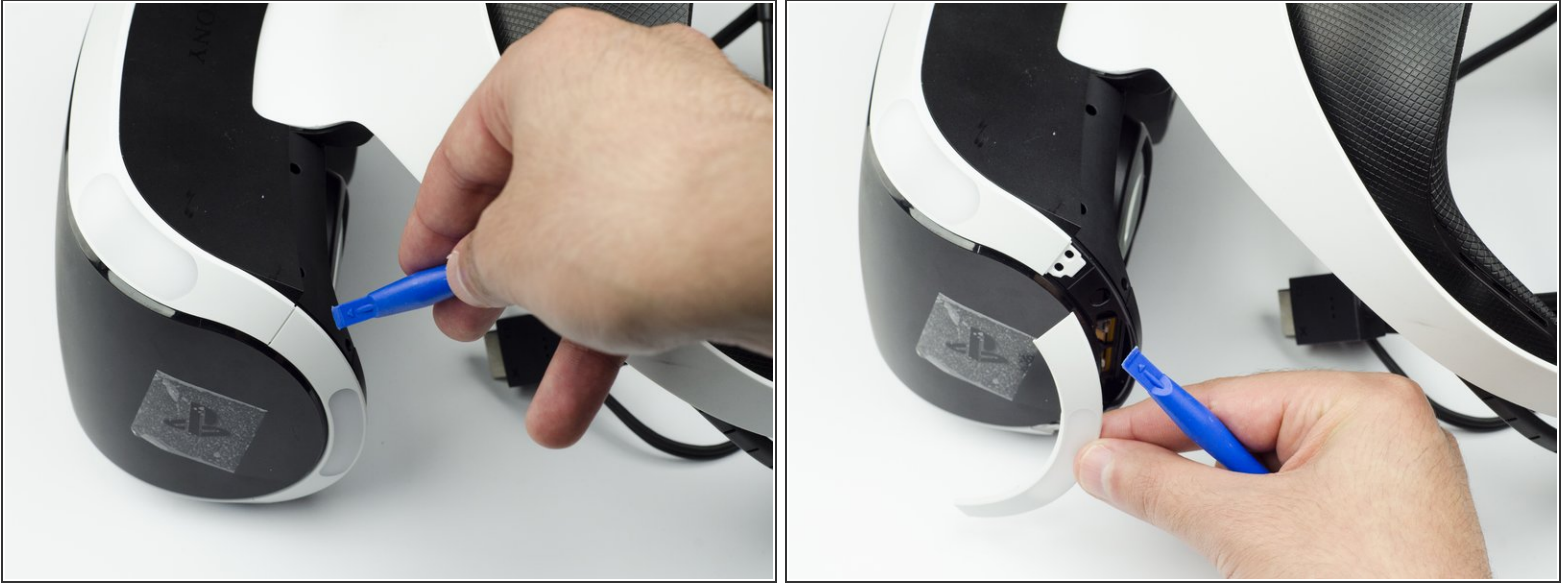
- Peel back the rubber covering around the lenses to remove the surrounding plastic eyepieces.

Step 2



- Unscrew four 13 mm screws with a PH #000 screwdriver.

Step 3



- Using the plastic opening tool, carefully pry the white plastic panel free from the side of the headset. Repeat this action for the opposite side.

Step 4



- Use the plastic opening tool to pry the top white plastic panel free from the headset.
- ⓘ Do not try to remove the bottom plastic panel. There is a screw attaching it that must be removed first.
- ⓘ There may be a small amount of adhesive attaching the top panel to the headset, in which case you may need to use a bit more force to remove the panel.

Step 5



- Flip the headset over.
- Using a PH #000, unscrew the 7 mm screw found on the bottom of the headset.

Step 6



- Using the plastic opening tool, pry the bottom white plastic panel loose and remove it from the headset.
- i** There is adhesive attaching the panel to the headset, in which case it will take more force to remove the panel.

Step 7



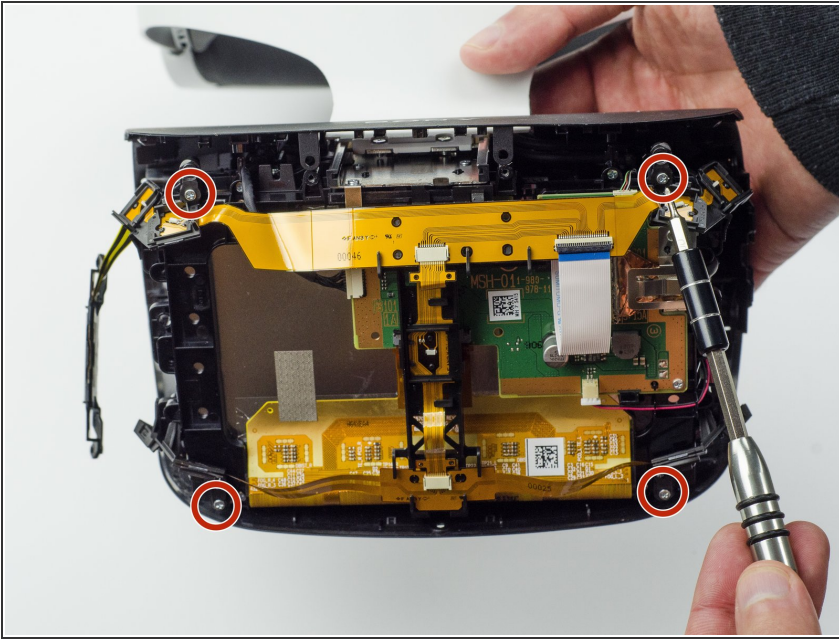
- Unscrew the two 7 mm screws from the top of the headset.

Step 8



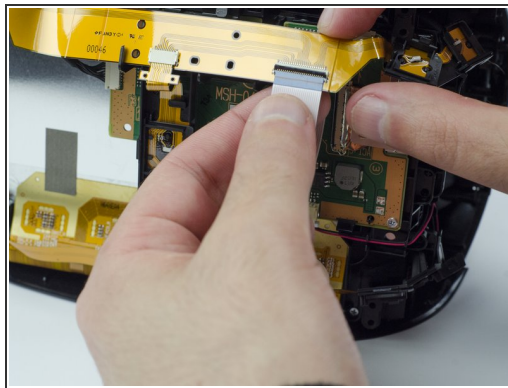
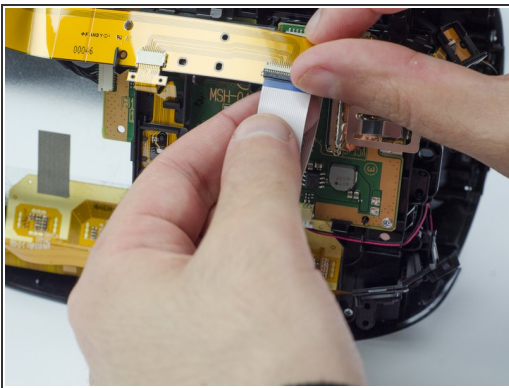
- Using your fingers, carefully pry the black front panel free from the headset.
- ⓘ We recommend that you start the removal from the sides by pulling them forward.
- ⓘ There is adhesive holding the front panel in place, which means you will need a bit of extra force to remove it.

Step 9



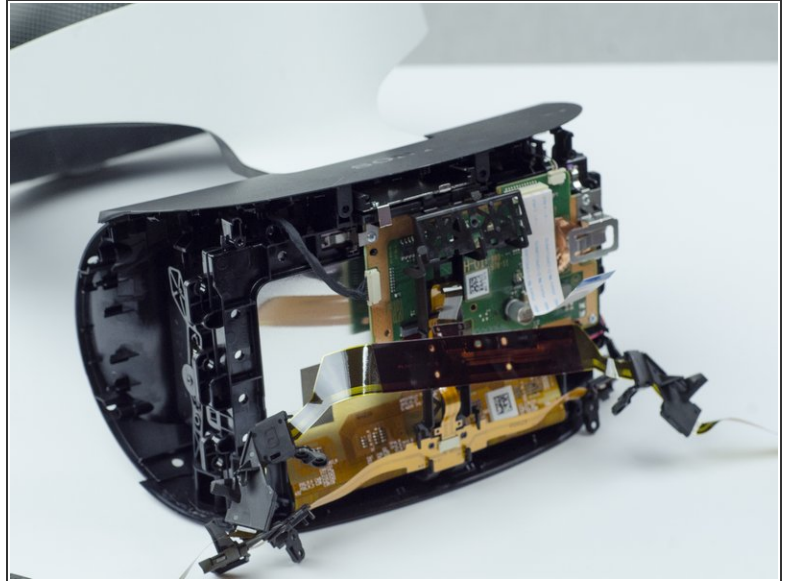
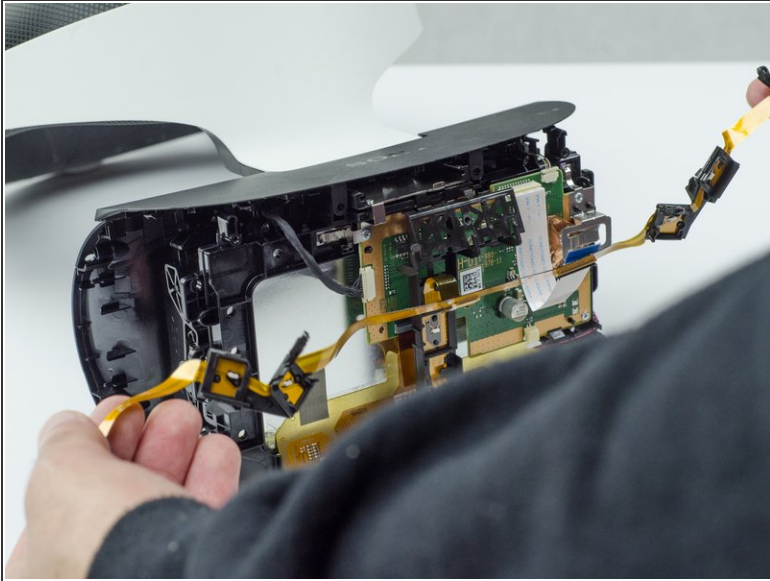
- Unscrew the four silver 6 mm screws in each corner using a PH #000 screwdriver.

Step 10



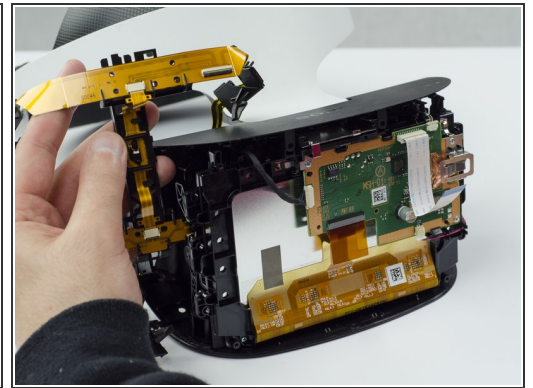
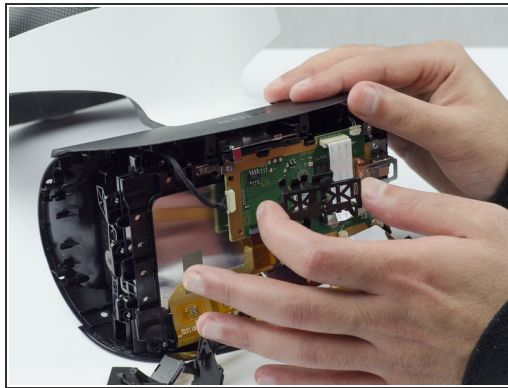
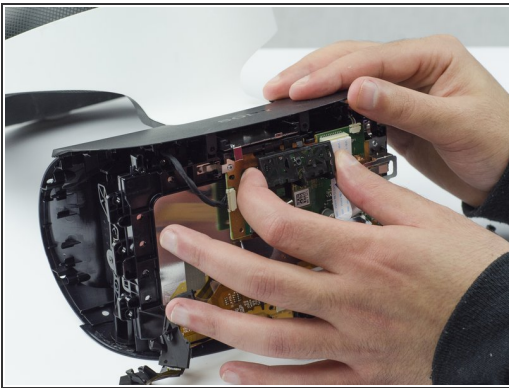
- Lift the small silver latch attaching the ZIF (zero insertion force) connector to the circuit board.
- Carefully pull the end of the white ribbon connector from its slot.
- ⓘ Be careful not to damage or dirty the ribbon connector.

Step 11



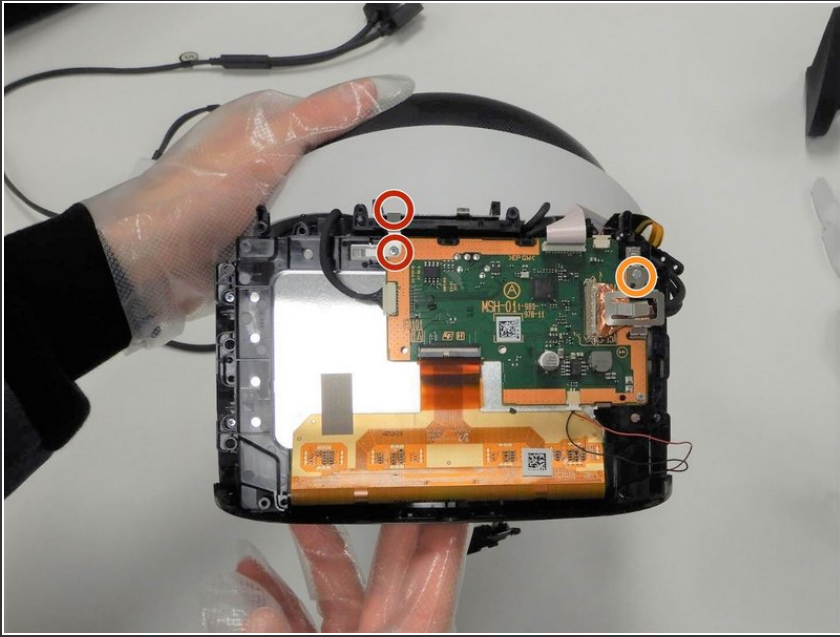
- Unhitch the yellow led connector ribbon and move it aside.
- ⓘ Be careful not to damage or dirty the ribbon connector.

Step 12



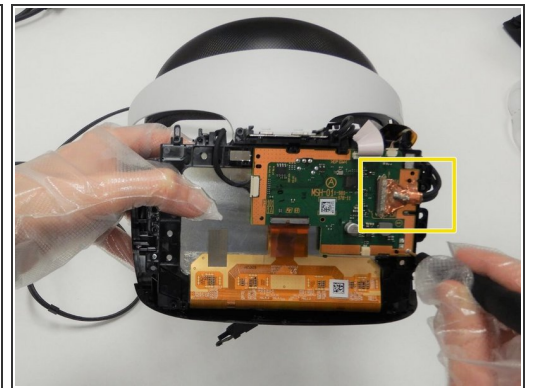
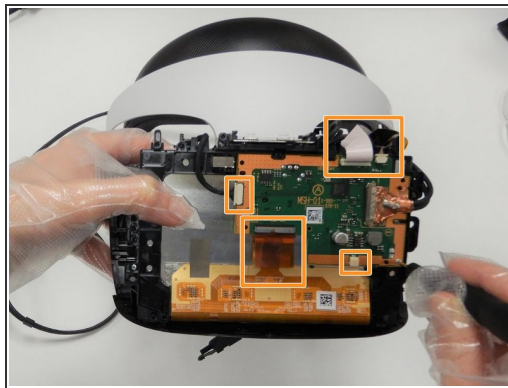
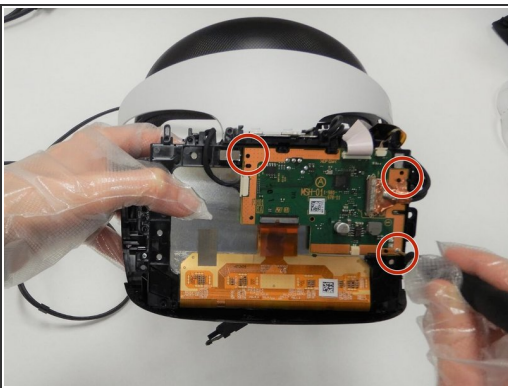
- Carefully pry the black plastic piece attaching the yellow ribbon to the headset away from the green circuit board.
- Remove the yellow LED ribbons and black plastic connecting piece from the headset.

Step 13 — Motherboard



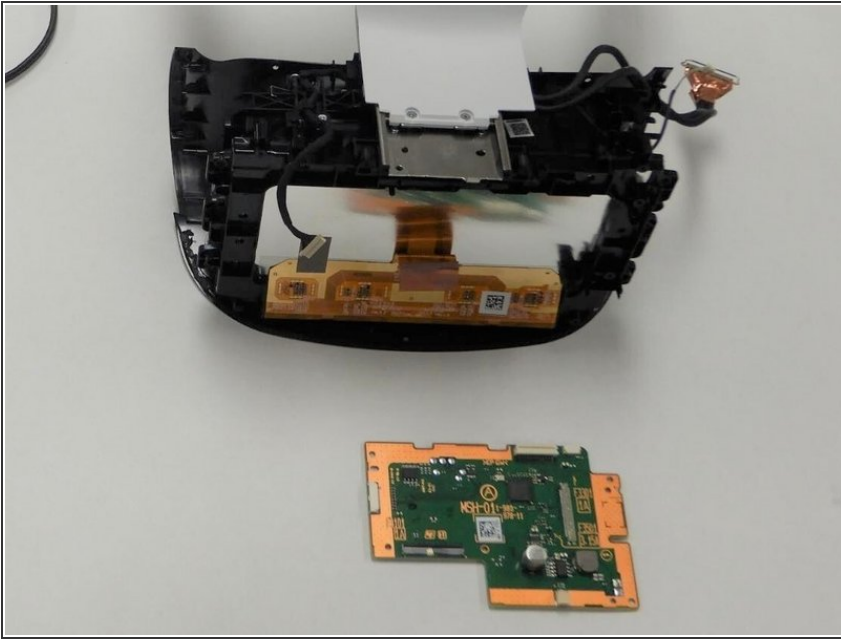
- Remove the two 6mm screws on the L shaped silver clip to the upper left of the motherboard using the Phillips #000 screwdriver.
- Remove the one 6mm screw that is securing the silver clip on the far right side using the Phillips #000 screwdriver.

Step 14



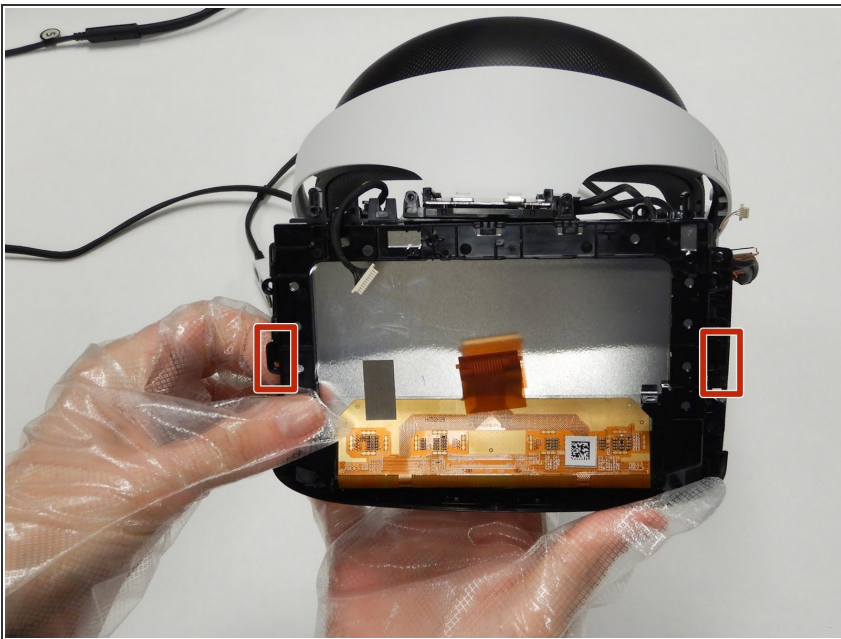
- Remove the three 6mm screws from the motherboard using the Phillips #000 screwdriver.
- Unplug the white cable and ribbons from the motherboard(make sure to lift the gates on the ribbons before pulling out).
- Unplug the HDMI cable by lifting the gate and pulling gently(there will be adhesive).

Step 15



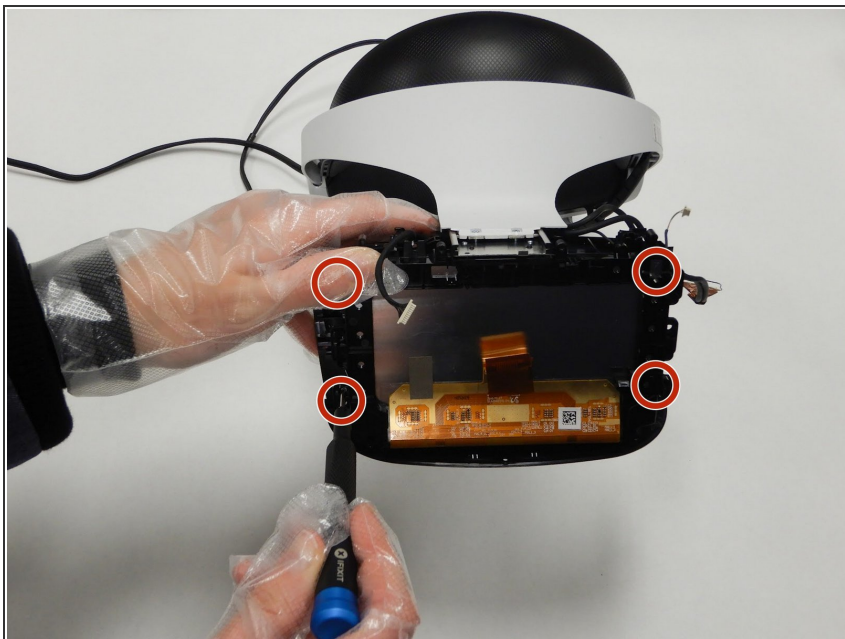
- Carefully remove the motherboard and place it on a hard dry surface.

Step 16 — Display



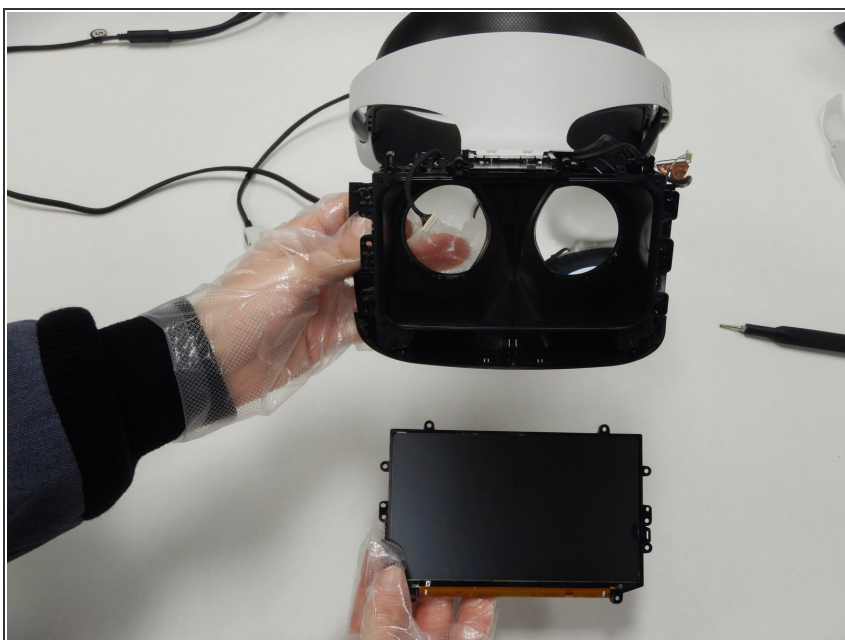
- Press down firmly on the two clips on the sides of the device to remove the display.
- ⓘ If dust enters the display, it can impair function of the device.

Step 17



- Remove the four 6mm screws holding the display in place using the Phillips #000 screwdriver.

Step 18



- Carefully remove the display from the headset.

To reassemble your device, follow these instructions in reverse order.