



Toshiba Satellite L45-S7423 Dial Up Modem Replacement

This guide will show the user how to install the dial up modem for the Toshiba Satellite L45-S7423.

Written By: Stephen Sippel



INTRODUCTION

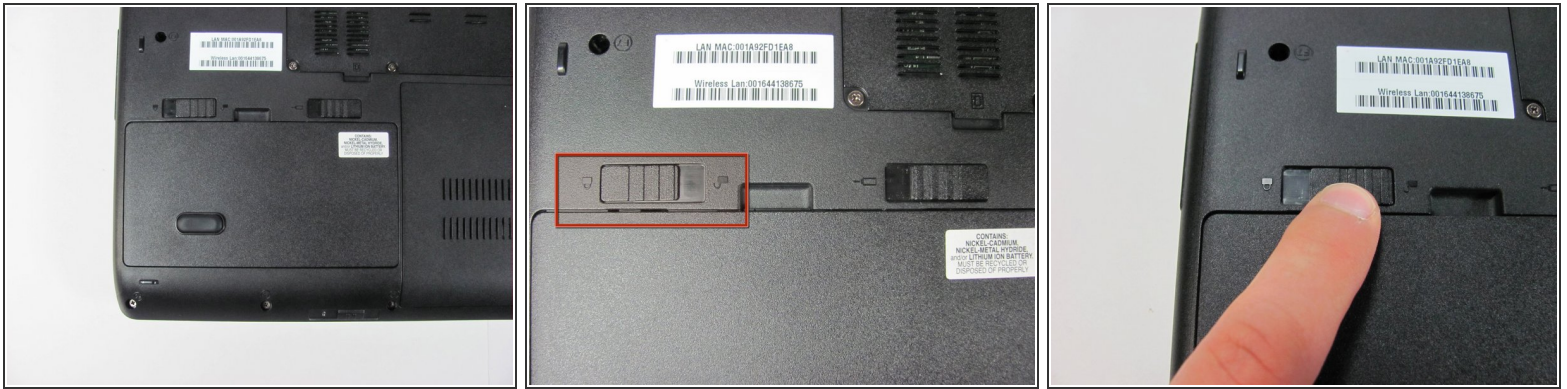
The dial up modem allows the user to connect to the internet through a wired connection if a wireless source is not available. This guide shows to the user how to replace the dial up modem if it is not functioning properly.



TOOLS:

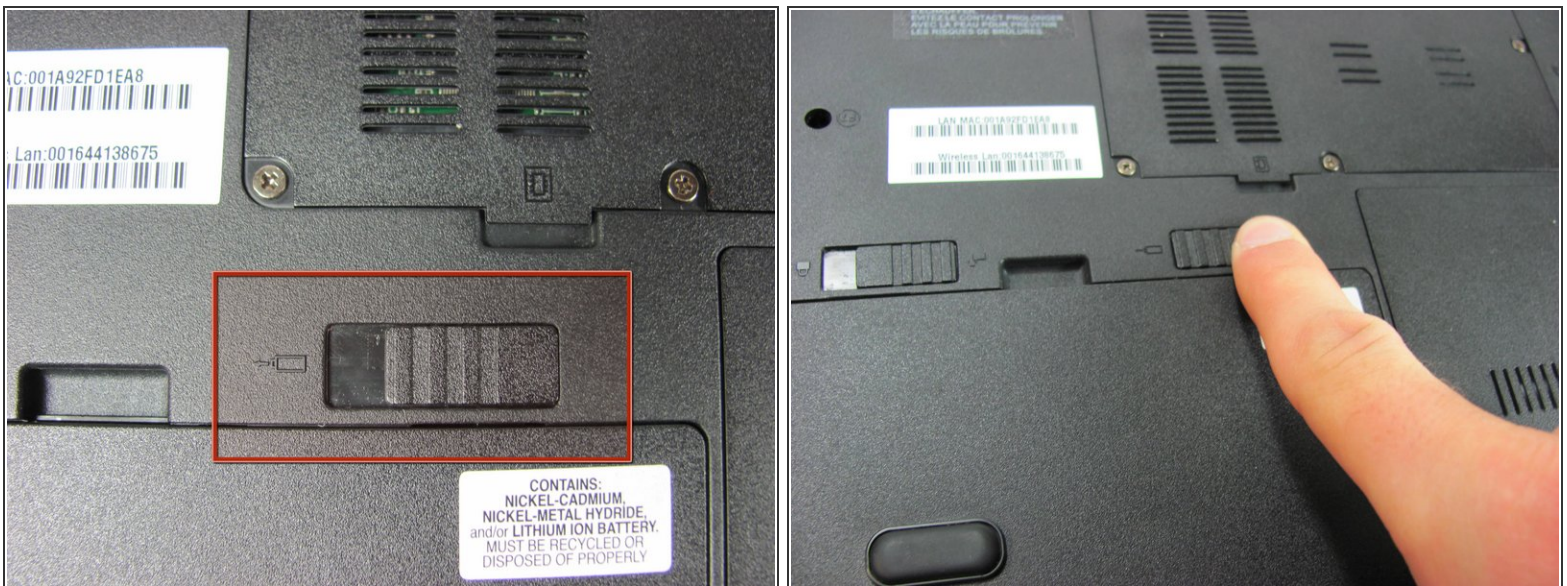
- [Phillips #00 Screwdriver](#) (1)
 - [iFixit Opening Tools](#) (1)
-

Step 1 — Battery



- Make sure the battery lock switch is switched to the unlocked position.
- The battery is unlocked when the battery lock switch is slid to the side with an image of an unlocked lock.

Step 2



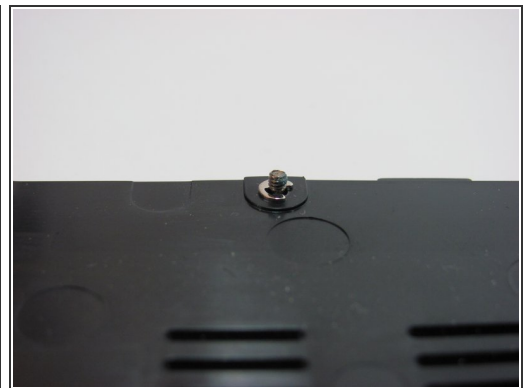
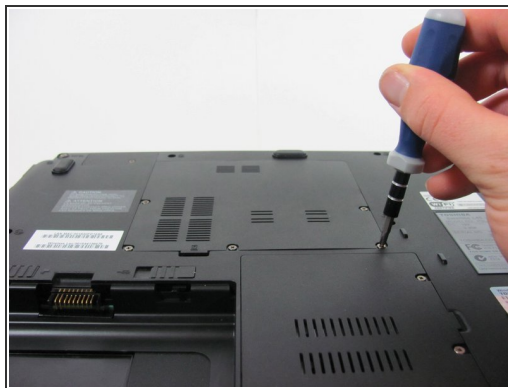
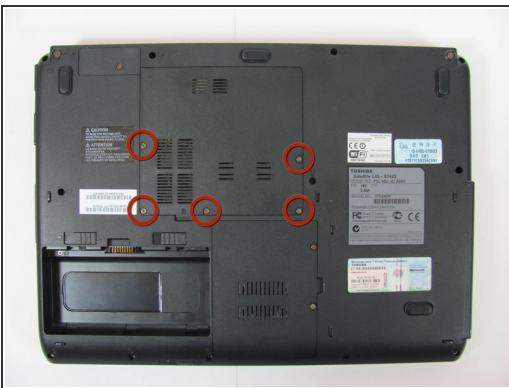
- Slide the battery release switch to the left.
- ⓘ The switch is spring loaded, so you must hold the switch in place while removing the battery.

Step 3



- Using a finger, lift up the battery.
- ☑ The battery release switch must be held in place.

Step 4 — Bottom Access Panel



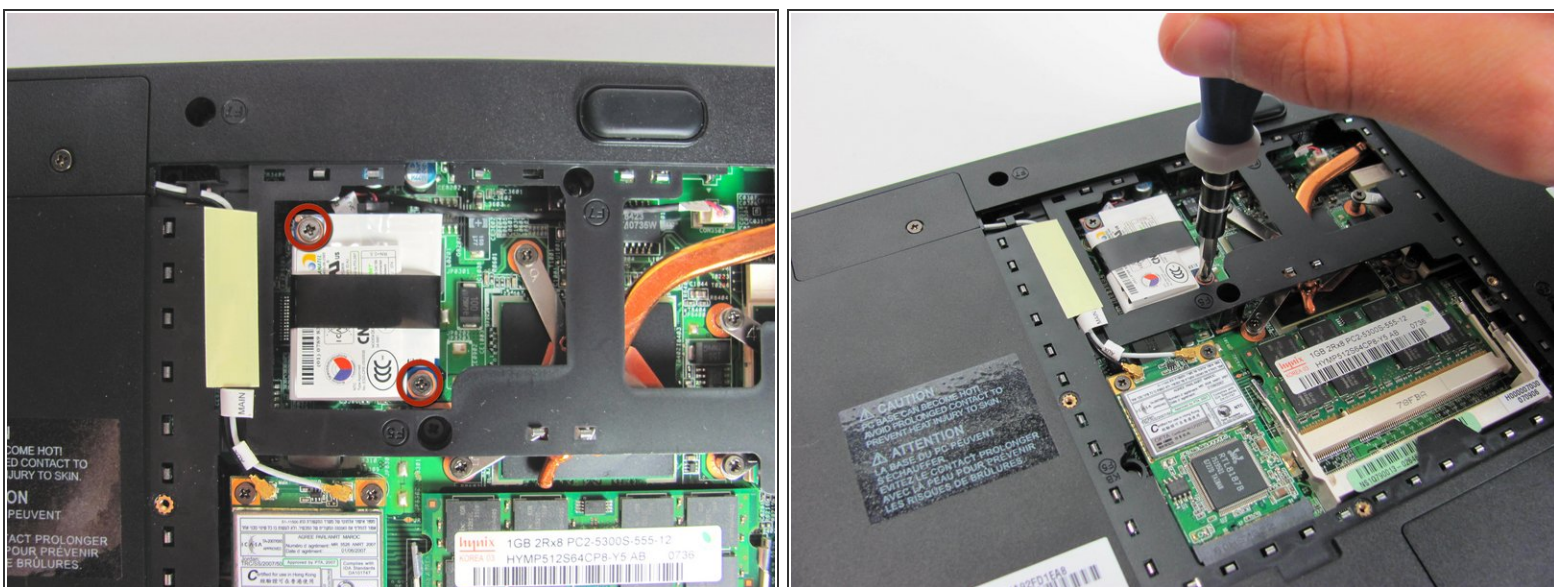
- Remove the 5 Phillips screws holding the panel in place.
- ⓘ These screws are permanently fastened to the panel; they are designed to be removed only partially to avoid loss.

Step 5



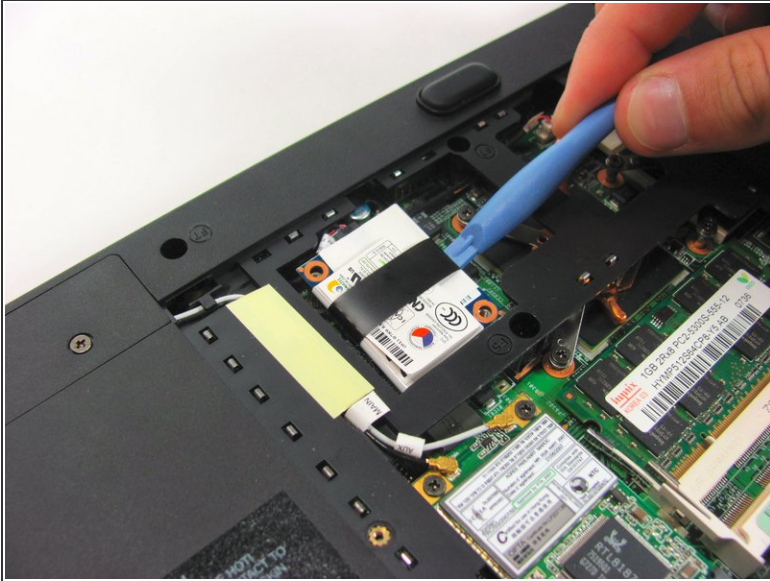
- Use a finger to remove the panel by lifting up on the provided removal tab.

Step 6 — Dial Up Modem



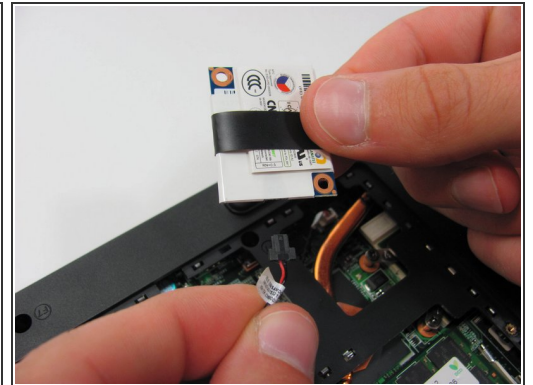
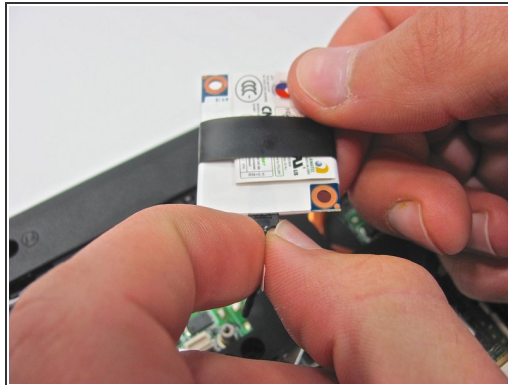
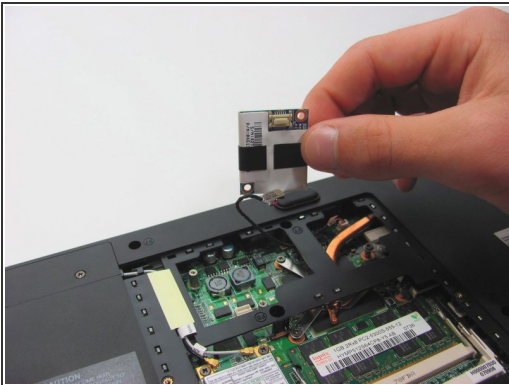
- Remove the two screws holding modem in place.
 - Two 3.6 mm Phillips screws.

Step 7



- Using a plastic removal tool, dislodge the modem. This separates a small connections on the underside of the modem.

Step 8



- Grab the black insert connected to the modem. Gently pull the insert outwards to disconnect the cable.

To reassemble your device, follow these instructions in reverse order.