



Polar Wind 8" High Velocity Fan Blades Replacement

How to replace the blades of a Polar Wind 8" High Velocity fan.

Written By: Aiden Peltier



INTRODUCTION

Polar Wind 8" High Velocity portable fans are cheap, yet efficient, and easy to carry around. While these fans can last many years with proper care, the blades are made of plastic, and can easily get damaged or worn. This guide will show you how to replace the blades in six steps, and all you need is the knowledge of how to properly use a screwdriver and a pair of pliers.

Because we are dealing with small parts that can be rather tricky to disassemble, the difficulty of this guide is set to moderate.

Tips:

- Lube would be helpful to have on hand, but is not required.
- Because the blades are made of plastic, it would be a good idea to recycle the old blades.



TOOLS:

- [Tri-point Y000 Screwdriver](#) (1)
 - [Slip Joint Pliers](#) (1)
-

Step 1 — Fan Blades



- Use a Y000 tri-point screwdriver to remove four screws from the backside of your the fan, turning counterclockwise.

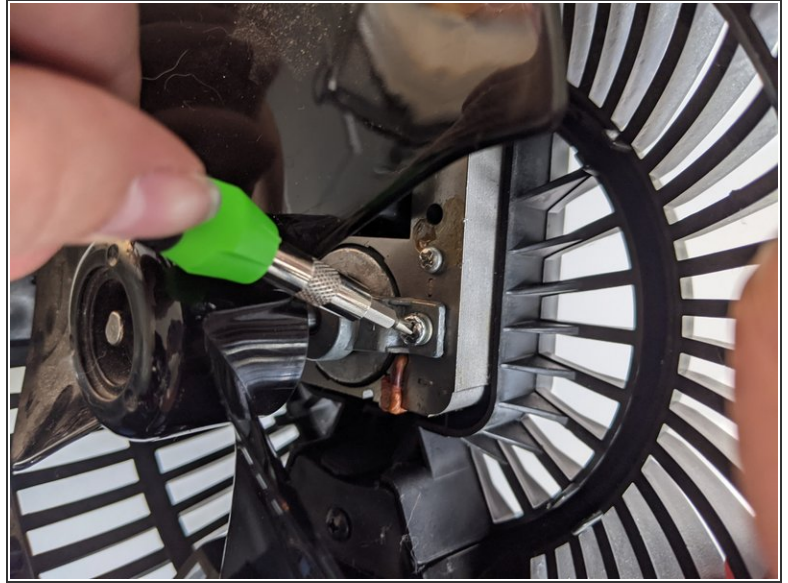
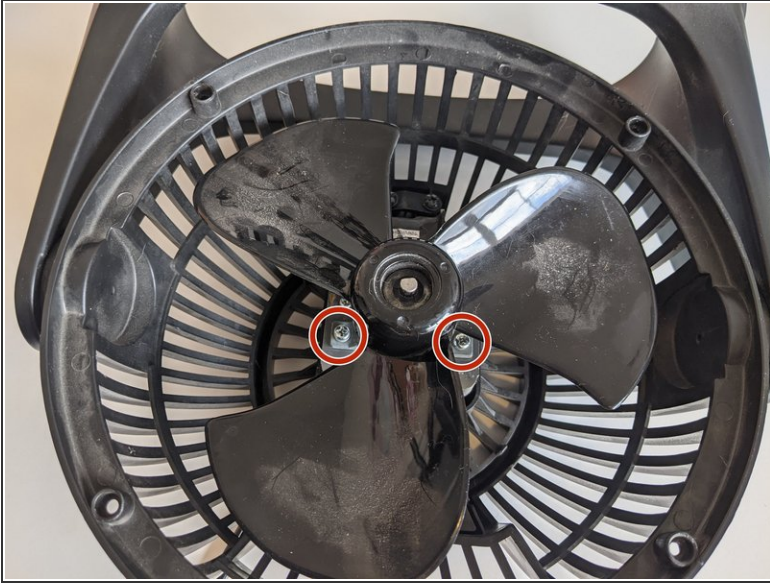
⚠ Caution: Ensure your Polar Wind fan is shut **OFF** and **unplugged** before proceeding to avoid injury.

Step 2



- Separate the cover from the back with your hands and set aside.

Step 3



- Use a Y000 tri-point screwdriver to remove the two screws from under the fan blades, turning counterclockwise.

Step 4



- Carefully remove the fan blades by holding the base and lifting it up out of the motor.
- ⓘ There are two bands loosely attached to the bottom of the rod. Do **not** misplace the bands.

Step 5



- Firmly grasp the base of the blades, pushing it down and turning clockwise to slide down to the base of the rod.
 - Use a pair of pliers to remove the center disk by pinching the rim and pulling upwards.
 - Once it is loosened, squeeze the bottom of the disk and the tip of the rod between your pliers to more easily remove the disk.
- i** The disk may be difficult to remove. Using lube may help slide it off more easily, but it is not required.

Step 6



- Once removed, set the center disk aside.
 - Firmly grasp the base of the fan blades, pulling upwards and turning counterclockwise.
 - Set old blades aside to be recycled later, and replace with the new blades.
- ☒ Once you begin to reassemble your device, push the disk back onto the rod using your hand, then use the pliers to pull it down the rest of the way, until there is at least 1/4" between the disk and tip of the rod.

To reassemble your device, follow these instructions in reverse order.