



# NVIDIA GeForce GTX 970 GPU Replacement

Remove a GeForce GTX 970 from a HAF 912 case and install a replacement GPU.

Written By: Nicholas Eichman



---

## INTRODUCTION

Use this guide to replace a faulty or outdated GPU, in this case, an NVIDIA GeForce GTX 970 in a HAF 912 case.

The graphics card, or GPU, is a piece of hardware that allows a computer to display images and videos more effectively. A failing video card can lead to crashes and issues running certain software.



### TOOLS:

- [Phillips #1 Screwdriver](#) (1)
-

## Step 1 — GPU



- Unplug all the external cables from the computer and ensure that the power supply is switched off.

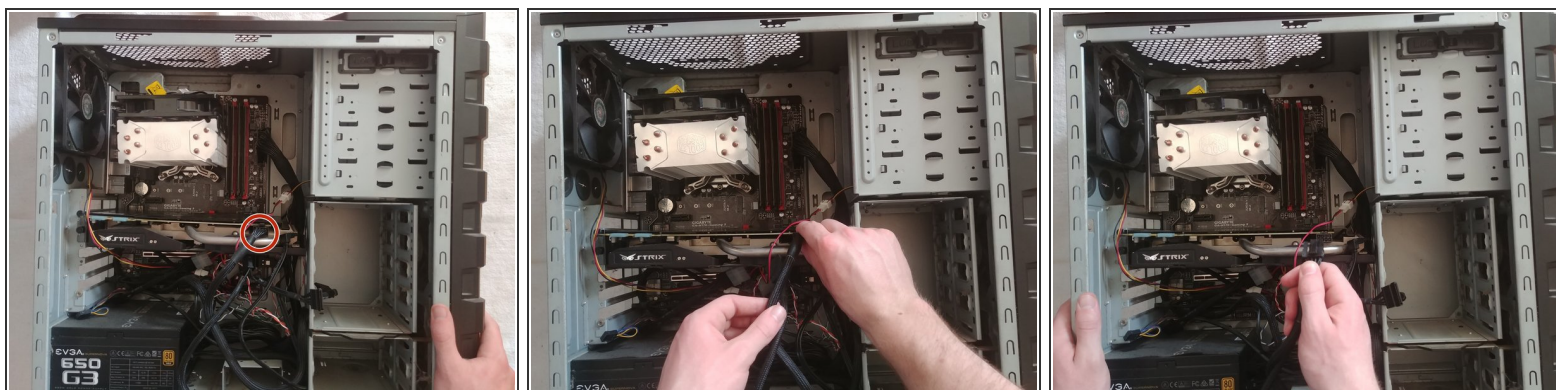
## Step 2



- Remove the case side panel by applying pressure to the side and sliding the side panel toward the back of the case.
- ⓘ Some cases may have screws that must be removed or tabs that must be pressed before the siding will slide off.



## Step 3



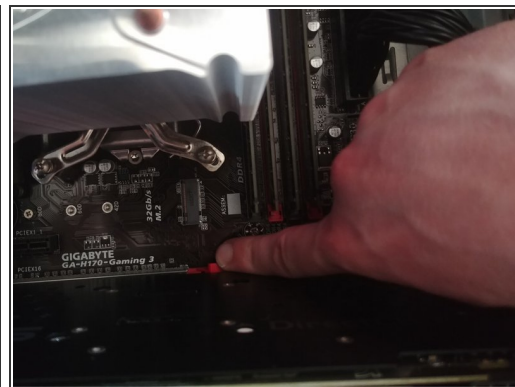
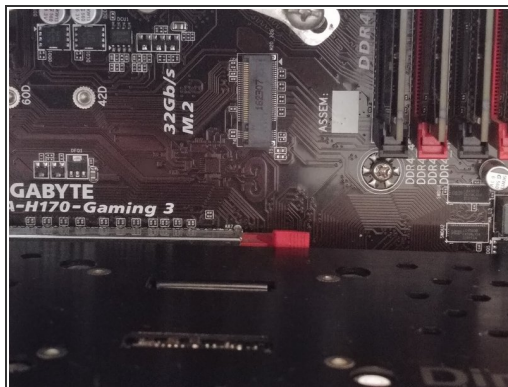
- Pinch the lock at the end of the GPU power cable and carefully disconnect it.

## Step 4



- Remove the two Philips #1 mounting screws that attach the GPU to the inside of the case.

## Step 5



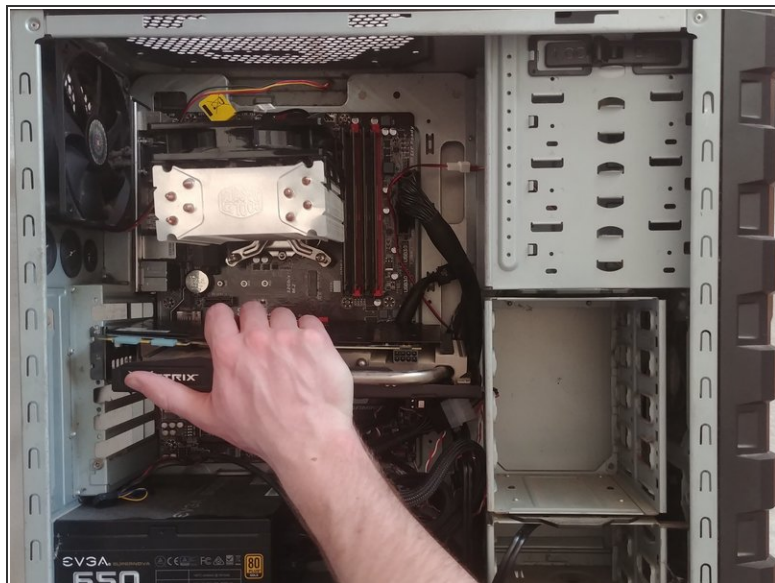
- Press down the locking tab at the base of the GPU.

## Step 6



- Remove the GPU from the case. If it does not move, check to make sure that steps 3-5 were properly performed.

## Step 7



- ☒ When inserting a replacement GPU, ensure that the base is lined up properly with the appropriate slot on the motherboard.
- Once the replacement GPU is lined up, press down until you hear a click or can see that the locking tab is flipped up again.

To finish reassembly, follow steps 2-4 in reverse order.