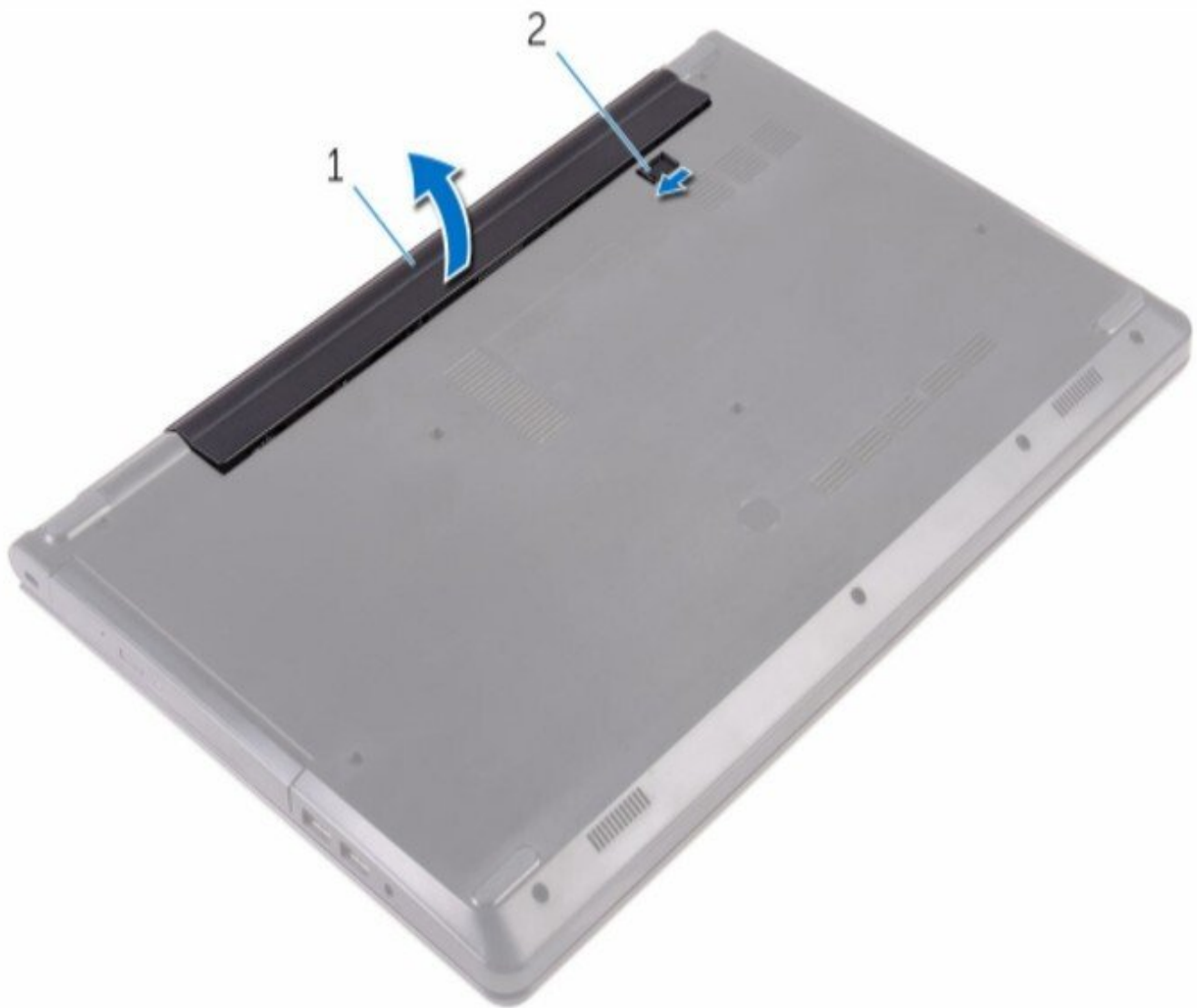




Dell Inspiron 3552 Hard Drive Replacement

Part 1

Written By: Jordon Dozier



INTRODUCTION

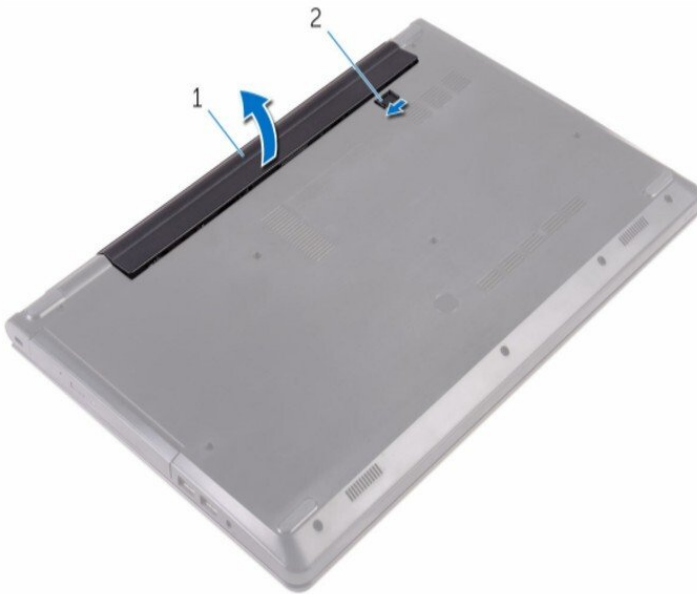
part 2: Dell Inspiron 3552 Hard drive Replacement part 2 - iFixit Repair Guide



PARTS:

- [Phillips #00 Screwdriver](#) (1)
 - [Small plastic scribe](#) (1)
-

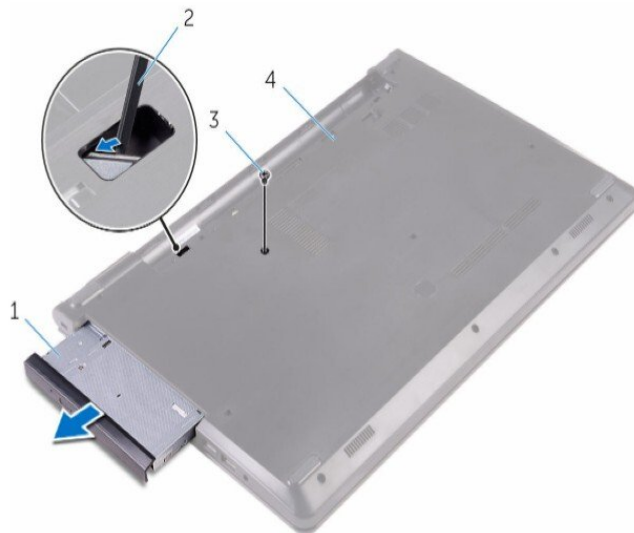
Step 1 — Removing the battery



- Close the display and turn the computer over
- Slide the battery-release latch to the unlocked position
- Lift the battery at an angle and remove the battery from the battery bay

Step 2 — removing optical drive

3 Pull the optical-drive assembly out of the optical-drive bay.



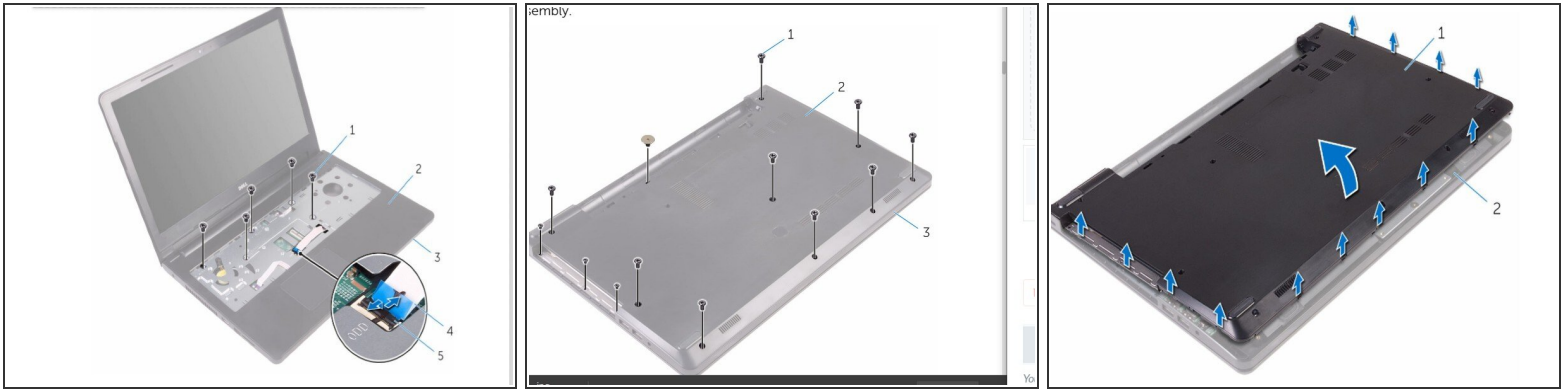
- Remove the screw that secures the optical-drive assembly to the base cover.
- Using a plastic scribe, push the optical-drive assembly out of the optical-drive bay.
- Pull the optical-drive assembly out of the optical-drive bay.

Step 3 — removing keyboard



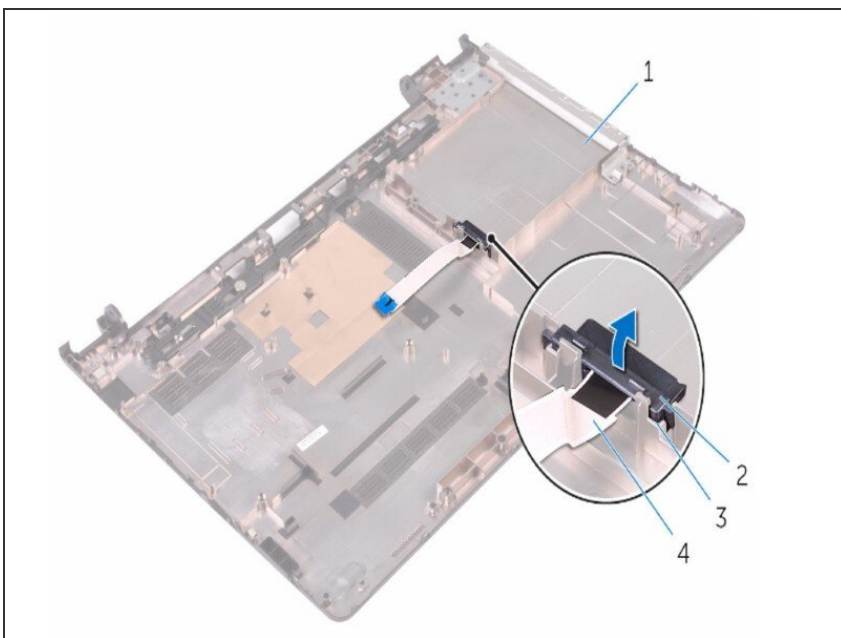
- Turn on the computer over and open the display
- Using a plastic scribe, gently release the tabs that secure the keyboard to the palm-rest assembly
- Slide the keyboard up to release it from the slots on the palm-rest assembly.
- Carefully turn the keyboard over and place it on the palm-rest assembly

Step 4 — Removing the base cover



- Open the display and remove the screws that secure the palm-rest assembly to the base cover from its connector on the system board
- Open the latch and disconnect the optical-drive cable from its connector on the system board
- Close the display and turn the computer over.
- Remove the screws that secure the base cover to the palm-rest assembly
- Using your fingertips, gently pry the base cover off the palm-rest assembly

Step 5 — removing the base part 2



- Release the optical-drive interposer from the tabs on the base cover.

Step 6 — CLICK ON LINK FOR PART 2



- [Dell Inspiron 3552 Hard Drive Replacement part 2](#)

To reassemble your device, follow these instructions in reverse order.