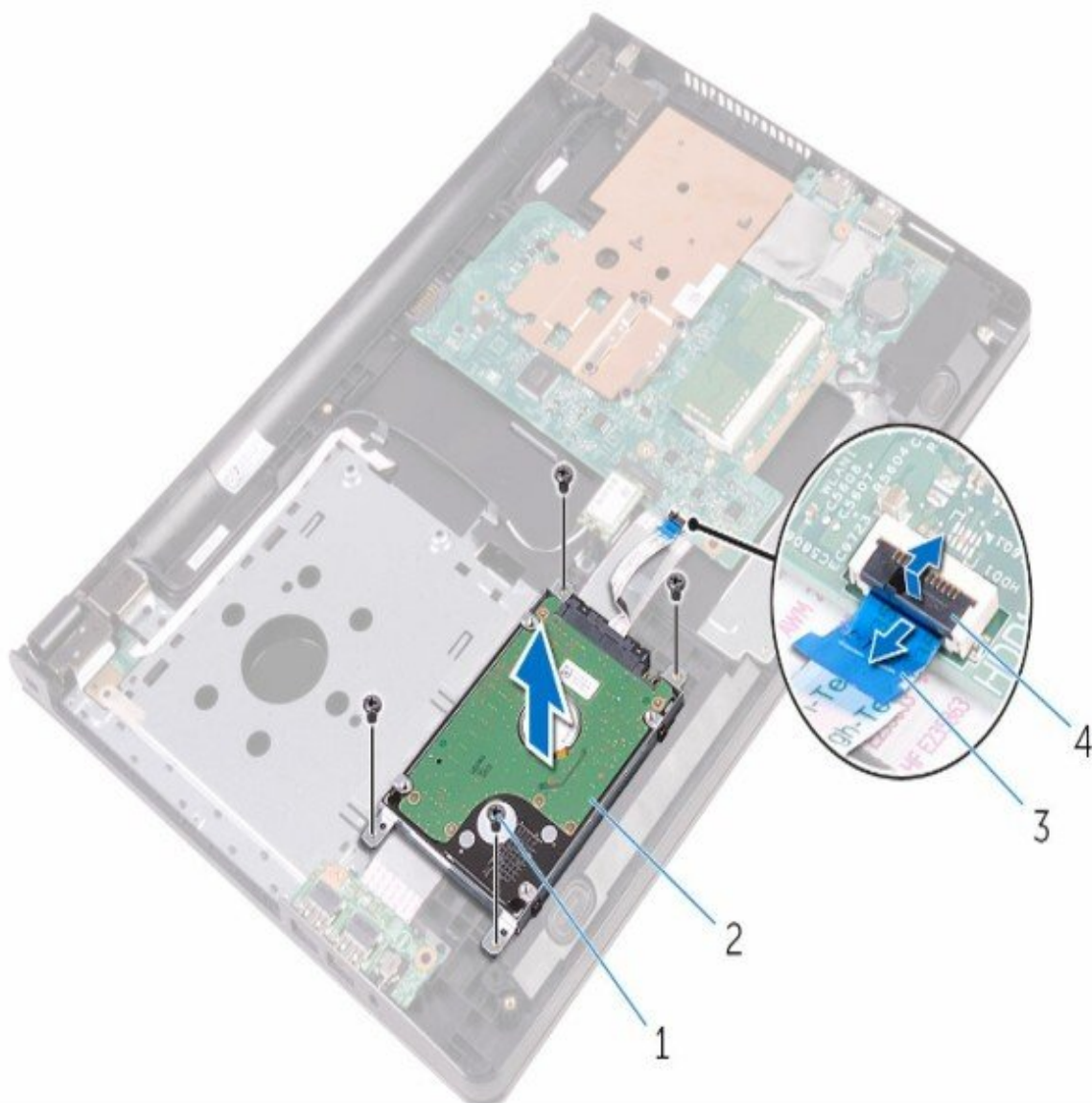




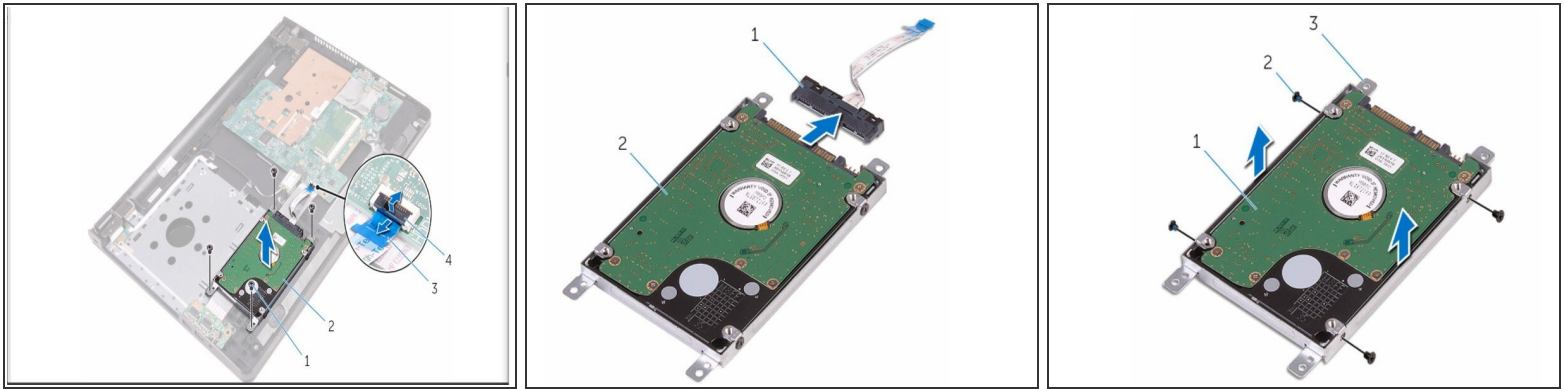
Dell Inspiron 3552 Hard Drive Replacement

part 2

Written By: Jordon Dozier



Step 1 — Removing hard drive



- Remove the screws that secure the hard-drive assembly to the palm-rest assembly
- Open the latch and disconnect the hard-drive cable from the system board
- Lift the hard-drive assembly off the palm-rest assembly
- Disconnect the interposer from the hard-drive assembly.
- Remove the screws that secure the hard-drive bracket to the hard drive and lift it off the hard drive.

Step 2 — Replacing hard drive FINLE



- Align the screw holes on the hard-drive bracket with the screw holes on the hard drive.
- Replace the screws that secure the hard-drive bracket to the hard drive
- Connect the interposer to the hard-drive assembly
- Align the screw holes on the hard-drive assembly with the screw holes on the palm-rest assembly
- Replace the screws that secure the hard-drive assembly to the palm-rest assembly.
- Slide the hard-drive cable into the system-board connector and close the latch to secure the cable.

To reassemble your device, follow these instructions in reverse order.