



# DualSense Motherboard Replacement

Follow this guide to replace the motherboard on...

Written By: Sam Omiotek



# INTRODUCTION

Follow this guide to replace the motherboard on a Sony PlayStation 5 DualSense controller. This will fix a drifting joystick or damaged charging port.

**This guide assumes that the joysticks are soldered onto the replacement motherboard.** Because the joysticks are calibrated during manufacturing, replacing them or transferring them to a new motherboard will result in uncalibrated joysticks that are likely to drift.

This guide requires desoldering and soldering the vibration motor wires.

**Note:** This guide is for DualSense controllers with an FCC ID ending in **1**. Check the back of your controller to verify your model. If yours ends in **A**, there will be differences in the internal design.

---

## TOOLS:

[1 x Opening Picks](#) (1)

[Spudger](#) (1)

[Phillips #00 Screwdriver](#) (1)

[Tweezers](#) (1)

[Soldering Workstation](#) (1)

---

## Step 1 — Unclip the right end of the middle trim



**⚠️ Disconnect and power down your controller before you begin.**

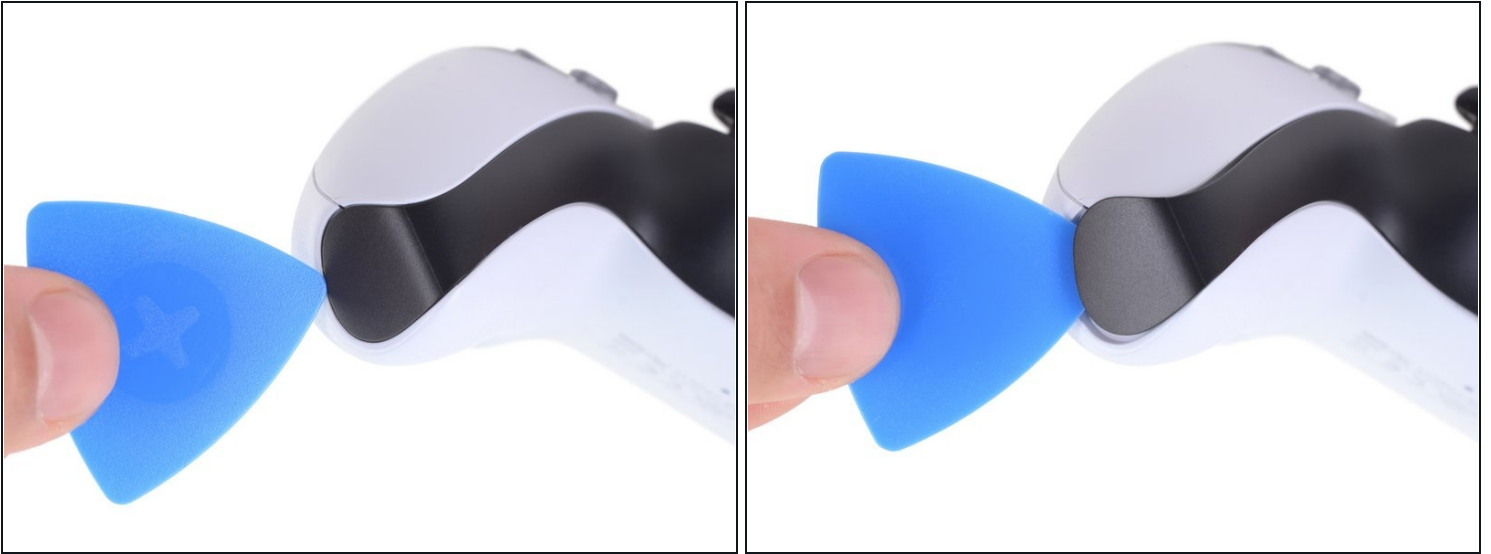
- Insert an opening pick underneath the middle trim at the bottom-right corner of the controller to release the clips securing it to the case.

## Step 2 — Unclip the lower-right edge of the middle trim



- Slide the opening pick along the lower-right edge of the middle trim to release the clips securing it to the case.

### Step 3 — Unclip the left end of the middle trim



- Insert an opening pick underneath the middle trim at the bottom-left corner of the controller to release the clips securing it to the case.

### Step 4 — Unclip the lower-left edge of the middle trim



- Slide the opening pick along the lower-left edge of the middle trim to release the clips securing it to the case.

## Step 5 — Remove the middle trim



- Use your fingers to lift up the bottom edge of the middle trim to release the remaining clips.
- Lift the middle trim over the joysticks to remove it.

## Step 6 — Remove the L1 button



- Insert the flat end of a spudger into the gap above the **L1** button.
  - ⓘ Cover the button with your [thumb](#) to prevent it from ejecting across the room.
- Pry upward to remove the **L1** button.



## Step 7 — Remove the R1 button



- Insert the flat end of a spudger into the gap above the **R1** button.
  - ① Cover the button with your [thumb](#) to prevent it from ejecting across the room.
- Pry upward to remove the **R1** button.

## Step 8 — Remove the rear case



- Use a Phillips screwdriver to remove the two 6.4 mm screws securing the bottom corners of the lower case.

## Step 9



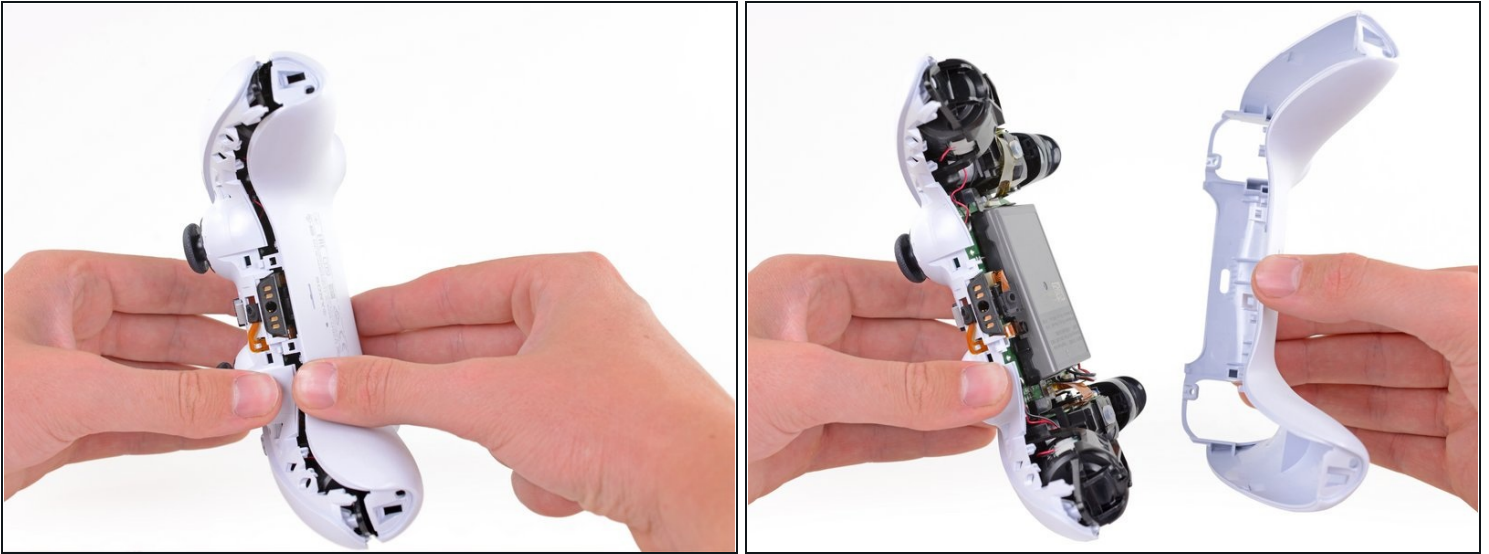
- Use a Phillips screwdriver to remove the two 6.4 mm screws behind the **L1** and **R1** buttons.

## Step 10



- Use the pointed edge of a spudger to unclip the two clips on either side of the headset jack.

## Step 11



- Remove the rear case.
- ① On some revisions, the rear case is held with two more clips next to the previously removed bumpers. If the rear case doesn't open without force, check for those clips.

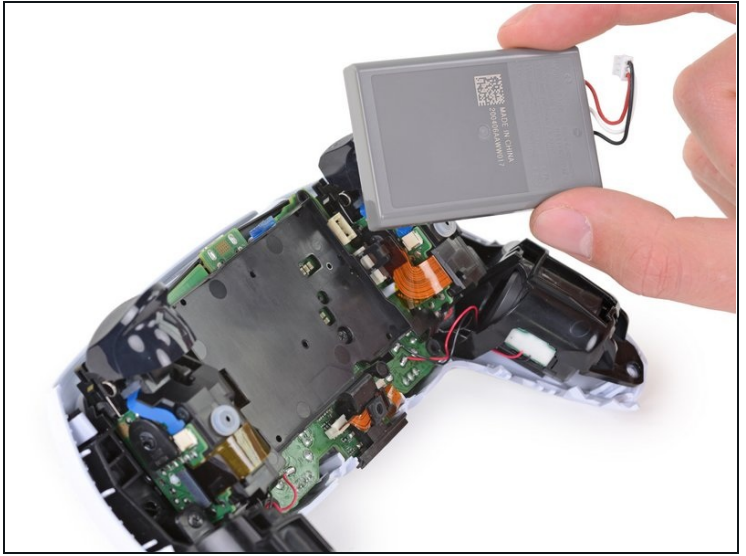
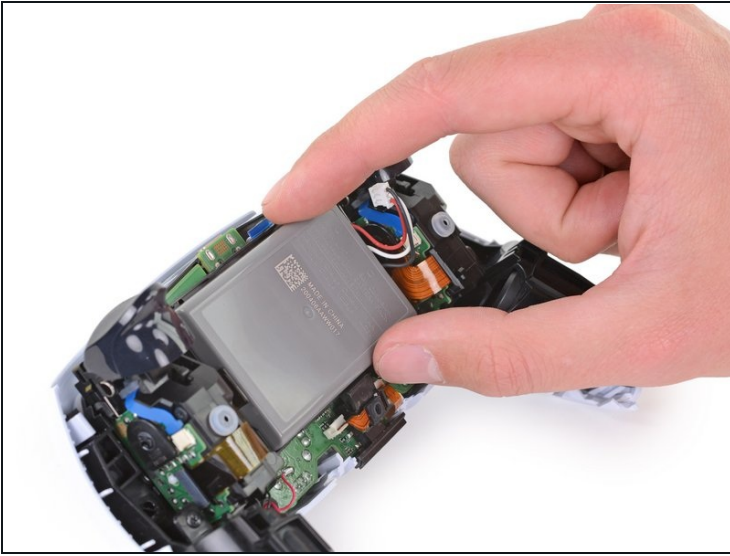
## Step 12 — Disconnect the battery



- Use a pair of tweezers or your fingers to disconnect the battery from the motherboard.  
⚠ Grip the connector, not the wires, when disconnecting.

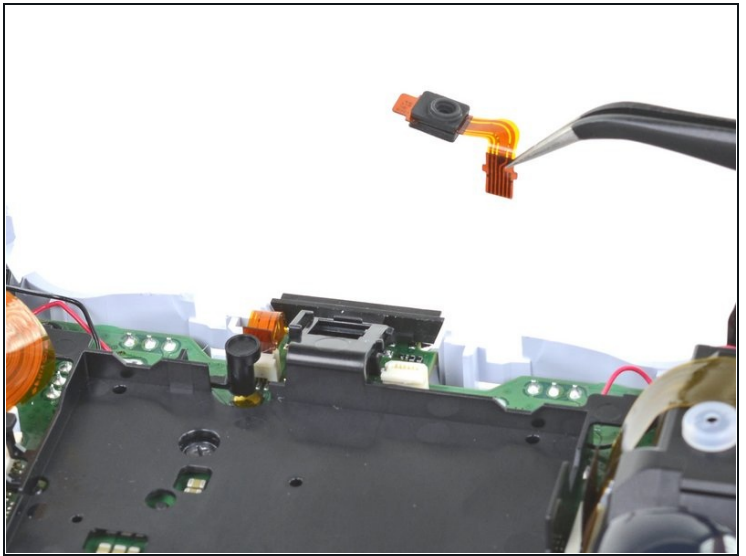
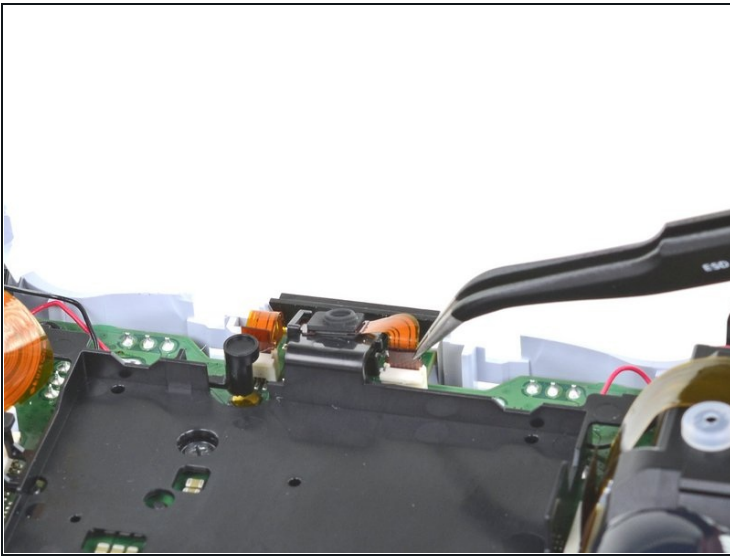


### Step 13 — Remove the battery



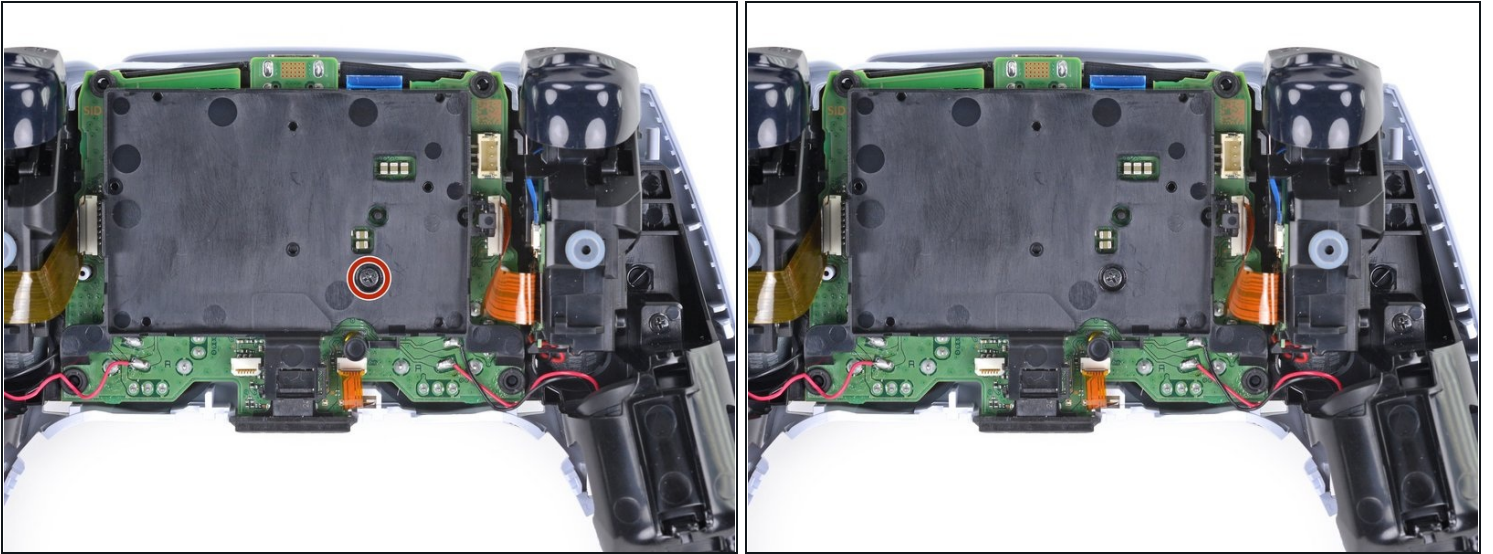
- Lift the battery straight out of the battery bracket.

### Step 14 — Remove the lower microphone



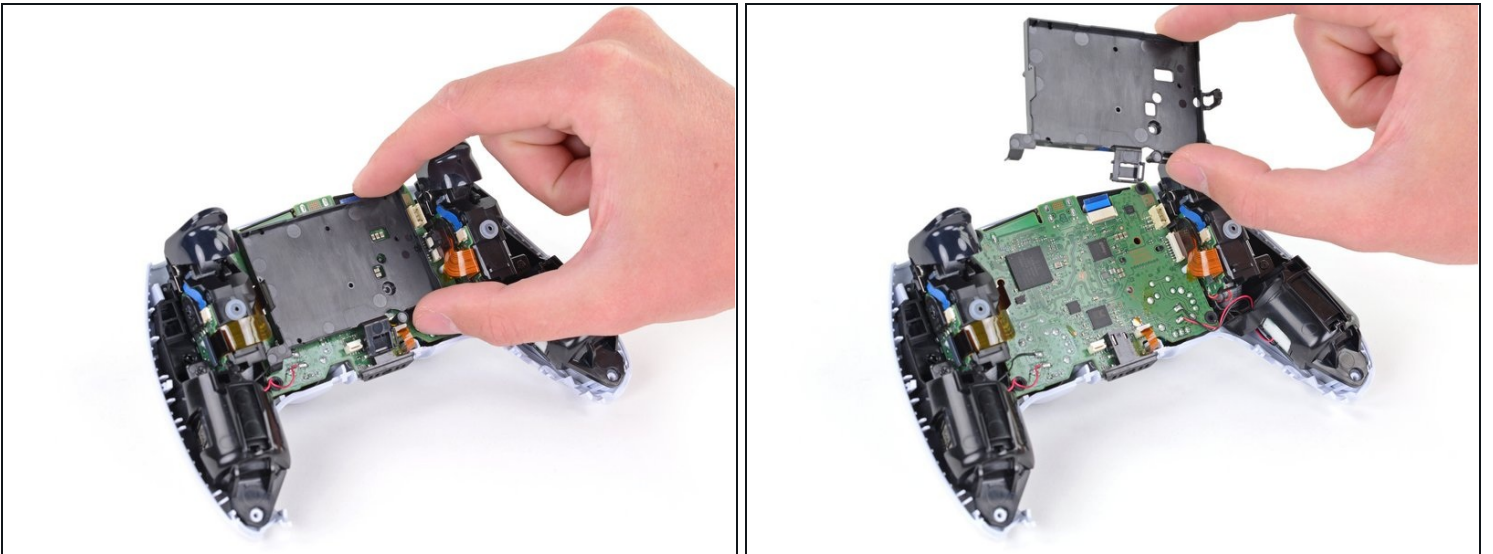
- Grab the lower microphone ribbon cable pull tab with your fingers or a pair of tweezers and disconnect it from the motherboard.

## Step 15 — Remove the battery bracket



- Use a Phillips screwdriver to remove the 6.4 mm screw securing the battery bracket.

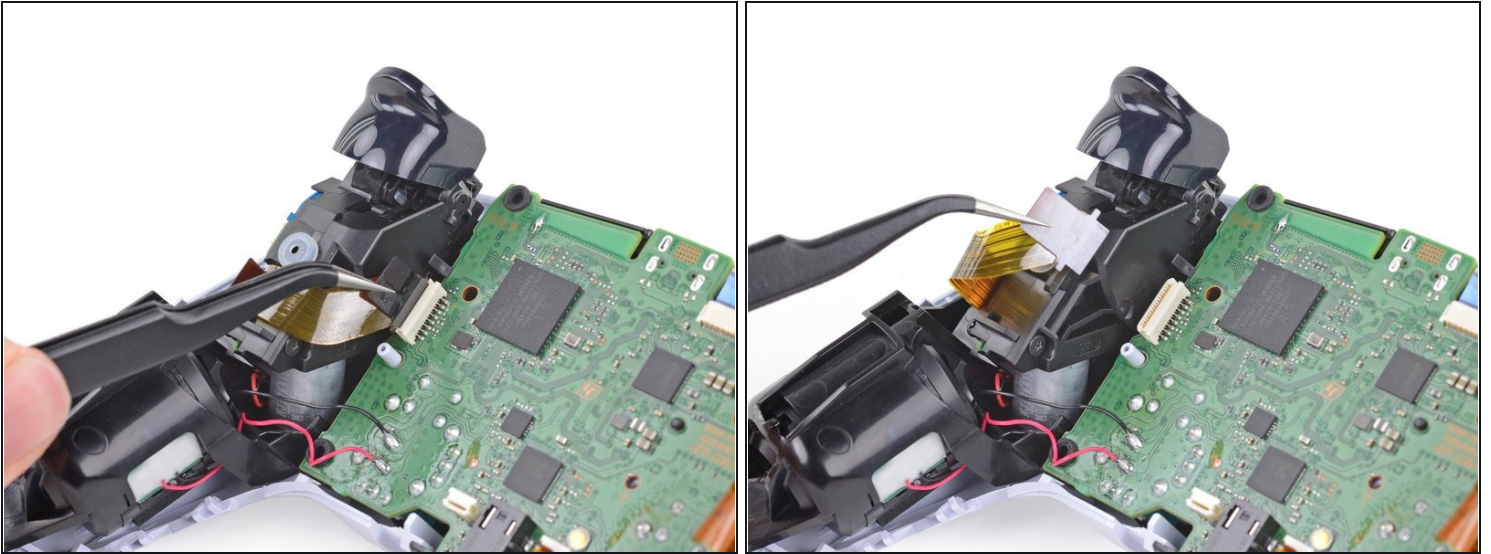
## Step 16



- Lift the battery bracket out of the motherboard.



## Step 17 — Disconnect the right trigger assembly



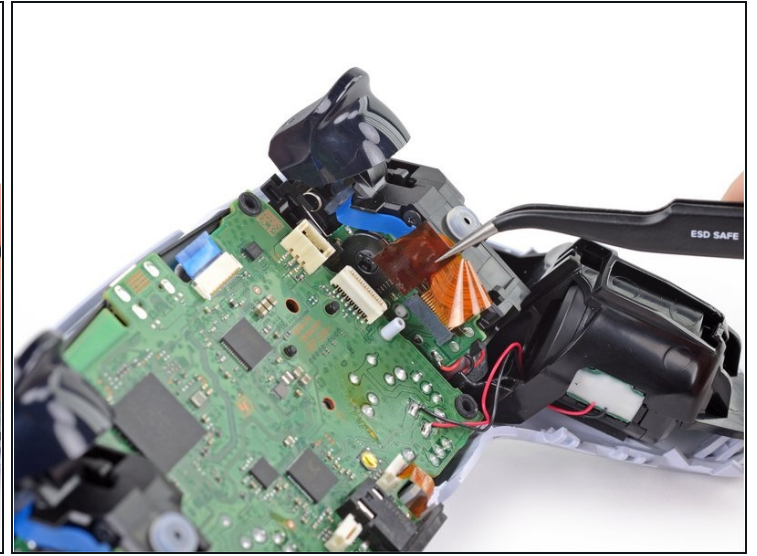
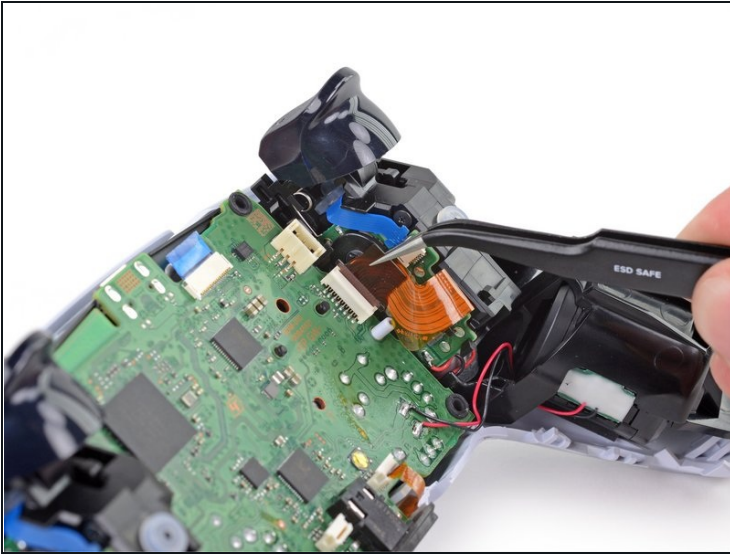
- Grip the right trigger assembly ribbon cable pull tab with a pair of tweezers or your fingers and pull up to disconnect it from the motherboard.
  - ⓘ Do not completely remove the ribbon cable yet.

## Step 18



- Grip the right trigger assembly ribbon cable pull tab with a pair of tweezers or your fingers, and pull up to disconnect it from the trigger assembly.
- Remove the ribbon cable.

## Step 19 — Disconnect the left trigger assembly



- Grip the left trigger assembly ribbon cable pull tab with a pair of tweezers or your fingers and pull up to disconnect it from the motherboard.
  - ⓘ Do not completely remove the ribbon cable yet.

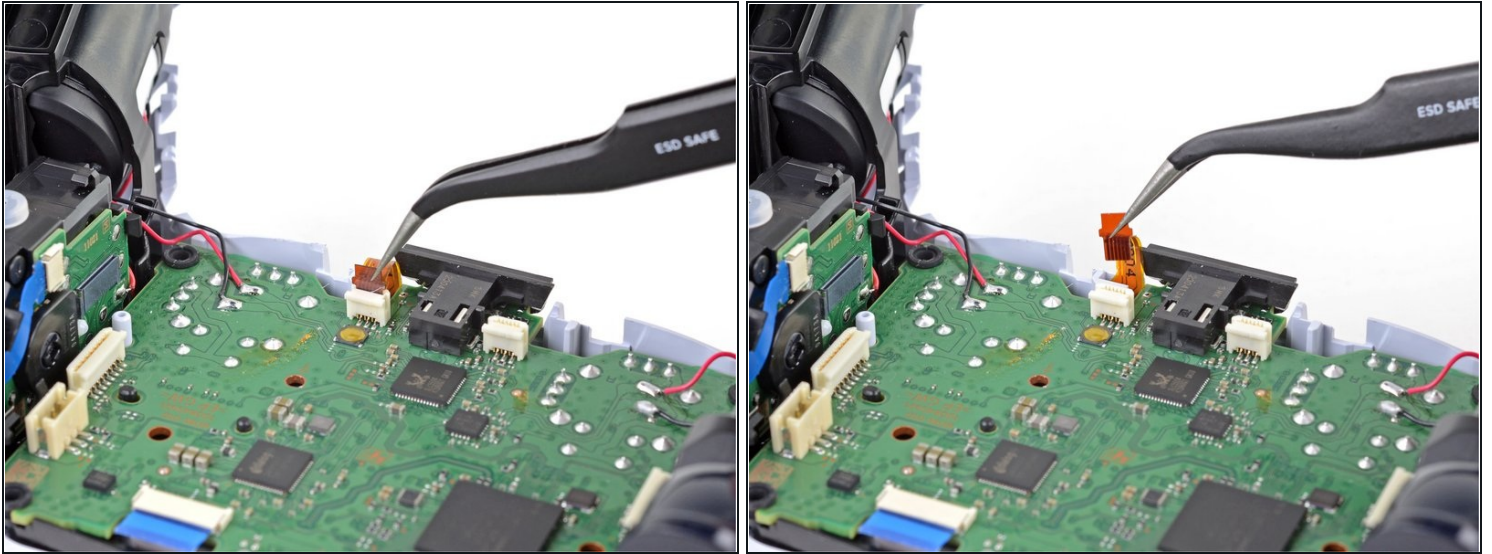
## Step 20



- Grip the left trigger assembly ribbon cable pull tab with a pair of tweezers or your fingers, and pull up to disconnect it from the trigger assembly.
- Remove the ribbon cable.

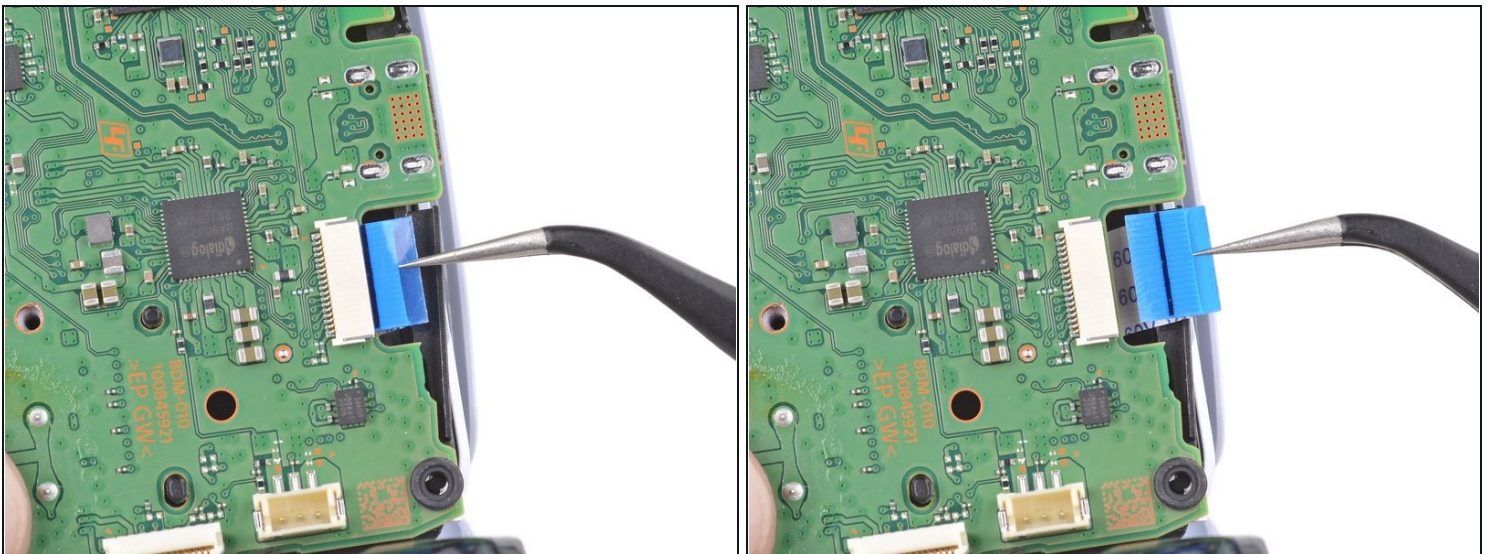


## Step 21 — Disconnect the upper microphone



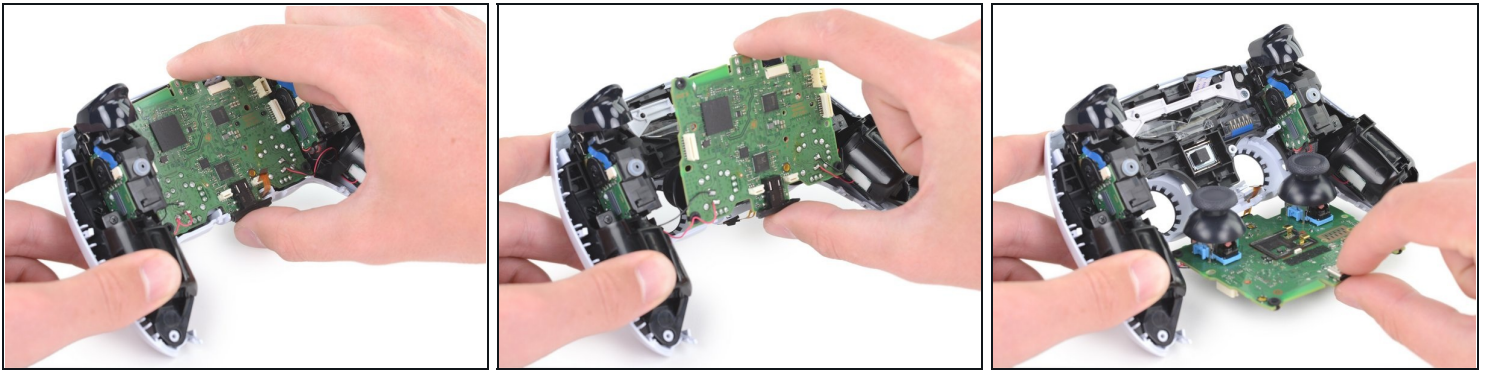
- Use a pair of tweezers or your fingers to grip the upper microphone ribbon cable pull tab, and pull up to disconnect it from the motherboard.

## Step 22 — Disconnect the touchpad



- Use a pair of tweezers or your fingers to grip the touchpad ribbon cable pull tab, and pull it straight out of the motherboard connector.

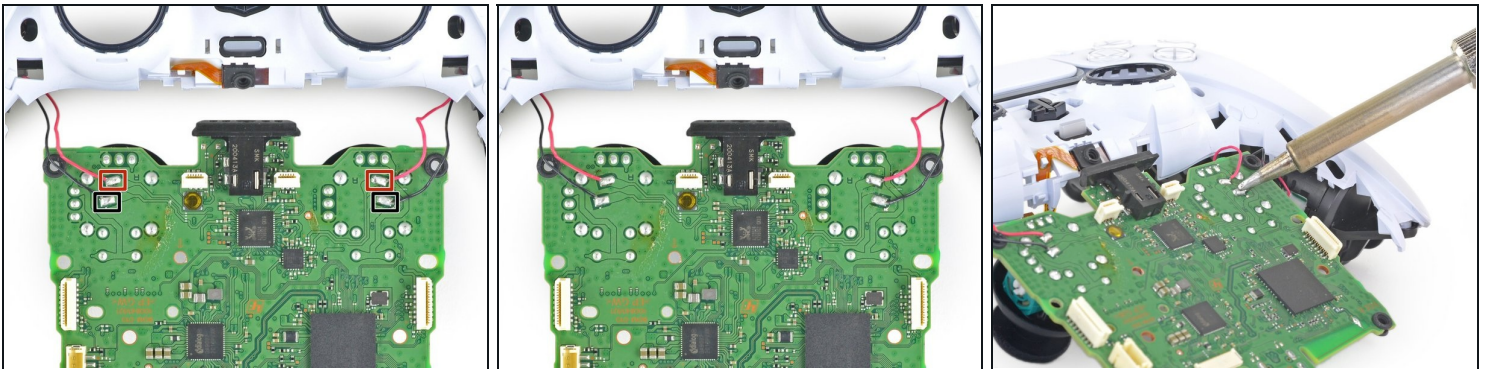
## Step 23 — Lift out the motherboard



- Carefully guide the joysticks through the front case and lift the motherboard out.

**⚠ Do not completely remove the motherboard.** There are four soldered wires tethering the motherboard to the vibrator motors.

## Step 24 — Desolder the vibration motors



- Flip over the controller and motherboard.
- Use a soldering iron to desolder the vibration motor wires from the motherboard:
  - Two red wires
  - Two black wires
- ☑ During reassembly, remember to solder the wires back into the same position. The red wires belong closest to the edge and next to the **Rs** on the motherboard.

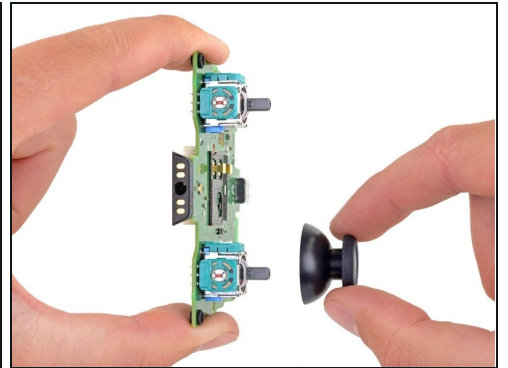
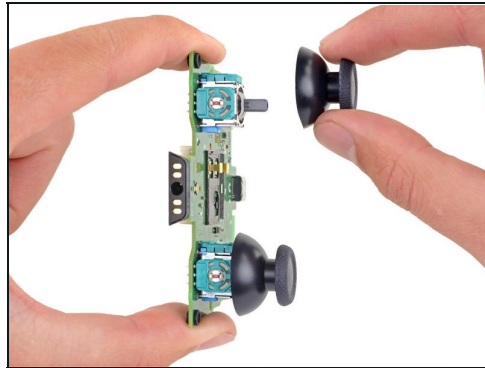
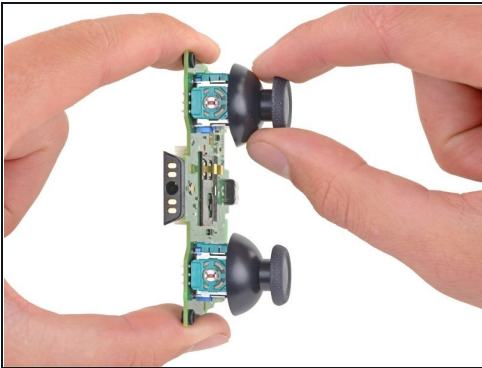


## Step 25



- Separate the controller from the motherboard.

## Step 26 — Remove the joystick covers



- Pull the joystick covers straight off the joystick assemblies.
- Only the motherboard remains.

**To reassemble your device, follow the above steps in reverse order.**

Take your e-waste to an [R2 or e-Stewards certified recycler](#).

Repair didn't go as planned? Try some [basic troubleshooting](#), or ask our [Answers community](#) for help.