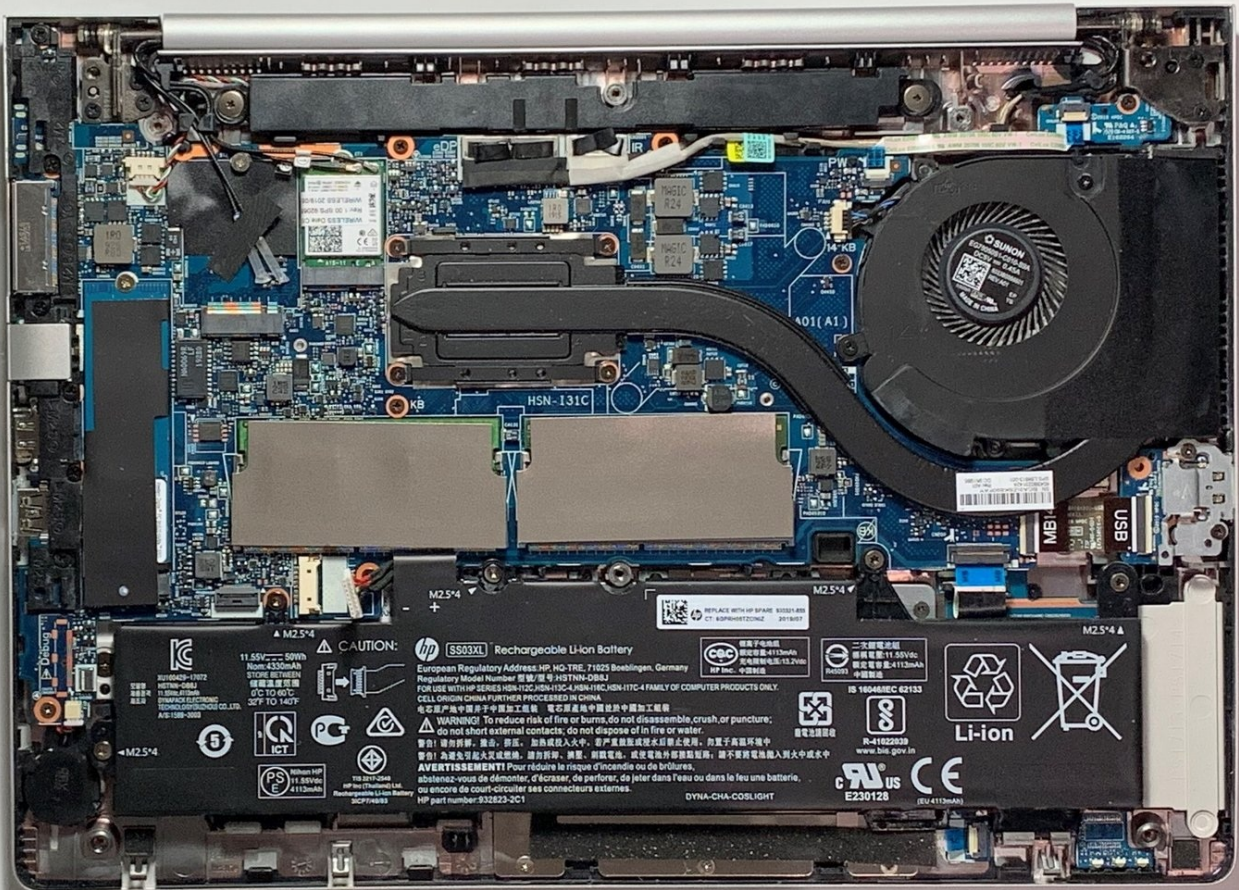




# HP EliteBook 745 G6 RAM Replacement

Adding more memory is the best thing you can do...

Written By: Mengqi Shi



# INTRODUCTION

Adding more memory is the best thing you can do for your PC. The larger memory can provide an instant upgrade for the system. By following this repair guide, you could add or upgrade the memory in HP EliteBook 745 G6 Notebook by yourself.

You need to pay attention to remove power, disconnect batteries, and use an anti-static wrist strap during the repair process. This is a video for how to use an [anti-static wrist strap](#).

The device & model of this repair guide is HP EliteBook 745 G6 Notebook. For more information on this device, refer to the [maintenance and service manual](#).

---

## TOOLS:

Plastic Cards (1)

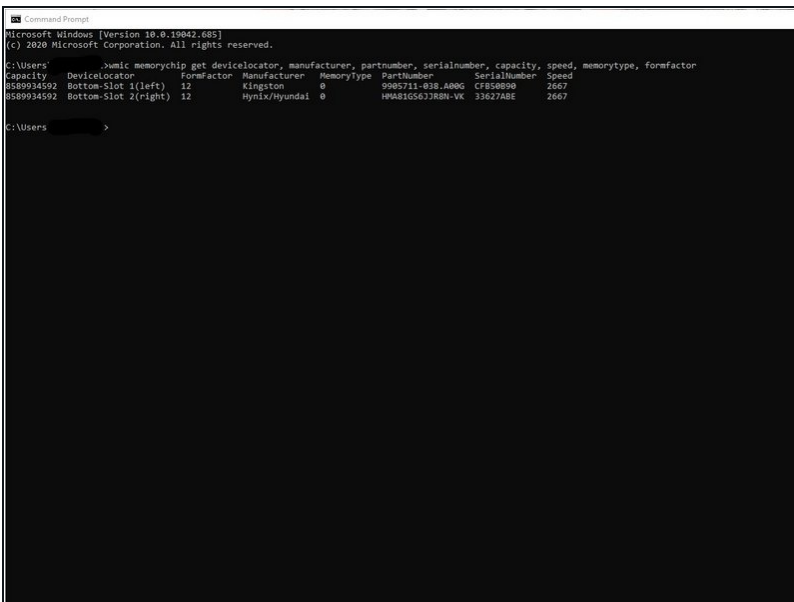
Anti-Static Wrist Strap (1)

Spudger (1)

Phillips #00 Screwdriver (1)

---

## Step 1 — RAM



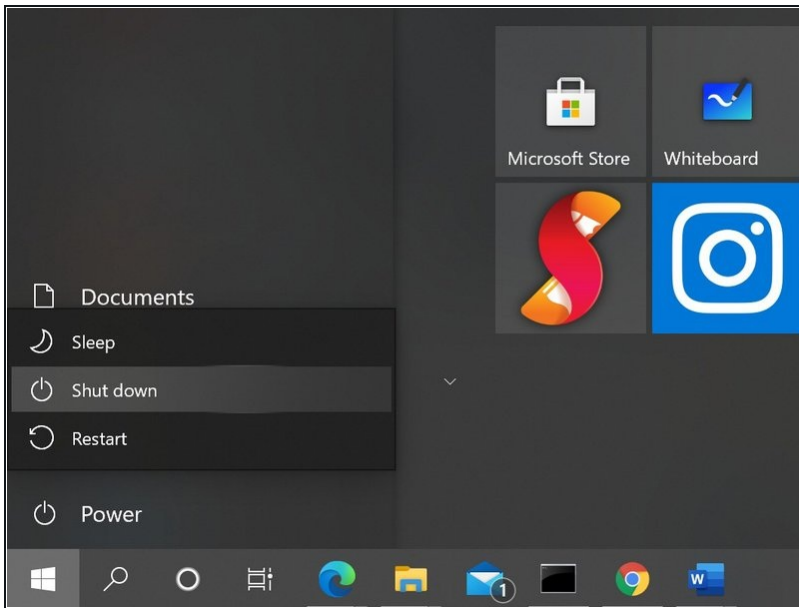
```
Microsoft Windows [Version 10.0.19042.688]
(c) 2020 Microsoft Corporation. All rights reserved.

C:\Users>wmic memorychip get devicelocator, manufacturer, partnumber, serialnumber, capacity, speed, memorytype, formfactor
Capacity DeviceLocator FormFactor Manufacturer MemoryType PartNumber SerialNumber Speed
8589934592 Bottom-Slot 1(left) 12 Kingston 0 S86711-835_A00G C7A00090 2667
8589934592 Bottom-Slot 2(right) 12 Hynix/hyundai 0 HMA81G56J7RBN-VK 33627ABE 2667

C:\Users>
```

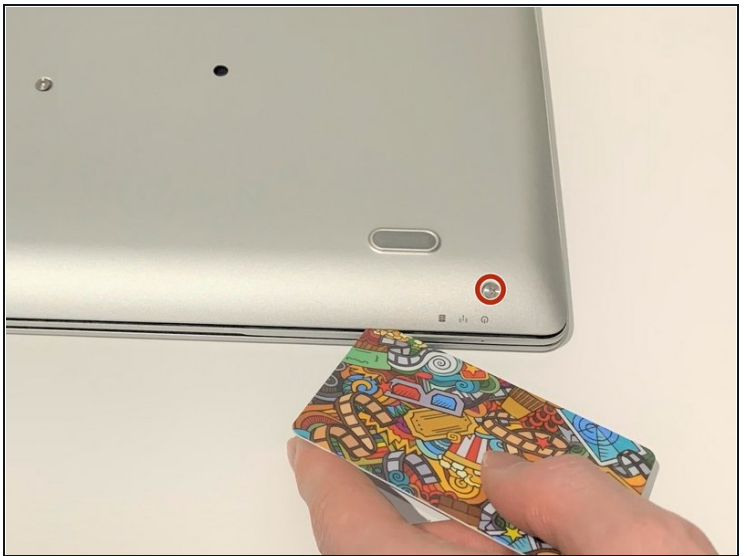
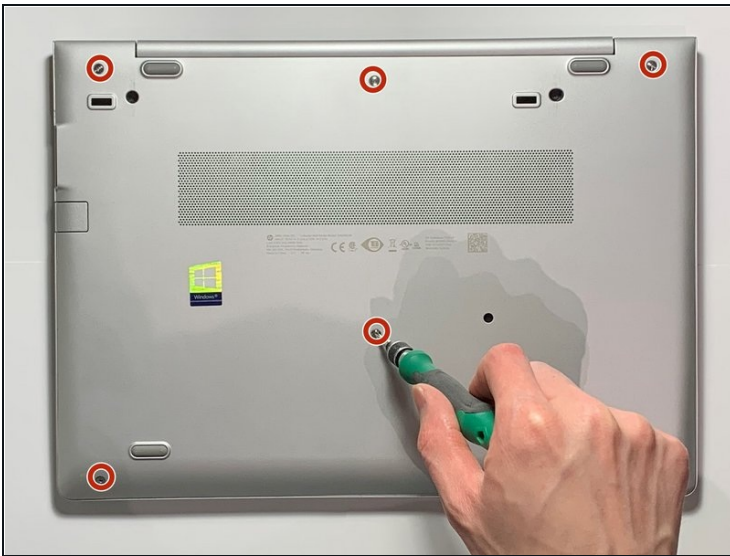
- Type CMD in the Start Menu and open Command Prompt.
- Type the following command to view memory details and press Enter.
  - ① wmic memorychip get devicelocator, manufacturer, partnumber, serialnumber, capacity, speed, memorytype, formfactor.

## Step 2



- Power off the Notebook.
- Select the **Start** button.
- Select the **Power** button.
- Select **Shut down**.
- Disconnect the power adapter.

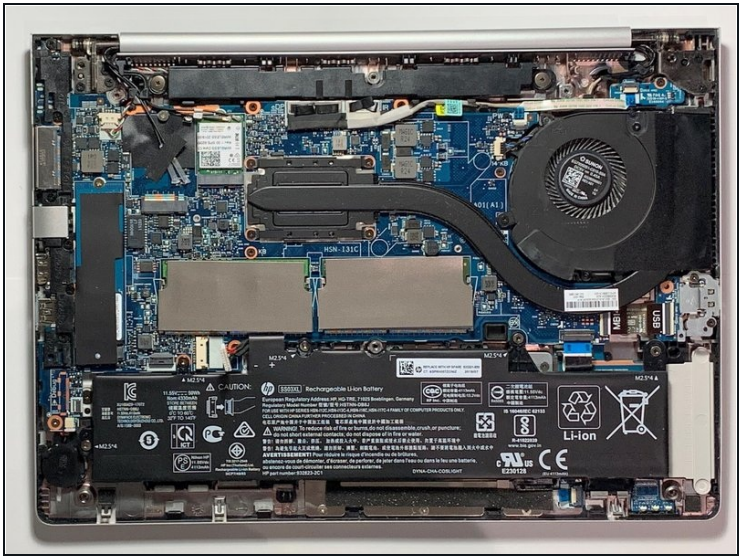
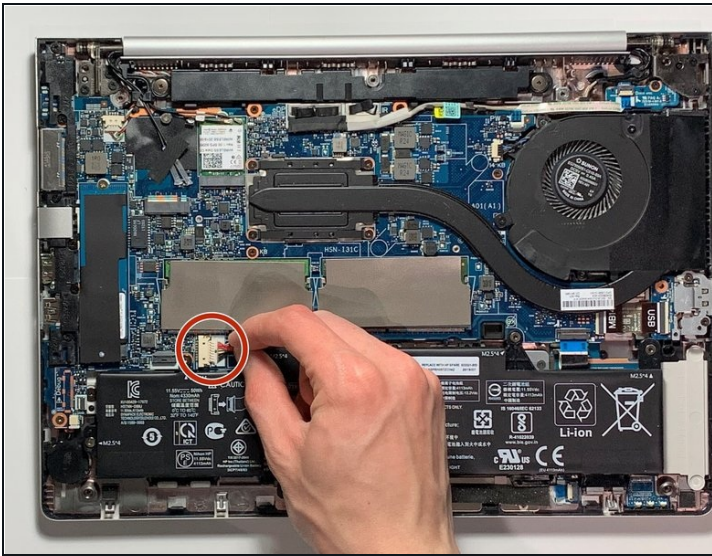
## Step 3



- Turn the notebook upside down on a flat surface.
- Loosen the six captive screws and the two inset captive screws counter-clockwise with the Phillips #00 screwdriver.
- Pry the bottom cover with [plastic card](#) or spudger at the bottom right corner.
- Lift the bottom cover off with plastic card.



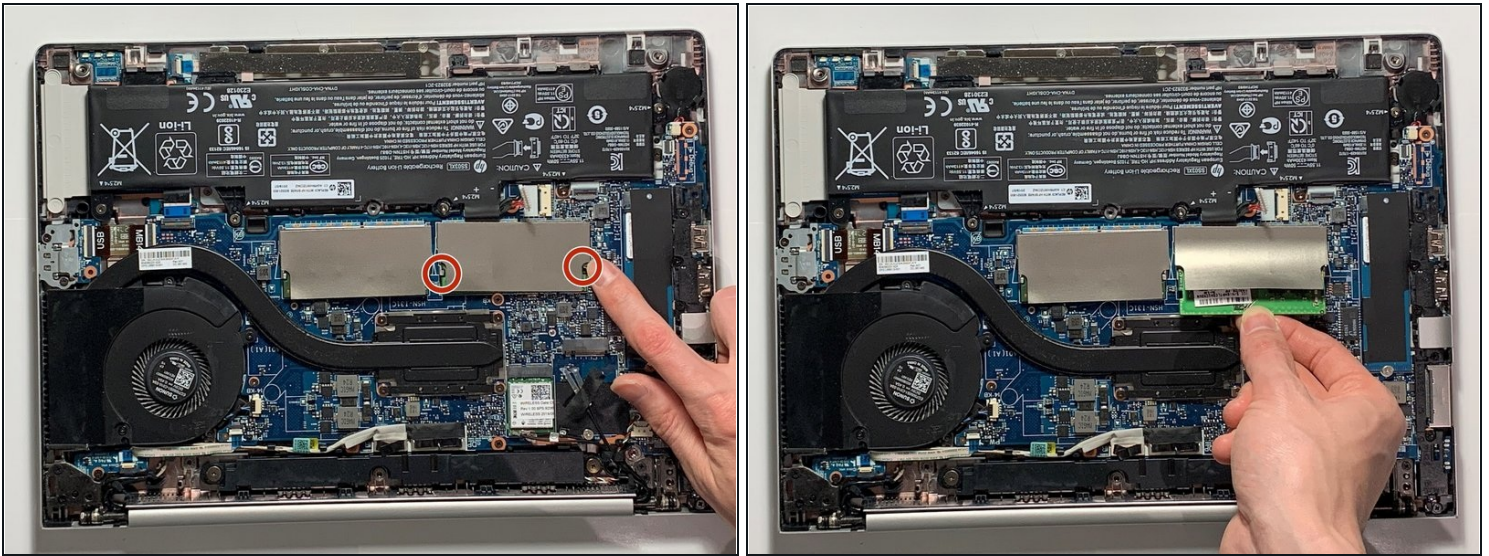
## Step 4



⚠ Be sure to ground yourself by wearing [anti-static wrist strap](#).

- Pull the battery cable from the system board.

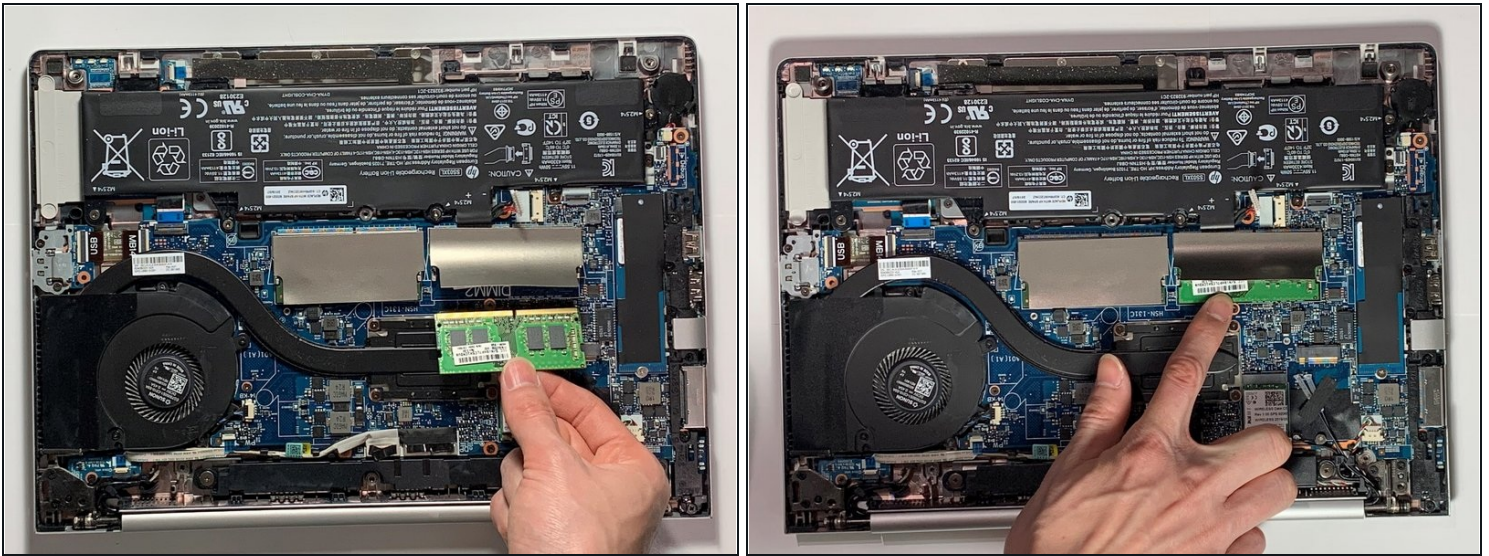
## Step 5



- ⚠ Be sure to ground yourself by wearing anti-static wrist strap.
- ⚠ Do not remove memory shielding from the system board when replacing memory.
- ❗ The socket labeled 2 houses the expansion memory module and the socket labeled 1 houses the primary memory module.
- Spread the retaining tabs on each side of the memory module slot to release the memory module.
- Pull the memory module away from the slot at an angle.



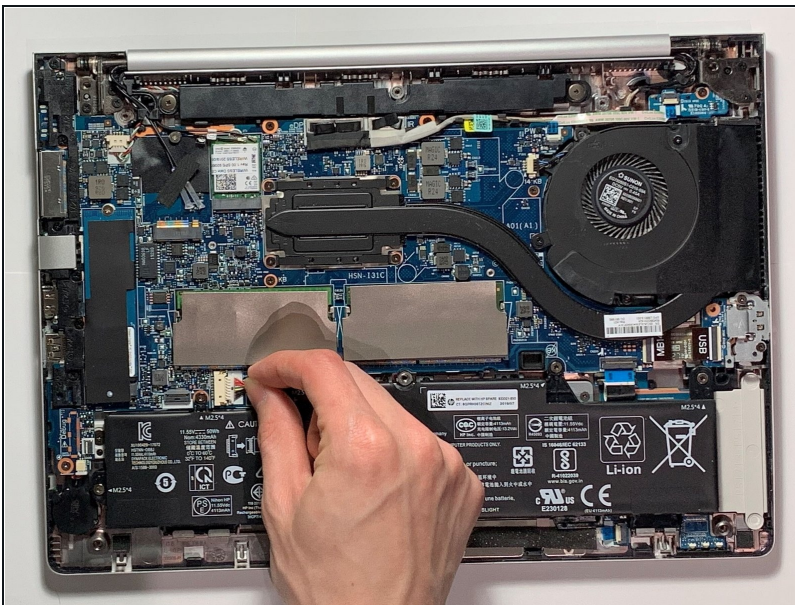
## Step 6



⚠ Be sure to ground yourself by wearing anti-static wrist strap.

- Insert the memory module into the slot at an angle.
- Push down the center of memory module until the retaining tabs lock the RAM stick.

## Step 7



⚠ Be sure to ground yourself by wearing anti-static wrist strap.

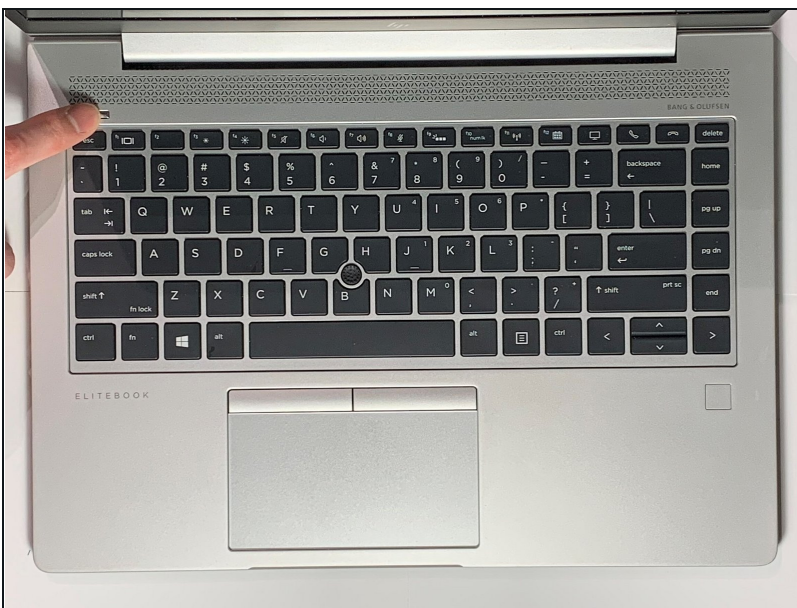
- Insert the battery cable into the system board.

## Step 8



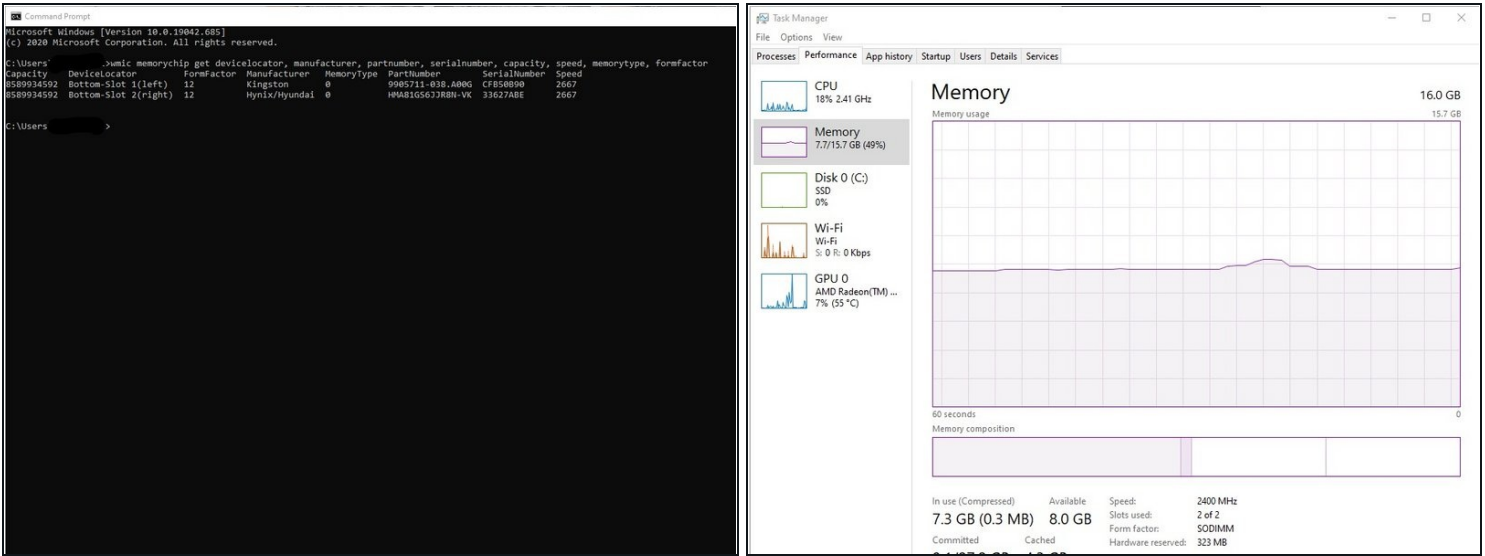
- Push down the bottom cover at the four corner and center.
- Tighten the six captive screws and the two inset captive screws clockwise with Phillips #00 screwdriver.

## Step 9



- Push the power button.

## Step 10



- Type CMD in the Start Menu and open Command Prompt.
- Type the following command to view memory details and press Enter.
  - wmic memorychip get devicelocator, manufacturer, partnumber, serialnumber, capacity, speed, memorytype, formfactor
- Right-click on the taskbar.
- Select the “Task Manager”.
- Select the "Performance".

To reassemble your device, follow these instructions in reverse order.