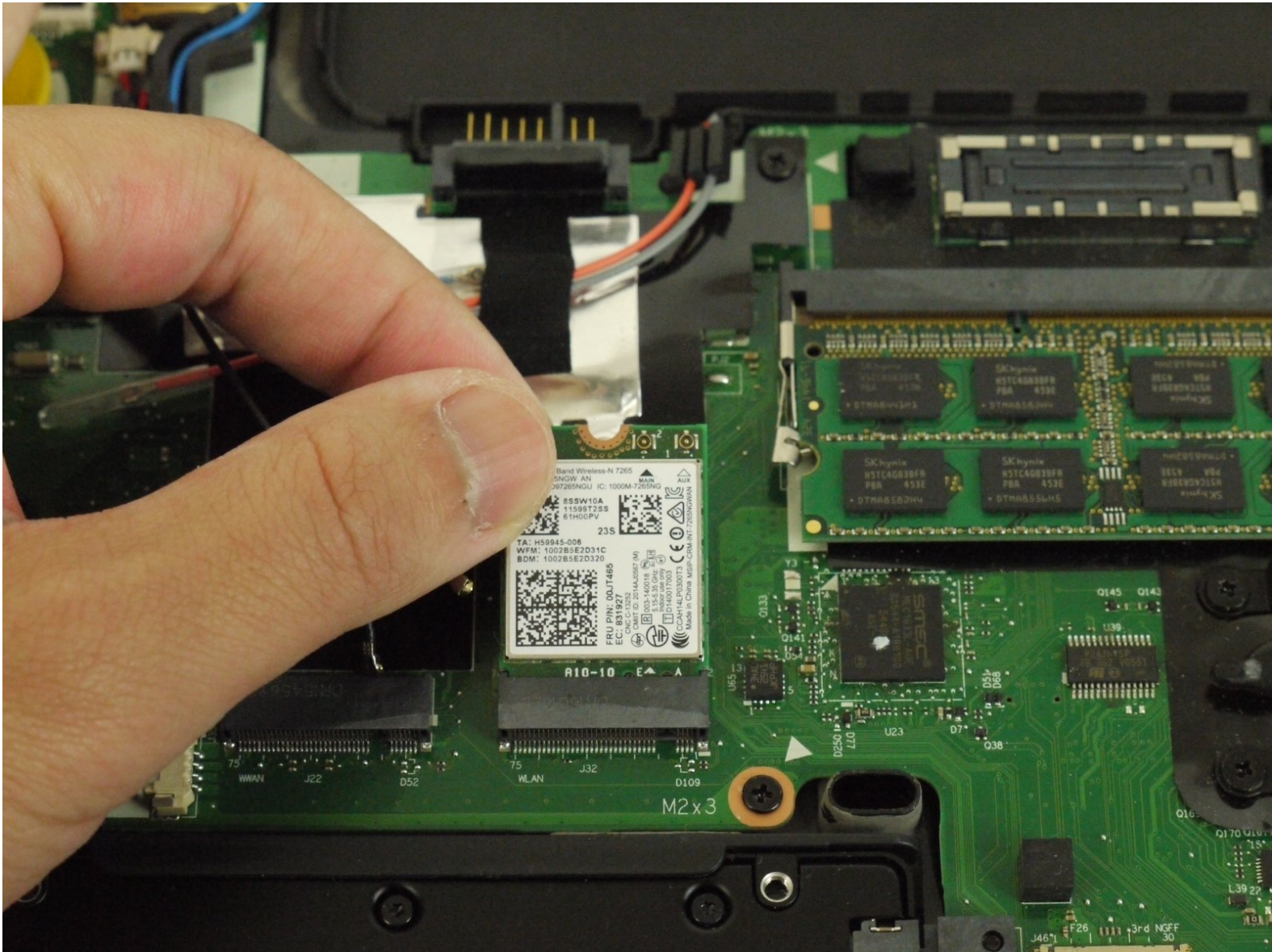




Lenovo Thinkpad T450 Wi-Fi Card (WLAN) Replacement

This guide will show you how to remove and replace the Wi-Fi card (WLAN) in the Lenovo ThinkPad T450 laptop.

Written By: Justin Ogihara



This document was generated on 2021-08-31 08:14:41 AM (MST).

INTRODUCTION

The wireless local area network (WLAN) card, or Wi-Fi card, is an essential component for laptops to establish and maintain wireless connectivity for internet access. The following symptoms can be signs of a failing or faulty Wi-Fi card:

- Can't connect to the internet
- Connected to the router but no internet
- My Wi-Fi address won't show up
- Wi-Fi connection keeps dropping

If your Lenovo ThinkPad T450 is experiencing any of the above symptoms, it may be time to replace the Wi-Fi card in your laptop. When you remove the back cover of the laptop to expose the inner components, the Wi-Fi card is typically fastened onto the motherboard by a single screw. Follow these simple instructions to replace the Wi-Fi card in your device.



TOOLS:

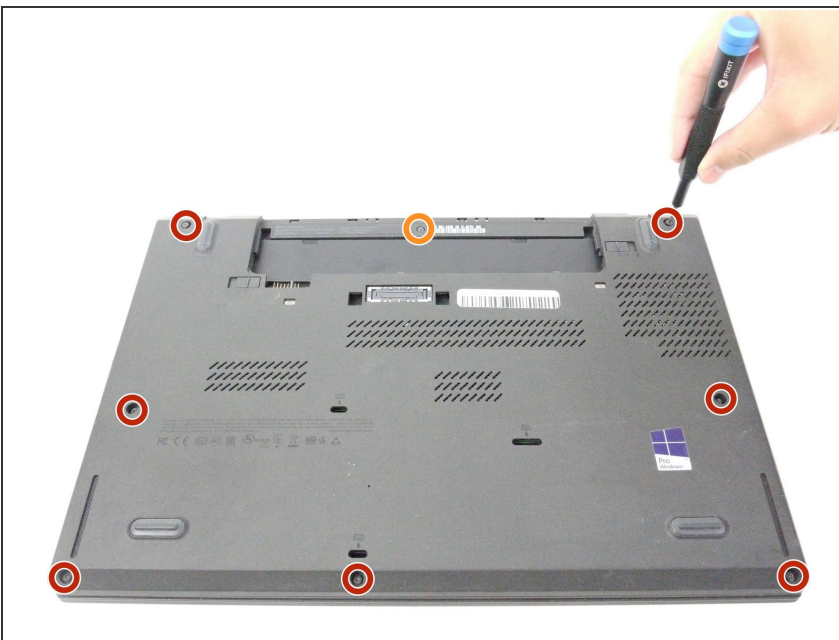
- [JIS #00 Screwdriver](#) (1)
 - [iFixit Opening Tool](#) (1)
-

Step 1 — External Battery



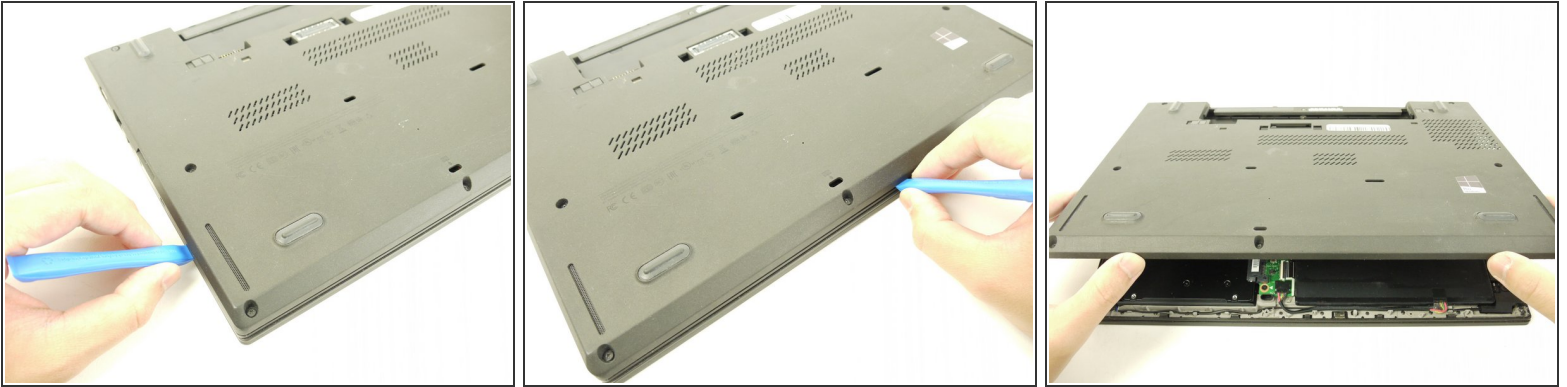
- Using your hands, slide the two locking tabs away from each other to release the battery.
- Slide the battery up and out of the device.

Step 2 — Back Cover



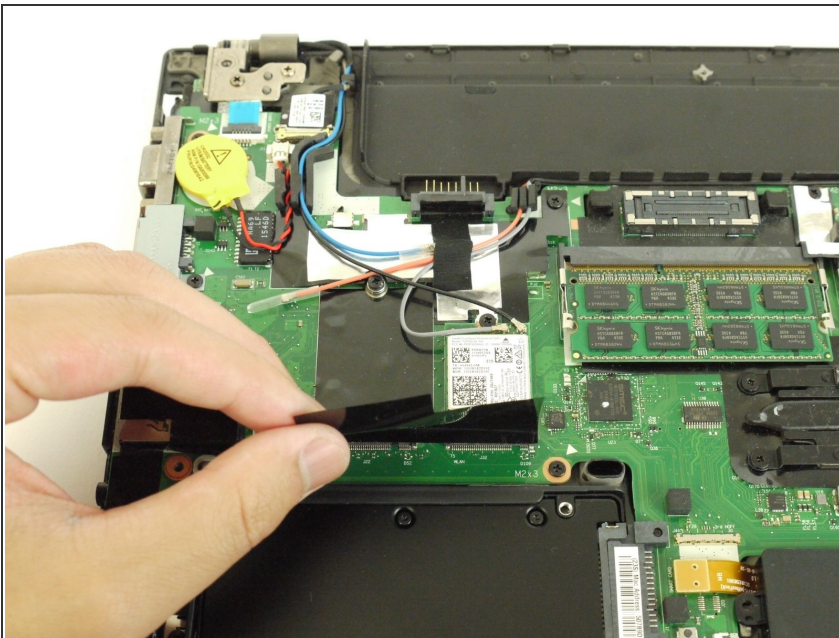
- Using the JIS #00 screwdriver, unscrew seven screws from the back cover.
 - ⓘ These screws are not removable and will remain in the back cover.
- Use the JIS #00 screwdriver to remove the single 2.8 mm screw from the back cover.

Step 3



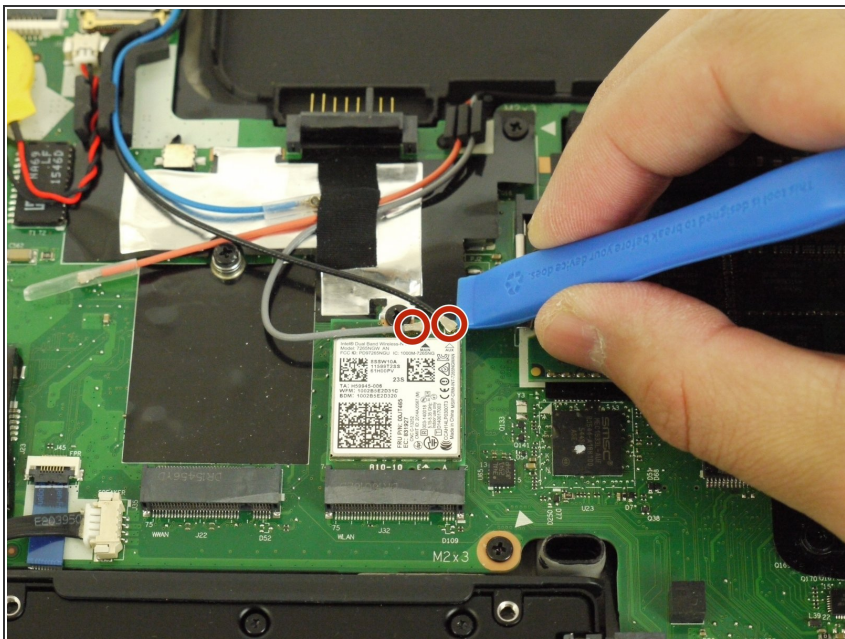
- Insert a plastic opening tool into the edges of the laptop and work your way around the edges to pry off the back cover from the device.
- Remove the back cover from the device.

Step 4 — Wi-Fi Card (WLAN)



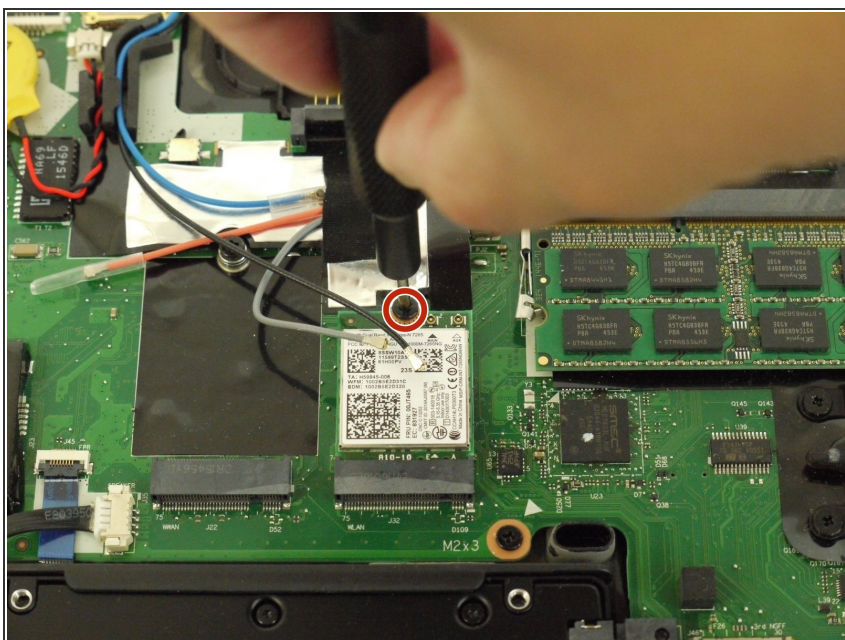
- Lift and remove the black piece of plastic to expose the Wi-Fi card.

Step 5



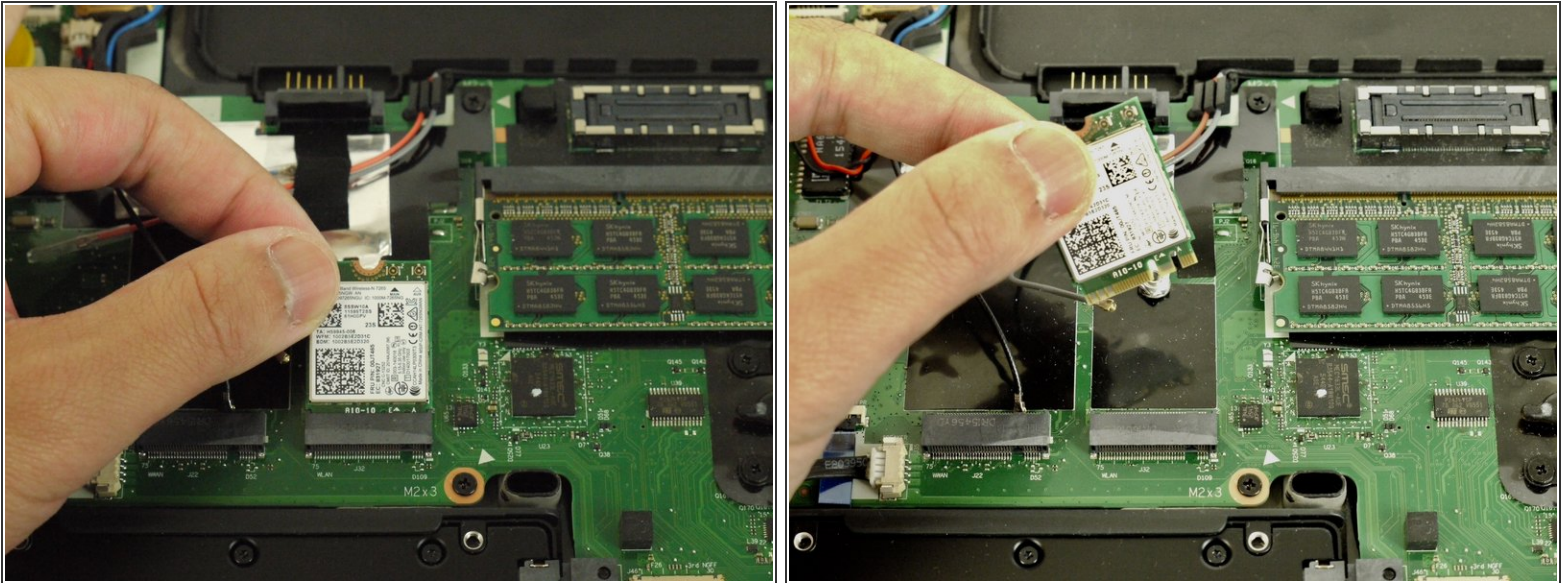
- Using the plastic opening tool, disconnect the two cables from the Wi-Fi card.

Step 6



- Using the JIS #00 screwdriver, remove the single 2.8 mm screw.
- ❗ After removing the screw, the Wi-Fi card should pop up on its own.

Step 7



- Lift the Wi-Fi card out of the slot and remove it from the device.

To reassemble your device, follow these instructions in reverse order.

Take your e-waste to an [R2 or e-Stewards certified recycler](#).